

AN-1755 LM5035A Evaluation Board

1 Introduction

The LM5035A evaluation board is designed to provide the design engineer with a fully functional power converter based on the Half Bridge topology to evaluate the LM5035A controller. The evaluation board is provided in an industry standard quarter-brick footprint.

The performance of the evaluation board is as follows:

- Input operating range: 36V to 75V
- Output voltage: 3.3V
- Output current: 0 to 30A
- Measured efficiency: 89% at 30A, 92% at 15A
- Frequency of operation: 400kHz
- Board size: 2.28 x 1.45 x 0.5 inches
- Load Regulation: 0.2%
- Line Regulation: 0.1%
- Line UVLO (33.9V/31.9V on/off)
- Line OVP (79.4V/78.3V off/on)
- Hiccup current limit

The printed circuit board consists of six layers; 2 ounce copper outer layers and 3 ounce copper inner layers on FR4 material with a total thickness of 0.062 inches. The unit is designed for continuous operation at rated load at <40°C and a minimum airflow of 200 CFM.

2 Theory of Operation

Power converters based on the Half Bridge topology offer high efficiency and good power handling capability in applications up to 500 Watts. The operation of the transformer causes the flux to swing in both directions, thereby better utilizing the magnetic core.

The Half Bridge converter is derived from the Buck topology family, employing separate high voltage (HO) and low voltage (LO) modulating power switches with independent pulse width timing. The main difference between the topologies are, the Half Bridge topology employs a transformer to provide input / output ground isolation and a step down or step up function.

Each cycle, the main primary switch turns on and applies one-half the input voltage across the primary winding, which has eight turns. The transformer secondary has two turns, leading to a 4:1 step-down of the input voltage. For an output voltage of 3.3V the composite duty cycle (D) of the primary switches varies from approximately 75% (low line) to 35% (high line).

The secondary employs synchronous rectification controlled by the LM5035A. During soft-start, the sync FET body diodes act as the secondary rectifiers until the main transformer energizes the gate drivers. The DLY resistor programs the non-overlap timing for the sync FETs to maximize efficiency while eliminating shoot through current.

Feedback from the output is processed by an amplifier and reference, generating an error voltage, which is coupled back to the primary side control through an optocoupler. The COMP input to the LM5035A greatly increases the achievable loop bandwidth. The capacitance effect (and associated pole) of the optocoupler is reduced by holding the voltage across the optocoupler constant. The LM5035A voltage mode controller pulse width modulates the error signal with a ramp signal derived from the line voltage (feed forwarding) to reduce the response time to input voltage changes. A standard “type III” network is used for the compensator.

The evaluation board can be synchronized to an external clock with a recommended frequency range of 420KHz to 500KHz.

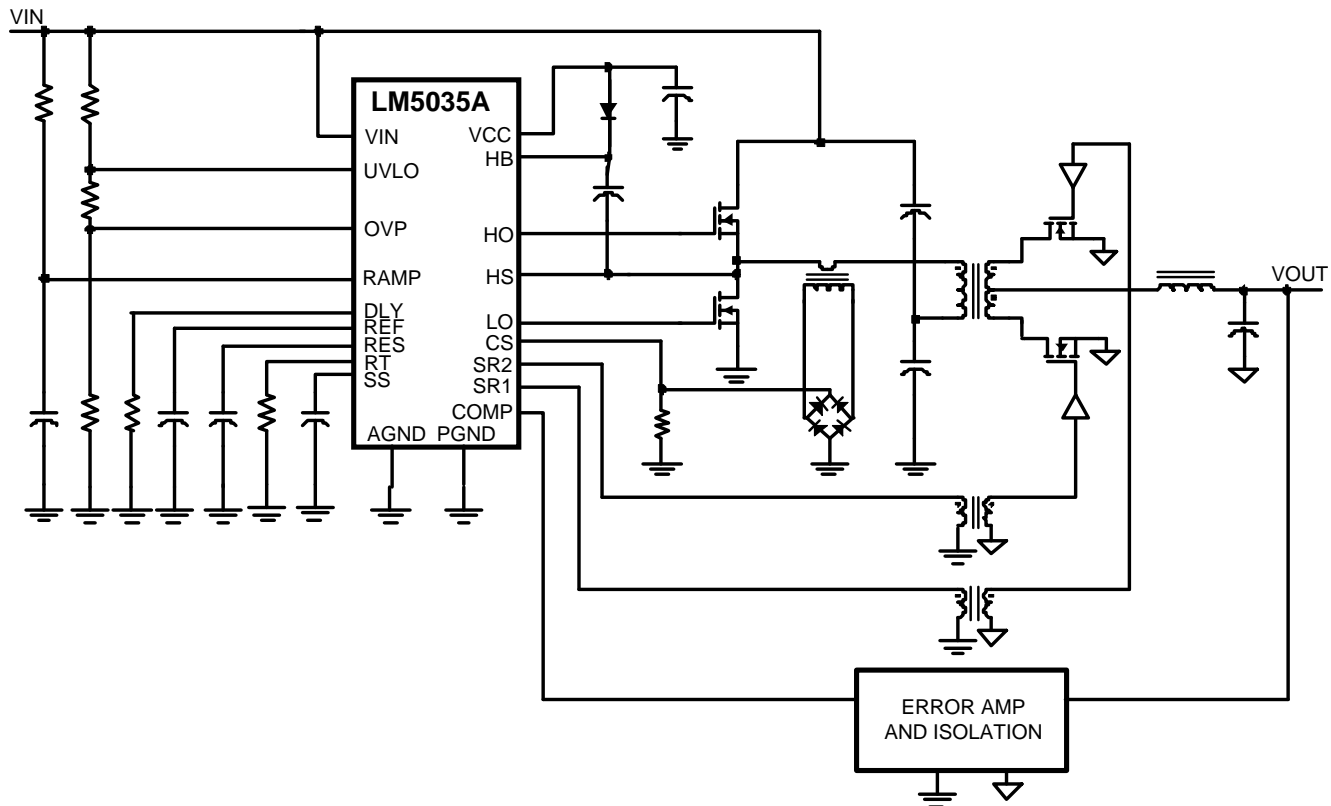


Figure 1. Simplified Half Bridge Converter

3 Powering and Loading Considerations

When applying power to the LM5035A evaluation board, certain precautions need to be followed. A misconnection can damage the assembly.

4 Proper Connections

When operated at low input voltages the evaluation board can draw up to 3.5A of current at full load. The maximum rated output current is 30A. Be sure to choose the correct connector and wire size when attaching the source supply and the load. Monitor the current into and out of the evaluation board. Monitor the voltage directly at the output terminals of the evaluation board. The voltage drop across the load connecting wires will cause inaccurate measurements. This is especially true for accurate efficiency measurements.

5 Source Power

The evaluation board can be viewed as a constant power load. At low input line voltage (36V) the input current can reach 3.5A, while at high input line voltage (75V) the input current will be approximately 1.5A. Therefore, to fully test the LM5035A evaluation board a DC power supply capable of at least 85V and 5A is required.

The power supply must have adjustments for both voltage and current. The power supply and cabling must present low impedance to the evaluation board. Insufficient cabling or a high impedance power supply will cause voltage droop during turn-on due to the evaluation board inrush current. If large enough, this droop will cause a chattering condition upon power up. This chattering condition is an interaction with the evaluation board undervoltage lockout, the cabling impedance and the inrush current.

6 Loading

An appropriate electronic load, with specified operation down to 1.0V minimum, is desirable. The resistance of a maximum load is 0.11 Ω . The high output current requires thick cables! If resistor banks are used there are certain precautions to be taken. The wattage and current ratings must be adequate for a 30A, 100W supply. Monitor both current and voltage at all times. Ensure there is sufficient cooling provided for the load.

7 Air Flow

Full power loading should never be attempted without providing the specified 200 CFM of air flow over the evaluation board. A standalone fan should be provided.

8 Powering Up

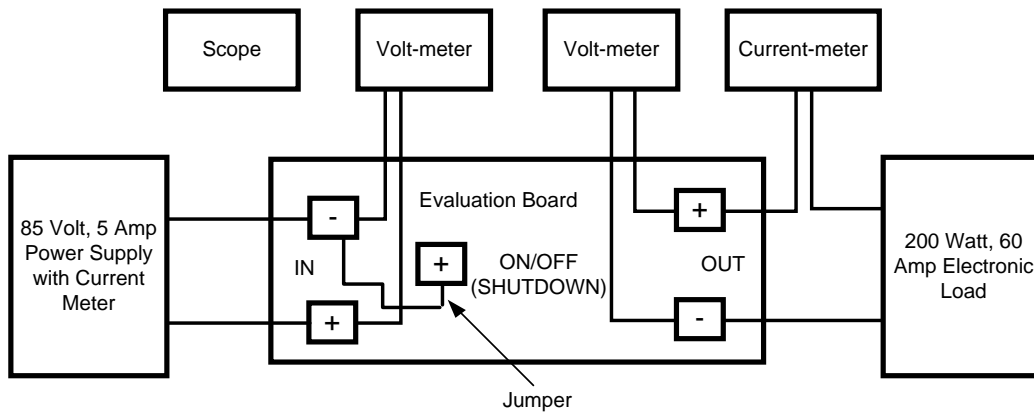
Using the ON/OFF pin (J2) provided will allow powering up the source supply with the current level set low. It is suggested that the load be kept low during the first power up. Set the current limit of the source supply to provide about 1.5 times the wattage of the load. As you remove the connection from the ON/OFF pin to ground (J1), immediately check for 3.3 volts at the output.

A most common occurrence, that will prove unnerving, is when the current limit set on the source supply is insufficient for the load. The result is similar to having the high source impedance referred to earlier. The interaction of the source supply folding back and the evaluation board going into undervoltage shutdown will start an oscillation, or chatter, that may have undesirable consequences.

A quick efficiency check is the best way to confirm that everything is operating properly. If something is amiss you can be reasonably sure that it will affect the efficiency adversely. Few parameters can be incorrect in a switching power supply without creating losses and potentially damaging heat.

9 Over Current Protection

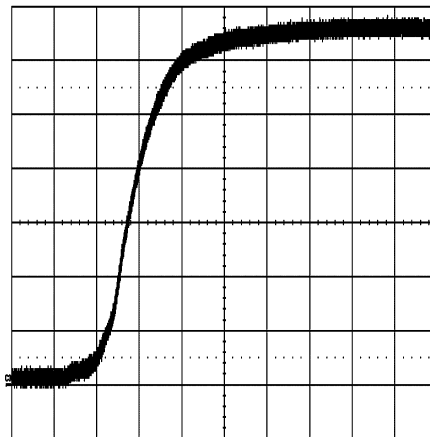
The evaluation board is configured with hiccup over-current protection. In the event of an output overload (approximately 35A) the unit will discharge the softstart capacitor, which disables the power stage. After a delay the softstart is released. The shutdown, delay and slow recharge time of the softstart capacitor protects the unit, especially during short circuit event where the stress is highest.


Figure 2. Typical Evaluation Setup

10 Performance Characteristics

10.1 Turn-on waveforms

When applying power to the LM5035A evaluation board a certain sequence of events occurs. Soft-start capacitor values and other components allow for a minimal output voltage for a short time until the feedback loop can stabilize without overshoot. [Figure 3](#) shows the output voltage during a typical start-up with a 48V input and a load of 5A. There is no overshoot during startup.

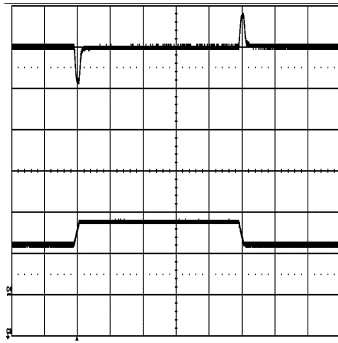


Conditions: Input Voltage = 48VDC
 Output Current = 5A
 Trace 1: Output Voltage Volts/div = 500mV
 Horizontal Resolution = 0.5ms/div

Figure 3. Output Voltage During a Typical Start-up Sequence

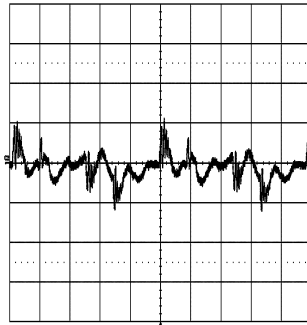
10.2 Output Ripple Waveforms

[Figure 4](#) shows the transient response for a load change from 15A to 22.5A. The upper trace shows minimal output voltage droop and overshoot during the sudden change in output current shown by the lower trace.



Conditions: Input Voltage = 48VDC
 Output Current = 15A to 22.5A
 Upper Trace: Output Voltage Volts/div = 50mV
 Lower Trace: Output Current = 15A to 22.5A to 15A
 Horizontal Resolution = 0.5ms/div

Figure 4. Transient Response for Load Change from 15A to 22.5A



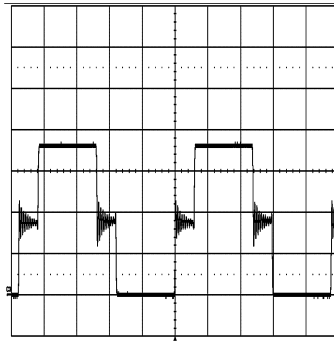
Conditions: Input Voltage = 48VDC
 Output Current = 30A
 Bandwidth Limit = 20MHz
 Trace 1: Output Ripple Voltage Volts/div = 20mV
 Horizontal Resolution = 1μs/div

Figure 5. Typical Output Ripple

Figure 5 shows typical output ripple seen across the output terminals (with standard 10μF and 1μF ceramic capacitors) for an input voltage of 48V and a load of 30A. This waveform is typical of most loads and input voltages.

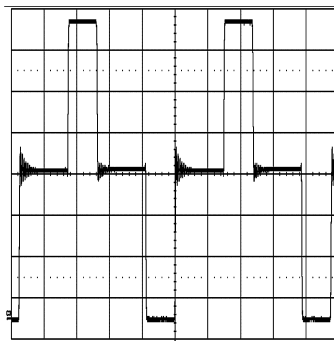
Figure 6 and Figure 7 show the drain voltage of Q1 with a 5A load. Figure 6 represents an input voltage of 36V and Figure 7 represents an input voltage of 72V.

Figure 8 shows the gate voltages of the synchronous rectifiers. The deadtime provided by the 20kΩ DLY resistor is difficult to see at this timescale.



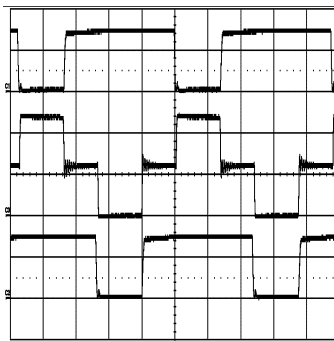
Conditions: Input Voltage = 36VDC
 Output Current = 5A
 Trace 1: Q1 drain voltage Volts/div = 10V
 Horizontal Resolution = 1 μ s/div

Figure 6. Drain Voltage of Q1 With 5A Load - 36V Input Voltage



Conditions: Input Voltage = 72VDC
 Output Current = 5A
 Trace 1: Q2 drain voltage Volts/div = 10V
 Horizontal Resolution = 1 μ s/div

Figure 7. Drain Voltage of Q1 With 5A Load - 72V Input Voltage



Conditions: Input Voltage = 48VDC
 Output Current = 5A
 Upper Trace: SR1, Q4 gate Volts/div = 5V
 Middle Trace: HS, Q2 drain Volts/div = 20V
 Lower Trace: SR2, Q6 gate Volts/div = 5V
 Horizontal Resolution = 1 μ s/div

Figure 8. Gate Voltages of Synchronous Rectifiers

11 Application Circuit

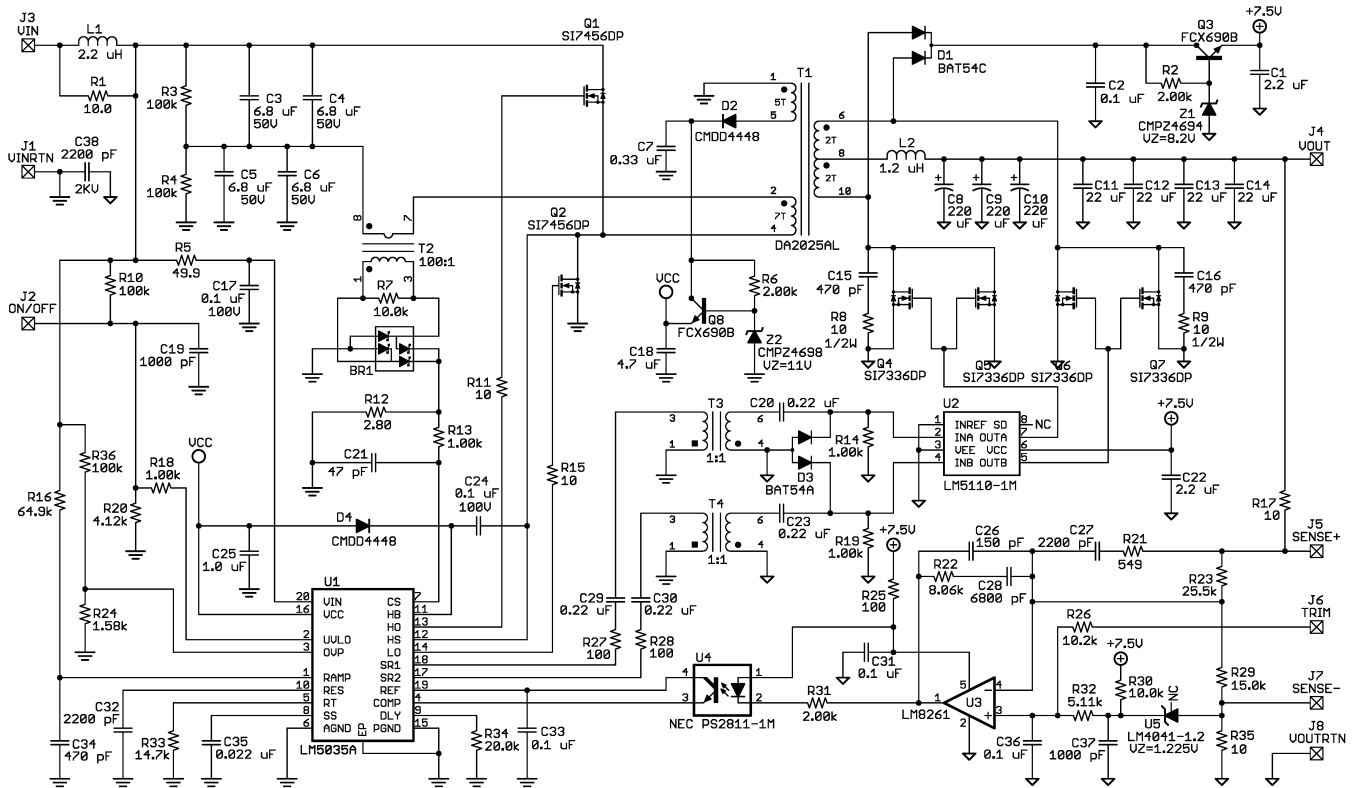


Figure 9. Application Circuit: Input 36 to 75V, Output 3.3V, 30A

Table 1. Bill of Materials

DESIGNATOR	QTY	PART NUMBER	DESCRIPTION	VALUE
BR1	1	BAT54BRW	RECTIFIER, BRIDGE, DIODES INC	30V
C1,22	2	C2012X7R1C225K	CAPACITOR, 0805 X7R CER, TDK	2.2μ, 16V
C2,31,33,36	4	C1608X7R1H104K	CAPACITOR, 0603 X7R CER, TDK	0.1μ, 50V
C3 - 6	4	C4532X7R1H685M	CAPACITOR, 1812 X7R CER, TDK	6.8μ, 50V
C7	1	C2012X7R1H334K	CAPACITOR, 0805 X7R CER, TDK	0.33μ, 50V
C8 - 10	3	6TPE220MI	CAPACITOR, POSCAP, SANYO	220μ, 6.3V
C11 - 14	4	C3216X5R0J226M	CAPACITOR, 1206 X5R CER, TDK	22μ, 6.3V
C15, 16	2	C0805C471M5RAC	CAPACITOR, 0805 COG CER, KEMET	470p, 50V
C17, 24	2	C2012X7R2A104K	CAPACITOR, 0805 X7R CER, TDK	0.1μ, 100V
C18	1	C3216X7R1C475K	CAPACITOR, 1206 X7R CER, TDK	4.7μ, 16V
C19,37	2	C1608X7R1H102K	CAPACITOR, 0603 X7R CER, TDK	1000p, 50V
C20,23,29,30	4	C1608X7R1E224K	CAPACITOR, 0603 X7R CER, TDK	0.22μ, 25V
C21	1	C1608C0G1H470J	CAPACITOR, 0603 X7R CER, TDK	47p, 50V
C25	1	C1608X7R1C105K	CAPACITOR, 0603 X7R CER, TDK	1.0μ, 16V
C26	1	C1608C0G1H151J	CAPACITOR, 0603 COG CER, TDK	150p, 50V
C27,32	2	C1608C0G1H222J	CAPACITOR, 0603 COG CER, TDK	2200p, 50V
C28	1	C1608C0G 1H682J	CAPACITOR, 0603 COG CER, TDK	6800p, 50V
C35	1	C1608COG 1E223J	CAPACITOR, 0603 COG CER, TDK	0.022μ, 25V
C34	1	C1608C0G1H471J	CAPACITOR, 0603 COG CER, TDK	470p, 50V
C38	1	C4532X7R3D222K	CAPACITOR, 1812 X7R CER, TDK	2200p, 2000V
D1	1	BAT54C	DIODE, SOT-23 SCHOTTKY, VISHAY	200mA, 30V

Table 1. Bill of Materials (continued)

DESIGNATOR	QTY	PART NUMBER	DESCRIPTION	VALUE
D2,4	2	CMD4448	DIODE, SOD-323, CENTRAL SEMI	250mA, 75V
D3	1	BAT54A	DIODE, SOT-23 SCHOTTKY, VISHAY	200mA, 30V
L1	1	RLF7030T-2R2M5R4	INDUCTOR, TDK	2.2μH, 5.4A
L2	1	SER2010-122MX	INDUCTOR, COILCRAFT	1.2μH, 37A
Q1,2	2	SI7456DP	N-FET, SILICONIX	100V, 25mΩ
Q3,8	2	FCX690B	NPN, ZETEX	45V, 2A
Q4 - 7	4	SI7336ADP	N-FET, SILICONIX	30V, 3mΩ
R1,11,15	3	CRCW080510R0F	RESISTOR, 0805, VISHAY	10
R7,30	2	CRCW06031002F	RESISTOR, 0603, VISHAY	10kΩ
R2	1	CRCW08052001F	RESISTOR, 0805, VISHAY	2.00kΩ
R3,4	2	CRCW06031003F	RESISTOR, 0603, VISHAY	100kΩ
R5	1	CRCW080549R9F	RESISTOR, 0805, VISHAY	49.9Ω
R6	1	CRCW08051002F	RESISTOR, 0805, VISHAY	10kΩ
R8,9	2	CRCW201010R0F	RESISTOR, 2010, VISHAY	10Ω
R10,36	2	CRCW08051003F	RESISTOR, 0805, VISHAY	100kΩ
R16	1	CRCW08056492F	RESISTOR, 0805, VISHAY	64.9kΩ
R12	1	CRCW06032R80F	RESISTOR, 0603, VISHAY	2.8Ω
R13,14,18,19	4	CRCW06031001F	RESISTOR, 0603, VISHAY	1kΩ
R17,35	2	CRCW060310R0F	RESISTOR, 0603, VISHAY	10Ω
R20	1	CRCW06034121F	RESISTOR, 0603, VISHAY	4.12kΩ
R21	1	CRCW06035490F	RESISTOR, 0603, VISHAY	549Ω
R22	1	CRCW06038061F	RESISTOR, 0603, VISHAY	8.06kΩ
R23	1	CRCW06032552F	RESISTOR, 0603, VISHAY	25.5kΩ
R24	1	CRCW06031581F	RESISTOR, 0603, VISHAY	1.58kΩ
R25,27,28	3	CRCW06031000F	RESISTOR, 0603, VISHAY	100Ω
R26	1	CRCW06031022F	RESISTOR, 0603, VISHAY	10.2kΩ
R29	1	CRCW06031502F	RESISTOR, 0603, VISHAY	15kΩ
R31	1	CRCW06032001F	RESISTOR, 0603, VISHAY	2.00kΩ
R32	1	CRCW06035111F	RESISTOR, 0603, VISHAY	5.11kΩ
R33	1	CRCW06031472F	RESISTOR, 0603, VISHAY	14.7kΩ
R34	1	CRCW06032002F	RESISTOR, 0603, VISHAY	20kΩ
T1	1	DA2025-AL	POWER XFR, COILCRAFT	8:5:2:2
T2	1	P8208	CURRENT XFR, PULSE ENG	100:1, 10A
T3,4	2	SM76924	GATE XFR, DATATRONIC	1:1
U1	1	LM5035	CONTROLLER, Texas Instruments	
U2	1	LM5110	DRIVER, DUAL, Texas Instruments	
U3	1	LM8261	OPAMP, SOT23-5, Texas Instruments	
U4	1	PS2811-1M	OPTO-COUPLER, NEC	
U5	1	LM4041	REFERENCE, SOT23, Texas Instruments	1.225V
Z1	1	CMPZ4694	ZENER, SOT23, CENTRAL SEMI	8.2V, 5%
Z2	1	CMPZ4698	ZENER, SOT23, CENTRAL SEMI	11V, 5%
J1,2,3,5,6,7	6	3104-2-00-01-00-00-08-0	0.040" PIN, MILL-MAX	
J4,8	2	3231-2-00-01-00-00-08-0	0.080" PIN, MILL-MAX	

12 PCB Layouts

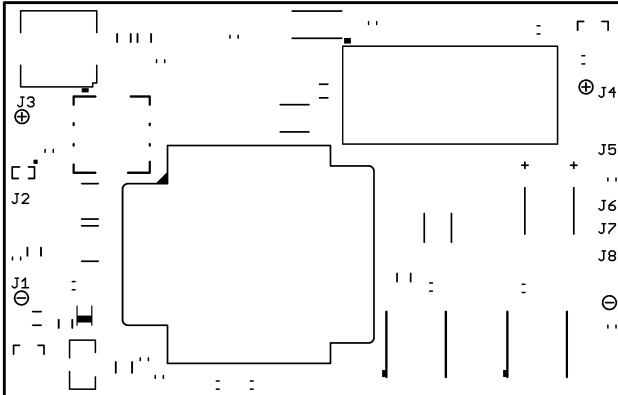


Figure 10. Top Side

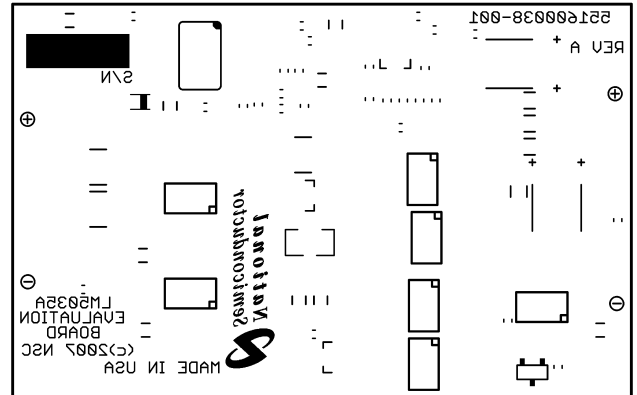


Figure 11. Bottom Side

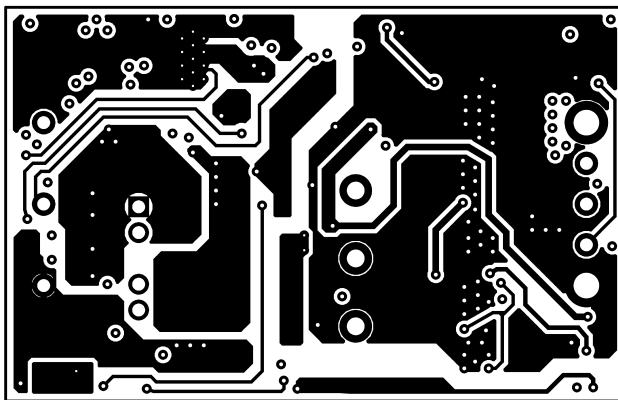


Figure 12. Layer 1

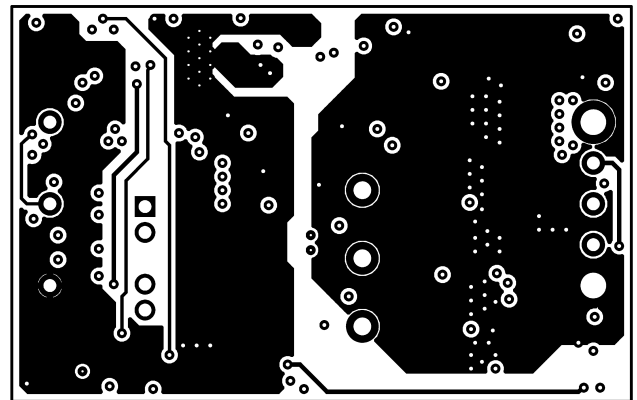


Figure 13. Layer 2

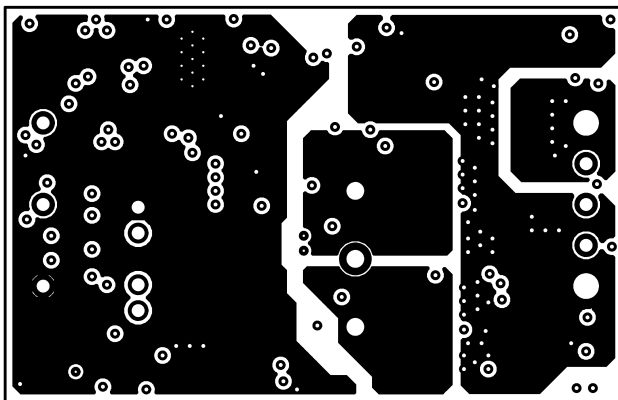


Figure 14. Layer 3

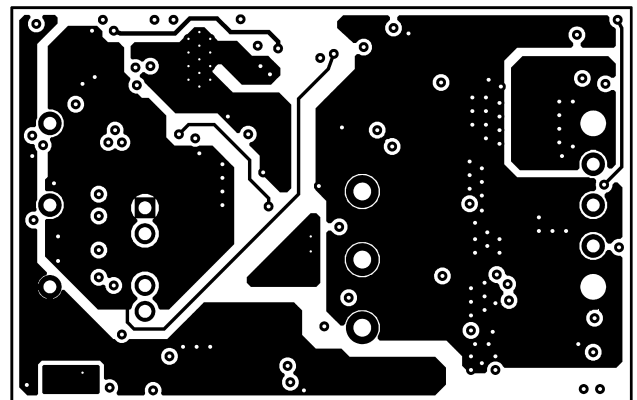


Figure 15. Layer 4

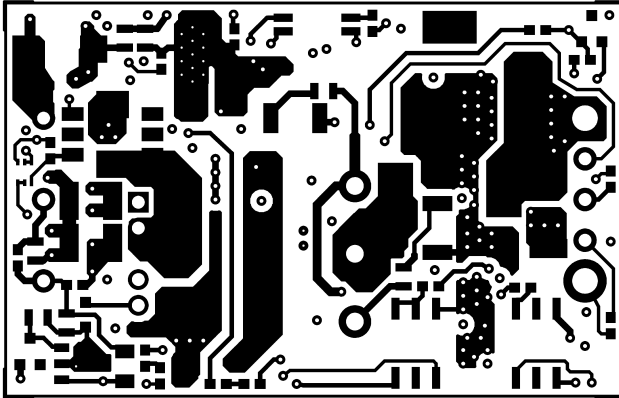


Figure 16. Layer 5

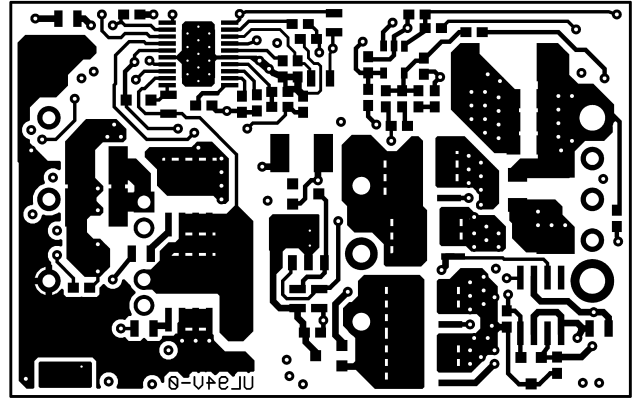


Figure 17. Layer 6

IMPORTANT NOTICE

Texas Instruments Incorporated and its subsidiaries (TI) reserve the right to make corrections, enhancements, improvements and other changes to its semiconductor products and services per JESD46, latest issue, and to discontinue any product or service per JESD48, latest issue. Buyers should obtain the latest relevant information before placing orders and should verify that such information is current and complete. All semiconductor products (also referred to herein as "components") are sold subject to TI's terms and conditions of sale supplied at the time of order acknowledgment.

TI warrants performance of its components to the specifications applicable at the time of sale, in accordance with the warranty in TI's terms and conditions of sale of semiconductor products. Testing and other quality control techniques are used to the extent TI deems necessary to support this warranty. Except where mandated by applicable law, testing of all parameters of each component is not necessarily performed.

TI assumes no liability for applications assistance or the design of Buyers' products. Buyers are responsible for their products and applications using TI components. To minimize the risks associated with Buyers' products and applications, Buyers should provide adequate design and operating safeguards.

TI does not warrant or represent that any license, either express or implied, is granted under any patent right, copyright, mask work right, or other intellectual property right relating to any combination, machine, or process in which TI components or services are used. Information published by TI regarding third-party products or services does not constitute a license to use such products or services or a warranty or endorsement thereof. Use of such information may require a license from a third party under the patents or other intellectual property of the third party, or a license from TI under the patents or other intellectual property of TI.

Reproduction of significant portions of TI information in TI data books or data sheets is permissible only if reproduction is without alteration and is accompanied by all associated warranties, conditions, limitations, and notices. TI is not responsible or liable for such altered documentation. Information of third parties may be subject to additional restrictions.

Resale of TI components or services with statements different from or beyond the parameters stated by TI for that component or service voids all express and any implied warranties for the associated TI component or service and is an unfair and deceptive business practice. TI is not responsible or liable for any such statements.

Buyer acknowledges and agrees that it is solely responsible for compliance with all legal, regulatory and safety-related requirements concerning its products, and any use of TI components in its applications, notwithstanding any applications-related information or support that may be provided by TI. Buyer represents and agrees that it has all the necessary expertise to create and implement safeguards which anticipate dangerous consequences of failures, monitor failures and their consequences, lessen the likelihood of failures that might cause harm and take appropriate remedial actions. Buyer will fully indemnify TI and its representatives against any damages arising out of the use of any TI components in safety-critical applications.

In some cases, TI components may be promoted specifically to facilitate safety-related applications. With such components, TI's goal is to help enable customers to design and create their own end-product solutions that meet applicable functional safety standards and requirements. Nonetheless, such components are subject to these terms.

No TI components are authorized for use in FDA Class III (or similar life-critical medical equipment) unless authorized officers of the parties have executed a special agreement specifically governing such use.

Only those TI components which TI has specifically designated as military grade or "enhanced plastic" are designed and intended for use in military/aerospace applications or environments. Buyer acknowledges and agrees that any military or aerospace use of TI components which have **not** been so designated is solely at the Buyer's risk, and that Buyer is solely responsible for compliance with all legal and regulatory requirements in connection with such use.

TI has specifically designated certain components as meeting ISO/TS16949 requirements, mainly for automotive use. In any case of use of non-designated products, TI will not be responsible for any failure to meet ISO/TS16949.

Products

Audio	www.ti.com/audio
Amplifiers	amplifier.ti.com
Data Converters	dataconverter.ti.com
DLP® Products	www.dlp.com
DSP	dsp.ti.com
Clocks and Timers	www.ti.com/clocks
Interface	interface.ti.com
Logic	logic.ti.com
Power Mgmt	power.ti.com
Microcontrollers	microcontroller.ti.com
RFID	www.ti-rfid.com
OMAP Applications Processors	www.ti.com/omap
Wireless Connectivity	www.ti.com/wirelessconnectivity

Applications

Automotive and Transportation	www.ti.com/automotive
Communications and Telecom	www.ti.com/communications
Computers and Peripherals	www.ti.com/computers
Consumer Electronics	www.ti.com/consumer-apps
Energy and Lighting	www.ti.com/energy
Industrial	www.ti.com/industrial
Medical	www.ti.com/medical
Security	www.ti.com/security
Space, Avionics and Defense	www.ti.com/space-avionics-defense
Video and Imaging	www.ti.com/video

TI E2E Community

e2e.ti.com