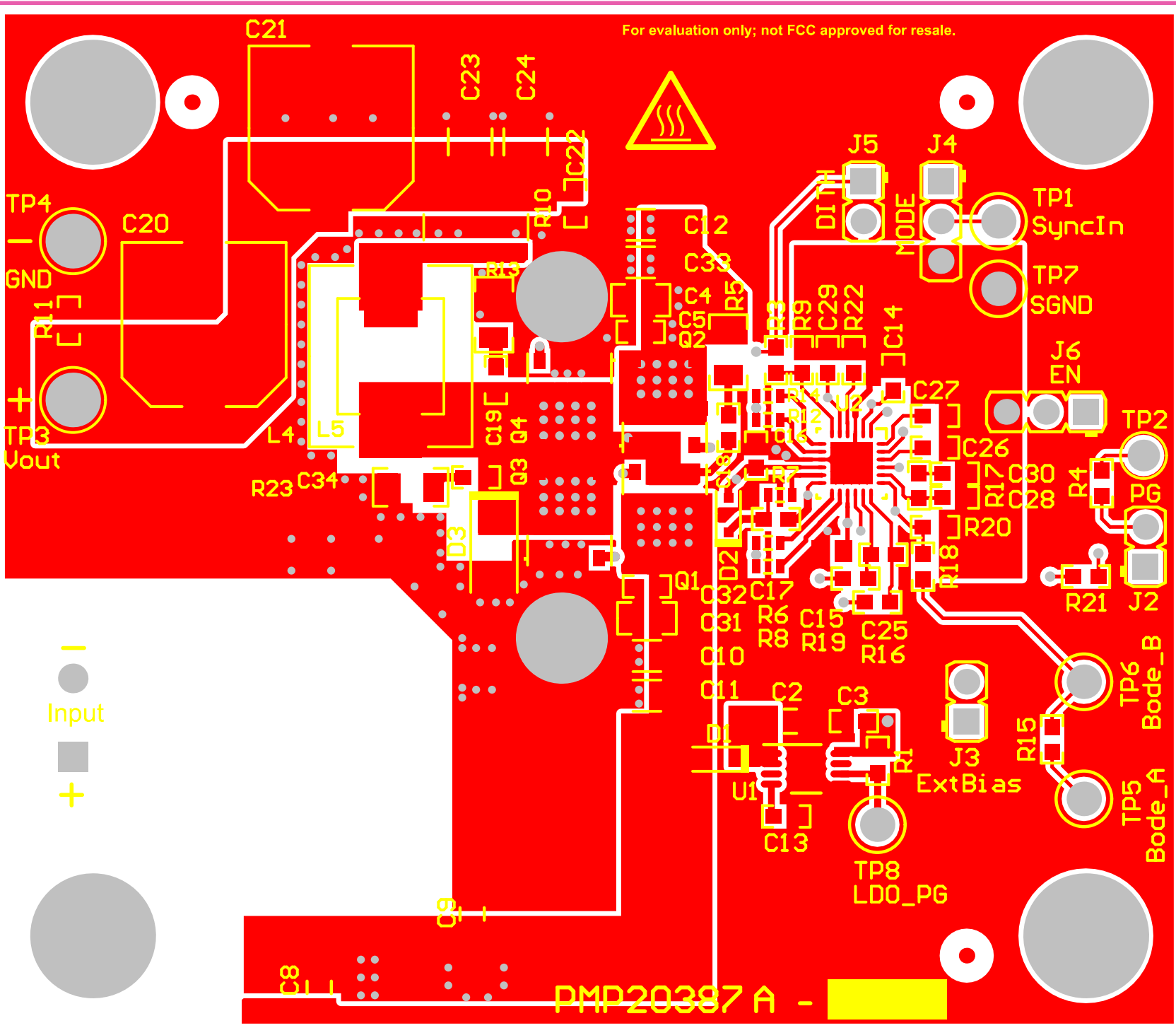


2300.00mil

3000.00mil

For evaluation only; not FCC approved for resale.



Input
●
+
■

PMP20387 A -

TP4
GND
TP3
Vout

C20

R11

+

TP3
Vout

C21

C23

C24

R10

C22

TP4

GND

+

TP3
Vout

L4

L5

R23

C34

Q3

Q4

D3

Q1

Q2

Q9

C8

C12

C33

C4

Q5

Q6

Q7

Q8

Q10

Q11

Q12

Q13

Q14

Q15

Q16

Q17

Q18

Q19

Q20

Q21

Q22

Q23

R9

R29

R30

R31

R32

R33

R34

R35

R36

R37

R38

R39

R40

R41

R42

R43

R44

R45

R46

R47

R48

R49

C17

C18

C19

C20

C21

C22

C23

C24

C25

C26

C27

C28

C29

C30

C31

C32

C33

C34

R5

R6

R7

R8

R9

R10

R11

R12

R13

R14

R15

R16

R17

R18

R19

R20

R21

R22

D1

D2

D3

D4

D5

D6

D7

D8

D9

D10

D11

D12

D13

D14

D15

D16

D17

D18

D19

D20

J5

J4

J3

J2

J1

J6

J7

J8

J9

J10

J11

J12

J13

J14

J15

J16

J17

J18

J19

J20

J21

J22

TP1
SyncIn

TP7
SGND

J6
EN

TP2

TP6
Bode_B

J2

TP5
Bode_A

J4

J5

J6

J7

J8

TP8
LDO_PG

TP3
Vout

TP4
GND

TP5
Bode_A

TP6
Bode_B

TP7
SGND

TP8
LDO_PG

TP9
ExtBias

TP10
ExtBias

TP11
ExtBias

TP12
ExtBias

TP13
ExtBias

TP14
ExtBias

TP15
ExtBias

TP16
ExtBias

TP17
ExtBias

TP18
ExtBias

TP19
ExtBias

TP20
ExtBias

TP21
ExtBias

TP22
ExtBias

TP23
ExtBias

TP24
ExtBias

TP25
ExtBias

TP26
ExtBias

TP27
ExtBias

TP28
ExtBias

TP29
ExtBias

TP30
ExtBias

TP31
ExtBias

TP32
ExtBias

TP33
ExtBias

TP34
ExtBias

TP35
ExtBias

TP36
ExtBias

TP37
ExtBias

TP38
ExtBias

TP39
ExtBias

TP40
ExtBias

TP41
ExtBias

TP42
ExtBias

TP43
ExtBias

TP44
ExtBias

TP45
ExtBias

TP46
ExtBias

TP47
ExtBias

TP48
ExtBias

TP49
ExtBias

TP50
ExtBias

TP51
ExtBias

TP52
ExtBias

TP53
ExtBias

TP54
ExtBias

TP55
ExtBias

TP56
ExtBias

TP57
ExtBias

TP58
ExtBias

TP59
ExtBias

TP60
ExtBias

TP61
ExtBias

TP62
ExtBias

TP63
ExtBias

TP64
ExtBias

TP65
ExtBias

TP66
ExtBias

TP67
ExtBias

TP68
ExtBias

TP69
ExtBias

TP70
ExtBias

TP71
ExtBias

TP72
ExtBias

TP73
ExtBias

TP74
ExtBias

TP75
ExtBias

TP76
ExtBias

TP77
ExtBias

TP78
ExtBias

TP79
ExtBias

TP80
ExtBias

TP81
ExtBias

TP82
ExtBias

TP83
ExtBias

TP84
ExtBias

TP85
ExtBias

TP86
ExtBias

TP87
ExtBias

TP88
ExtBias

TP89
ExtBias

TP90
ExtBias

TP91
ExtBias

TP92
ExtBias

TP93
ExtBias

TP94
ExtBias

TP95
ExtBias

TP96
ExtBias

TP97
ExtBias

TP98
ExtBias

TP99
ExtBias

TP100
ExtBias

TP101
ExtBias

TP102
ExtBias

TP103
ExtBias

TP104
ExtBias

TP105
ExtBias

TP106
ExtBias

TP107
ExtBias

TP108
ExtBias

TP109
ExtBias

TP110
ExtBias

TP111
ExtBias

TP112
ExtBias

TP113
ExtBias

TP114
ExtBias

TP115
ExtBias

TP116
ExtBias

TP117
ExtBias

TP118
ExtBias

TP119
ExtBias

TP120
ExtBias

TP121
ExtBias

TP122
ExtBias

TP123
ExtBias

TP124
ExtBias

TP125
ExtBias

TP126
ExtBias

TP127
ExtBias

TP128
ExtBias

TP129
ExtBias

TP130
ExtBias

TP131
ExtBias

TP132
ExtBias

TP133
ExtBias

TP134
ExtBias

TP135
ExtBias

TP136
ExtBias

TP137
ExtBias

TP138
ExtBias

TP139
ExtBias

TP140
ExtBias

TP141
ExtBias

TP142
ExtBias

TP143
ExtBias

TP144
ExtBias

TP145
ExtBias

TP146
ExtBias

TP147
ExtBias

TP148
ExtBias

TP149
ExtBias

TP150
ExtBias

TP151
ExtBias

TP152
ExtBias

TP153
ExtBias

TP154
ExtBias

TP155
ExtBias

TP156
ExtBias

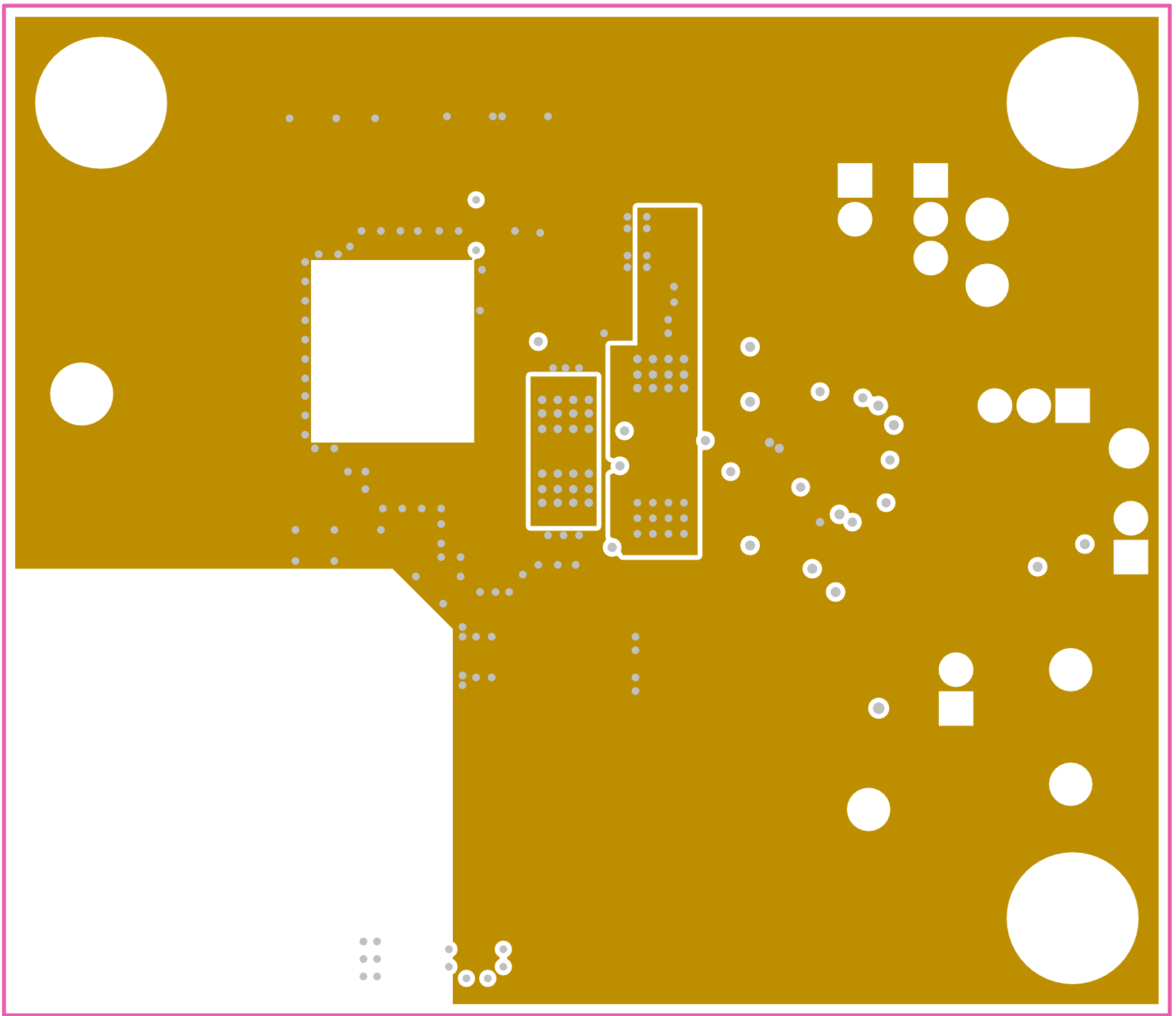
TP157
ExtBias

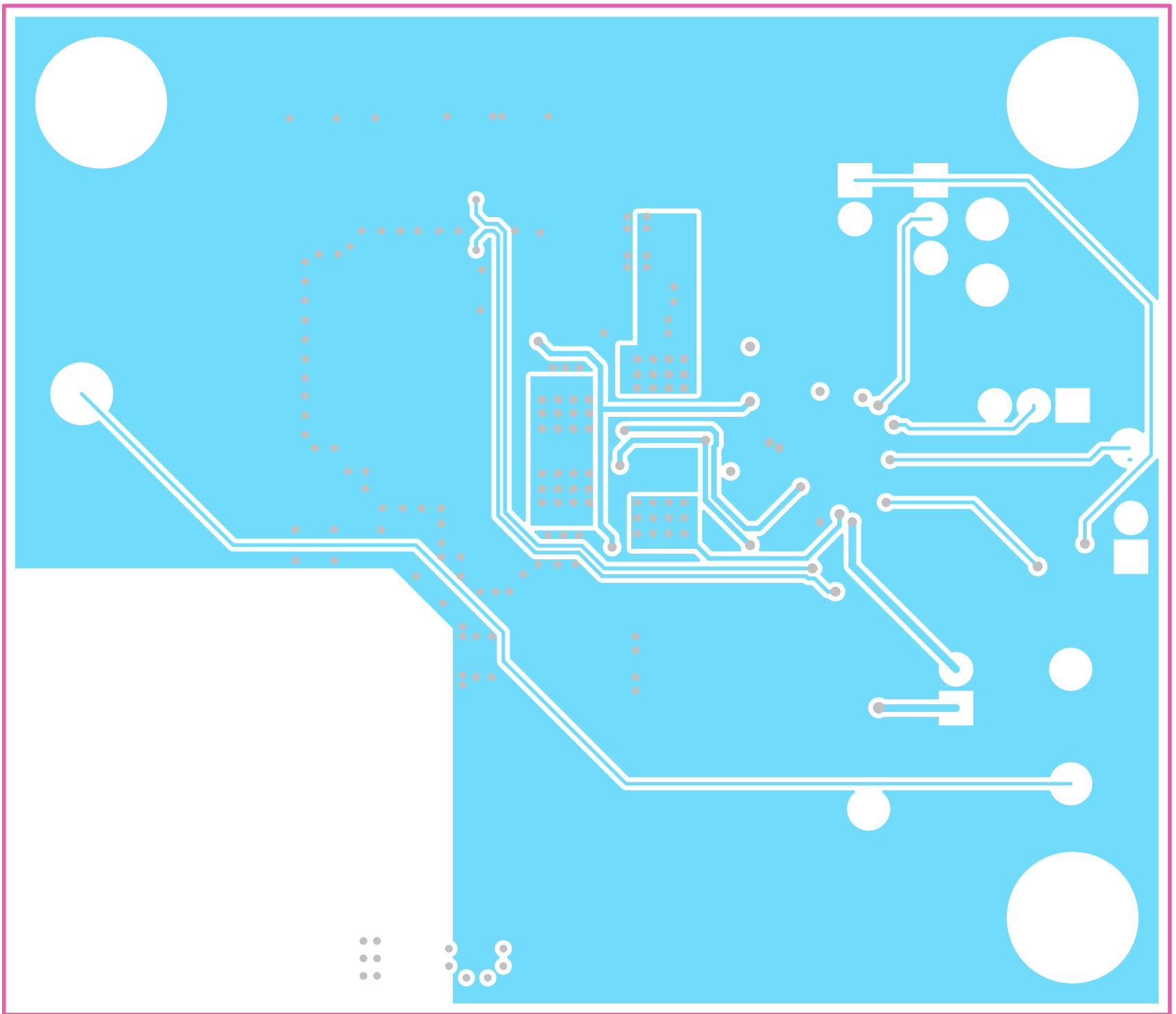
TP158
ExtBias

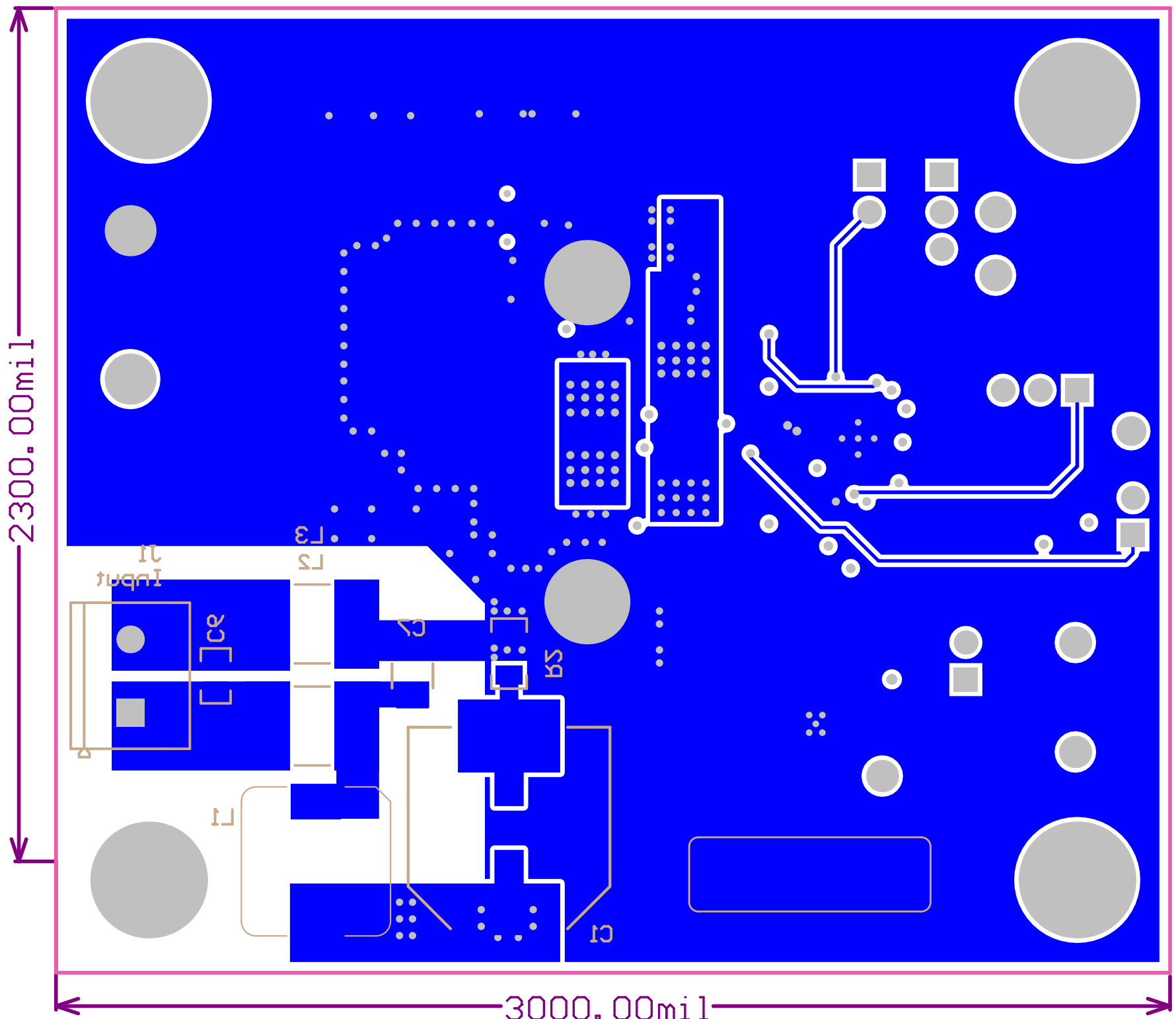
TP159
ExtBias

TP160
ExtBias

<







2300.00mil

3000.00mil

IMPORTANT NOTICE FOR TI DESIGN INFORMATION AND RESOURCES

Texas Instruments Incorporated ("TI") technical, application or other design advice, services or information, including, but not limited to, reference designs and materials relating to evaluation modules, (collectively, "TI Resources") are intended to assist designers who are developing applications that incorporate TI products; by downloading, accessing or using any particular TI Resource in any way, you (individually or, if you are acting on behalf of a company, your company) agree to use it solely for this purpose and subject to the terms of this Notice.

TI's provision of TI Resources does not expand or otherwise alter TI's applicable published warranties or warranty disclaimers for TI products, and no additional obligations or liabilities arise from TI providing such TI Resources. TI reserves the right to make corrections, enhancements, improvements and other changes to its TI Resources.

You understand and agree that you remain responsible for using your independent analysis, evaluation and judgment in designing your applications and that you have full and exclusive responsibility to assure the safety of your applications and compliance of your applications (and of all TI products used in or for your applications) with all applicable regulations, laws and other applicable requirements. You represent that, with respect to your applications, you have all the necessary expertise to create and implement safeguards that (1) anticipate dangerous consequences of failures, (2) monitor failures and their consequences, and (3) lessen the likelihood of failures that might cause harm and take appropriate actions. You agree that prior to using or distributing any applications that include TI products, you will thoroughly test such applications and the functionality of such TI products as used in such applications. TI has not conducted any testing other than that specifically described in the published documentation for a particular TI Resource.

You are authorized to use, copy and modify any individual TI Resource only in connection with the development of applications that include the TI product(s) identified in such TI Resource. NO OTHER LICENSE, EXPRESS OR IMPLIED, BY ESTOPPEL OR OTHERWISE TO ANY OTHER TI INTELLECTUAL PROPERTY RIGHT, AND NO LICENSE TO ANY TECHNOLOGY OR INTELLECTUAL PROPERTY RIGHT OF TI OR ANY THIRD PARTY IS GRANTED HEREIN, including but not limited to any patent right, copyright, mask work right, or other intellectual property right relating to any combination, machine, or process in which TI products or services are used. Information regarding or referencing third-party products or services does not constitute a license to use such products or services, or a warranty or endorsement thereof. Use of TI Resources may require a license from a third party under the patents or other intellectual property of the third party, or a license from TI under the patents or other intellectual property of TI.

TI RESOURCES ARE PROVIDED "AS IS" AND WITH ALL FAULTS. TI DISCLAIMS ALL OTHER WARRANTIES OR REPRESENTATIONS, EXPRESS OR IMPLIED, REGARDING TI RESOURCES OR USE THEREOF, INCLUDING BUT NOT LIMITED TO ACCURACY OR COMPLETENESS, TITLE, ANY EPIDEMIC FAILURE WARRANTY AND ANY IMPLIED WARRANTIES OF MERCHANTABILITY, FITNESS FOR A PARTICULAR PURPOSE, AND NON-INFRINGEMENT OF ANY THIRD PARTY INTELLECTUAL PROPERTY RIGHTS.

TI SHALL NOT BE LIABLE FOR AND SHALL NOT DEFEND OR INDEMNIFY YOU AGAINST ANY CLAIM, INCLUDING BUT NOT LIMITED TO ANY INFRINGEMENT CLAIM THAT RELATES TO OR IS BASED ON ANY COMBINATION OF PRODUCTS EVEN IF DESCRIBED IN TI RESOURCES OR OTHERWISE. IN NO EVENT SHALL TI BE LIABLE FOR ANY ACTUAL, DIRECT, SPECIAL, COLLATERAL, INDIRECT, PUNITIVE, INCIDENTAL, CONSEQUENTIAL OR EXEMPLARY DAMAGES IN CONNECTION WITH OR ARISING OUT OF TI RESOURCES OR USE THEREOF, AND REGARDLESS OF WHETHER TI HAS BEEN ADVISED OF THE POSSIBILITY OF SUCH DAMAGES.

You agree to fully indemnify TI and its representatives against any damages, costs, losses, and/or liabilities arising out of your non-compliance with the terms and provisions of this Notice.

This Notice applies to TI Resources. Additional terms apply to the use and purchase of certain types of materials, TI products and services. These include; without limitation, TI's standard terms for semiconductor products (<http://www.ti.com/sc/docs/stdterms.htm>), [evaluation modules](#), and [samples](http://www.ti.com/sc/docs/sampterm.htm) (<http://www.ti.com/sc/docs/sampterm.htm>).

Mailing Address: Texas Instruments, Post Office Box 655303, Dallas, Texas 75265
Copyright © 2017, Texas Instruments Incorporated