

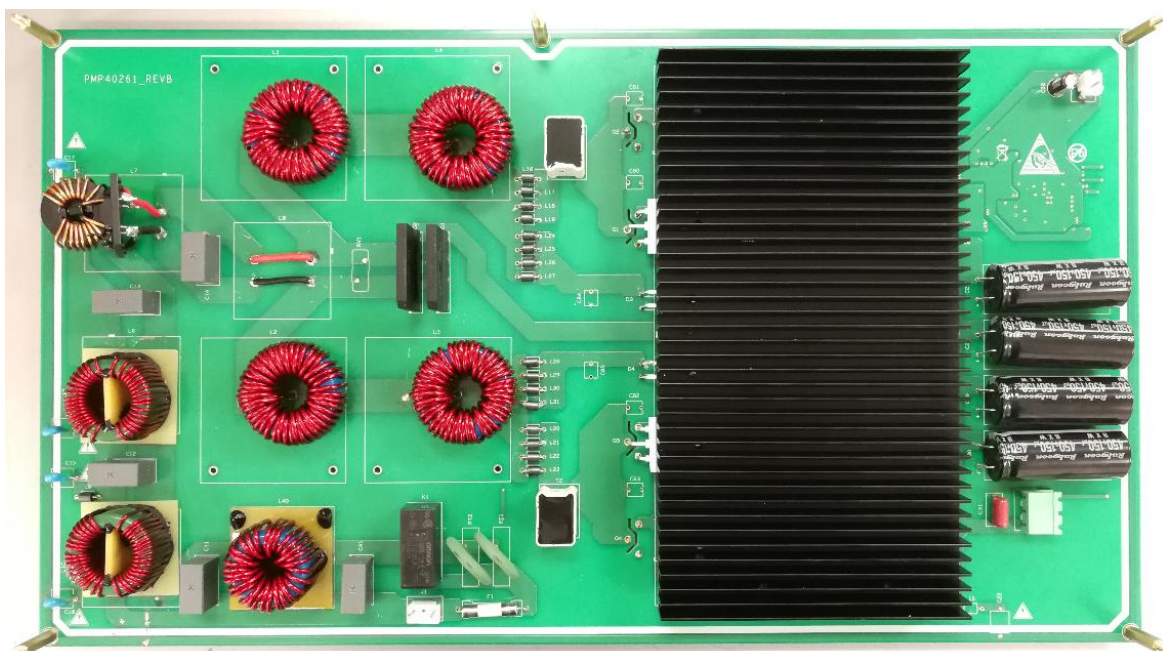
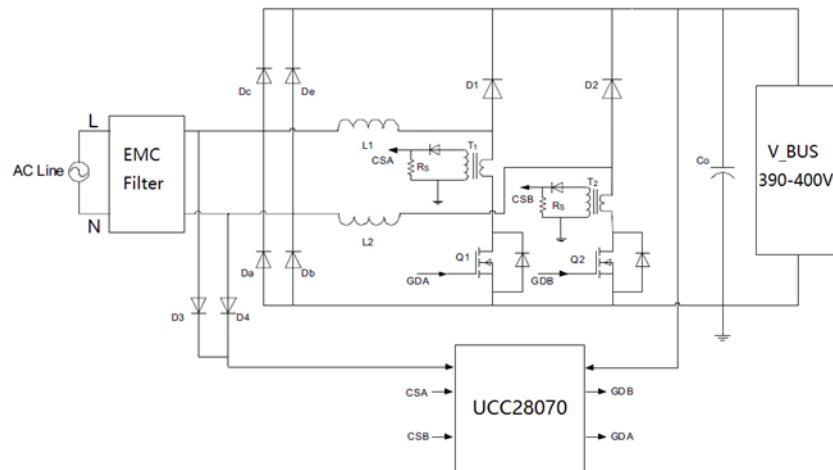
## Test Report: PMP40261

# 800-W High efficiency bridgeless Power Factor Correction (PFC) reference design



## Description

This reference design is a bridgeless Power Factor Correction (PFC) circuit using UCC28070 Interleaving CCM PFC controller to provide 390-V/2-A output from universal AC input. The circuit uses Average Current Mode PWM control with advanced internal current synthesizer for current sensing. This design achieves 96.57% peak efficiency at 115-VAC/60-Hz input and 98.07% peak efficiency at 230-VAC/50-Hz input. The Power Factor is above 0.994 at full load at 115-VAC and 230-VAC input. The thin height (<25 mm) design makes it suitable for TV and Appliances application.



An IMPORTANT NOTICE at the end of this TI reference design addresses authorized use, intellectual property matters and other important disclaimers and information.

## Test Prerequisites

### 1.1 Voltage and Current Requirements

**Table 1. Voltage and Current Requirements**

PARAMETER	SPECIFICATIONS
Input Voltage	90~264Vac
AC frequency	47~63Hz
Output Voltage	390V±5%
Maximum Output Current	2A

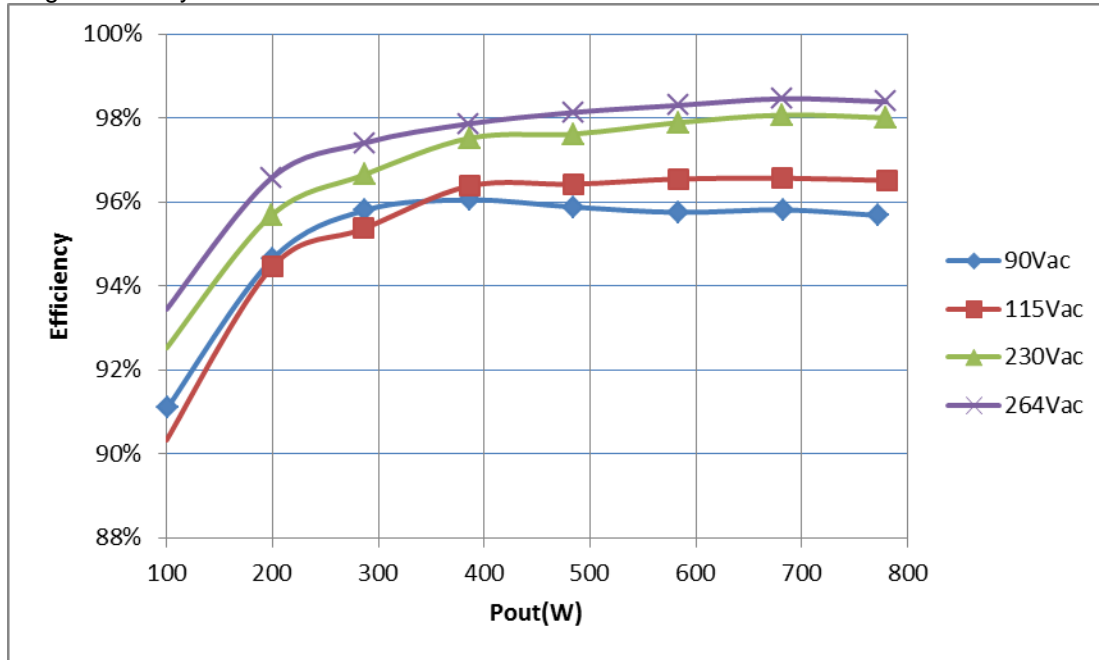
### 1.2 Required Equipment

- Chroma AC Source MODEL 61605
- Chroma DC E-load MODEL 63204
- Single Phase Power Analyzer PM100
- Tektronix DPO 3054
- DC Source GPS-3303C
- EMI Test Receiver KH3939
- Fluke TI9

## 2 Testing and Results

### 2.1 Efficiency Data

4-point average efficiency: 95.98%@115VAC/60Hz and 97.28%@230VAC/50Hz.



#### 2.1.1 90V<sub>AC</sub>/60Hz Efficiency Measurement

Pin/W	PF	THD/%	Vout/V	Iout/A	Pout/W	Loss/W	Eff./%
807.1	0.995	2.42%	385.54	2.0031	772.28	34.82	<b>95.69%</b>
712.9	0.995	2.54%	385.53	1.7718	683.08	29.82	<b>95.82%</b>
608.9	0.995	2.88%	385.5	1.5125	583.07	25.83	<b>95.76%</b>
505	0.994	3.42%	385.46	1.2562	484.21	20.79	<b>95.88%</b>
402.5	0.994	6.44%	385.42	1.0031	386.61	15.89	<b>96.05%</b>
300.4	0.994	7.51%	385.4	0.7468	287.82	12.58	<b>95.81%</b>
211.2	0.992	10.63%	385.37	0.5187	199.89	11.31	<b>94.65%</b>
111.01	0.984	18.10%	385.34	0.2625	101.15	9.86	<b>91.12%</b>

#### 2.1.2 115V<sub>AC</sub>/60Hz Efficiency Measurement

Pin/W	PF	THD/%	Vout/V	Iout/A	Pout/W	Loss/W	Eff./%
809	0.996	2.67%	385.58	2.025	780.80	28.20	<b>96.51%</b>
706.1	0.996	3.06%	385.54	1.7687	681.90	24.20	<b>96.57%</b>
603.9	0.996	3.73%	385.51	1.5125	583.08	20.82	<b>96.55%</b>
502.2	0.996	4.72%	385.5	1.2562	484.27	17.93	<b>96.43%</b>
401.1	0.996	6.95%	385.42	1.0031	386.61	14.49	<b>96.39%</b>
300.5	0.995	9.80%	385.37	0.7437	286.60	13.90	<b>95.37%</b>
211.6	0.99	13.88%	385.36	0.5187	199.89	11.71	<b>94.46%</b>
110.6	0.988	15.73%	385.32	0.2593	99.91	10.69	<b>90.34%</b>

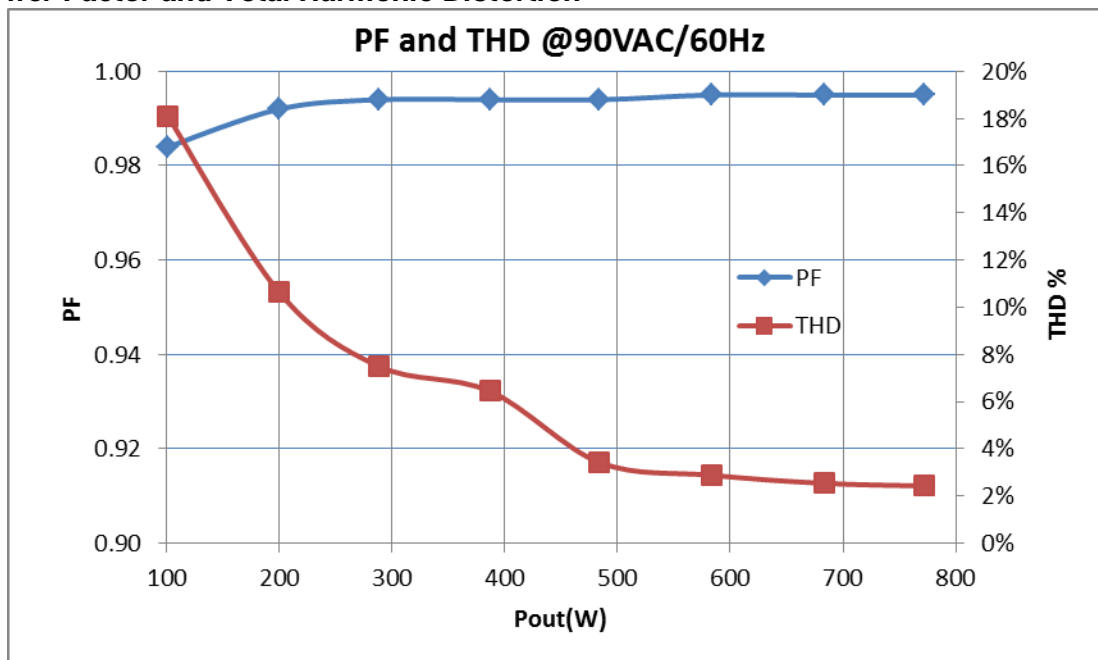
### 2.1.3 230V<sub>AC</sub>/50Hz Efficiency Measurement

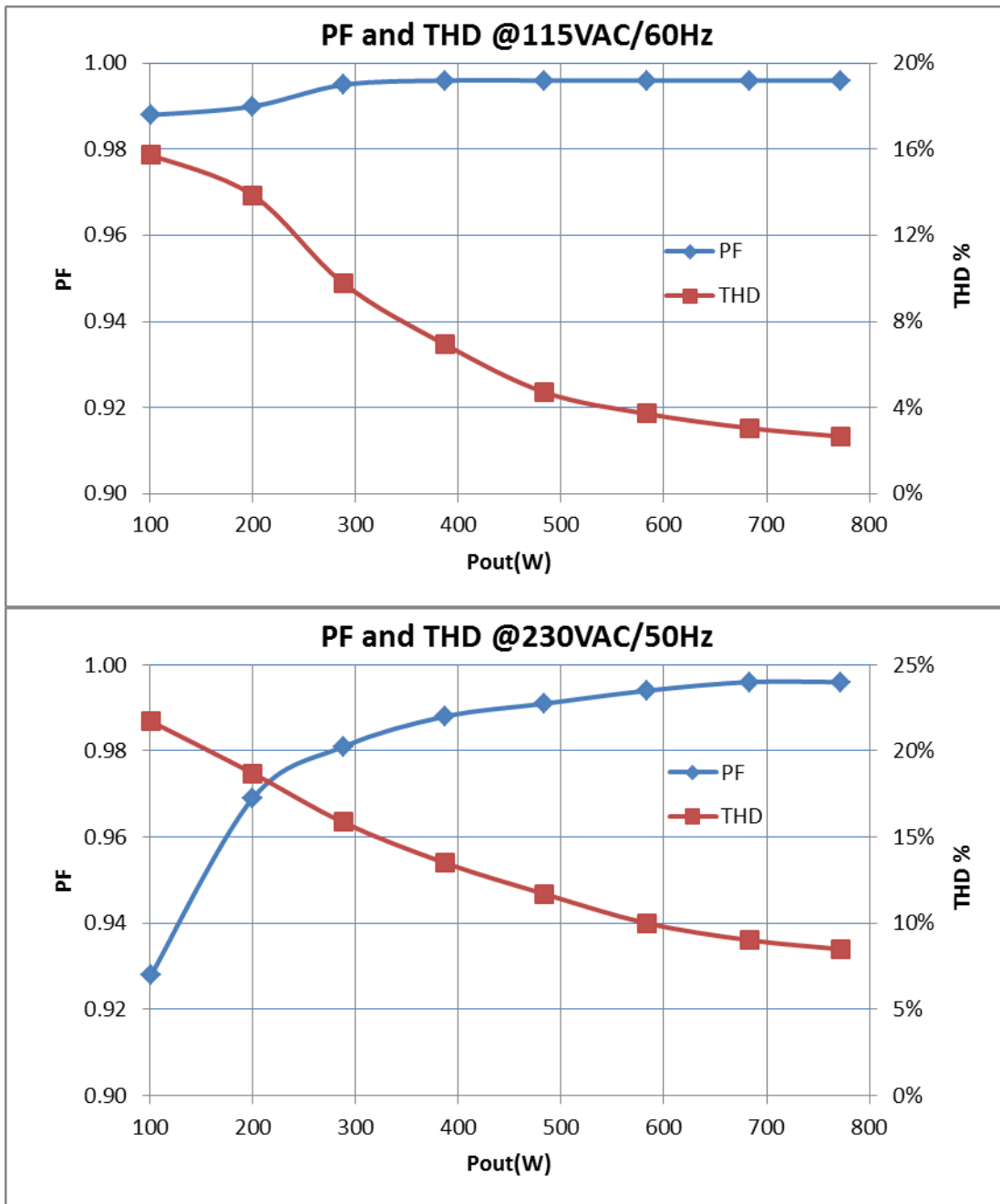
Pin/W	PF	THD/%	Vout/V	Iout/A	Pout/W	Loss/W	Eff./%
795.5	0.996	8.49%	385.62	2.0218	779.65	15.85	<b>98.01%</b>
695.4	0.996	9.02%	385.6	1.7687	682.01	13.39	<b>98.07%</b>
595.7	0.994	10.01%	385.56	1.5125	583.16	12.54	<b>97.89%</b>
496.1	0.991	11.69%	385.53	1.2562	484.30	11.80	<b>97.62%</b>
396.5	0.988	13.51%	385.5	1.0031	386.70	9.80	<b>97.53%</b>
296.6	0.981	15.86%	385.47	0.7437	286.67	9.93	<b>96.65%</b>
207.7	0.969	18.70%	385.43	0.5156	198.73	8.97	<b>95.68%</b>
108.01	0.928	21.71%	385.43	0.2593	99.94	8.07	<b>92.53%</b>

### 2.1.4 264V<sub>AC</sub>/50Hz Efficiency Measurement

Pin/W	PF	THD/%	Vout/V	Iout/A	Pout/W	Loss/W	Eff./%
792.3	0.974	22.30%	385.57	2.0218	779.55	12.75	<b>98.39%</b>
692.6	0.971	23.23%	385.57	1.7687	681.96	10.64	<b>98.46%</b>
593.2	0.966	25.13%	385.55	1.5125	583.14	10.06	<b>98.30%</b>
493.5	0.959	27.11%	385.53	1.2562	484.30	9.20	<b>98.14%</b>
393.9	0.95	29.44%	385.5	1	385.50	8.40	<b>97.87%</b>
294.3	0.936	32.01%	385.47	0.7437	286.67	7.63	<b>97.41%</b>
205.8	0.915	34.44%	385.45	0.5156	198.74	7.06	<b>96.57%</b>
106.96	0.847	35.56%	385.48	0.2593	99.95	7.01	<b>93.45%</b>

## 2.2 Power Factor and Total Harmonic Distortion

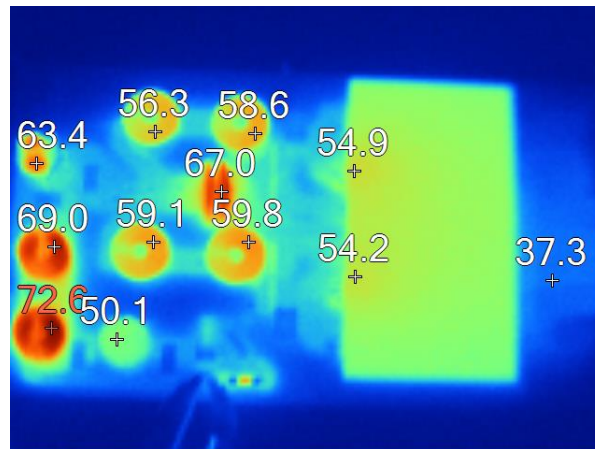




### 2.3 Thermal Images

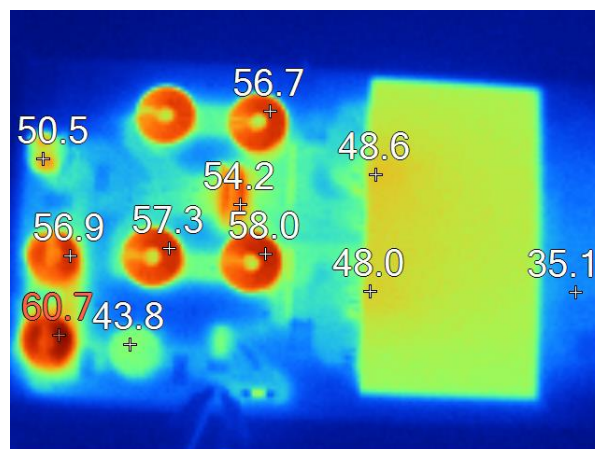
The thermal images below show a top view of the board because all the power components are on the top layer. The output load is 386V/2A. The ambient temperature was 26.5°C with no air flow.

### 2.3.1 90V<sub>AC</sub>/60Hz



Component	Value
L40 (DM choke)	50.1°C
L5 (CM choke)	72.6 °C
L6 (CM choke)	69 °C
L7 (CM choke)	63.4 °C
D1,D2 (bridge)	67 °C
L1,L4 (PFC inductor)	58.6°C
L2,L3 (PFC inductor)	59.8 °C
Q1,D3	54.9 °C
Q3,D4	54.2 °C
C27~C30 (Bulk Cap)	37.3 °C

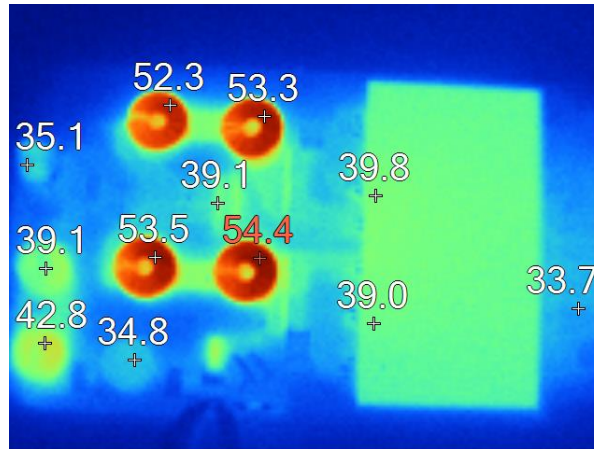
### 2.3.2 115V<sub>AC</sub>/60Hz



Component	Value
L40 (DM choke)	43.8 °C
L5 (CM choke)	60.7 °C
L6 (CM choke)	56.9 °C
L7 (CM choke)	50.5 °C
D1,D2 (bridge)	54.2 °C
L1,L4 (PFC inductor)	56.7 °C
L2,L3 (PFC inductor)	58 °C

Q1, D3	48.6 °C
Q3, D4	48 °C
C27~C30 (Bulk Cap.)	35.1 °C

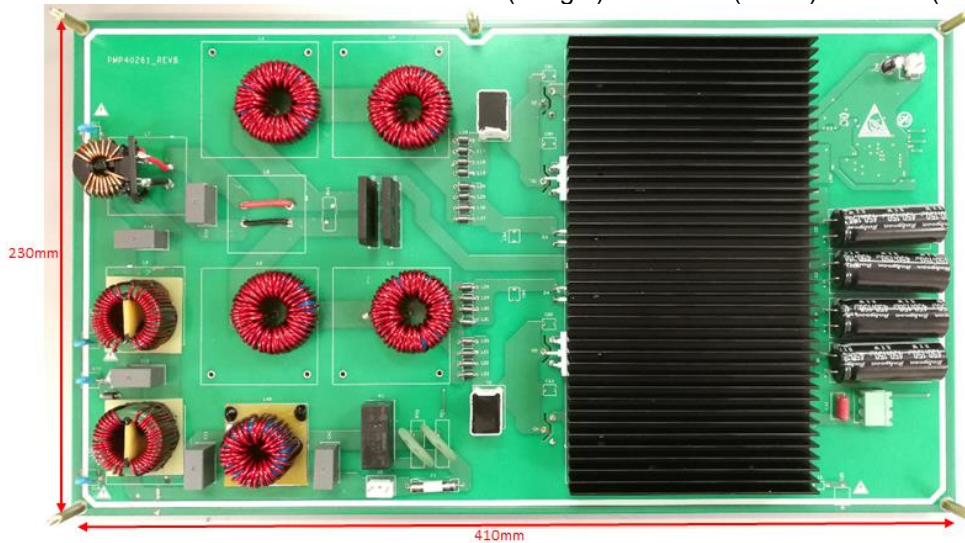
**2.3.3 230V<sub>AC</sub>/50Hz**



Component	Value
L40 (DM choke)	34.8 °C
L5 (CM choke)	42.8 °C
L6 (CM choke)	39.1 °C
L7 (CM choke)	34.4 °C
D1,D2 (bridge)	40.6 °C
L1,L4 (PFC inductor)	52.8 °C
L2,L3 (PFC inductor)	53.9 °C
Q1,Q2,D3	40.5 °C
Q3,Q4,D4	39.3 °C
C27~C30 (Bulk Cap.)	33.0 °C

**2.4 Dimensions**

The Dimension of PMP40261 Board is 410 mm (Length) x230 mm (Width) x25 mm (Height).

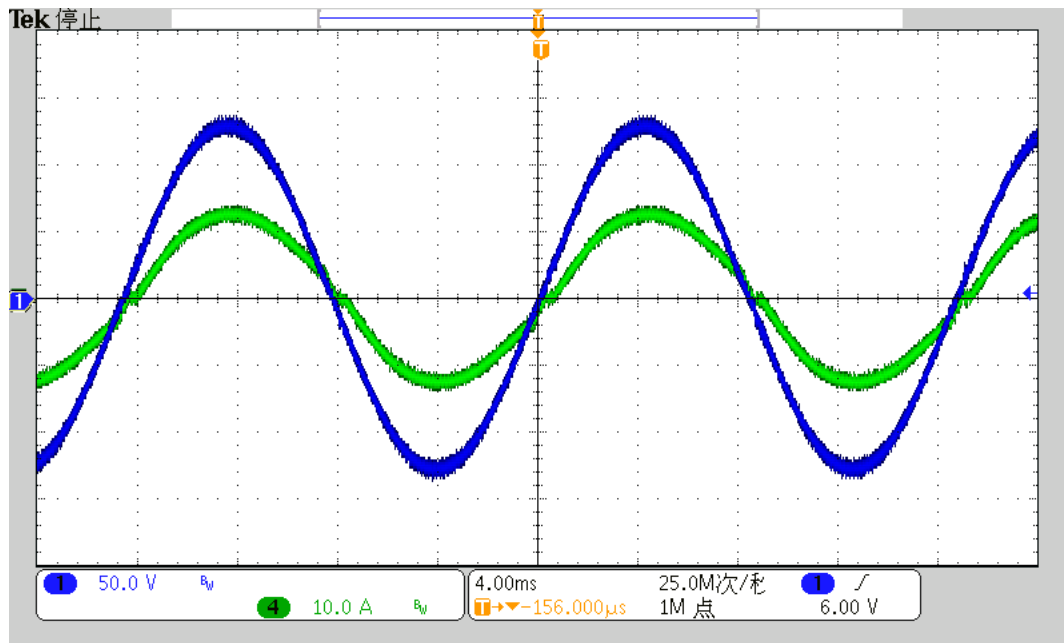


### 3 Waveforms

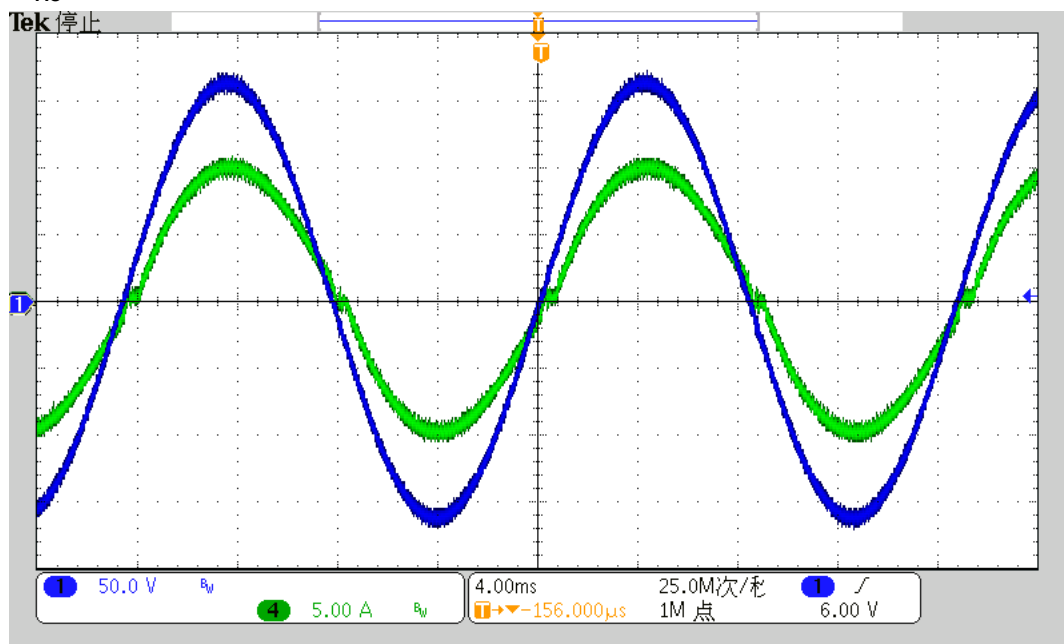
#### 3.1 Normal Operation

The input currents corresponding to different input voltages are shown in the images below, where Channel 1 is the input voltage, Channel 2 is the input current.

##### 3.1.1 90V<sub>AC</sub>/60Hz- 390V2A

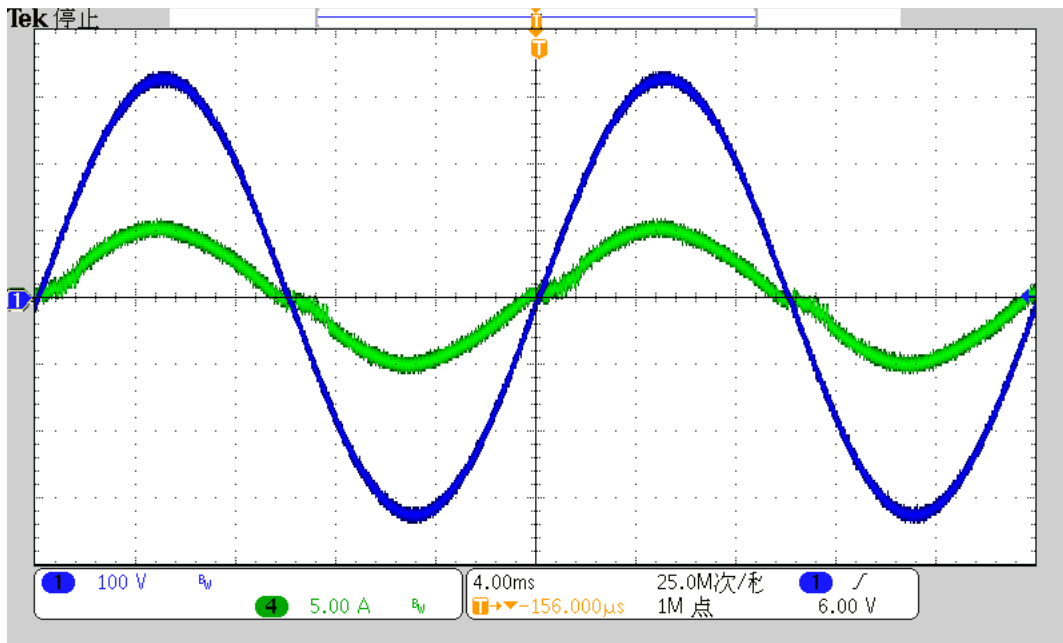


##### 3.1.2 115V<sub>AC</sub>/60Hz- 390V2A





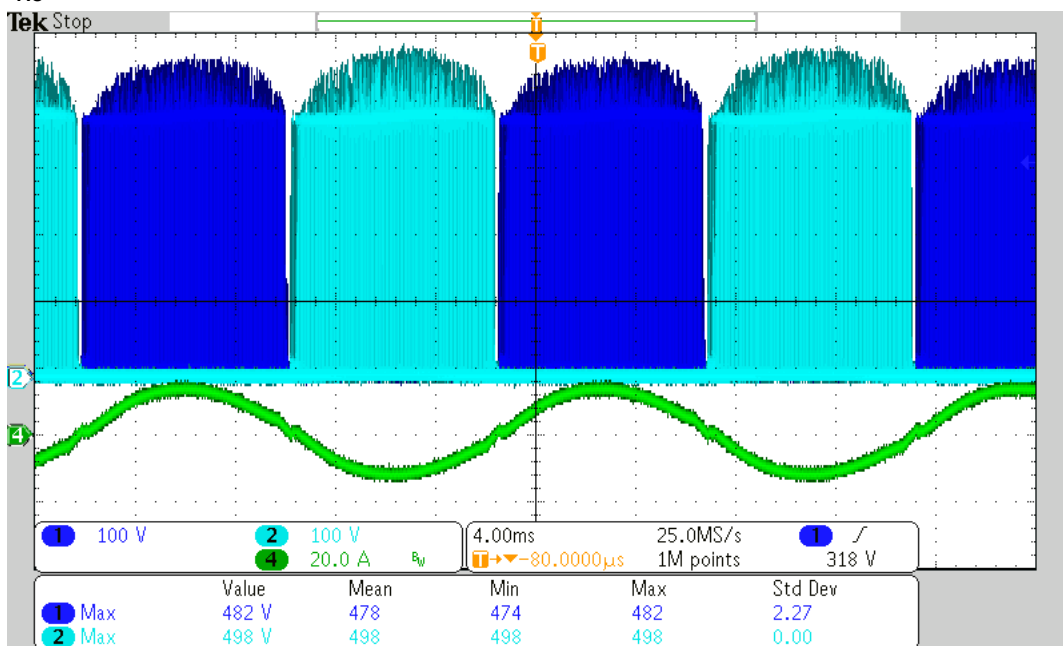
### 3.1.3 230V<sub>AC</sub>/50Hz- 390V2A



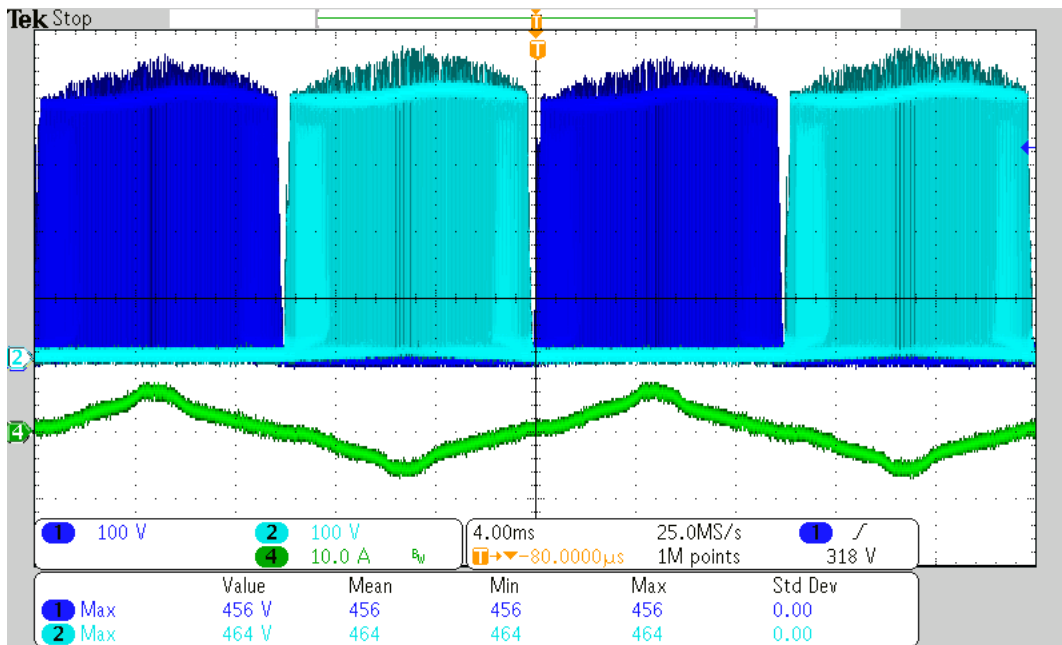
## 3.2 Switching

The Drain-Source voltage of MOSFETs are shown in the images below, where Channel 1 is the  $V_{DS}$  of Q1 and Q2, Channel 2 is the  $V_{DS}$  of Q3 and Q4, Channel 4 is the input current.

### 3.2.1 90V<sub>AC</sub>/60Hz- 390V2A



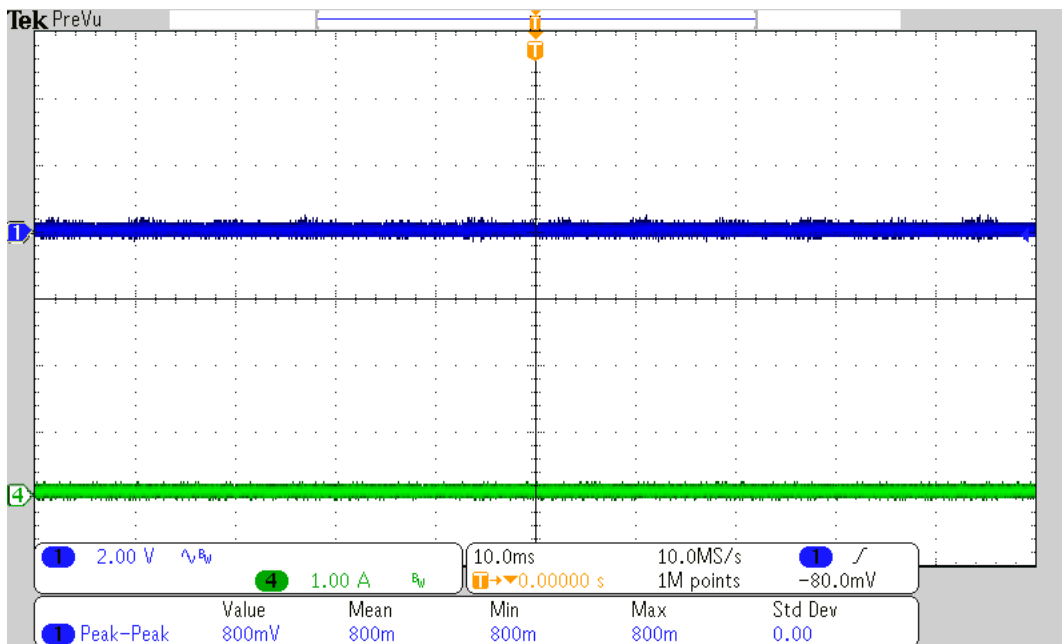
### 3.2.2 264V<sub>AC</sub>/50Hz- 390V<sub>2A</sub>



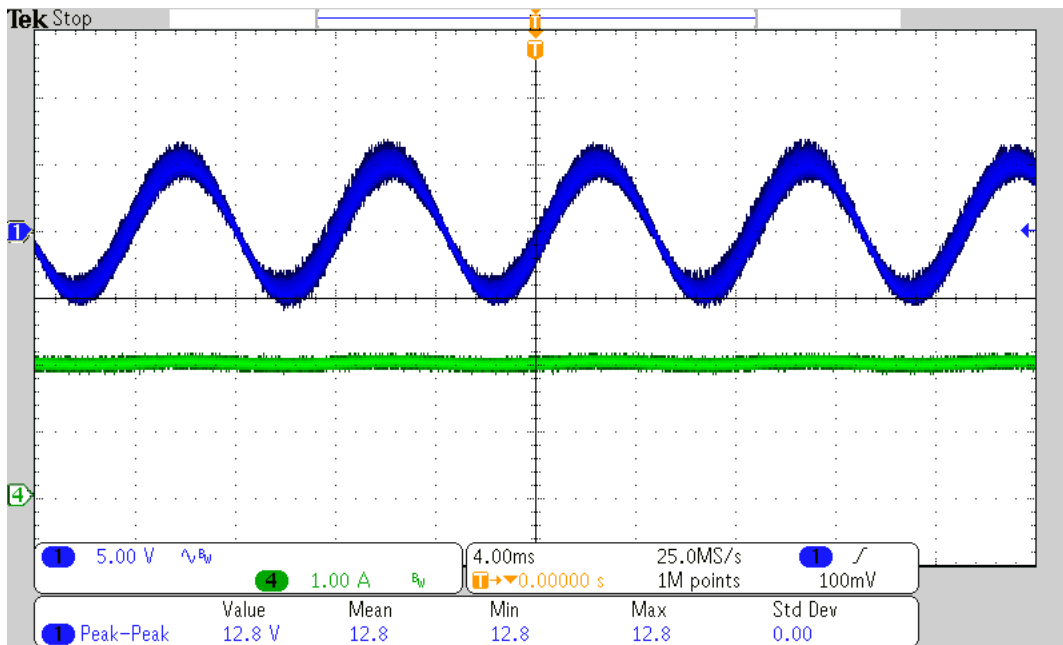
### 3.3 Output Voltage Ripple

The output voltage ripple are shown in the images below, where Channel 1 is the ripple voltage, Channel 4 is the output current.

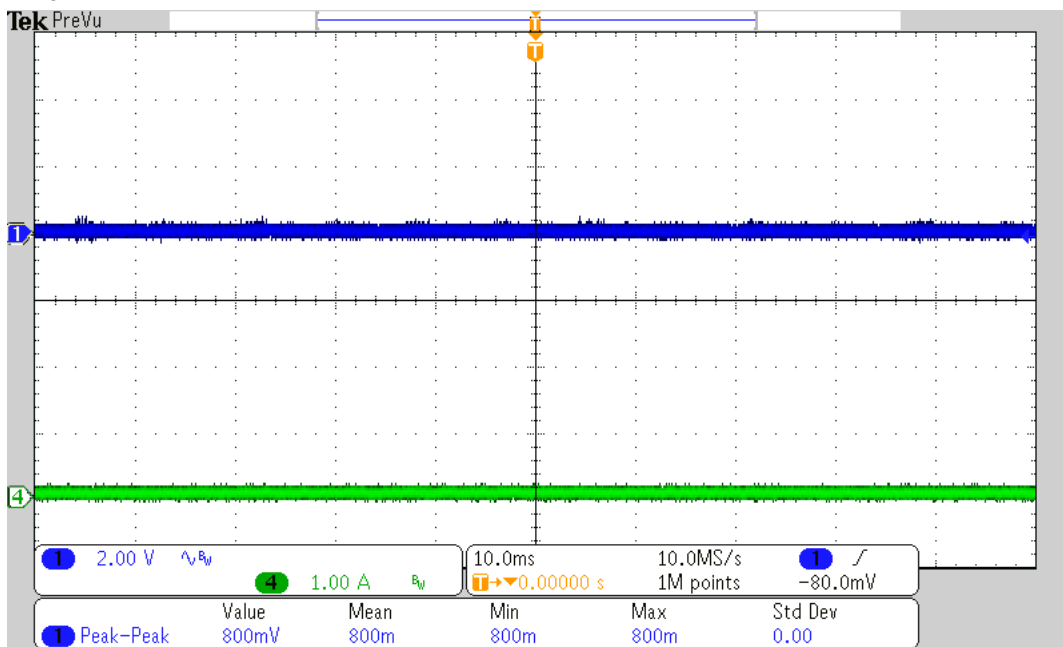
#### 3.3.1 90V<sub>AC</sub>/60Hz- No Load



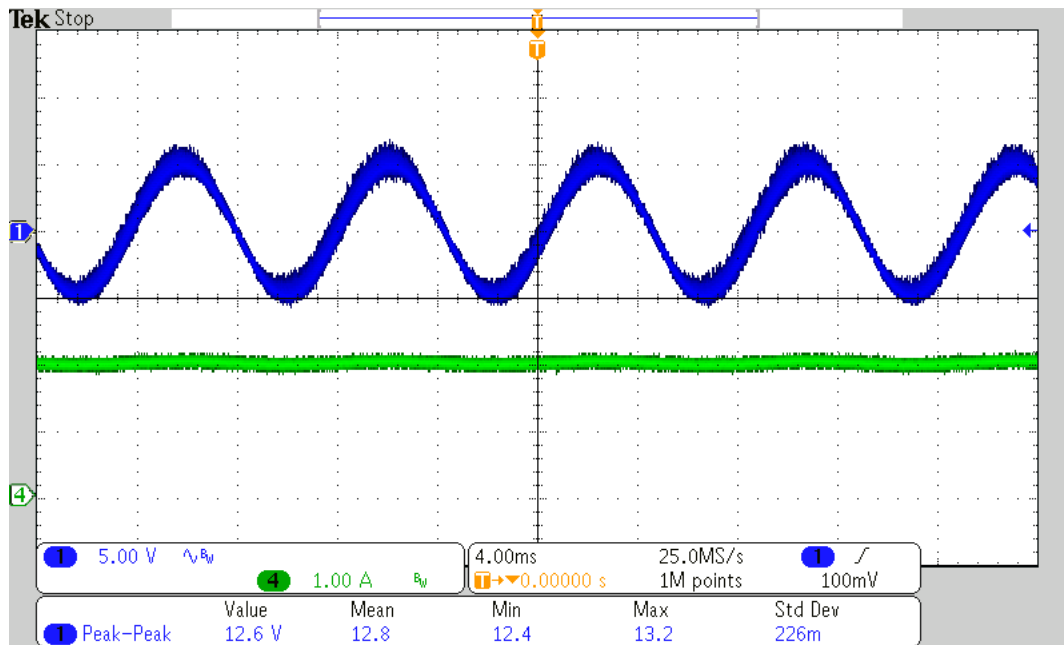
### 3.3.2 90V<sub>AC</sub>/60Hz- 390V2A



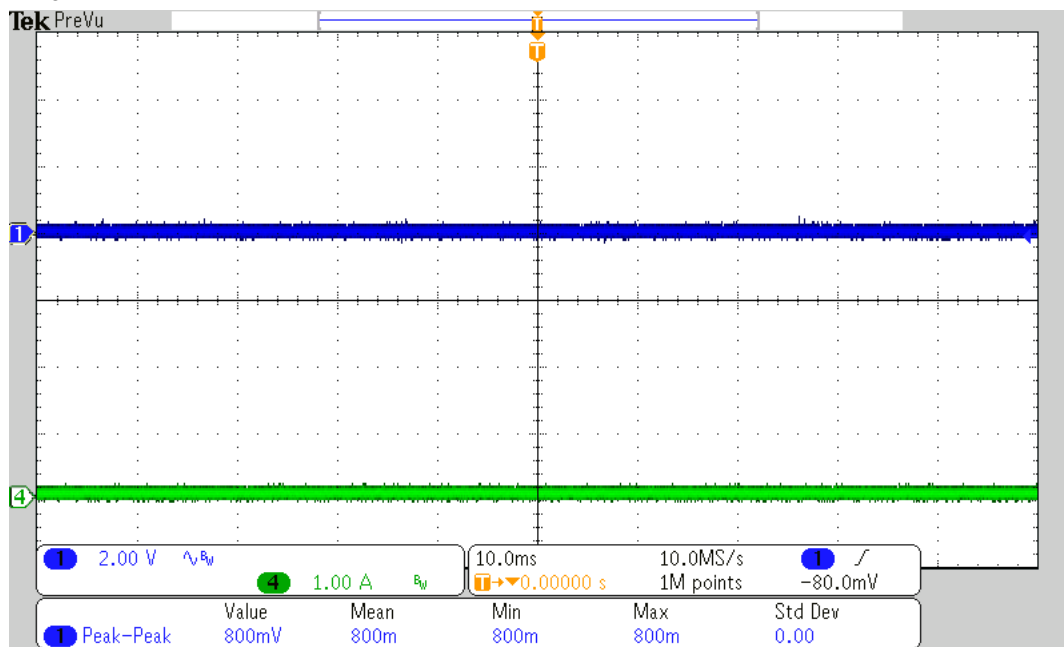
### 3.3.3 115V<sub>AC</sub>/60Hz- No Load



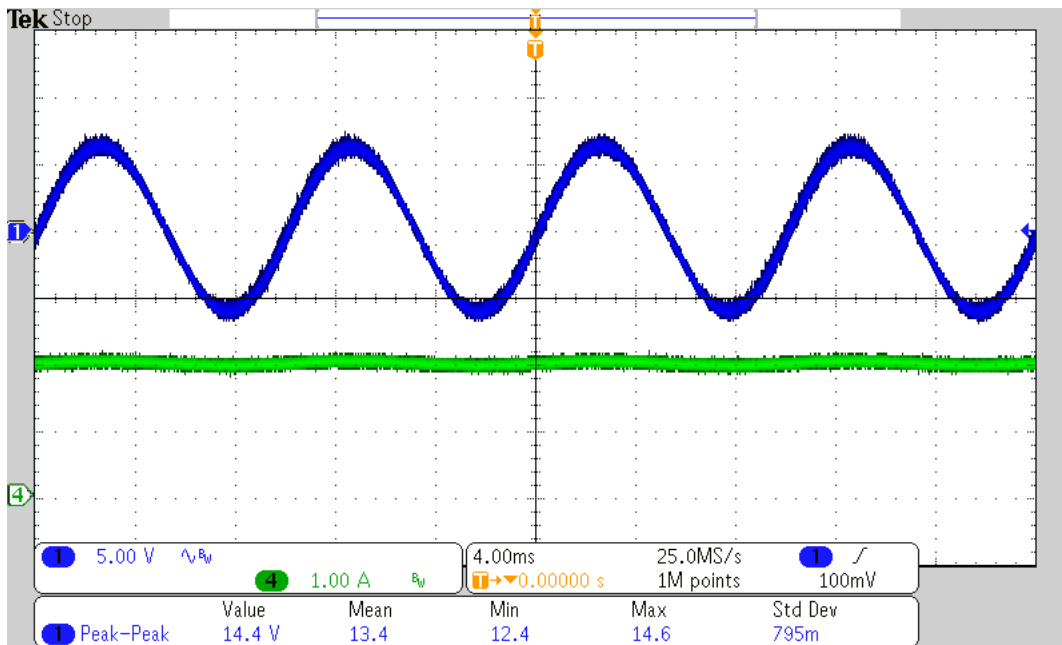
### 3.3.4 115V<sub>AC</sub>/60Hz- 390V2A



### 3.3.5 230V<sub>AC</sub>/50Hz- No Load



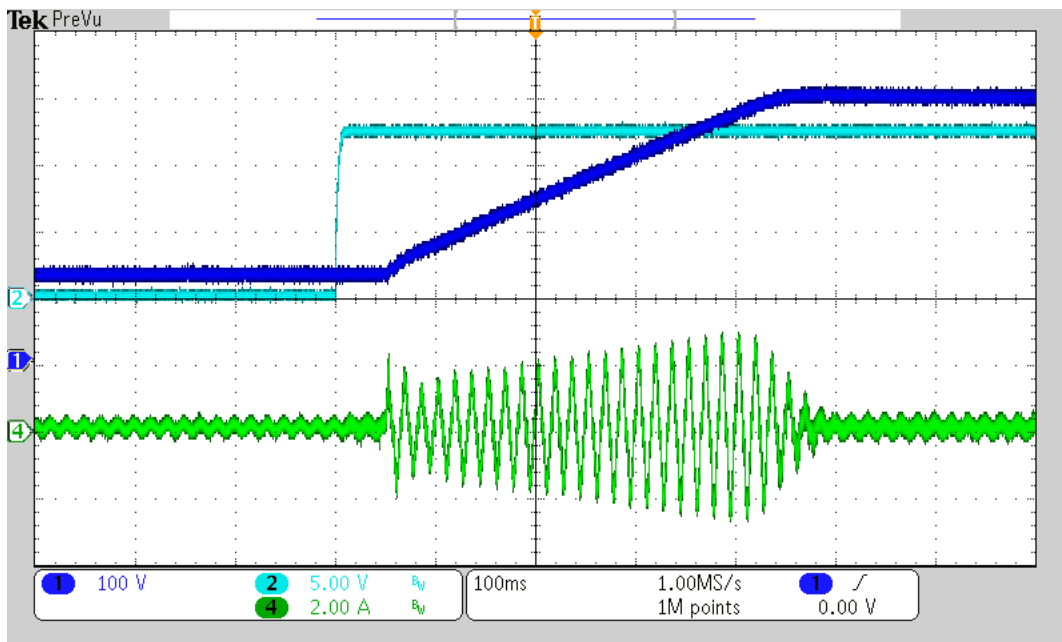
### 3.3.6 230V<sub>AC</sub>/50Hz- 390V2A



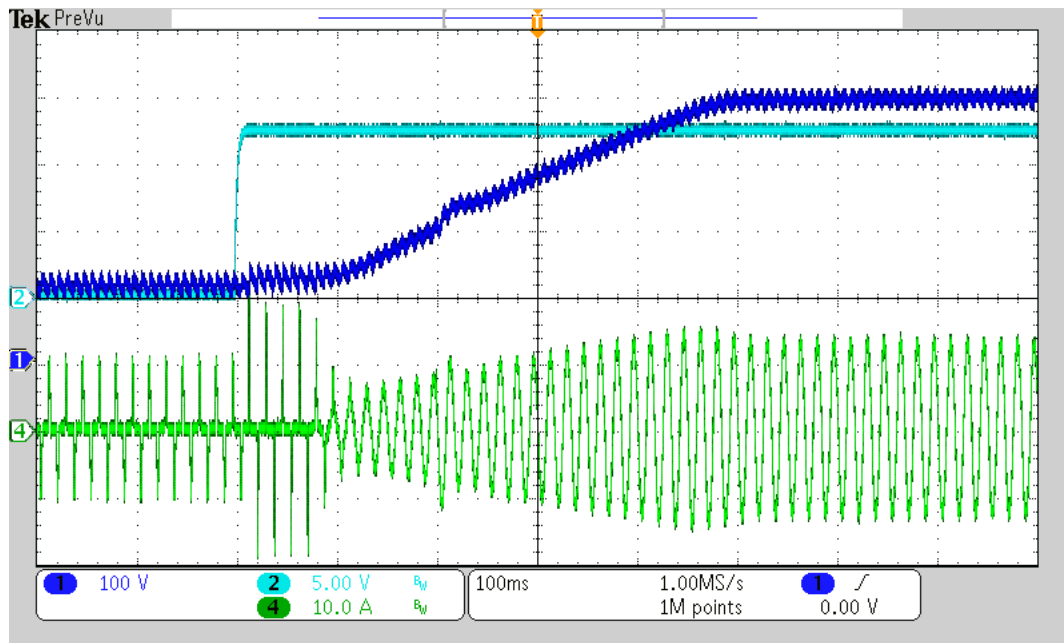
### 3.4 Start-up

The voltages of VCC Start-up are shown in the images below, where Channel 1 is the output voltage, Channel 2 is the VCC voltage, Channel 4 is the output current.

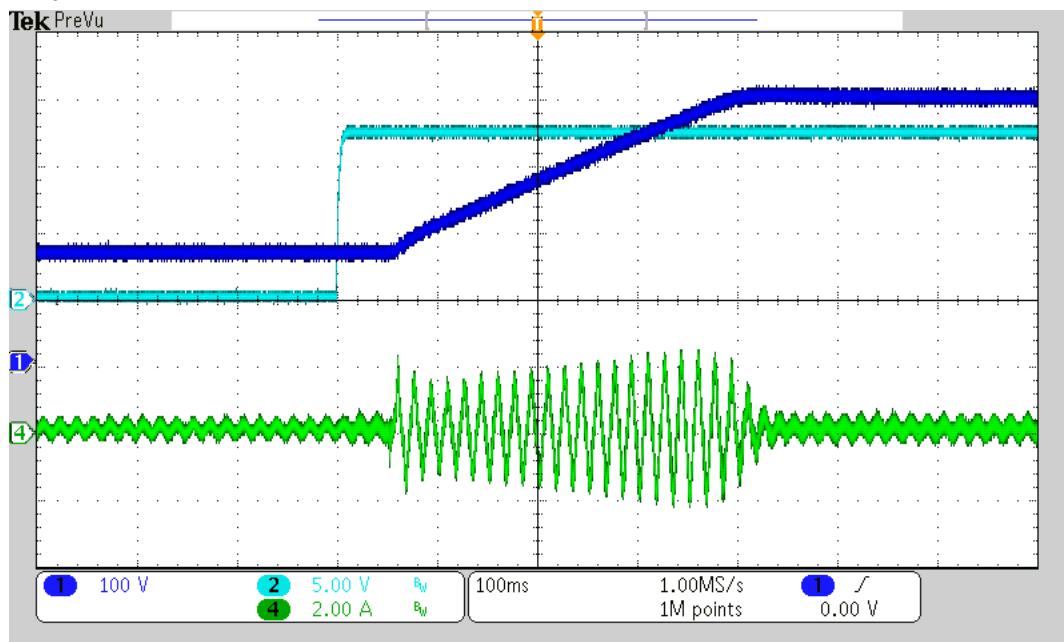
#### 3.4.1 90V<sub>AC</sub>/60Hz- No Load



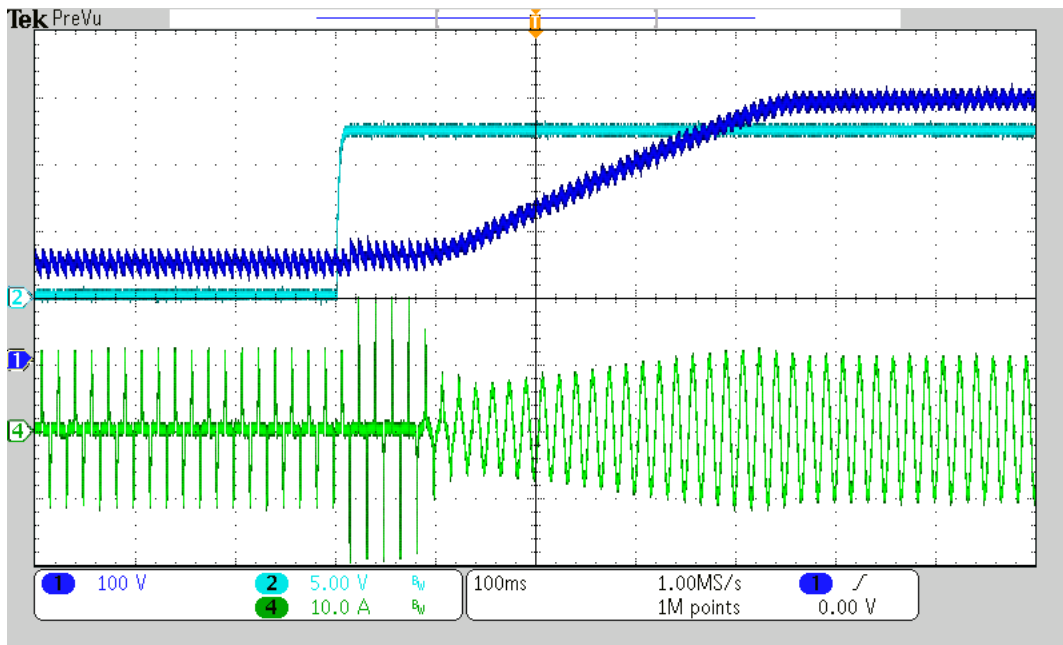
### 3.4.2 90V<sub>AC</sub>/60Hz- 390V2A



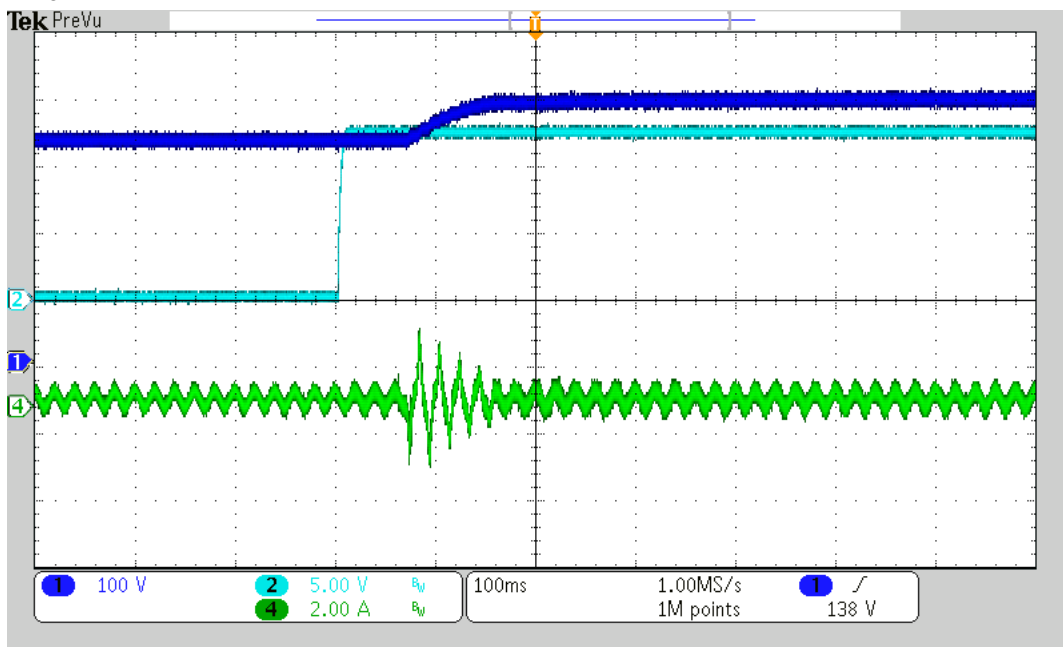
### 3.4.3 115V<sub>AC</sub>/60Hz- No Load



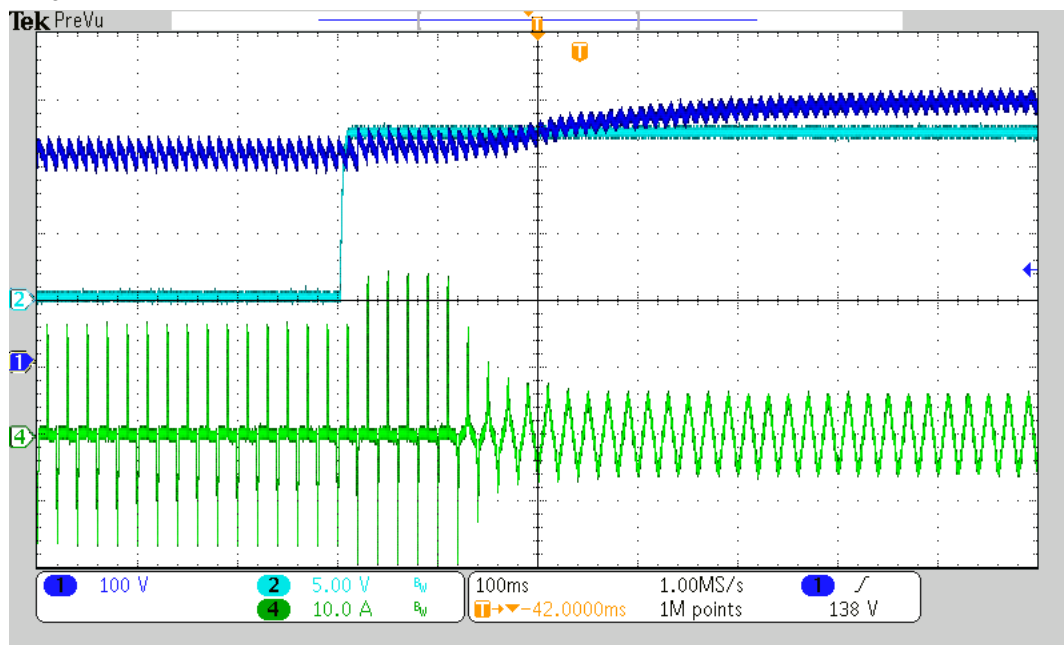
### 3.4.4 115V<sub>AC</sub>/60Hz- 390V2A



### 3.4.5 230V<sub>AC</sub>/50Hz- No Load



3.4.6 230V<sub>AC</sub>/50Hz- 390V2A





## IMPORTANT NOTICE AND DISCLAIMER

TI PROVIDES TECHNICAL AND RELIABILITY DATA (INCLUDING DATASHEETS), DESIGN RESOURCES (INCLUDING REFERENCE DESIGNS), APPLICATION OR OTHER DESIGN ADVICE, WEB TOOLS, SAFETY INFORMATION, AND OTHER RESOURCES "AS IS" AND WITH ALL FAULTS, AND DISCLAIMS ALL WARRANTIES, EXPRESS AND IMPLIED, INCLUDING WITHOUT LIMITATION ANY IMPLIED WARRANTIES OF MERCHANTABILITY, FITNESS FOR A PARTICULAR PURPOSE OR NON-INFRINGEMENT OF THIRD PARTY INTELLECTUAL PROPERTY RIGHTS.

These resources are intended for skilled developers designing with TI products. You are solely responsible for (1) selecting the appropriate TI products for your application, (2) designing, validating and testing your application, and (3) ensuring your application meets applicable standards, and any other safety, security, or other requirements. These resources are subject to change without notice. TI grants you permission to use these resources only for development of an application that uses the TI products described in the resource. Other reproduction and display of these resources is prohibited. No license is granted to any other TI intellectual property right or to any third party intellectual property right. TI disclaims responsibility for, and you will fully indemnify TI and its representatives against, any claims, damages, costs, losses, and liabilities arising out of your use of these resources.

TI's products are provided subject to TI's Terms of Sale (<https://www.ti.com/legal/termsofsale.html>) or other applicable terms available either on [ti.com](https://www.ti.com) or provided in conjunction with such TI products. TI's provision of these resources does not expand or otherwise alter TI's applicable warranties or warranty disclaimers for TI products.

Mailing Address: Texas Instruments, Post Office Box 655303, Dallas, Texas 75265  
Copyright © 2021, Texas Instruments Incorporated