



Systems ATE report

Model Name : PMP9135
Serial No : B

Interleaved xfmr .
8 Cancellation Turns

SystemTime : 2013/11/21
02:20:26 PM

Control IC: UCC28720

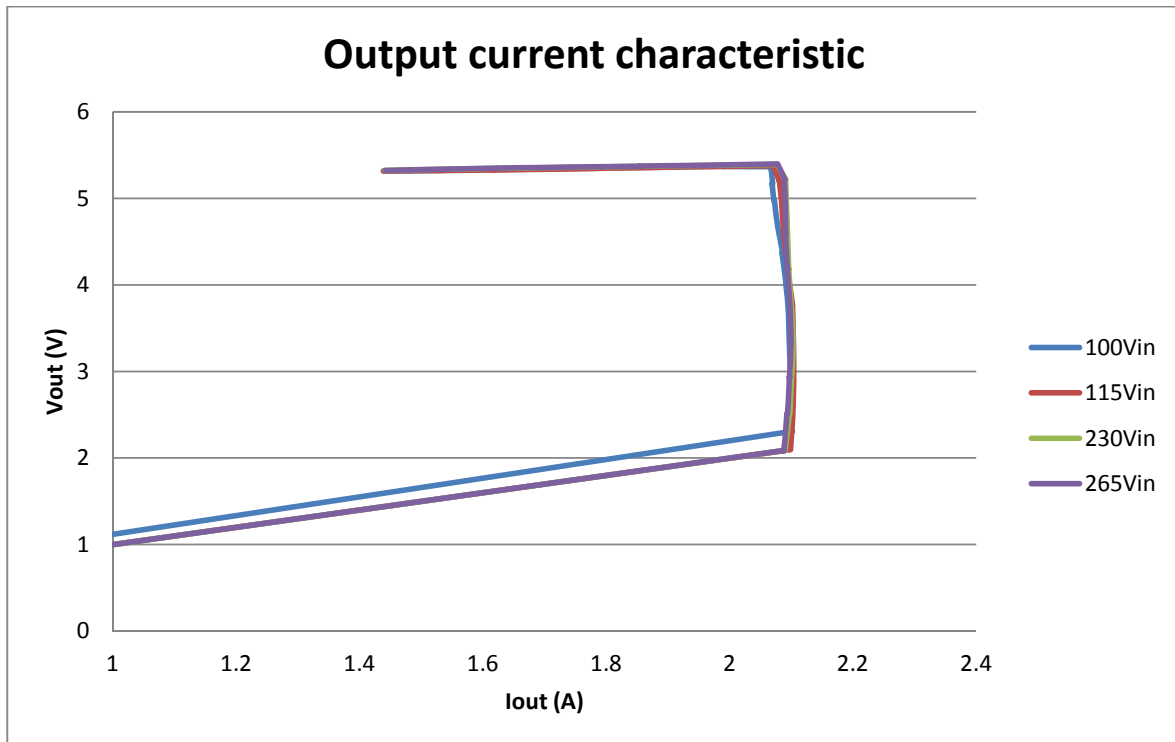
Average Efficiency Tests

Average Efficiency										
Vin(V)	F(Hz)	Pin(W)	Iout(A)	Vout(V)	Pout(W)	Eff(%)	PF	Measured Avg Eff (%)		
115	60	13.497	2.001	5.374	10.752	79.665	0.535	79.591		
		10.049	1.501	5.323	7.988	79.493	0.503			
		6.612	1.001	5.268	5.271	79.720	0.461			
		3.290	0.501	5.223	2.615	79.486	0.389			
230	50	13.362	2.001	5.396	10.796	80.799	0.410	80.475		
		9.949	1.501	5.342	8.017	80.581	0.380			
		6.556	1.001	5.285	5.289	80.679	0.344			
		3.279	0.501	5.229	2.618	79.839	0.320			

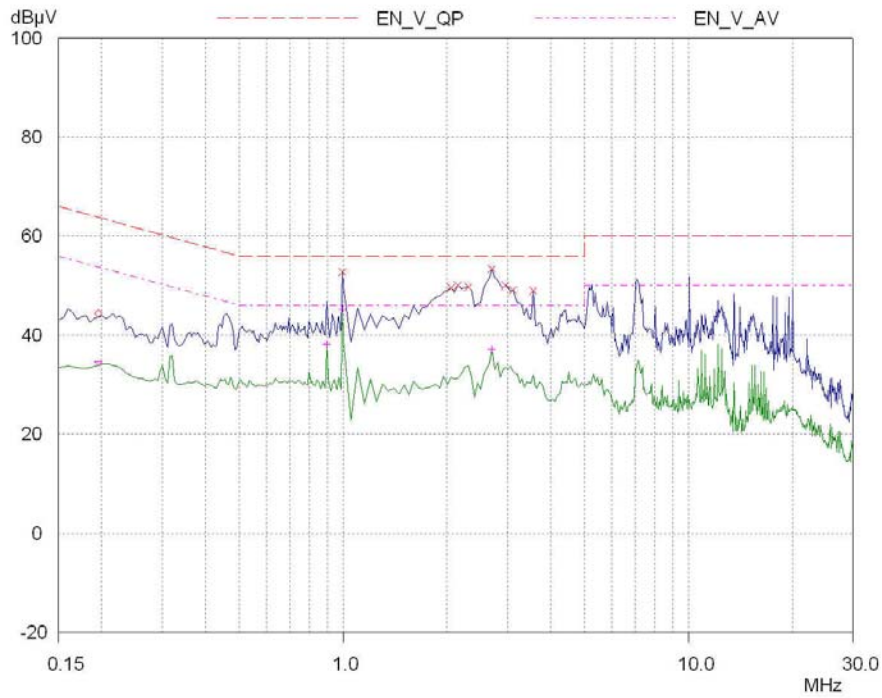
Output Current Characteristics

100Vin, Io	100Vin	115Vin, Io	115Vin	230Vin, Io	230Vin	265Vin, Io	265Vin
1.439	5.317	1.439	5.317	1.441	5.323	1.442	5.325
1.480	5.320	1.480	5.321	1.483	5.331	1.483	5.330
1.480	5.319	1.480	5.321	1.483	5.331	1.483	5.330
1.480	5.319	1.480	5.320	1.483	5.330	1.483	5.330
1.523	5.322	1.523	5.323	1.527	5.337	1.527	5.336
1.523	5.322	1.523	5.323	1.527	5.337	1.527	5.336
1.569	5.326	1.569	5.327	1.574	5.343	1.574	5.345
1.569	5.326	1.569	5.326	1.574	5.343	1.574	5.345
1.569	5.325	1.569	5.326	1.574	5.343	1.574	5.345
1.618	5.331	1.618	5.330	1.623	5.348	1.624	5.350
1.618	5.330	1.617	5.330	1.623	5.348	1.624	5.350
1.618	5.331	1.618	5.330	1.623	5.348	1.624	5.351
1.670	5.337	1.669	5.334	1.676	5.353	1.676	5.357
1.670	5.337	1.669	5.334	1.675	5.353	1.676	5.356
1.726	5.344	1.725	5.340	1.731	5.359	1.732	5.362
1.726	5.344	1.725	5.340	1.731	5.359	1.732	5.362
1.726	5.344	1.725	5.340	1.731	5.359	1.732	5.362
1.786	5.350	1.785	5.347	1.791	5.364	1.791	5.367
1.786	5.353	1.785	5.347	1.791	5.364	1.792	5.369
1.786	5.351	1.785	5.348	1.791	5.364	1.792	5.367
1.850	5.357	1.849	5.355	1.855	5.371	1.855	5.373
1.850	5.357	1.850	5.355	1.855	5.371	1.855	5.374
1.918	5.364	1.918	5.363	1.924	5.379	1.924	5.381
1.918	5.363	1.918	5.364	1.924	5.379	1.924	5.381
1.918	5.365	1.918	5.364	1.924	5.379	1.924	5.380
1.991	5.370	1.991	5.372	1.997	5.386	1.998	5.389
1.991	5.369	1.991	5.372	1.997	5.386	1.998	5.389
1.991	5.370	1.991	5.371	1.997	5.386	1.998	5.390
2.067	5.366	2.071	5.379	2.077	5.393	2.078	5.398
2.067	5.368	2.071	5.378	2.077	5.394	2.078	5.398
2.070	5.170	2.081	5.198	2.091	5.221	2.090	5.218
2.069	5.169	2.081	5.198	2.091	5.222	2.089	5.218
2.069	5.170	2.081	5.199	2.091	5.222	2.089	5.218
2.072	4.970	2.084	4.997	2.092	5.015	2.090	5.010
2.072	4.970	2.084	4.996	2.092	5.015	2.090	5.011
2.073	4.970	2.084	4.996	2.092	5.016	2.090	5.011
2.076	4.770	2.086	4.793	2.093	4.809	2.091	4.804
2.076	4.770	2.086	4.793	2.093	4.809	2.091	4.804
2.076	4.770	2.086	4.793	2.093	4.809	2.091	4.804
2.081	4.572	2.088	4.590	2.094	4.602	2.091	4.595
2.081	4.573	2.088	4.590	2.094	4.602	2.091	4.596
2.086	4.375	2.091	4.387	2.095	4.396	2.092	4.390
2.086	4.376	2.091	4.386	2.095	4.395	2.092	4.389
2.085	4.375	2.091	4.386	2.095	4.395	2.092	4.389
2.089	4.175	2.095	4.185	2.096	4.188	2.094	4.184
2.089	4.175	2.095	4.185	2.096	4.189	2.094	4.183
2.089	4.175	2.094	4.185	2.096	4.188	2.094	4.184
2.092	3.972	2.098	3.983	2.098	3.983	2.096	3.979
2.092	3.971	2.098	3.983	2.098	3.983	2.096	3.978
2.095	3.766	2.102	3.779	2.100	3.776	2.098	3.773

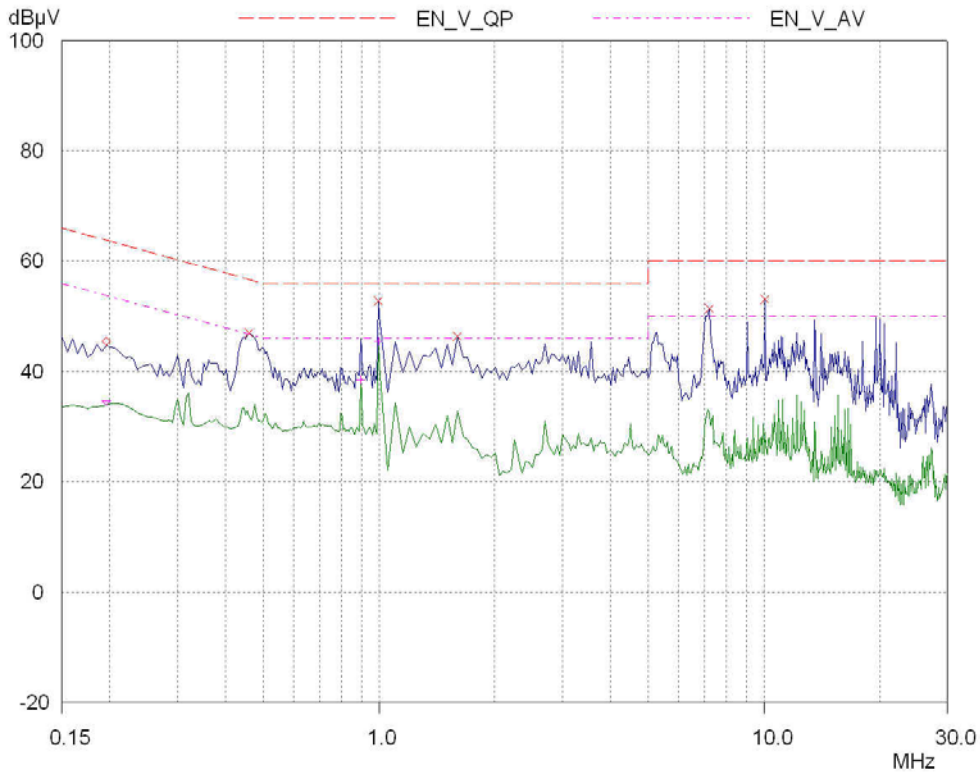
2.095	3.766	2.101	3.779	2.100	3.776	2.098	3.773
2.095	3.766	2.102	3.779	2.100	3.776	2.098	3.772
2.096	3.561	2.103	3.572	2.102	3.569	2.099	3.566
2.096	3.560	2.103	3.572	2.102	3.570	2.099	3.566
2.096	3.560	2.103	3.572	2.102	3.570	2.099	3.565
2.097	3.353	2.104	3.363	2.103	3.361	2.100	3.356
2.097	3.352	2.104	3.363	2.103	3.361	2.100	3.356
2.098	3.144	2.104	3.154	2.103	3.151	2.099	3.145
2.098	3.144	2.104	3.153	2.103	3.151	2.099	3.145
2.098	3.144	2.104	3.153	2.103	3.151	2.099	3.145
2.099	2.935	2.104	2.943	2.101	2.939	2.097	2.933
2.099	2.935	2.104	2.943	2.101	2.939	2.098	2.934
2.099	2.935	2.104	2.943	2.101	2.939	2.097	2.934
2.099	2.726	2.104	2.733	2.099	2.727	2.096	2.722
2.099	2.726	2.104	2.732	2.099	2.727	2.096	2.722
2.098	2.516	2.103	2.521	2.098	2.514	2.094	2.510
2.098	2.516	2.103	2.521	2.097	2.514	2.094	2.510
2.098	2.516	2.103	2.521	2.097	2.514	2.093	2.510
2.097	2.305	2.101	2.309	2.094	2.302	2.091	2.298
2.097	2.305	2.102	2.309	2.094	2.302	2.091	2.298
2.098	2.305	2.101	2.309	2.094	2.302	2.091	2.298
0.001	0.038	2.099	2.097	2.090	2.088	2.088	2.086
0.001	0.035	2.099	2.097	2.090	2.089	2.087	2.086
0.001	0.038	2.099	2.097	2.090	2.088	2.088	2.086
0.000	0.000	0.000	0.000	0.000	0.000	0.000	0.000



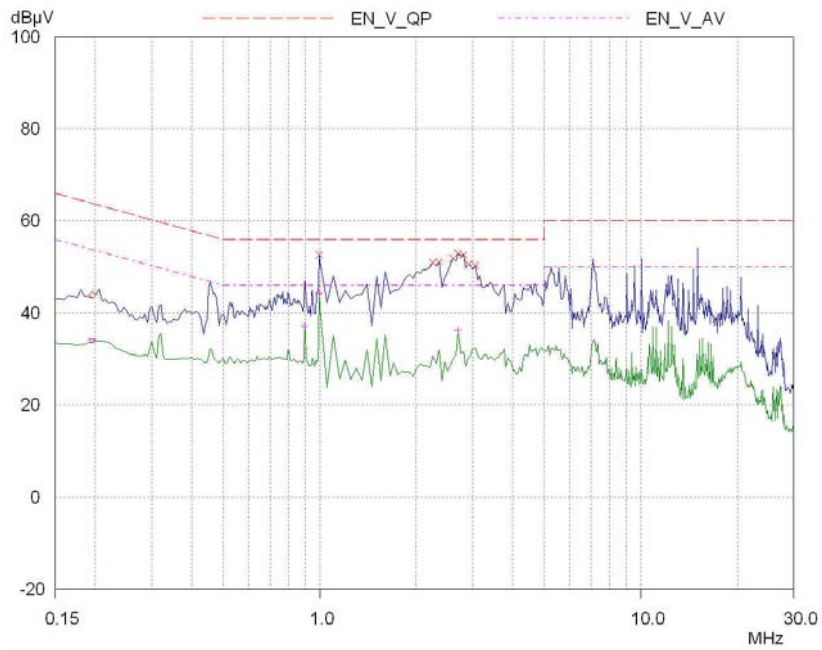
115V with load grounded



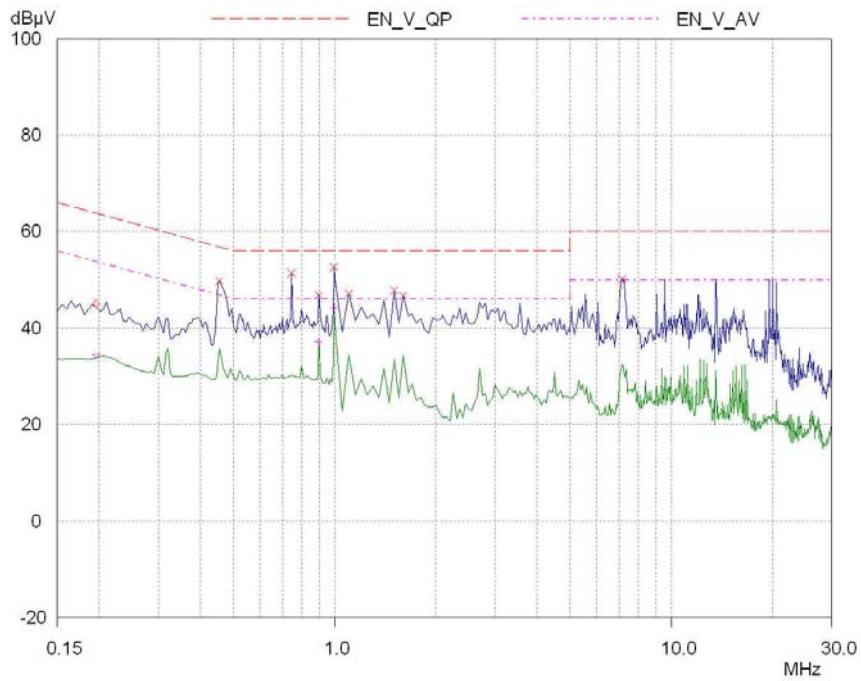
115V with load ungrounded



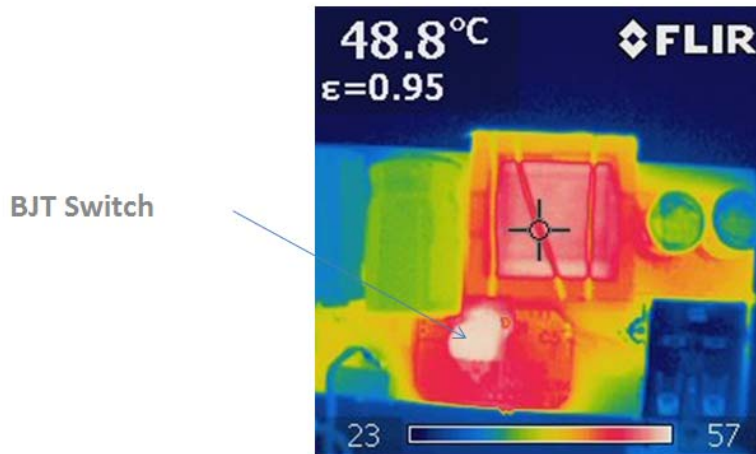
230V with load grounded



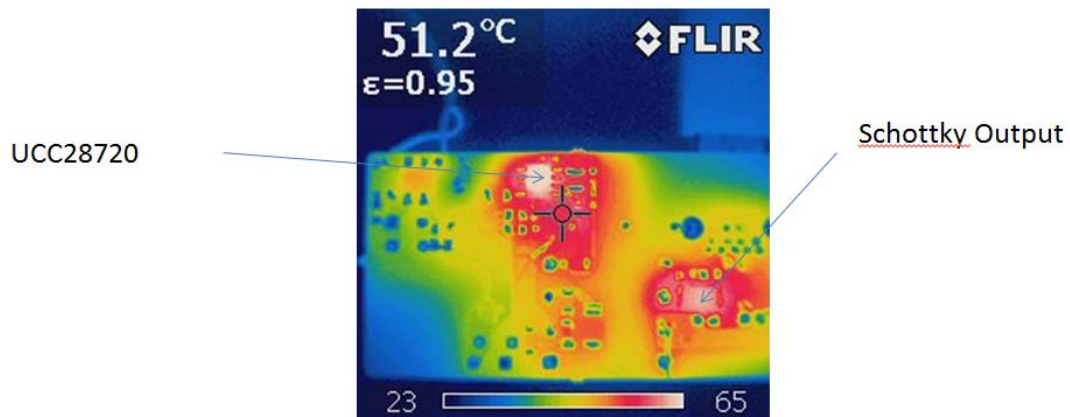
230V with load ungrounded



Top Side Thermals



Bottom Side Thermals



IMPORTANT NOTICE AND DISCLAIMER

TI PROVIDES TECHNICAL AND RELIABILITY DATA (INCLUDING DATASHEETS), DESIGN RESOURCES (INCLUDING REFERENCE DESIGNS), APPLICATION OR OTHER DESIGN ADVICE, WEB TOOLS, SAFETY INFORMATION, AND OTHER RESOURCES "AS IS" AND WITH ALL FAULTS, AND DISCLAIMS ALL WARRANTIES, EXPRESS AND IMPLIED, INCLUDING WITHOUT LIMITATION ANY IMPLIED WARRANTIES OF MERCHANTABILITY, FITNESS FOR A PARTICULAR PURPOSE OR NON-INFRINGEMENT OF THIRD PARTY INTELLECTUAL PROPERTY RIGHTS.

These resources are intended for skilled developers designing with TI products. You are solely responsible for (1) selecting the appropriate TI products for your application, (2) designing, validating and testing your application, and (3) ensuring your application meets applicable standards, and any other safety, security, or other requirements. These resources are subject to change without notice. TI grants you permission to use these resources only for development of an application that uses the TI products described in the resource. Other reproduction and display of these resources is prohibited. No license is granted to any other TI intellectual property right or to any third party intellectual property right. TI disclaims responsibility for, and you will fully indemnify TI and its representatives against, any claims, damages, costs, losses, and liabilities arising out of your use of these resources.

TI's products are provided subject to TI's Terms of Sale (<https://www.ti.com/legal/termsofsale.html>) or other applicable terms available either on [ti.com](https://www.ti.com) or provided in conjunction with such TI products. TI's provision of these resources does not expand or otherwise alter TI's applicable warranties or warranty disclaimers for TI products.

Mailing Address: Texas Instruments, Post Office Box 655303, Dallas, Texas 75265
Copyright © 2021, Texas Instruments Incorporated