



Texas Instruments

PMP4428 Test Procedure

China Power Reference Design

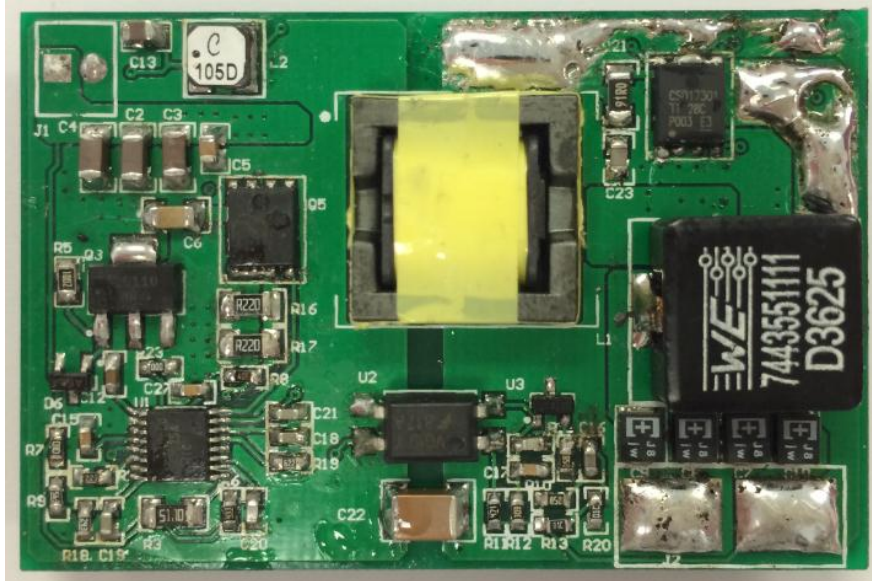
REV A

05/06/2014

1 GENERAL

1.1 PURPOSE

To provide detailed data for evaluating and verifying the PMP4428, which uses TI active clamp forward LM5025A, with size 40mmx60mmx8mm. The below photo shows this demo board.



1.2 REFERENCE DOCUMENTATION

Schematic PMP4428_SCH.PDF
Assembly PMP4428_PCB.PDF
BOM
Promotion tools

1.3 TEST EQUIPMENTS

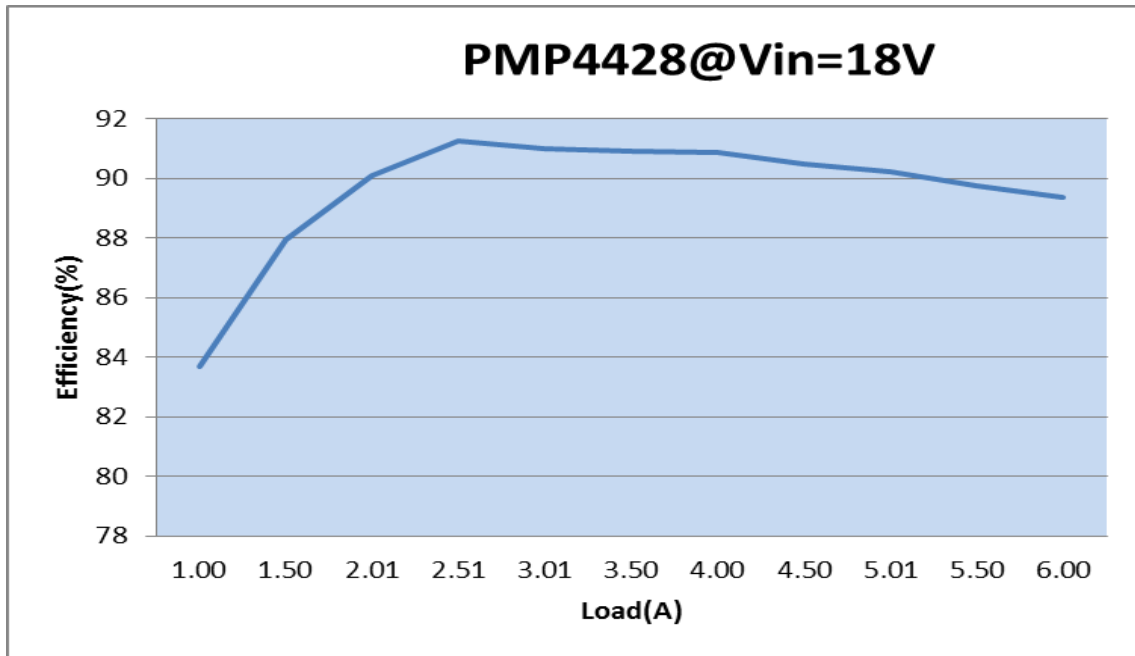
Multi-meter(voltage): Fluke 178
DC Source: GWINSTEK GPS-3303C
Electronic load: Chroma 63103A module
Testing Demo Board

2 INPUT CHARACTERISTICS

2.1 EFFICIENCY DATA

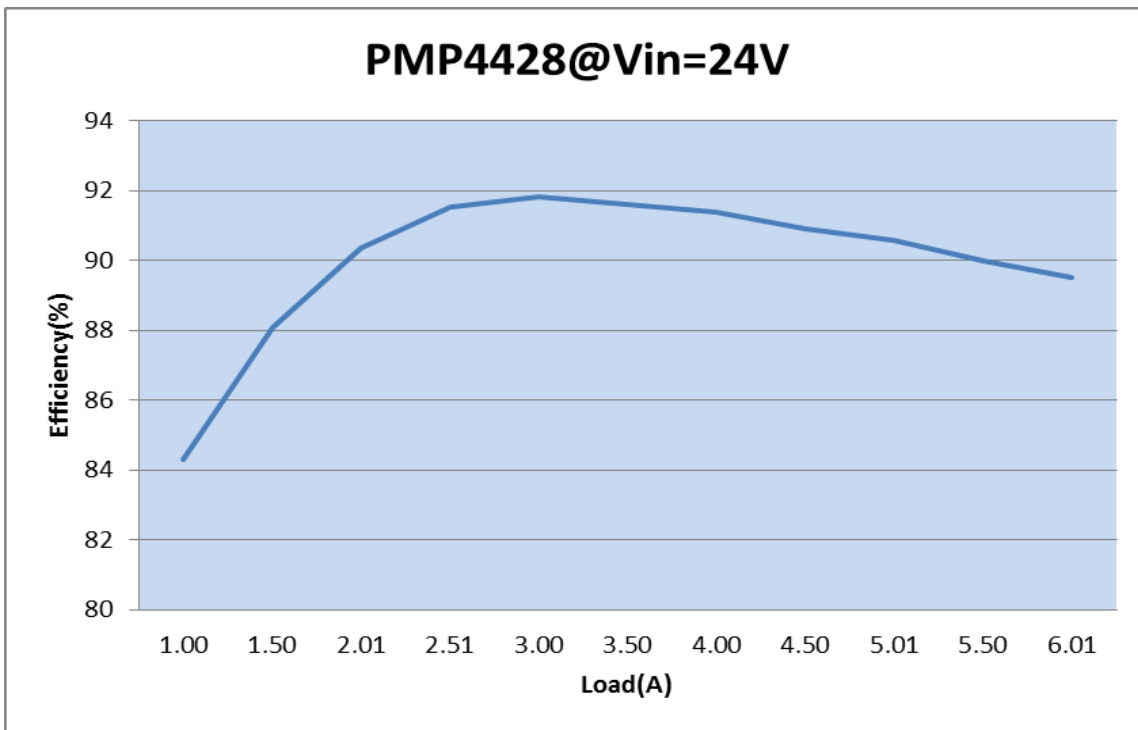
Vin=18V

Vin	Iin	Vout	Iout	Efficiency
18.05	0.331	5.00	1.00	83.69%
18.03	0.473	5.00	1.50	87.94%
17.99	0.620	5.00	2.01	90.10%
17.98	0.765	5.00	2.51	91.24%
18.04	0.917	5.00	3.01	90.98%
18.02	1.068	5.00	3.50	90.93%
18.04	1.220	4.00	4.00	9.087%
18.01	1.381	5.00	4.50	90.46%
17.98	1.544	5.00	5.01	90.23%
17.99	1.703	5.00	5.50	89.76%
18.04	1.856	5.00	6.00	89.35%



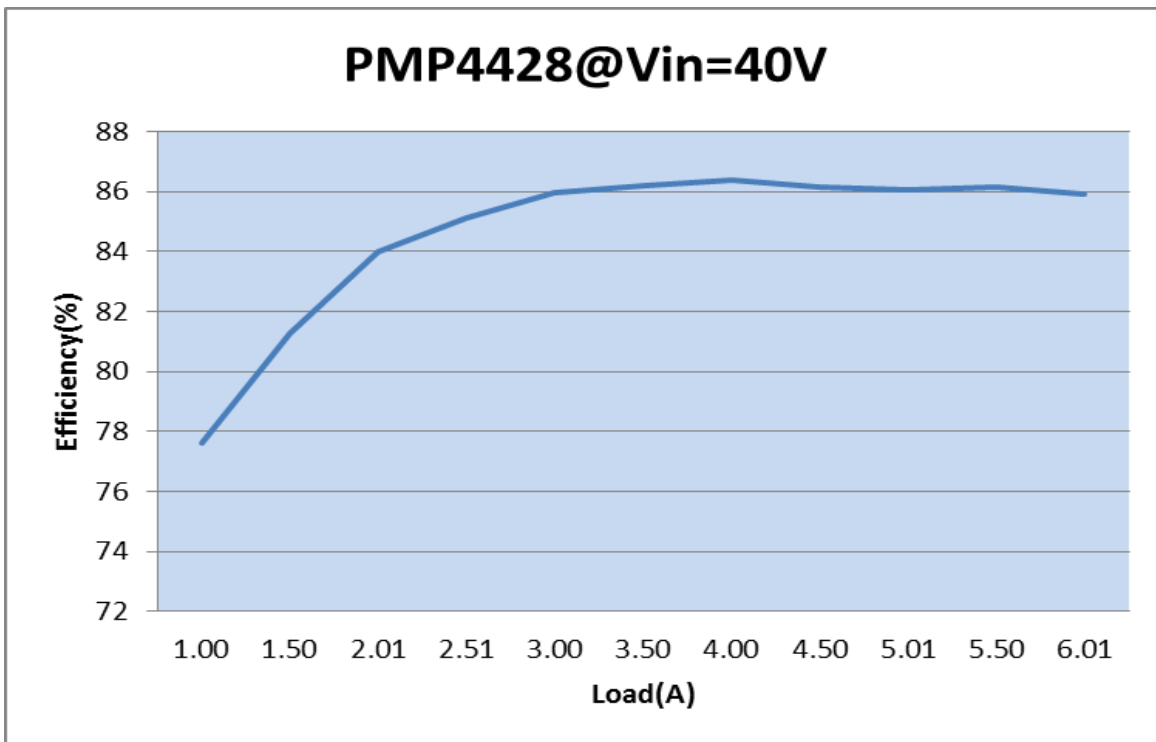
Vin=24V

Vin	Iin	Vout	Iout	Efficiency
24.01	0.247	5.00	1.00	84.31%
23.99	0.355	5.00	1.50	88.06%
24.02	0.463	5.00	2.01	90.37%
24.01	0.571	5.00	2.51	91.54%
23.99	0.681	5.00	3.00	91.82%
23.97	0.797	5.00	3.50	91.60%
24.02	0.911	5.00	4.00	91.39%
24.01	1.031	5.00	4.50	90.89%
23.99	1.153	5.00	5.01	90.56%
23.97	1.275	5.00	5.50	89.98%
24.01	1.398	5.00	6.01	89.53%

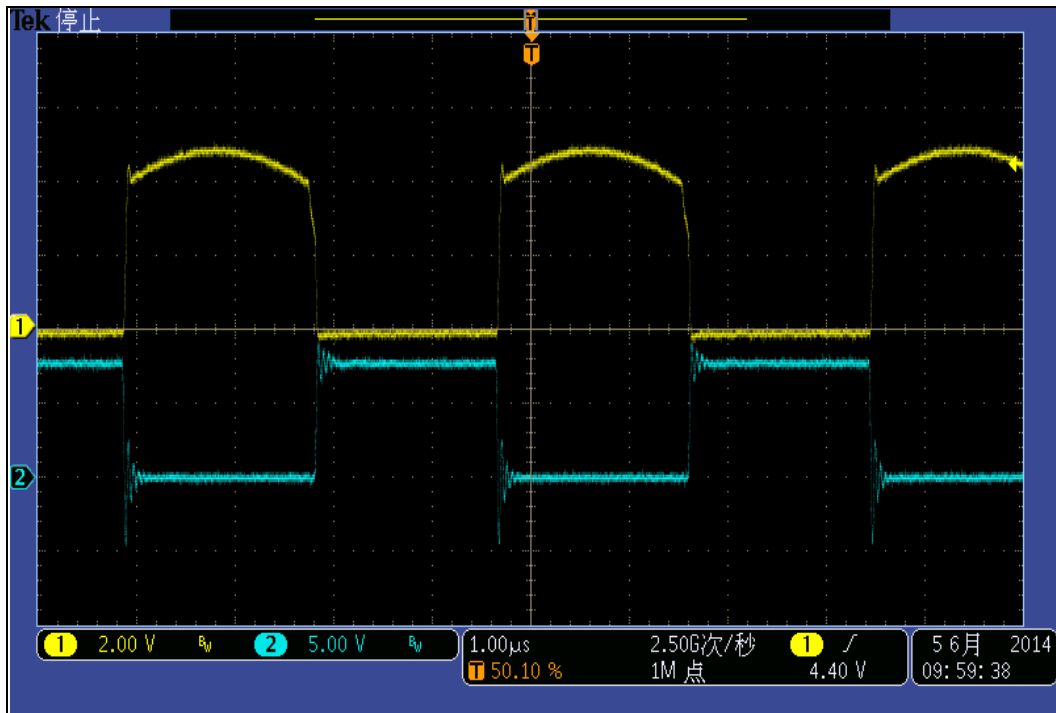


Vin=40V

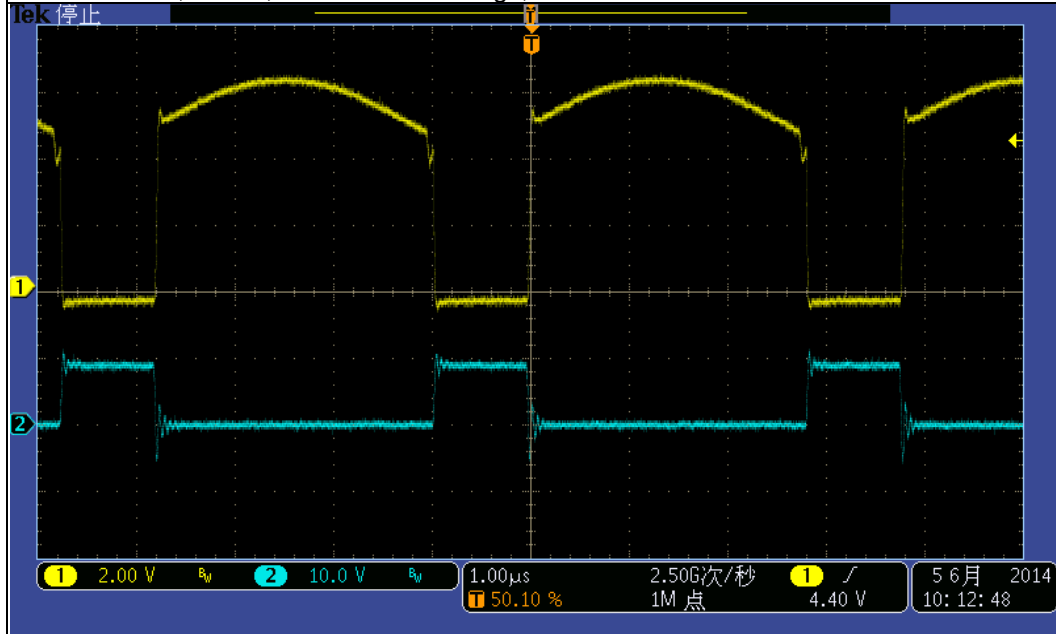
Vin	Iin	Vout	Iout	Efficiency
40.00	0.161	5.00	1.00	77.64%
39.95	0.231	5.00	1.50	81.27%
40.00	0.299	5.00	2.01	84.03%
39.96	0.369	5.00	2.51	85.11%
40.00	0.436	5.00	3.00	86.01%
39.97	0.508	5.00	3.50	86.19%
39.90	0.581	5.00	4.00	86.42%
39.94	0.654	5.00	4.50	86.14%
39.90	0.729	5.00	5.01	86.12%
39.96	0.799	5.00	5.50	86.13%
39.90	0.875	5.00	6.01	86.07%



3 Key waveform: 3.1 Main MOSFET Vds VS Vgs

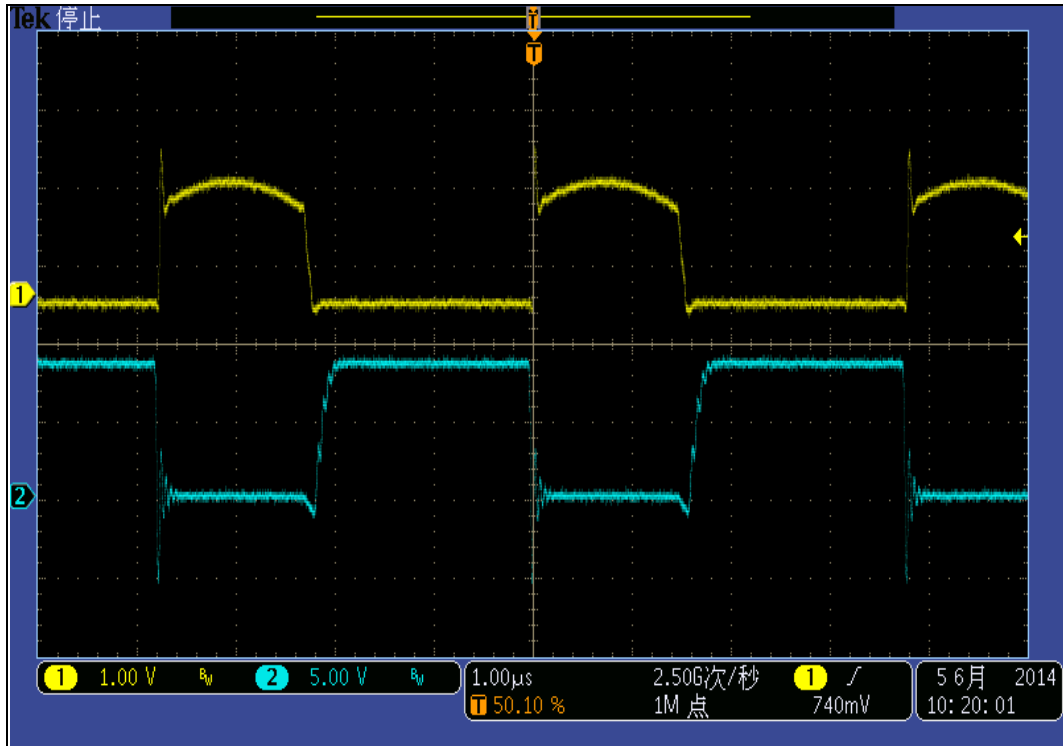


Vin:18Vdc Io: 6A
Ch1: Vmains, 2V/div; Ch2: Vmaings, 5V/div

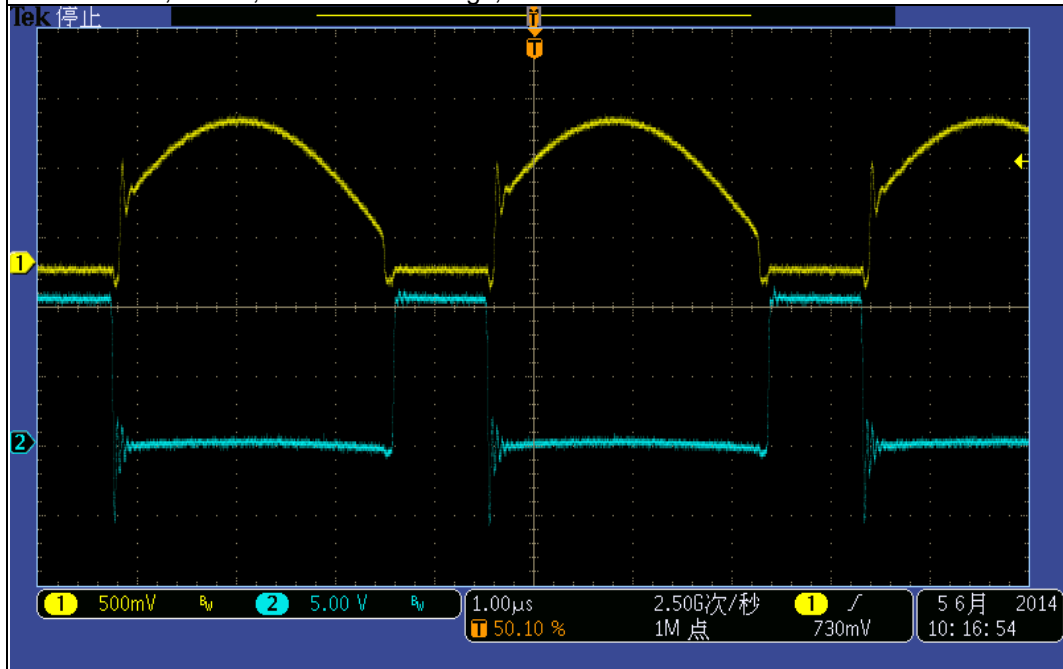


Vin:40Vdc Io: 6A
Ch1: Vmains, 2V/div; Ch2: Vmaings, 5V/div

3.2 Secondary Rectifier MOSFET Vds VS Vgs

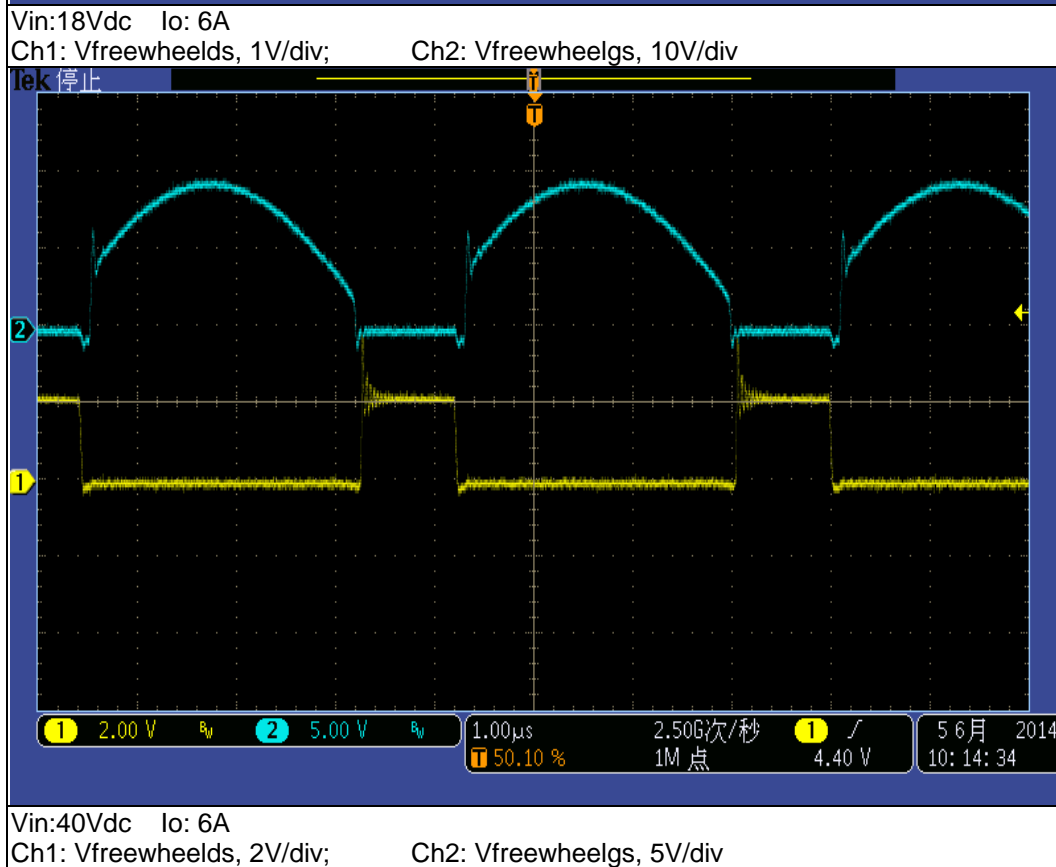
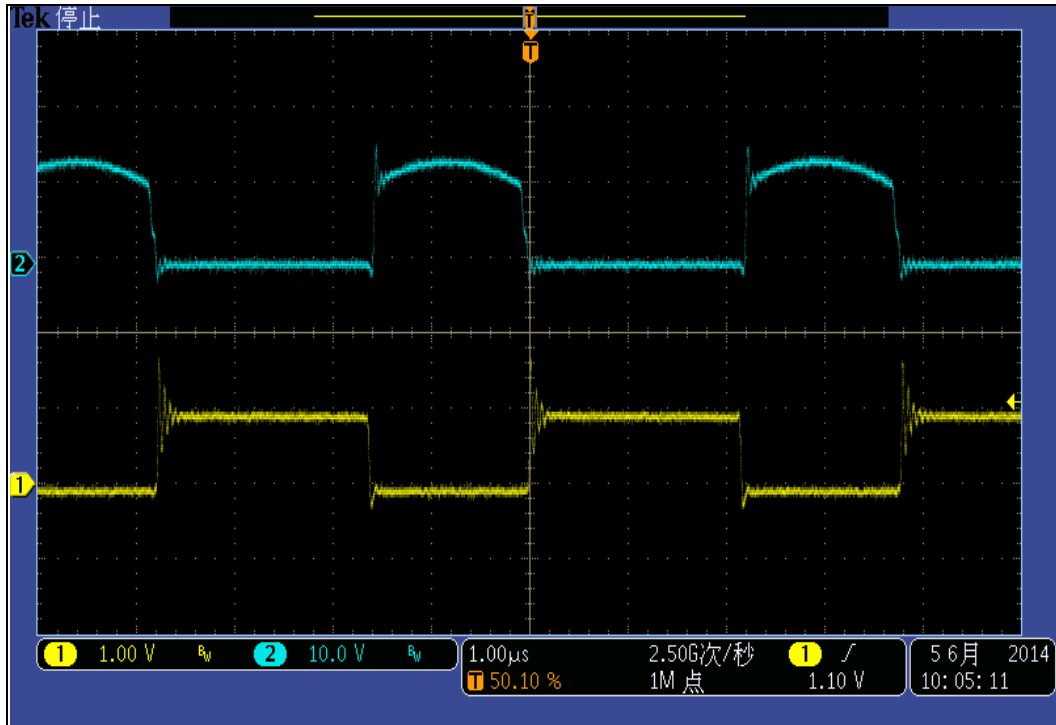


Vin:18Vdc Io: 6A
Ch1: Vrectds, 1V/div; Ch2: Vrectgs, 5V/div

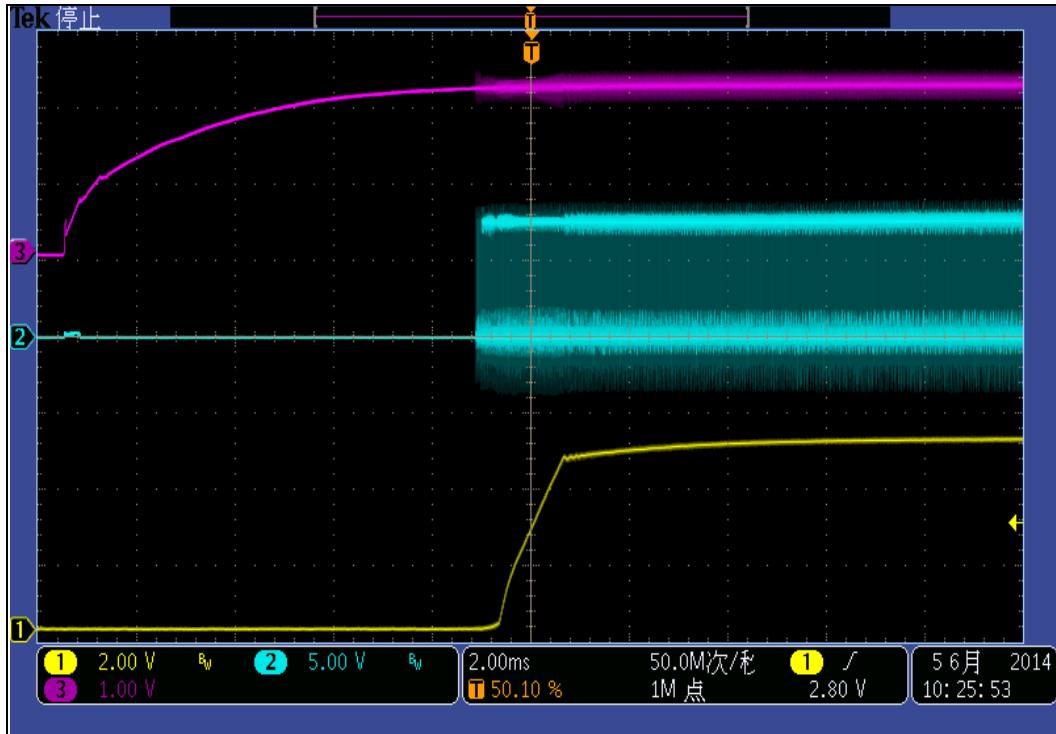


Vin:40Vdc Io: 6A
Ch1: Vrectds, 500mV/div; Ch2: Vrectgs, 5V/div

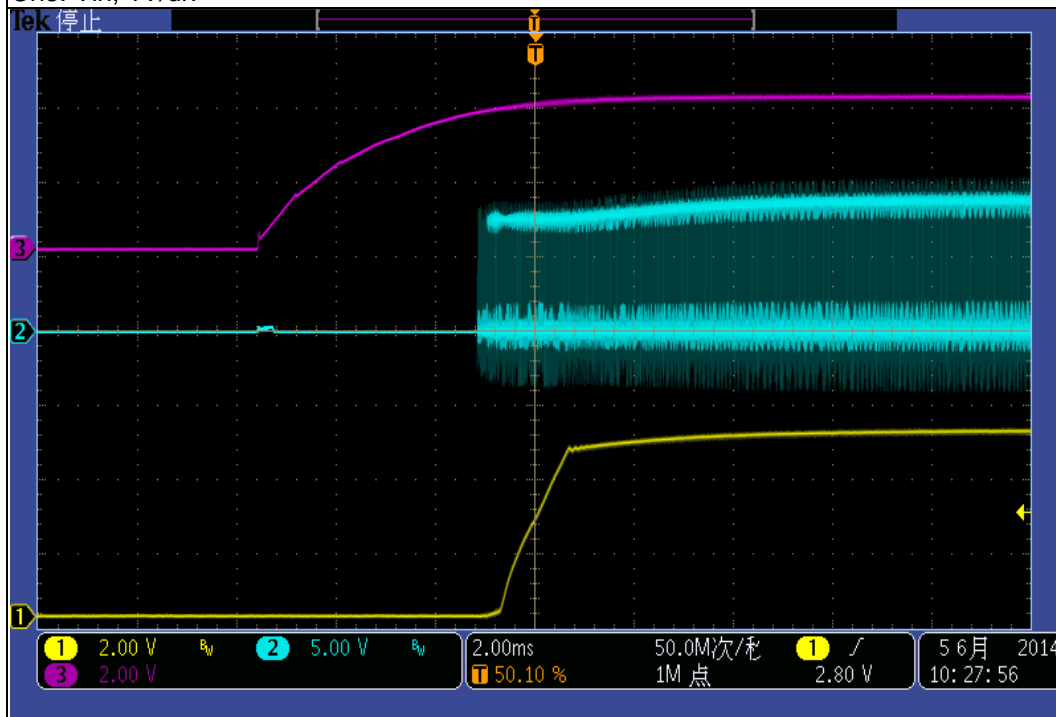
3.3 Secondary Freewheel MOSFET Vds VS Vgs



3.4 OUTPUT VOLTAGE RISE TIME

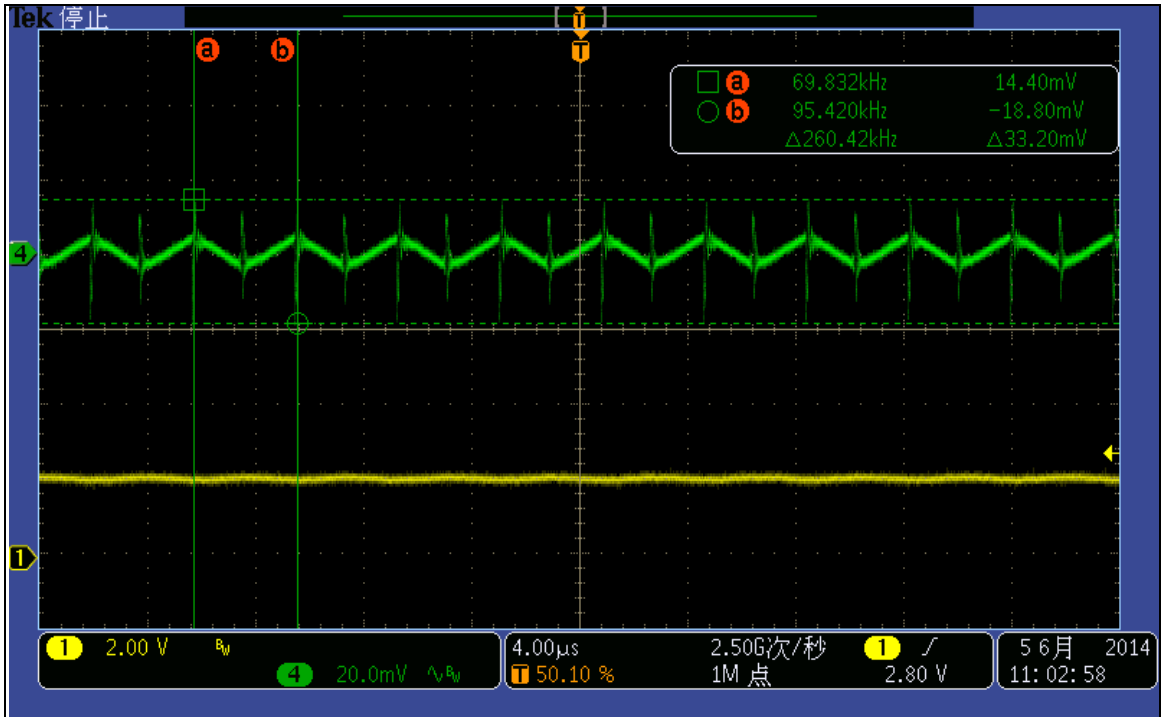


Vin:18Vdc Io: 6A
Ch1: Vout, 2V/div; Ch2: Vmaings, 2V/div
Ch3: Vin, 1V/div

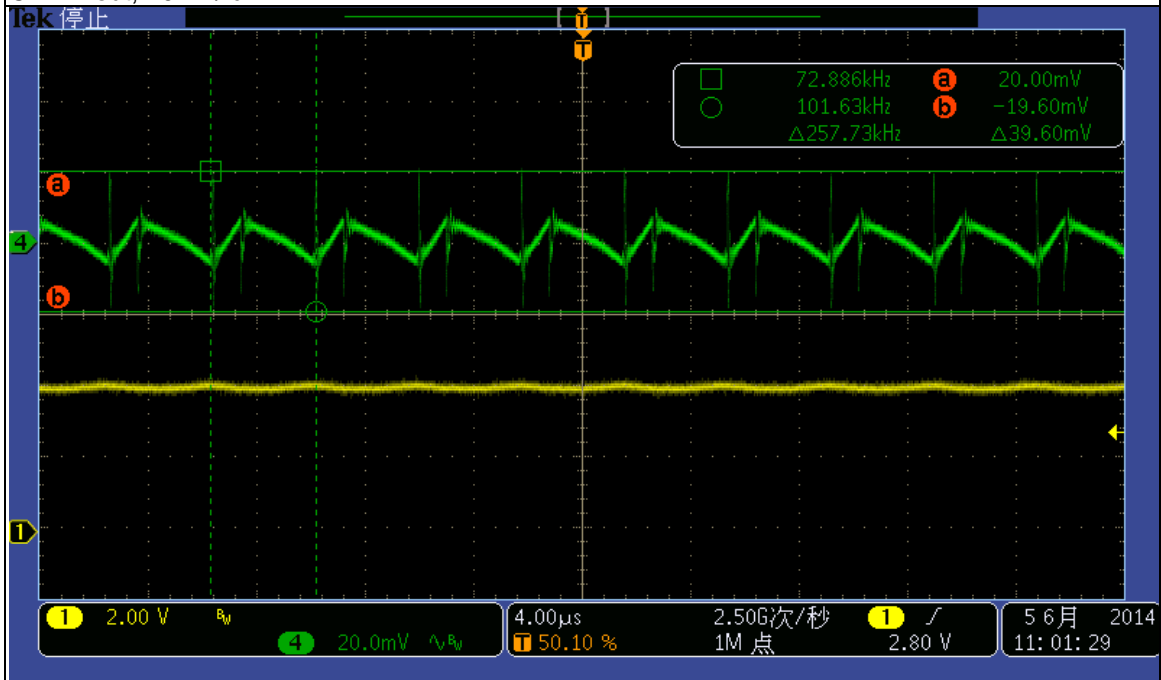


Vin:40Vdc Io: 6A
Ch1: Vout, 2V/div; Ch2: Vmaings, 2V/div
Ch3: Vin, 2V/div

3.5 RIPPLE VOLTAGE



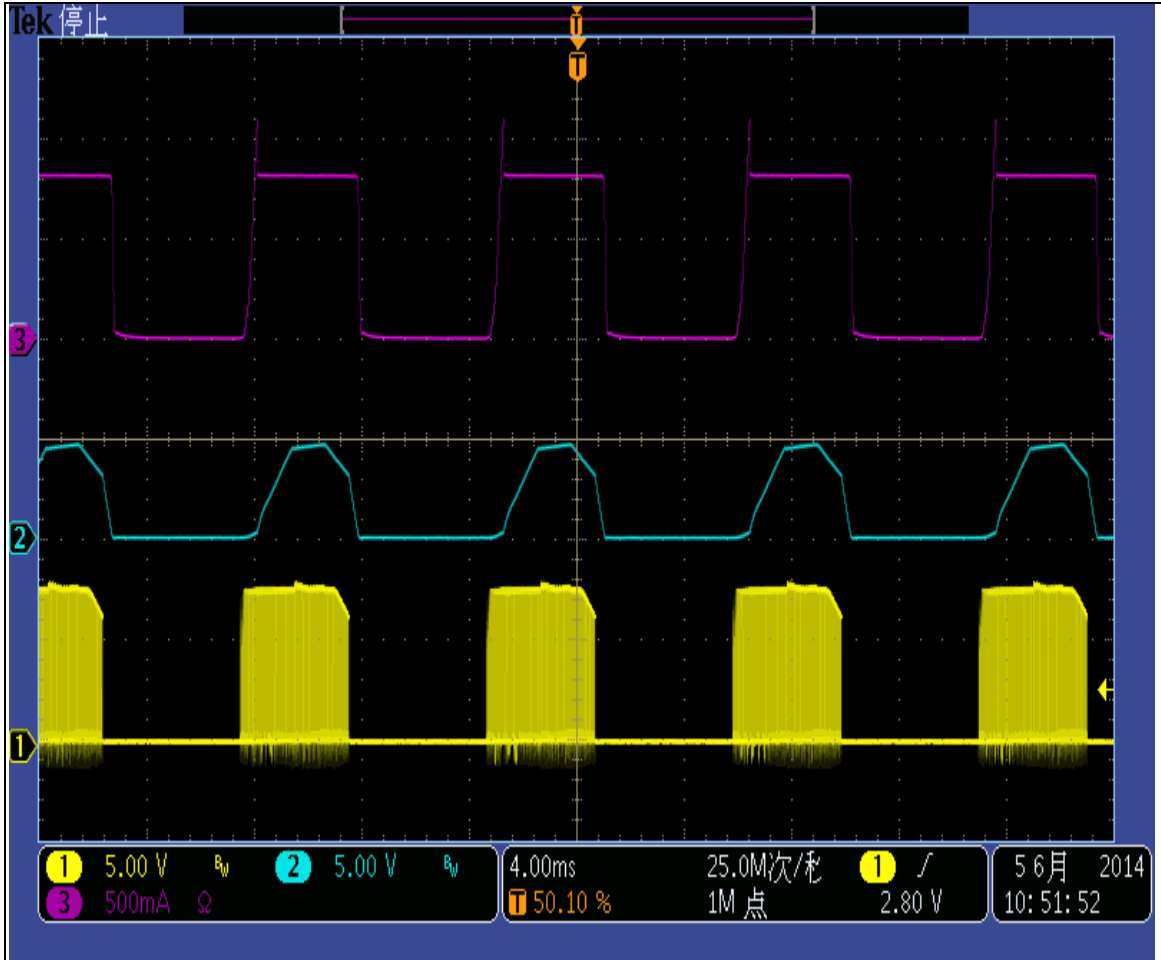
Vin:18Vac Io: 6A
 CH1: Vin, 20V/div
 CH4: Vout, 20mV/ div



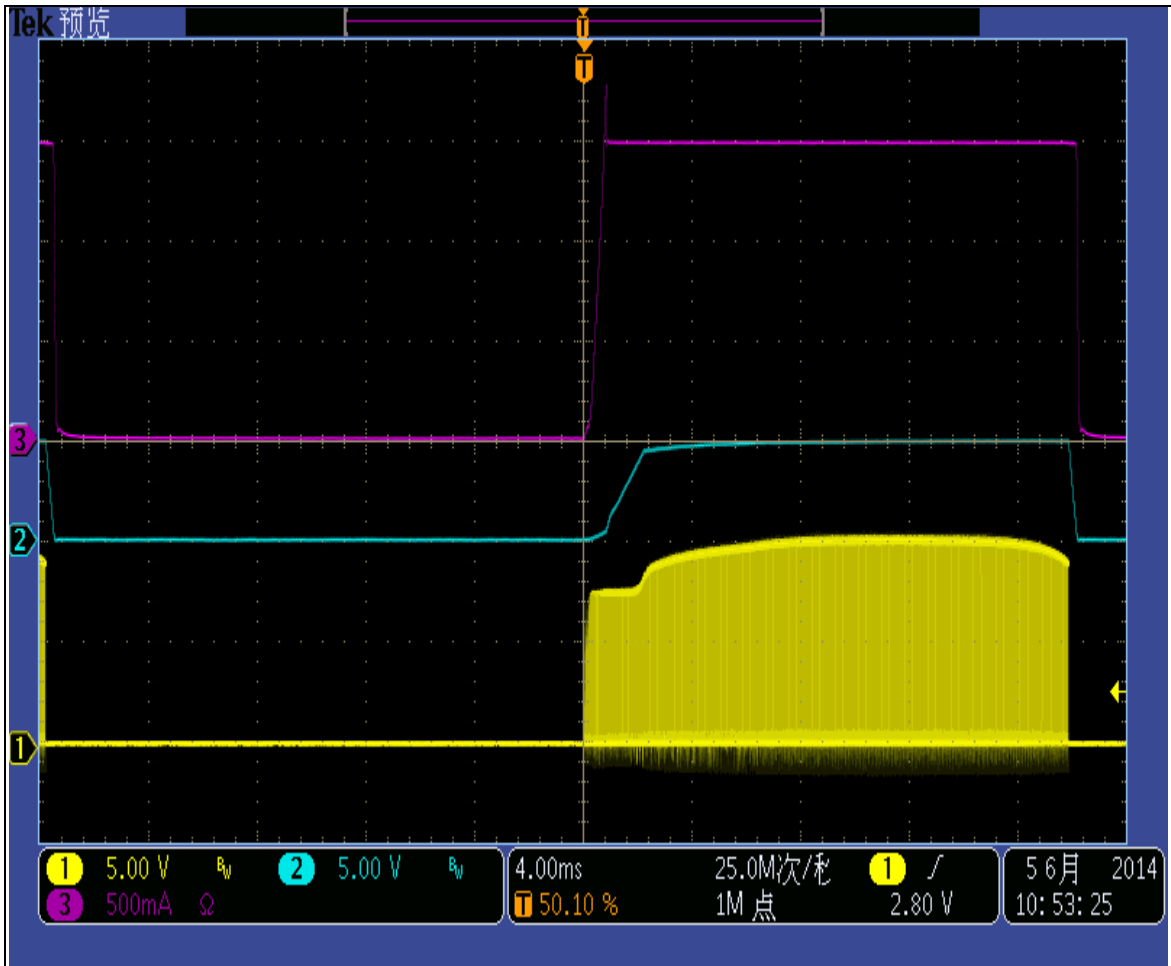
Vin:40Vac Io: 6A
 CH1: Vin, 20V/div
 CH4: Vout, 20mV/ div

3.6 OUTPUT SHORT PROTECTION

Input voltage	Output short protection
18&40Vdc	Hiccup up mode



Vin:18Vdc
CH1: Vmaings, 5V/div
CH2: Vout, 5V/div
CH3: Iout, 5A/div

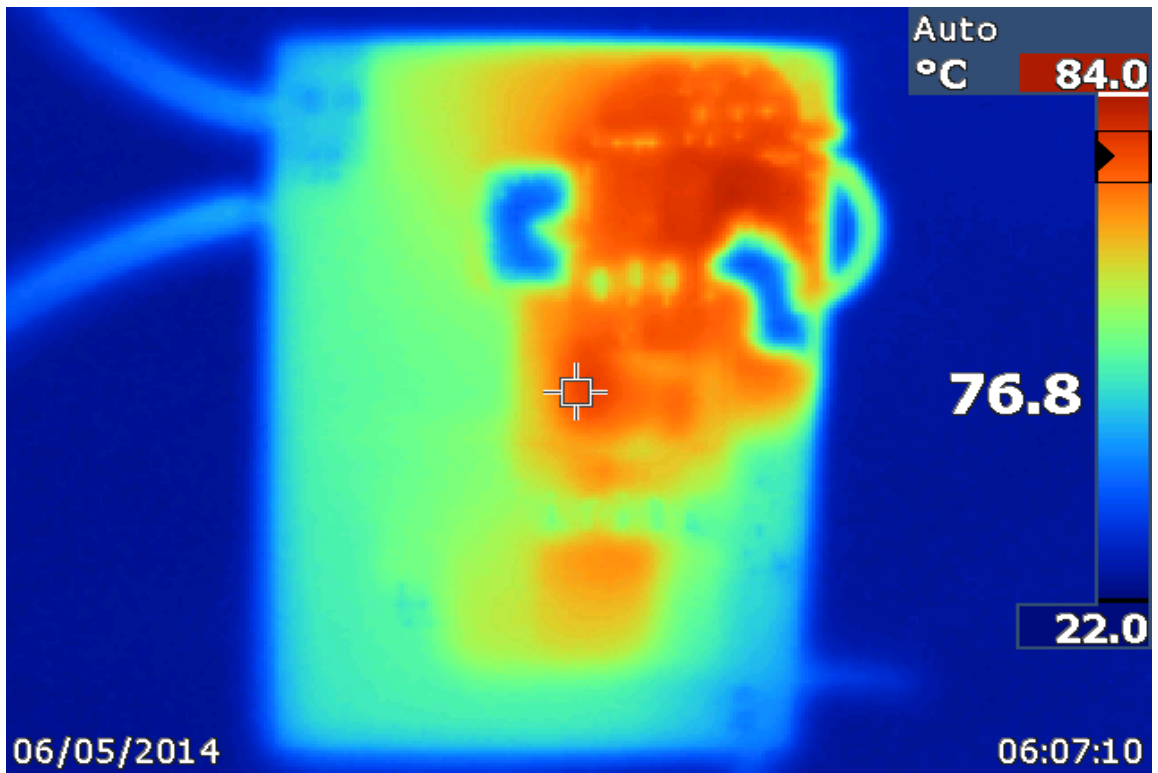


Vin:40Vdc
 CH1: Vmaings, 5V/div
 CH2: Vout, 5V/div
 CH3: Iout, 5A/div

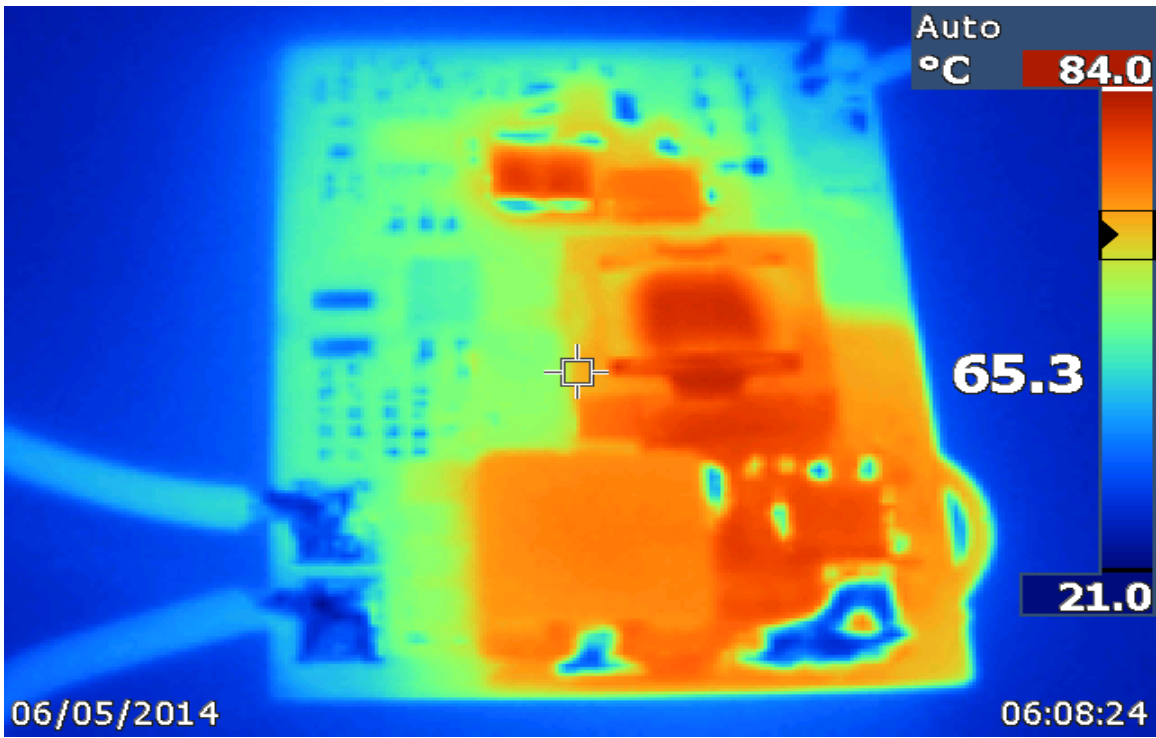
4 THERMAL IMAGE



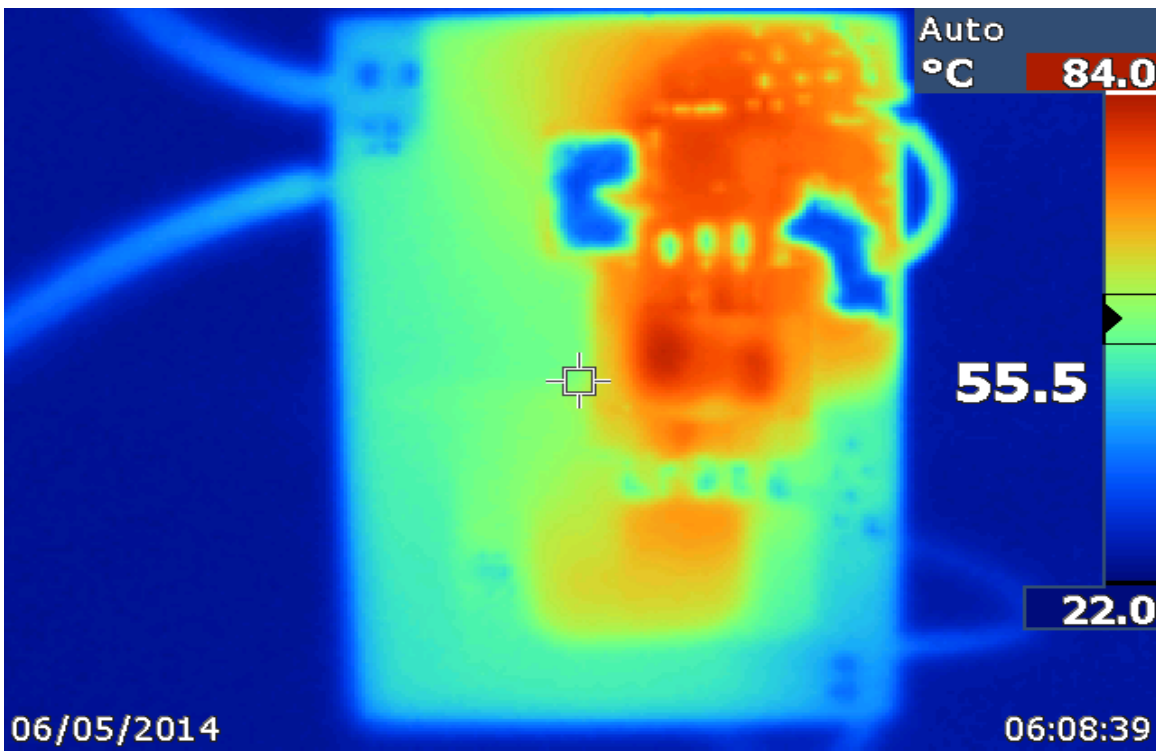
Top side, 40Vdc and 6A load, $T_a=25^\circ$



Bottom side, 40Vdc and 6A load, $T_a=25^\circ$



Top side, 18Vdc and 6A load, $T_a=25^\circ$



Bottom side, 18Vdc and 6A load, $T_a=25^\circ$

IMPORTANT NOTICE AND DISCLAIMER

TI PROVIDES TECHNICAL AND RELIABILITY DATA (INCLUDING DATASHEETS), DESIGN RESOURCES (INCLUDING REFERENCE DESIGNS), APPLICATION OR OTHER DESIGN ADVICE, WEB TOOLS, SAFETY INFORMATION, AND OTHER RESOURCES "AS IS" AND WITH ALL FAULTS, AND DISCLAIMS ALL WARRANTIES, EXPRESS AND IMPLIED, INCLUDING WITHOUT LIMITATION ANY IMPLIED WARRANTIES OF MERCHANTABILITY, FITNESS FOR A PARTICULAR PURPOSE OR NON-INFRINGEMENT OF THIRD PARTY INTELLECTUAL PROPERTY RIGHTS.

These resources are intended for skilled developers designing with TI products. You are solely responsible for (1) selecting the appropriate TI products for your application, (2) designing, validating and testing your application, and (3) ensuring your application meets applicable standards, and any other safety, security, or other requirements. These resources are subject to change without notice. TI grants you permission to use these resources only for development of an application that uses the TI products described in the resource. Other reproduction and display of these resources is prohibited. No license is granted to any other TI intellectual property right or to any third party intellectual property right. TI disclaims responsibility for, and you will fully indemnify TI and its representatives against, any claims, damages, costs, losses, and liabilities arising out of your use of these resources.

TI's products are provided subject to TI's Terms of Sale (<https://www.ti.com/legal/termsofsale.html>) or other applicable terms available either on [ti.com](https://www.ti.com) or provided in conjunction with such TI products. TI's provision of these resources does not expand or otherwise alter TI's applicable warranties or warranty disclaimers for TI products.

Mailing Address: Texas Instruments, Post Office Box 655303, Dallas, Texas 75265
Copyright © 2021, Texas Instruments Incorporated