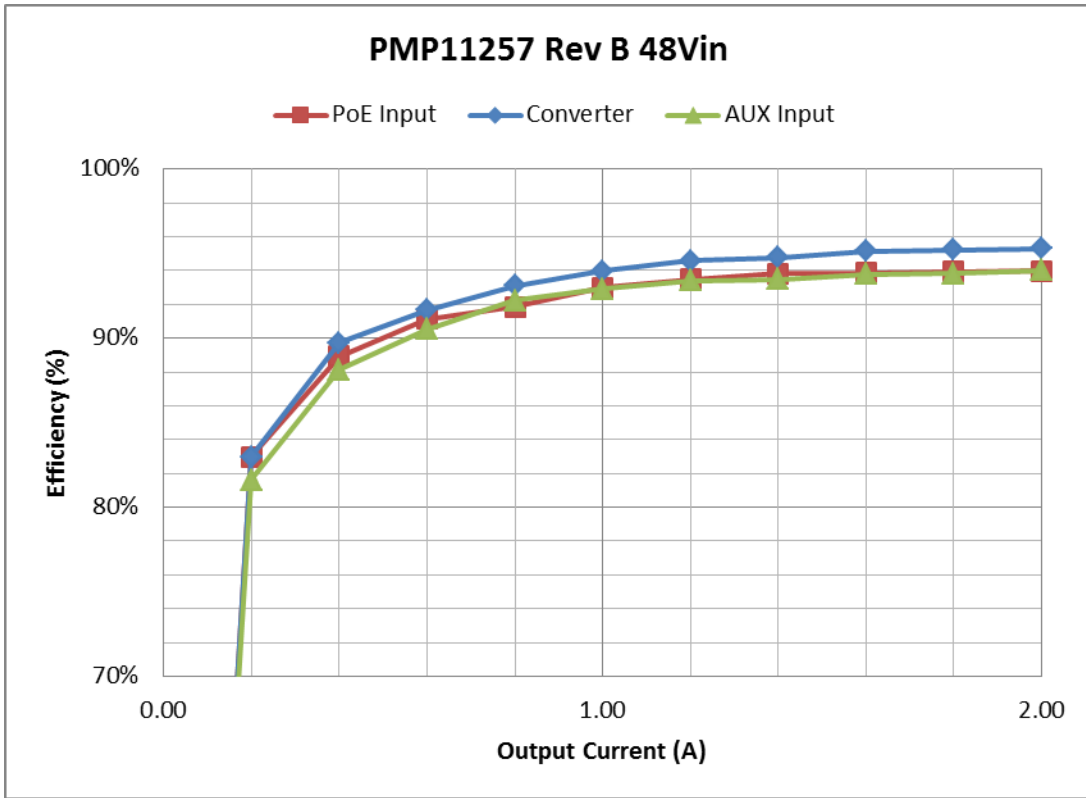


All measurements taken with a 48V input, 2A load unless otherwise noted.

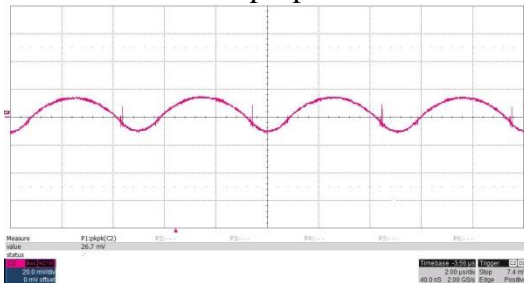
**Efficiency**



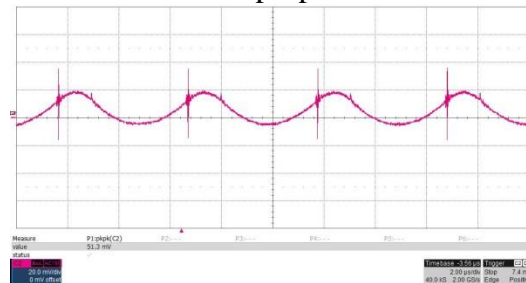
**Ripple and Noise**

Ripple measurements taken with a 2A load and 20MHz BWL.

Output Ripple (J4)  
 20mV/div, 2usec/div  
 Measured 26.7mV pk-pk:



Input Ripple (C11)  
 20mV/div, 2usec/div  
 Measured 51.3mV pk-pk:

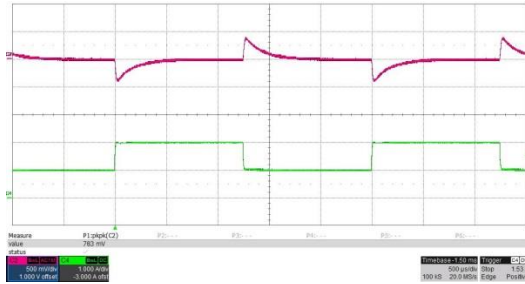


### Dynamic Loading

#### Load Step

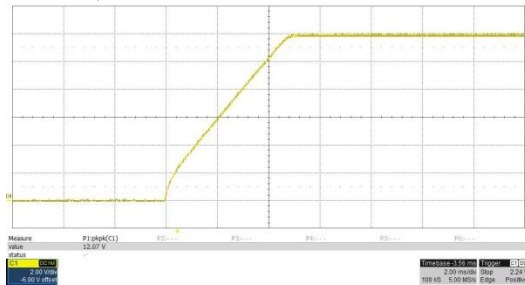
1A to 2A step load, 250mA/usec slew rate  
200mV/div, 500usec/div

Measured 783mVpp:

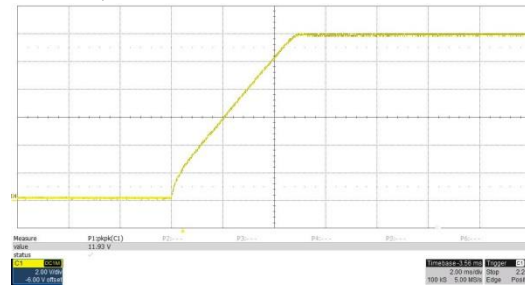


### Turn On Response

2A Load, 2msec/div  
2V/div, 2msec/div:

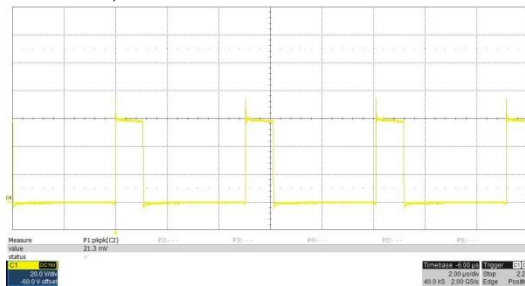


0A Load, 2msec/div  
2V/div, 2msec/div:



### Waveforms

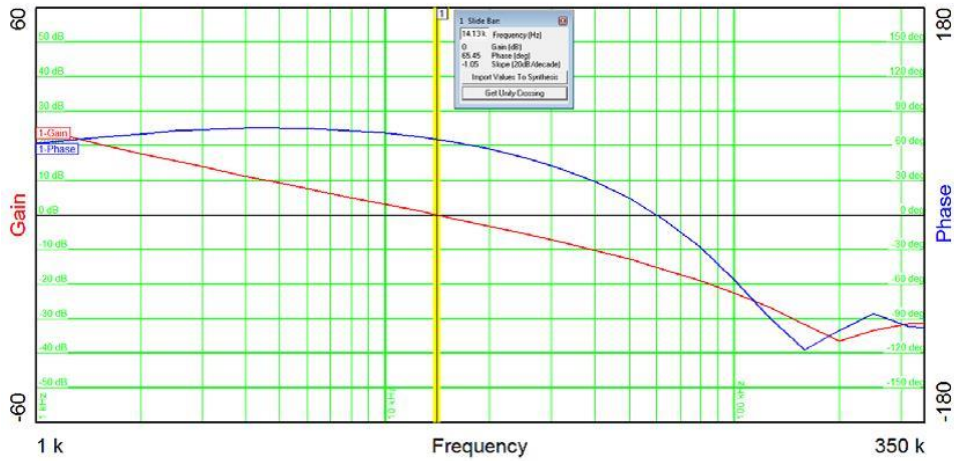
Switch node, 57V Input, 2A Load  
20V/div, 2usec/div



**Stability**

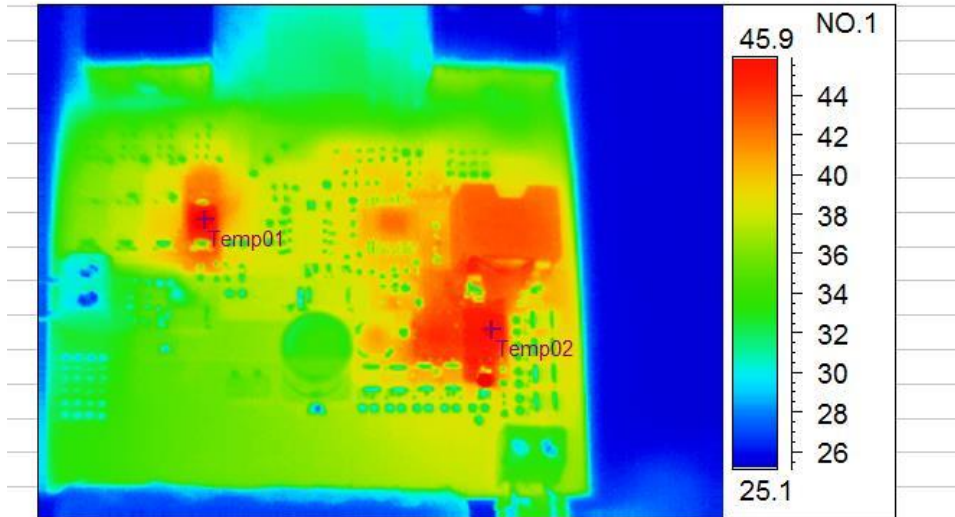
Loop response of the converter with a 48V input and 2A load.

BW=14Khz PM=65 degrees GM=15dB



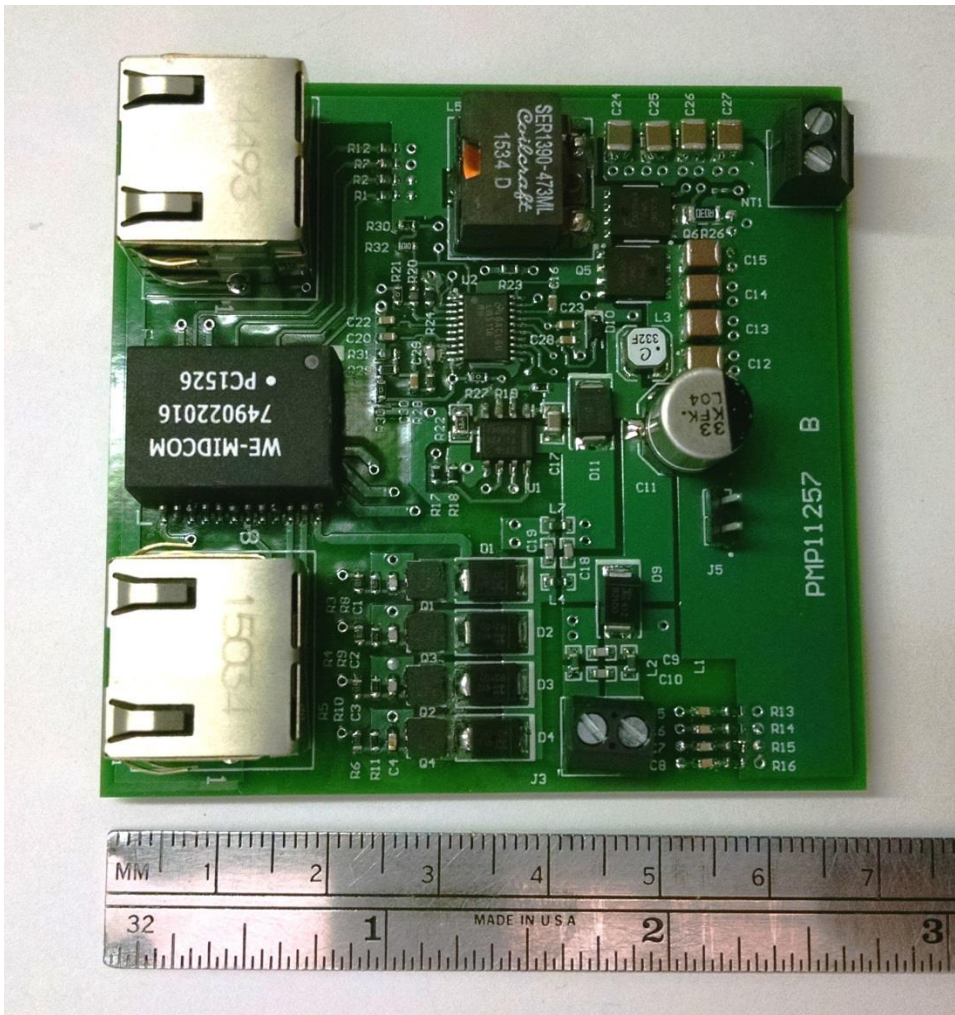
**Thermal:**

Thermal measurement taken with 48V input and 2A load, no air flow.



Spot analysis	Value
Temp01 Temperature	46.6°C
Temp02 Temperature	46.0°C

Photo:



## IMPORTANT NOTICE AND DISCLAIMER

TI PROVIDES TECHNICAL AND RELIABILITY DATA (INCLUDING DATASHEETS), DESIGN RESOURCES (INCLUDING REFERENCE DESIGNS), APPLICATION OR OTHER DESIGN ADVICE, WEB TOOLS, SAFETY INFORMATION, AND OTHER RESOURCES "AS IS" AND WITH ALL FAULTS, AND DISCLAIMS ALL WARRANTIES, EXPRESS AND IMPLIED, INCLUDING WITHOUT LIMITATION ANY IMPLIED WARRANTIES OF MERCHANTABILITY, FITNESS FOR A PARTICULAR PURPOSE OR NON-INFRINGEMENT OF THIRD PARTY INTELLECTUAL PROPERTY RIGHTS.

These resources are intended for skilled developers designing with TI products. You are solely responsible for (1) selecting the appropriate TI products for your application, (2) designing, validating and testing your application, and (3) ensuring your application meets applicable standards, and any other safety, security, or other requirements. These resources are subject to change without notice. TI grants you permission to use these resources only for development of an application that uses the TI products described in the resource. Other reproduction and display of these resources is prohibited. No license is granted to any other TI intellectual property right or to any third party intellectual property right. TI disclaims responsibility for, and you will fully indemnify TI and its representatives against, any claims, damages, costs, losses, and liabilities arising out of your use of these resources.

TI's products are provided subject to TI's Terms of Sale (<https://www.ti.com/legal/termsofsale.html>) or other applicable terms available either on [ti.com](https://www.ti.com) or provided in conjunction with such TI products. TI's provision of these resources does not expand or otherwise alter TI's applicable warranties or warranty disclaimers for TI products.

Mailing Address: Texas Instruments, Post Office Box 655303, Dallas, Texas 75265  
Copyright © 2021, Texas Instruments Incorporated