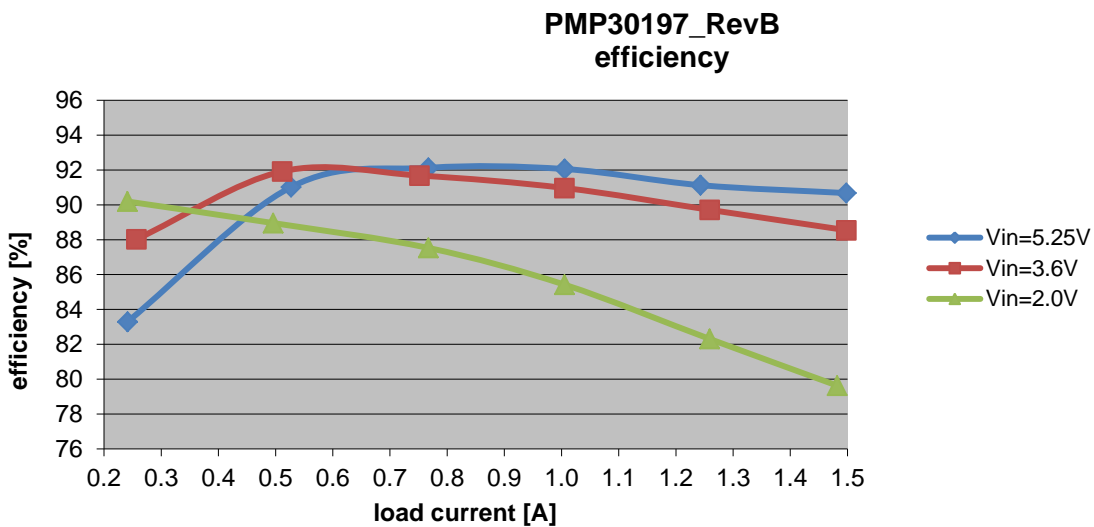
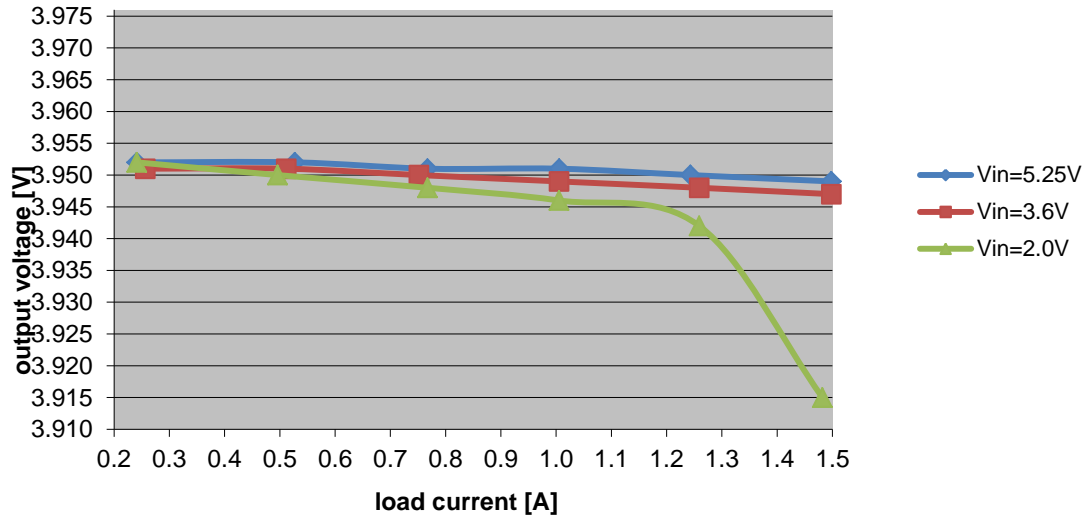


1 Efficiency and Load regulation



**PMP30197_RevB
load regulation**



1.1 Short circuit test

- Primary Side -3.2Vout short circuit test:

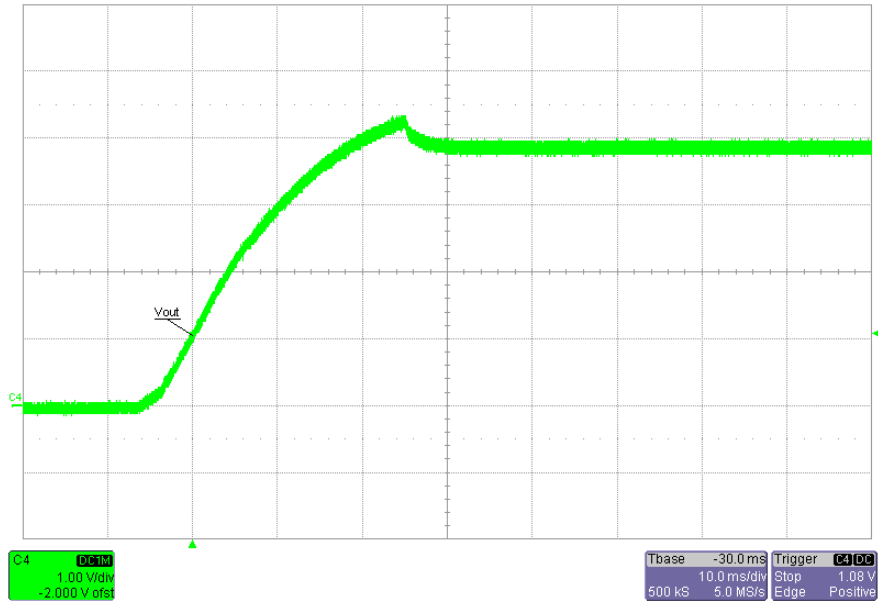
Input voltage [V]	Input current [A]		
5.25	0.65		-3.2Vout shorted
3.60	0.80		-3.2Vout shorted
2.00	0.95		-3.2Vout shorted

- Secondary Side 3.9Vout not short circuit protected

2 Startup

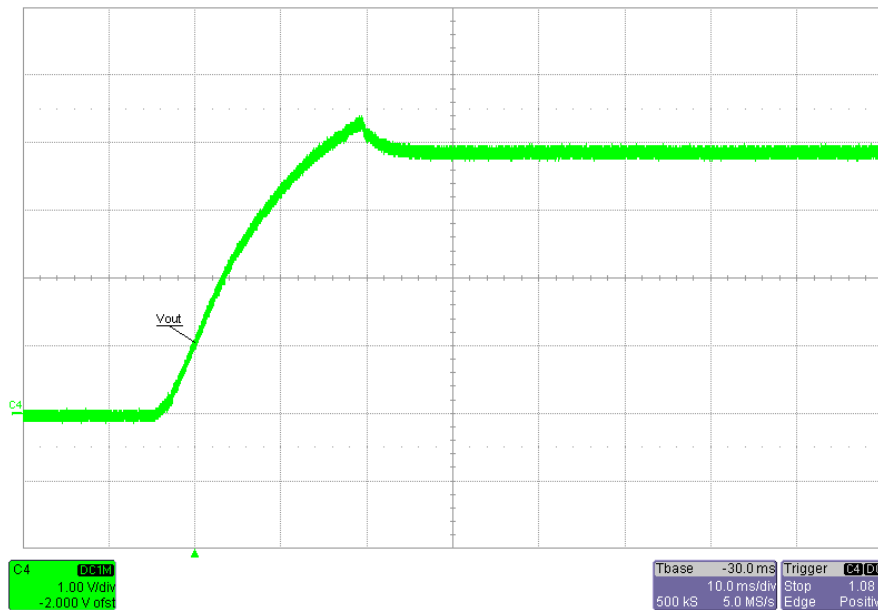
Input voltage = 3.5V

Load current = 1.5A

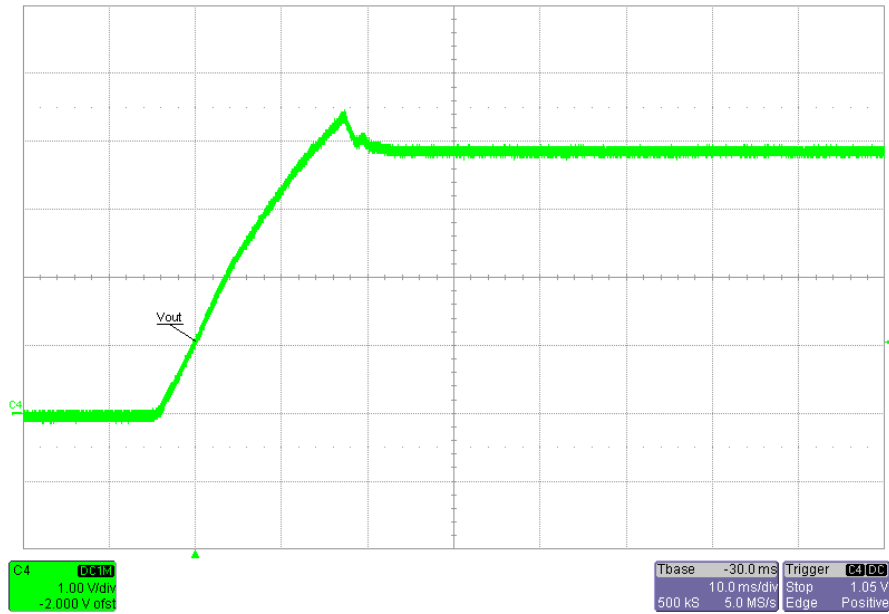


Input voltage = 5.25V

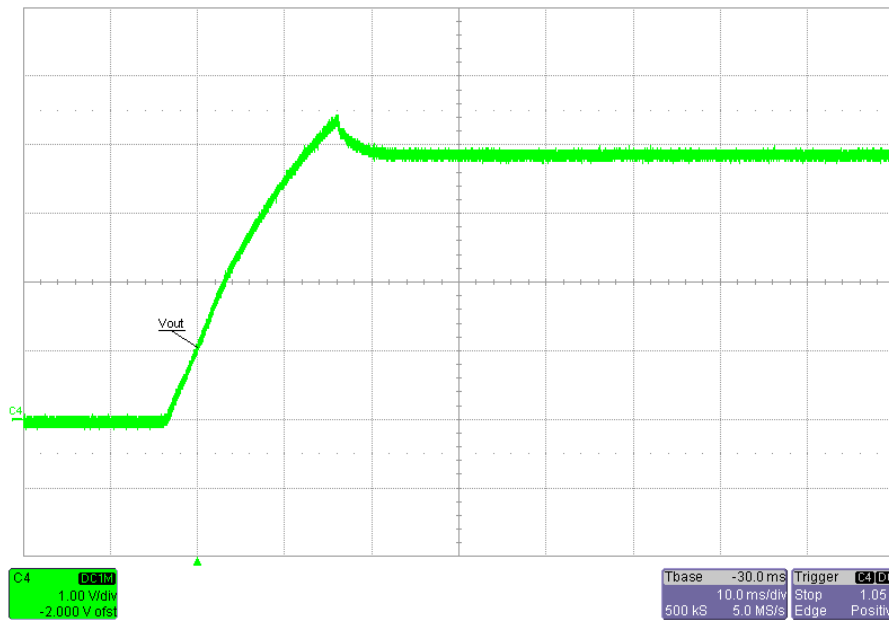
Load current = 1.5A



Input voltage = 3.5V
Load current = 0A



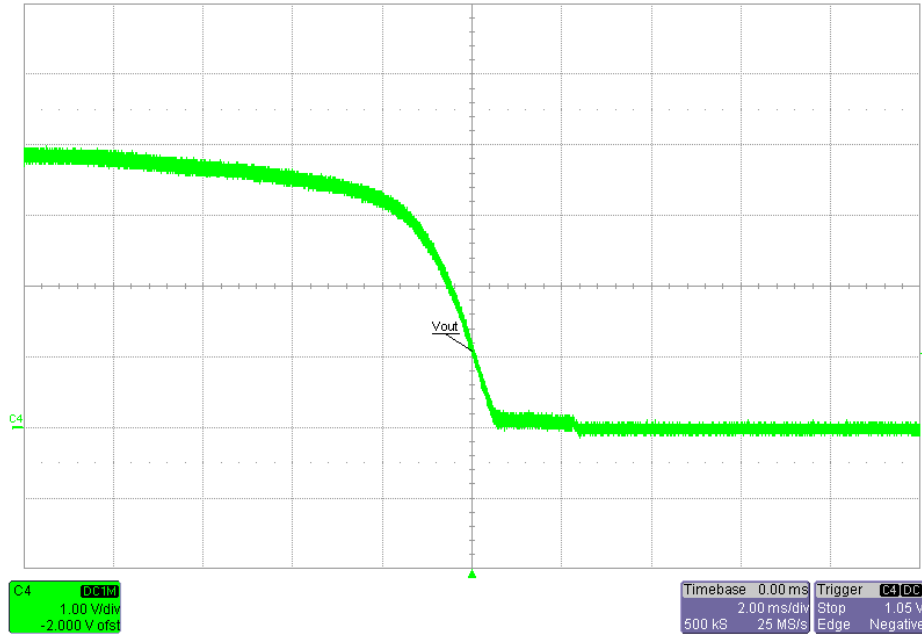
Input voltage = 5.25V
Load current = 0A



3 Shutdown

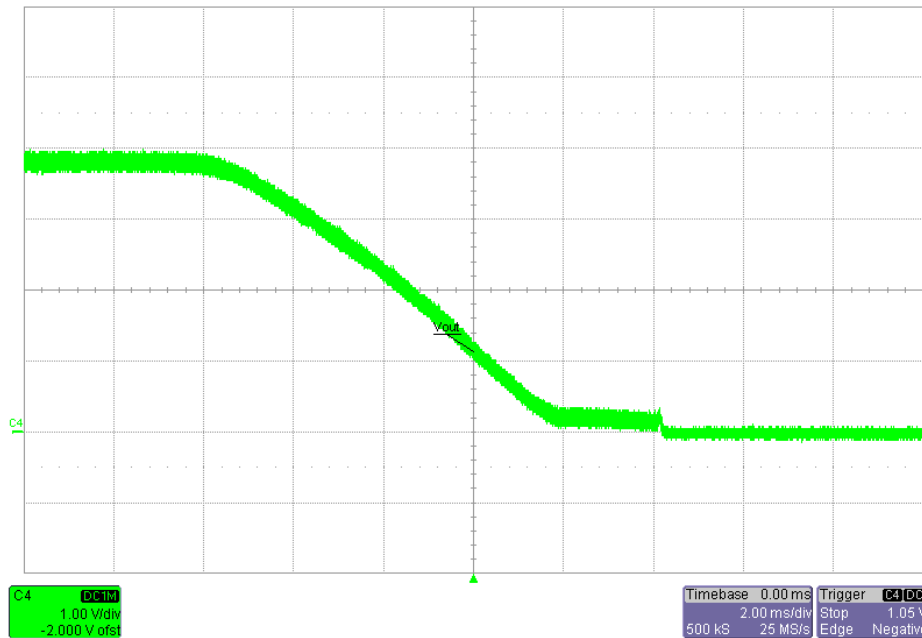
Input voltage = 5.25V

Load current = 1.5A



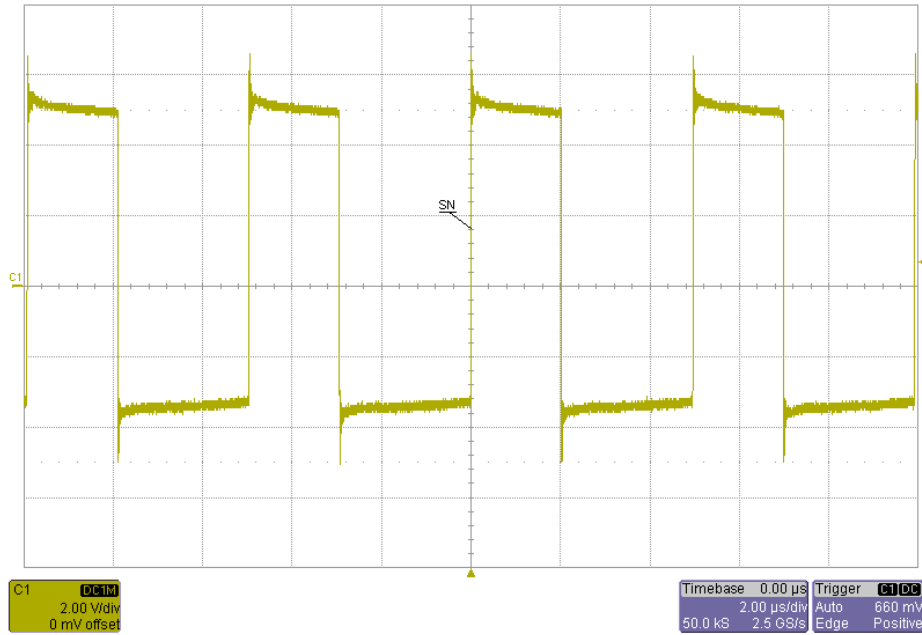
Input voltage = 2.0V

Load current = 1.5A

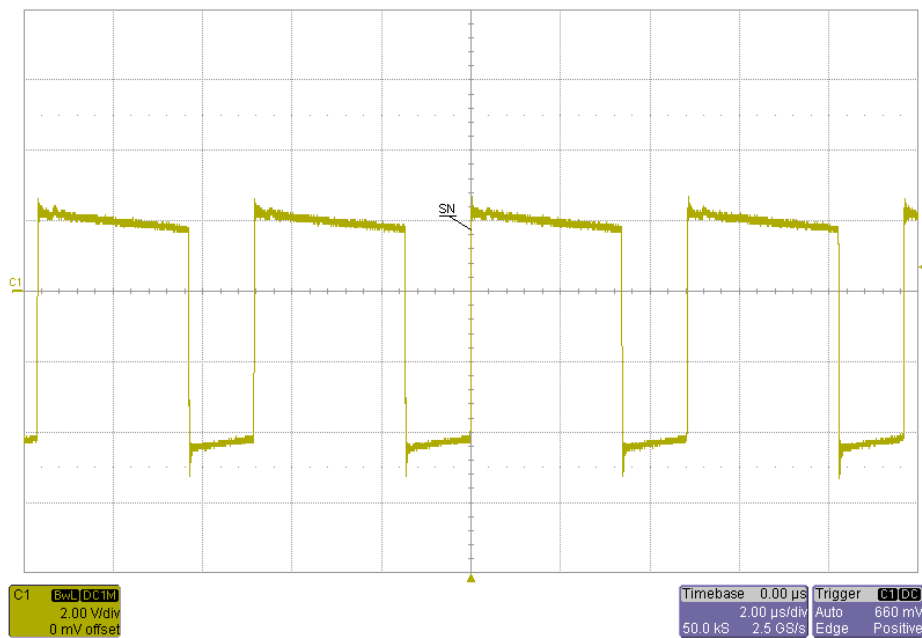


4 Switch Node

Input voltage = 5.25V
 Load current = 1.5A

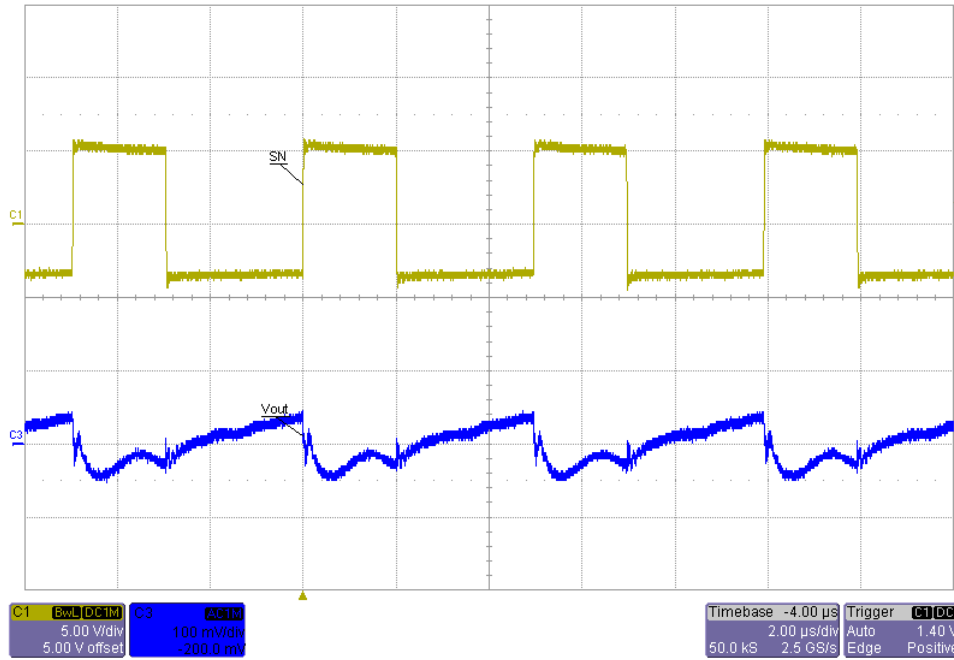


Input voltage = 2.0V
 Load current = 1.5A

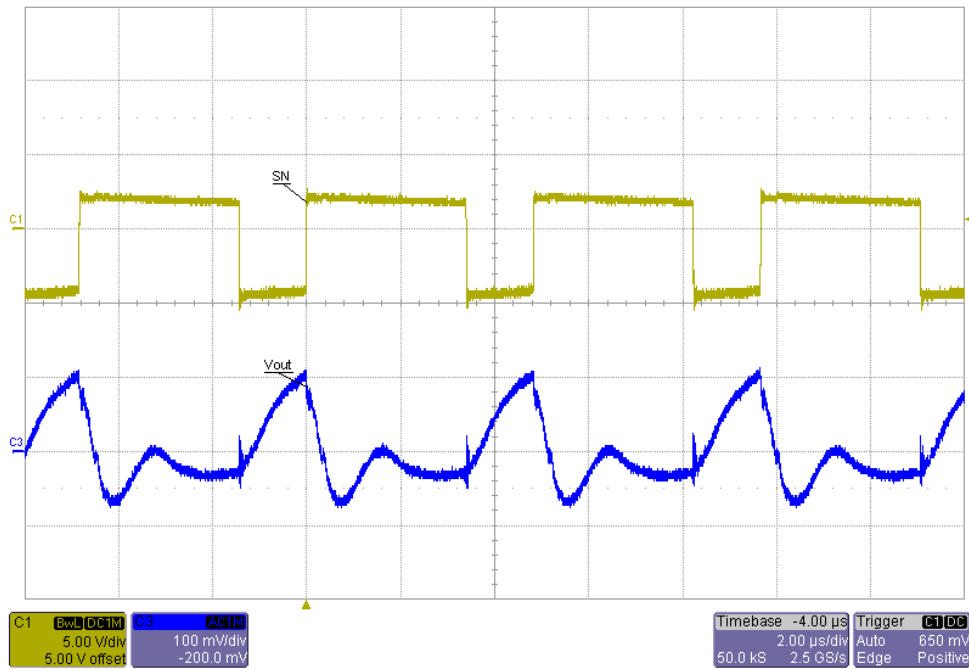


5 Output Ripple

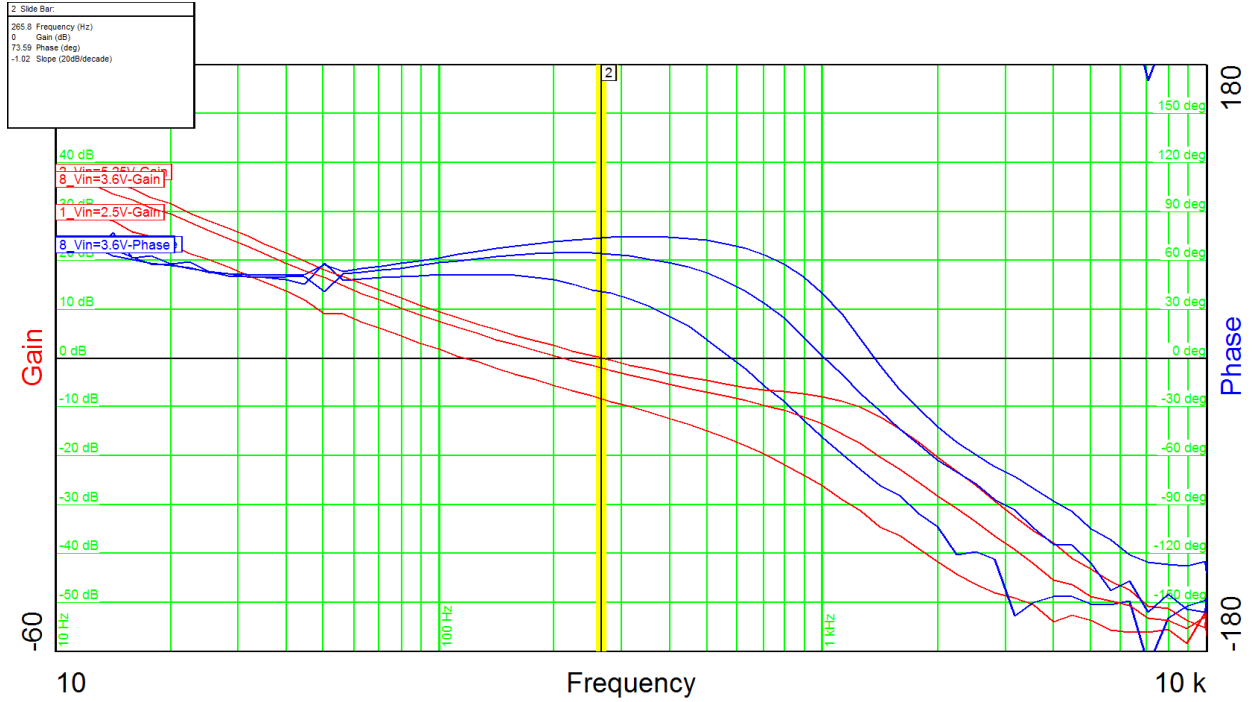
Input voltage = 5.25V
 Load current = 1.5A



Input voltage = 2.0V
 Load current = 1.5A



6 Control Loop Frequency Response



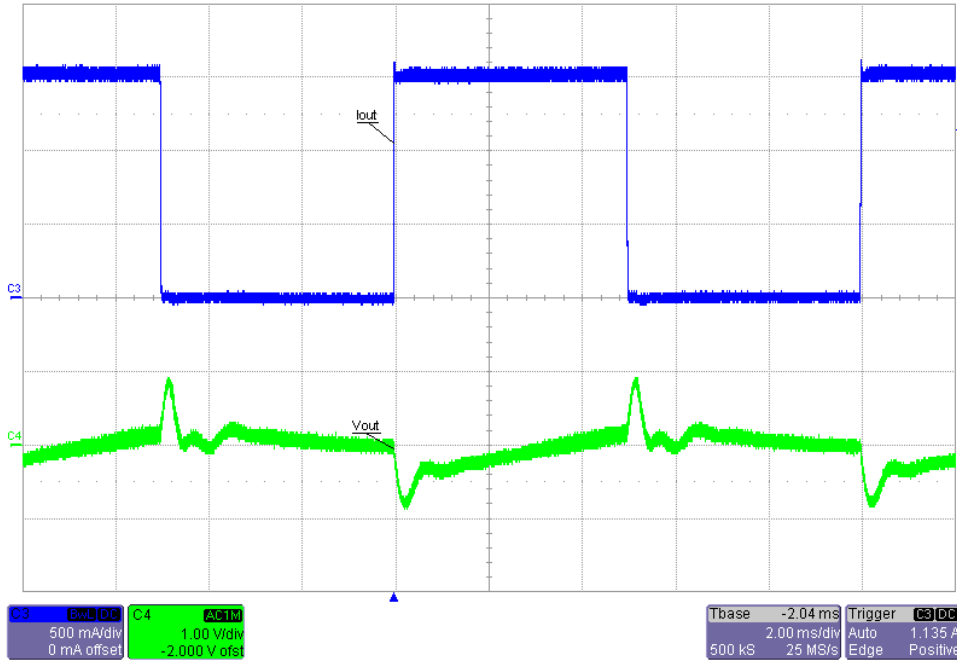
Output Load = 1.5A
 Input voltage = 5.25VDC
 Phase margin = 74°
 Bandwidth = 0.27kHz

Output Load = 1.5A
 Input voltage = 3.6VDC
 Phase margin = 64°
 Bandwidth = 0.21kHz

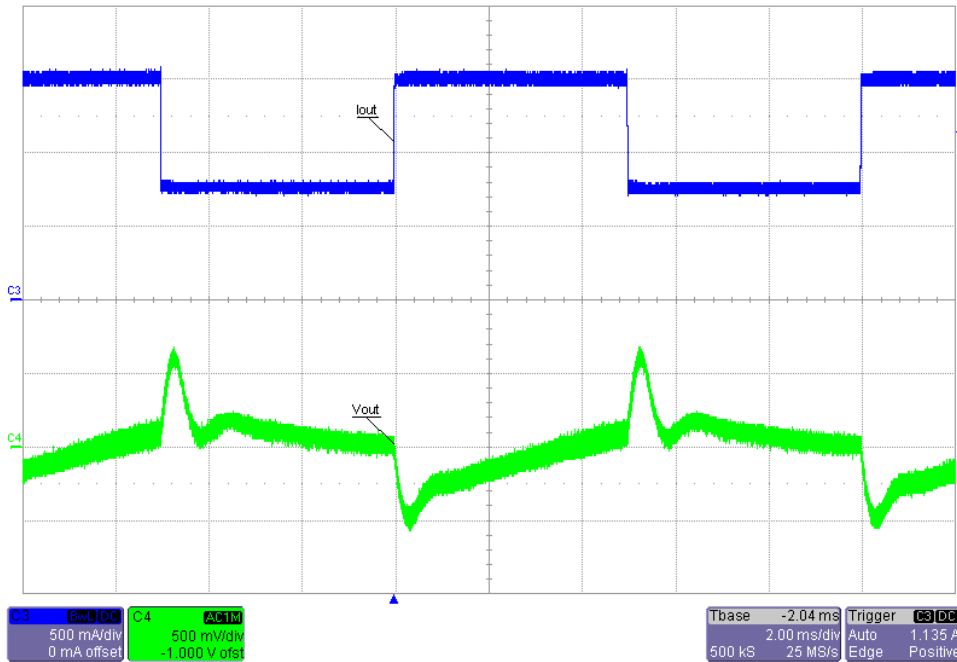
Output Load = 1.5A
 Input voltage = 2.5VDC
 Phase margin = 51°
 Bandwidth = 0.12kHz

7 Load step

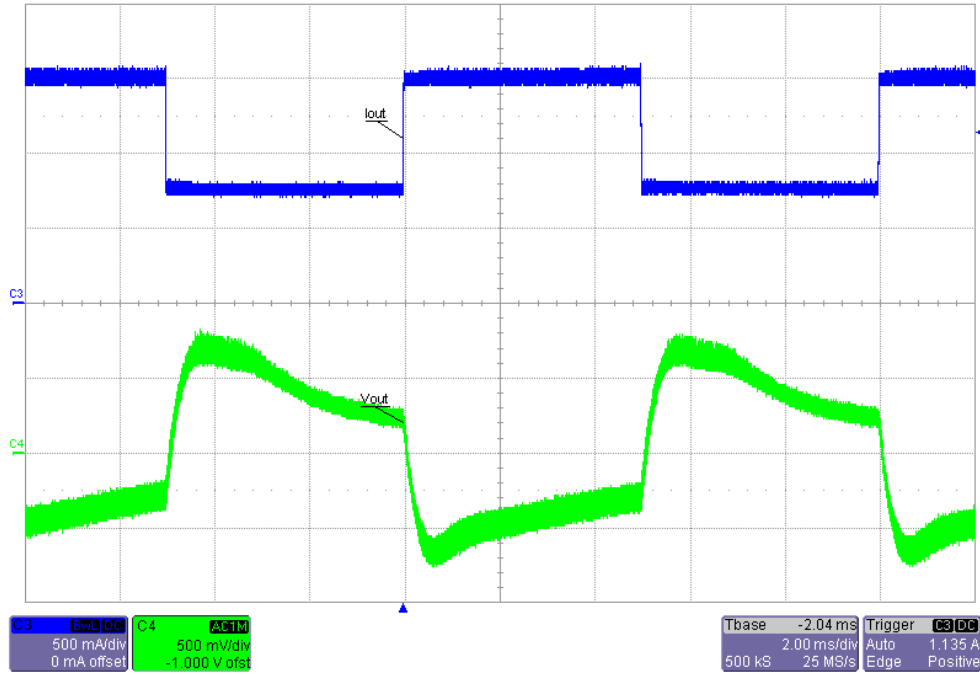
Input voltage = 5.25V
 Load current = 0A - 1.5A



Input voltage = 3.6V
 Load current = 0.75A - 1.5A



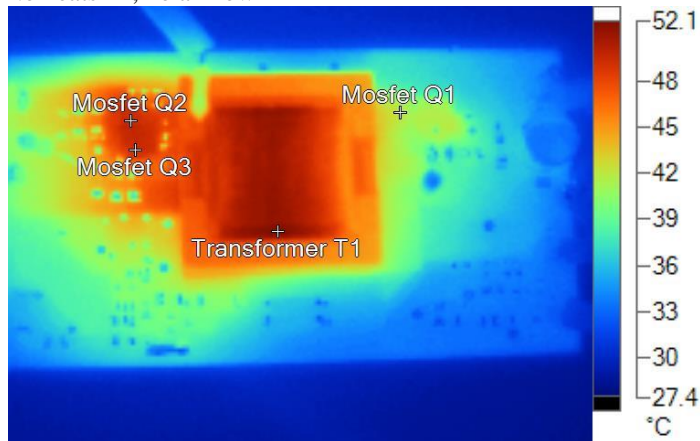
Input voltage = 5.25V
Load current = 0.75A - 1.5A



8 Thermal Analysis

The images below show the infrared images taken from the FlexCam after 15min at full load output power.

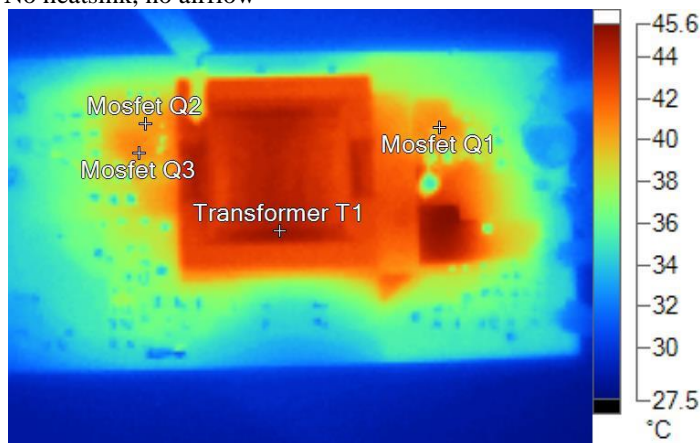
Input voltage = 2.0V
 Load current = 1.5A
 Ambient temperature = 25°C
 No heatsink, no airflow



Name	Temperature
Transformer T1	52.1°C
Mosfet Q2	49.7°C
Mosfet Q3	49.5°C
Mosfet Q1	42.3°C

IR20170307_1019 Vin=2V 3.83Vout@1.5A.is2

Input voltage = 5.25V
 Load current = 1.5A
 Ambient temperature = 25°C
 No heatsink, no airflow



Name	Temperature
Transformer T1	45.1°C
Mosfet Q2	40.2°C
Mosfet Q3	40.8°C
Mosfet Q1	40.6°C

IR20170307_1020 Vin=5.25V 3.87Vout@1.5A.is

IMPORTANT NOTICE AND DISCLAIMER

TI PROVIDES TECHNICAL AND RELIABILITY DATA (INCLUDING DATASHEETS), DESIGN RESOURCES (INCLUDING REFERENCE DESIGNS), APPLICATION OR OTHER DESIGN ADVICE, WEB TOOLS, SAFETY INFORMATION, AND OTHER RESOURCES "AS IS" AND WITH ALL FAULTS, AND DISCLAIMS ALL WARRANTIES, EXPRESS AND IMPLIED, INCLUDING WITHOUT LIMITATION ANY IMPLIED WARRANTIES OF MERCHANTABILITY, FITNESS FOR A PARTICULAR PURPOSE OR NON-INFRINGEMENT OF THIRD PARTY INTELLECTUAL PROPERTY RIGHTS.

These resources are intended for skilled developers designing with TI products. You are solely responsible for (1) selecting the appropriate TI products for your application, (2) designing, validating and testing your application, and (3) ensuring your application meets applicable standards, and any other safety, security, or other requirements. These resources are subject to change without notice. TI grants you permission to use these resources only for development of an application that uses the TI products described in the resource. Other reproduction and display of these resources is prohibited. No license is granted to any other TI intellectual property right or to any third party intellectual property right. TI disclaims responsibility for, and you will fully indemnify TI and its representatives against, any claims, damages, costs, losses, and liabilities arising out of your use of these resources.

TI's products are provided subject to TI's Terms of Sale (<https://www.ti.com/legal/termsofsale.html>) or other applicable terms available either on [ti.com](https://www.ti.com) or provided in conjunction with such TI products. TI's provision of these resources does not expand or otherwise alter TI's applicable warranties or warranty disclaimers for TI products.

Mailing Address: Texas Instruments, Post Office Box 655303, Dallas, Texas 75265
Copyright © 2021, Texas Instruments Incorporated