

**Test Data
For PMP21277
November 29, 2017**



Table of Contents

1. Design Specifications	3
2. Circuit Description.....	3
3. PMP21277 Board Photos	4
4. Thermal Data.....	5
5. Efficiency	7
5.1 Efficiency Chart	7
5.2 Efficiency Data.....	8
6 Waveforms.....	9
6.1 Load Transient Response	9
6.2 Startup	10
6.3 Output Voltage Ripple and Switch Node Voltage	11

1. Design Specifications

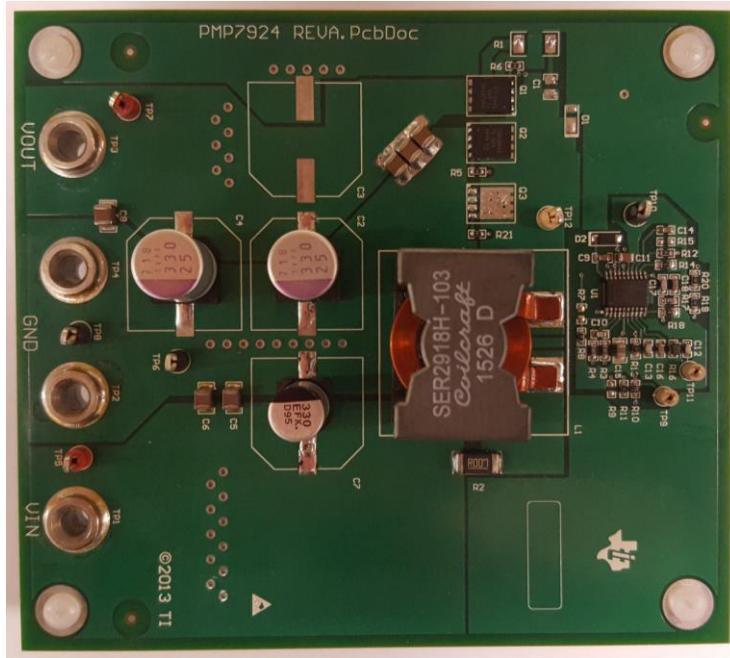
Vin Minimum	10.8VDC
Vin Nominal	12VDC
Vin Maximum	13.2VDC
Vout	20.5VDC
Iout	7.5A Max. Continuous
Switching Frequency	≈ 250KHz

2. Circuit Description

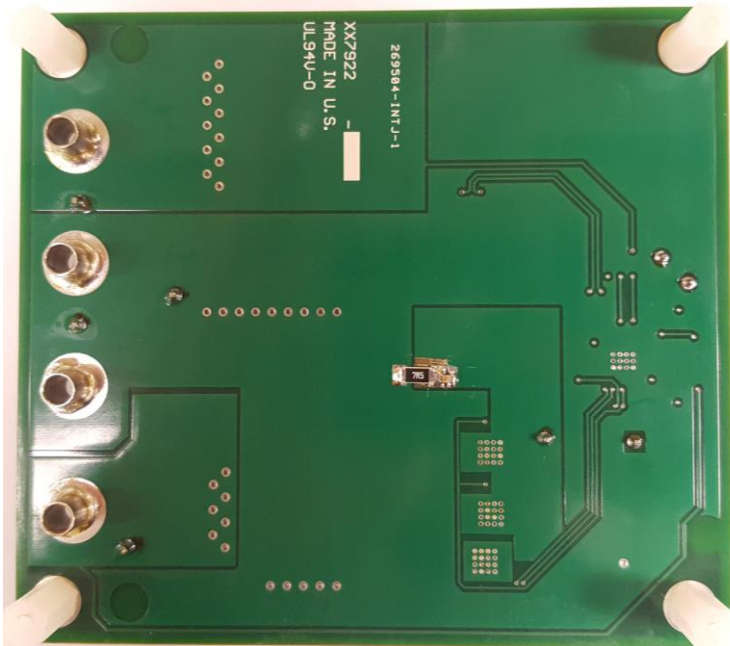
PMP21277 is a Single-Phase Synchronous Boost Converter using the LM5122 boost controller IC. The design accepts an input voltage of 10.8Vin to 13.2Vin (12Vin Nominal) and provides an output of 20.5Vout capable of supplying 7.5A of continuous current to the load. The design was built on the PMP7924 RevA PCB, which was modified to the PMP21277 design configuration and requirements. The PCB is a 4-layer board with 1oz Copper on outer layers and 0.5oz Copper on inner layers.

3. PMP21277 Board Photos

Board Dimensions: 4.31" x 3.85"

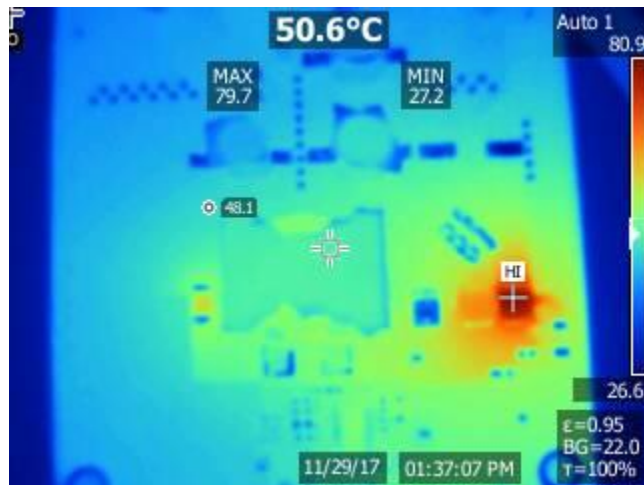


Board Photo (Top)



Board Photo (Bottom)

4. Thermal Data



IR thermal image taken at steady state with 10.8Vin and 7.5A load (no airflow; ambient at room temp.)



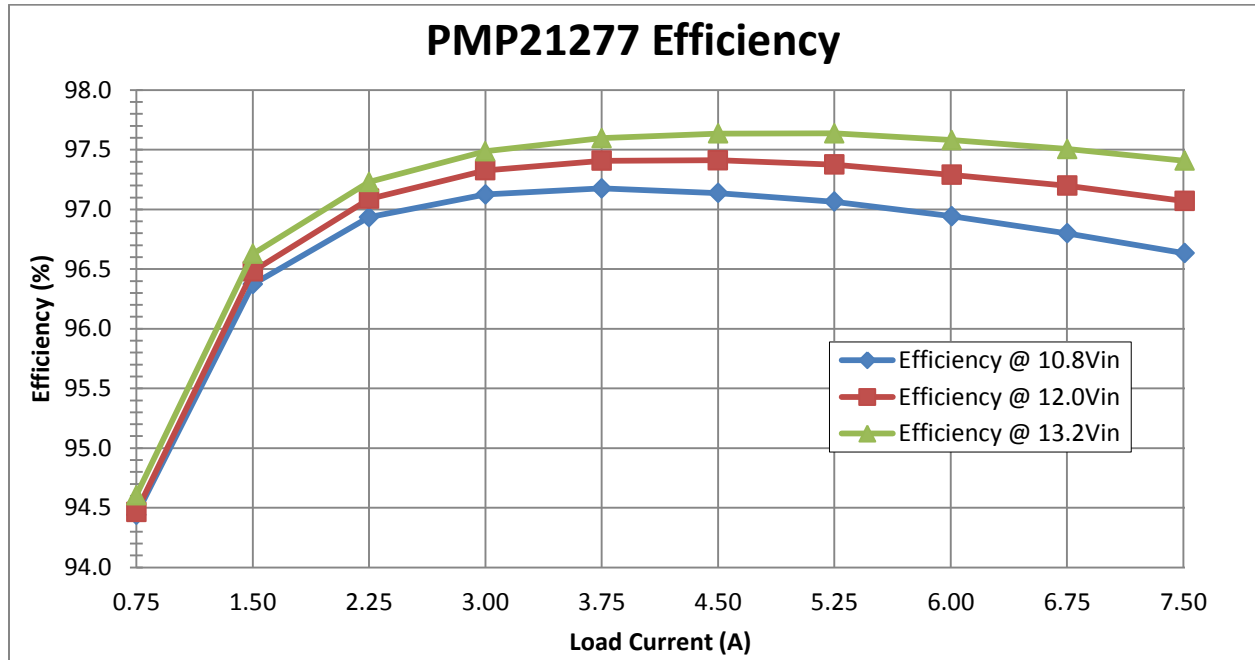
IR thermal image taken at steady state with 12Vin and 7.5A load (no airflow; ambient at room temp.)



IR thermal image taken at steady state with 13.2Vin and 7.5A load (no airflow; ambient at room temp.)

5. Efficiency

5.1 Efficiency Chart



5.2 Efficiency Data

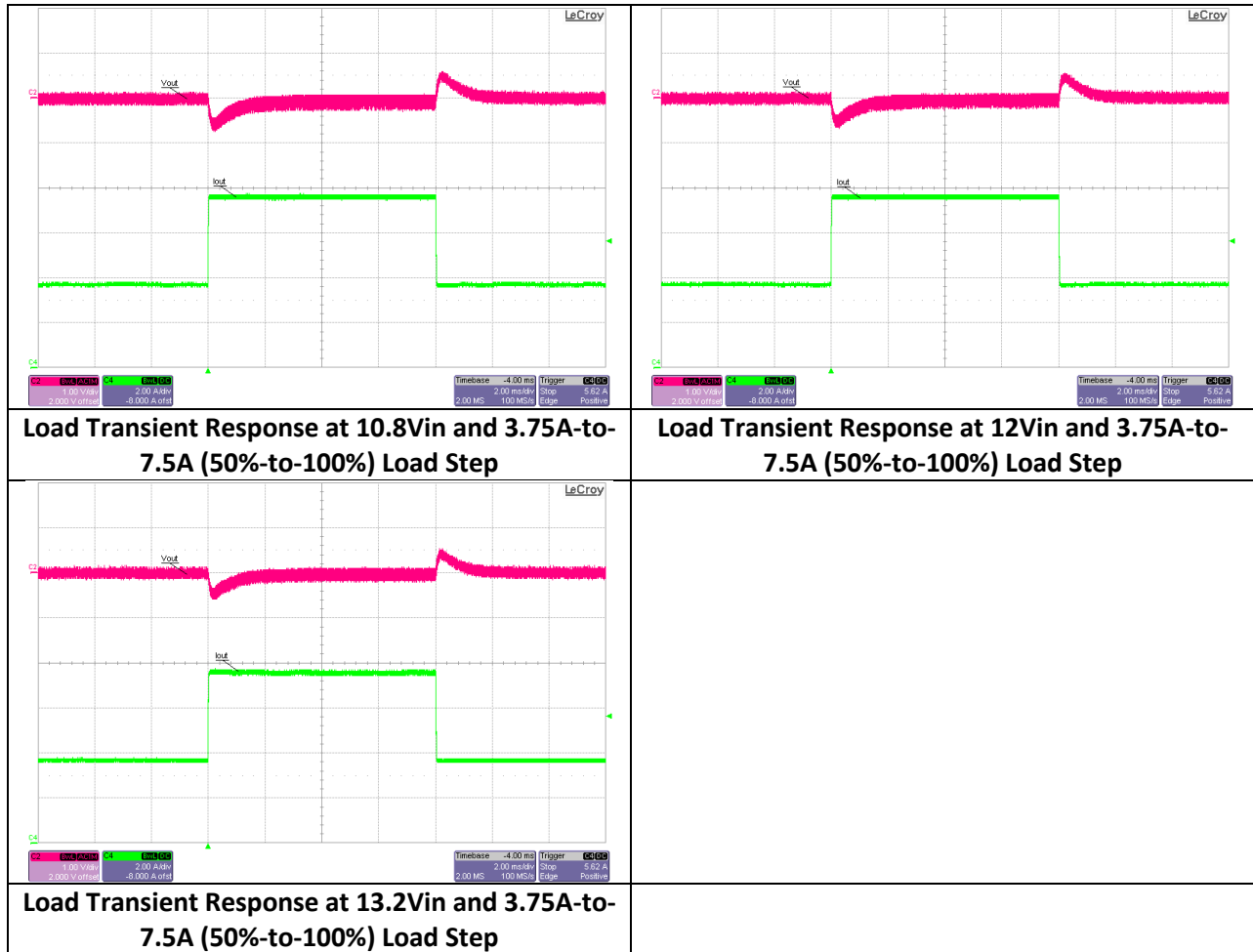
Vin (V)	Iin (A)	Vout (V)	Iout (A)	Pin (W)	Pout (W)	Ploss (W)	Efficiency (%)
10.8	1.506	20.478	0.7501	16.265	15.361	0.904	94.44
10.8	2.953	20.478	1.5009	31.892	30.735	1.157	96.37
10.8	4.402	20.479	2.2503	47.542	46.084	1.458	96.93
10.8	5.859	20.479	3.001	63.277	61.457	1.820	97.12
10.8	7.317	20.479	3.7498	79.024	76.792	2.231	97.18
10.8	8.786	20.479	4.5008	94.889	92.172	2.717	97.14
10.8	10.256	20.479	5.2499	110.765	107.513	3.252	97.06
10.8	11.75	20.479	6.0071	126.900	123.019	3.881	96.94
10.8	13.228	20.479	6.7527	142.862	138.289	4.574	96.80
10.8	14.736	20.479	7.5096	159.149	153.789	5.360	96.63

Vin (V)	Iin (A)	Vout (V)	Iout (A)	Pin (W)	Pout (W)	Ploss (W)	Efficiency (%)
12	1.355	20.48	0.75	16.260	15.360	0.900	94.46
12	2.655	20.479	1.501	31.860	30.739	1.121	96.48
12	3.956	20.479	2.2506	47.472	46.090	1.382	97.09
12	5.26	20.479	2.9998	63.120	61.433	1.687	97.33
12	6.57	20.479	3.75	78.840	76.796	2.044	97.41
12	7.883	20.479	4.4996	94.596	92.147	2.449	97.41
12	9.201	20.479	5.25	110.412	107.515	2.897	97.38
12	10.537	20.479	6.007	126.444	123.017	3.427	97.29
12	11.857	20.48	6.7528	142.284	138.297	3.987	97.20
12	13.203	20.48	7.5095	158.436	153.795	4.641	97.07

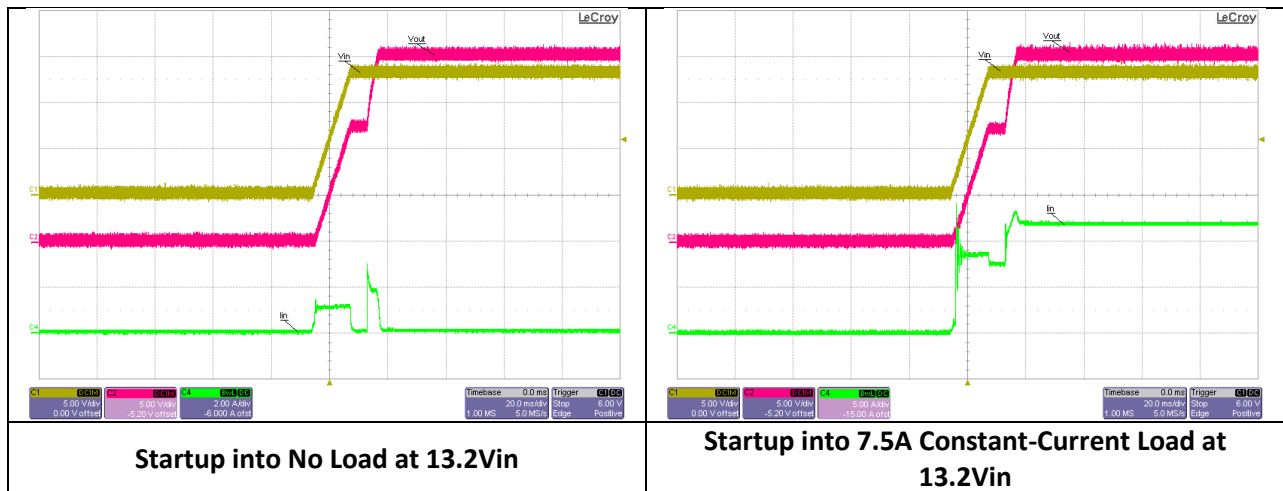
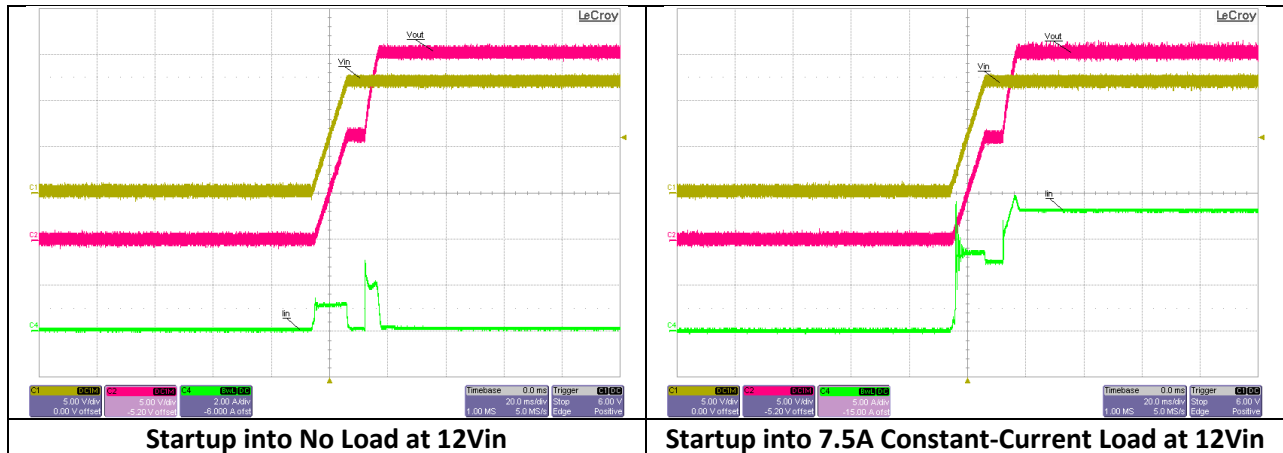
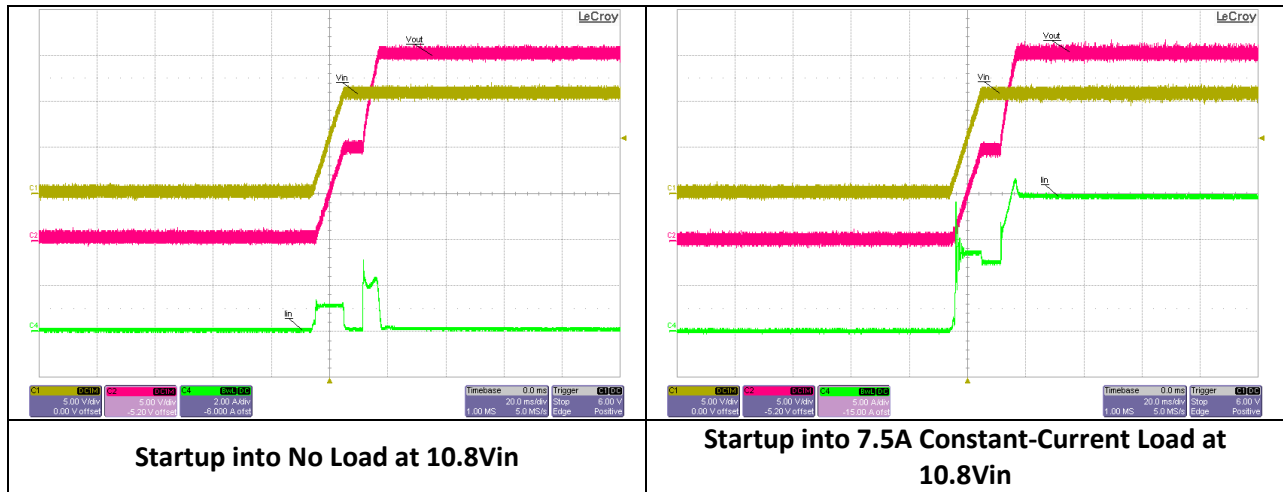
Vin (V)	Iin (A)	Vout (V)	Iout (A)	Pin (W)	Pout (W)	Ploss (W)	Efficiency (%)
13.2	1.23	20.48	0.75	16.236	15.360	0.876	94.60
13.2	2.41	20.479	1.501	31.812	30.739	1.073	96.63
13.2	3.591	20.479	2.2505	47.401	46.088	1.313	97.23
13.2	4.774	20.479	2.9998	63.017	61.433	1.584	97.49
13.2	5.961	20.479	3.7499	78.685	76.794	1.891	97.60
13.2	7.152	20.479	4.5009	94.406	92.174	2.232	97.64
13.2	8.342	20.48	5.2496	110.114	107.512	2.603	97.64
13.2	9.551	20.48	6.007	126.073	123.023	3.050	97.58
13.2	10.745	20.48	6.7527	141.834	138.295	3.539	97.51
13.2	11.961	20.48	7.5094	157.885	153.793	4.093	97.41

6 Waveforms

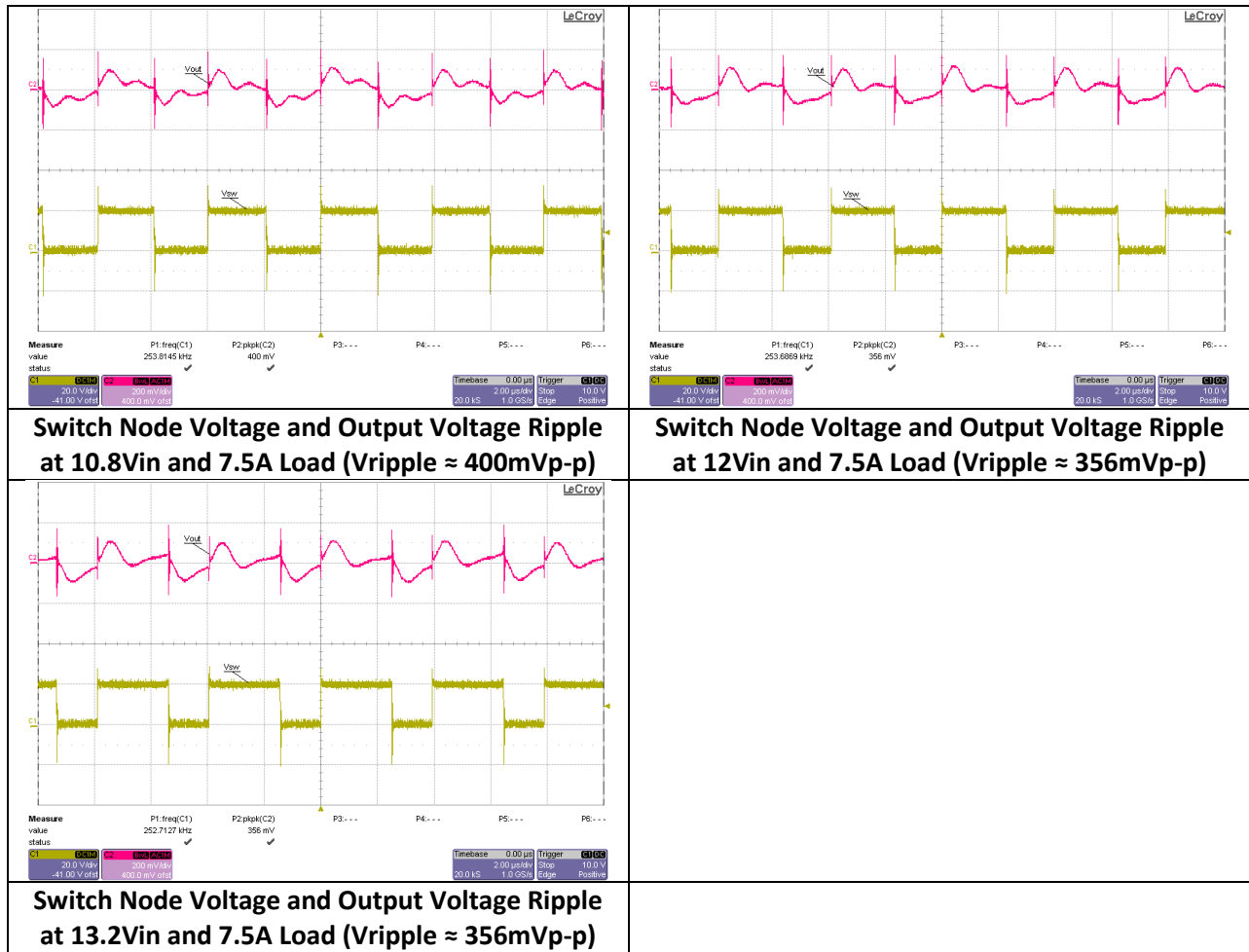
6.1 Load Transient Response



6.2 Startup



6.3 Output Voltage Ripple and Switch Node Voltage



IMPORTANT NOTICE AND DISCLAIMER

TI PROVIDES TECHNICAL AND RELIABILITY DATA (INCLUDING DATASHEETS), DESIGN RESOURCES (INCLUDING REFERENCE DESIGNS), APPLICATION OR OTHER DESIGN ADVICE, WEB TOOLS, SAFETY INFORMATION, AND OTHER RESOURCES "AS IS" AND WITH ALL FAULTS, AND DISCLAIMS ALL WARRANTIES, EXPRESS AND IMPLIED, INCLUDING WITHOUT LIMITATION ANY IMPLIED WARRANTIES OF MERCHANTABILITY, FITNESS FOR A PARTICULAR PURPOSE OR NON-INFRINGEMENT OF THIRD PARTY INTELLECTUAL PROPERTY RIGHTS.

These resources are intended for skilled developers designing with TI products. You are solely responsible for (1) selecting the appropriate TI products for your application, (2) designing, validating and testing your application, and (3) ensuring your application meets applicable standards, and any other safety, security, or other requirements. These resources are subject to change without notice. TI grants you permission to use these resources only for development of an application that uses the TI products described in the resource. Other reproduction and display of these resources is prohibited. No license is granted to any other TI intellectual property right or to any third party intellectual property right. TI disclaims responsibility for, and you will fully indemnify TI and its representatives against, any claims, damages, costs, losses, and liabilities arising out of your use of these resources.

TI's products are provided subject to TI's Terms of Sale (<https://www.ti.com/legal/termsofsale.html>) or other applicable terms available either on [ti.com](https://www.ti.com) or provided in conjunction with such TI products. TI's provision of these resources does not expand or otherwise alter TI's applicable warranties or warranty disclaimers for TI products.

Mailing Address: Texas Instruments, Post Office Box 655303, Dallas, Texas 75265
Copyright © 2021, Texas Instruments Incorporated