

PGAxxxEVM-037 Pressure Sensor Signal Conditioner Evaluation Module

The PGAxxxEVM-037 provides a platform to test the PGA902, PGA904, and PGA302 in the TSSOP package. The EVM comes shipped as the PGA902EVM-037, the PGA904EVM-037, or the PGA302EVM-037, with the name indicating the associated device included with the EVM. The PGA902EVM-037 and PGA904EVM-037 includes a TSSOP socket, and can be used interchangeably for all three devices. This user's guide describes both the EVM hardware platform, and the graphical user interface (GUI) software used to configure and calibrate the PGAxxx pressure devices.

Contents

1	Introduction	2
2	Default Configuration	5
3	EVM Setup and Operation.....	5
	3.1 Quick Start Procedure.....	5
	3.2 VDD Voltage Setup.....	7
	3.3 Pressure Inputs	7
	3.4 Temperature Inputs.....	9
	3.5 Voltage Output.....	10
4	Software	10
	4.1 Installation	10
	4.2 GUI Navigation	10
	4.3 EVM Settings Page	12
	4.4 General Settings Page.....	13
	4.5 Analog Front End Page.....	15
	4.6 Output DAC Page	17
	4.7 Diagnostics Page.....	18
	4.8 SENT Interface Page (PGA 904 Only)	19
	4.9 Memory Map Page.....	20
	4.10 Test Mode Page	22
	4.11 Memory Program Page.....	23
	4.12 PGA302 Linearity Calibration Page (PGA302 Only).....	24
	4.13 PGA302 EEPROM Settings Page (PGA302 Only)	26
	4.14 Data Monitor Page	28
	4.15 Tool Panel.....	29
5	Board Layout.....	35
6	Schematic and Bill of Materials.....	39
	6.1 Schematic	39
	6.2 Bill of Materials	42

List of Figures

1	PGA302EVM-037 Top Board Sections	3
2	PGA302EVM-037 EVM Bottom Board Sections.....	4
3	EVM Quick Start Setup	6
4	EVM GUI Connection Status.....	6
5	VDD Voltage Adjustment Potentiometer.....	7
6	Schematic of Resistive Bridge Emulator.....	8

7	External Bridge Connections	9
8	GUI Sections.....	11
9	EVM Settings Page	12
10	General Settings Page	14
11	Analog Front End Page	16
12	Output DAC Page	18
13	Diagnostics Page.....	18
14	SENT Interface Page	19
15	Memory Map Page.....	21
16	Test Mode Page.....	22
17	Memory Program Page.....	23
18	PGA302 Linearity Calibration Page.....	24
19	PGA302 EEPROM Settings Page	26
20	Data Monitor Page	28
21	Tool Panel.....	29
22	UTILITIES tab.....	30
23	Data Log Tab	31
24	Voltage Monitor Tab	32
25	Fault Status tab.....	33
26	Resistive Bridge Configuration Panel.....	34
27	Top Layer	35
28	Top Component Placement.....	36
29	Bottom Layer.....	37
30	Bottom Component Placement.....	38
31	PGA302EVM Schematic	40
32	PGAxxxEVM MSP430 Interface Schematic	41

List of Tables

1	Default Jumper Settings	5
2	Additional Jumper Settings Description.....	5
3	Jumper Settings to Connect Resistive Bridge to Temperature Inputs	10
4	EVM Status Possibilities	13
5	EVM Status Field Descriptions	13
6	Fault Status Indicators.....	33
7	Bill of Materials	42

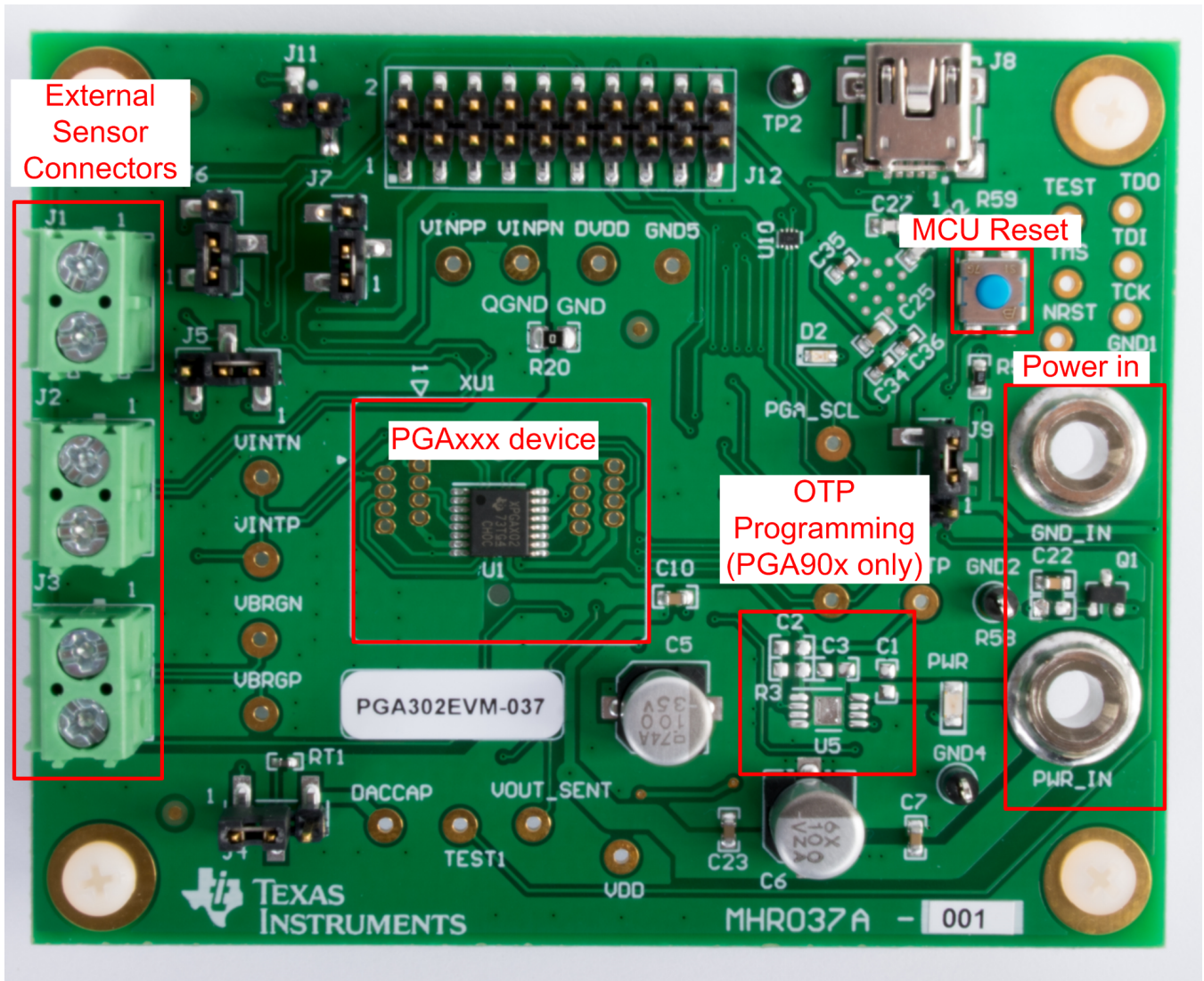
Trademarks

Microsoft, Windows are registered trademarks of Microsoft Corporation.
All other trademarks are the property of their respective owners.

1 Introduction

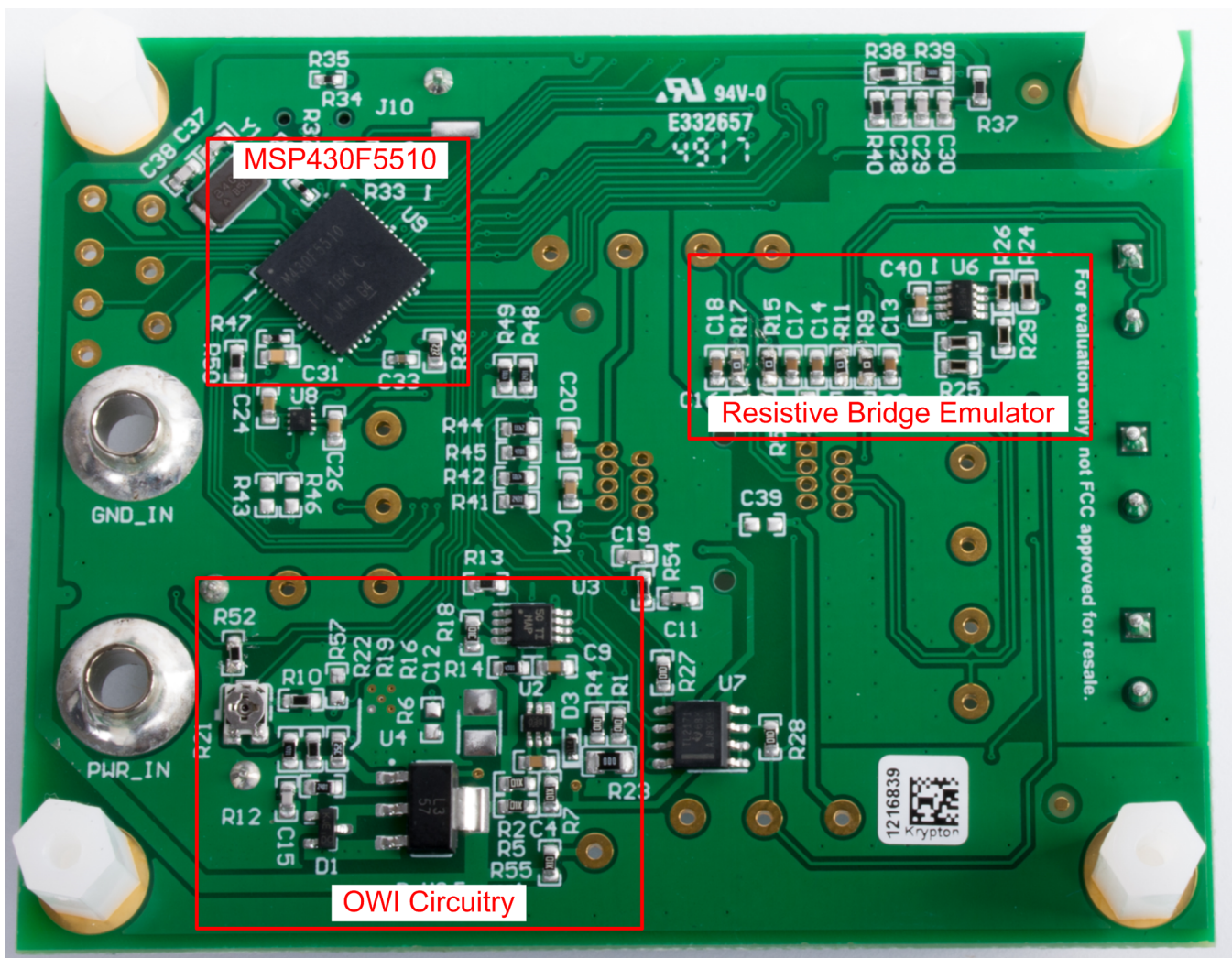
The PGAxxxEVM-037 is a fully-assembled evaluation module (EVM) designed to provide evaluation of the PGA902, PGA904, and PGA302 pressure sensor signal conditioner ICs. The user is able to configure the EVM by using any of the available digital interfaces (I2C, OWI, and SENT) depending on which device and EVM are being used. For ease of use, the most basic evaluation can be completed with only the PGAxxxEVM-037, a voltage supply capable of at least 7-V output, and a Microsoft® Windows® PC with the PGAxxxEVM GUI installed.

Temperature and pressure inputs can be simulated by the onboard *Resistive Bridge Emulator* (see [Section 4.15.5](#)), or the user can connect external temperature and pressure sensors to evaluate their performance in conjunction with the PGAxxx device.



Copyright © 2017, Texas Instruments Incorporated

Figure 1. PGA302EVM-037 Top Board Sections



Copyright © 2017, Texas Instruments Incorporated

Figure 2. PGA302EVM-037 EVM Bottom Board Sections

The PGAXxxxEVM-037 is divided into the following sections:

1. Power
 - a. External power connectors
 - b. Onboard regulators
2. OWI Communication
3. MSPR430F5510 Microcontroller
4. External resistive bridge interface
5. Resistive bridge emulator
6. Programming circuitry

NOTE: Pictured is a PGA302EVM-037 which does not include additional circuitry for firmware programming and SENT communication that is present on the PGA90xEVM-037. The PGA90xEVM-037 also includes a socket instead of a soldered down device.

2 Default Configuration

The EVM requires a 7-V to 28-V input applied to PWR_IN and GND_IN. The power supply should be current limited to 100 mA. The default jumper settings connect the resistive bridge emulator to the VBRG outputs and to the VINP inputs of the PGxxx device and are described in full in [Table 1](#).

Table 1. Default Jumper Settings

Jumper	Setting	Function
J4	Pins 1-2 Closed	Connect VINTP to RT1 10-kΩ thermistor
J5	Pins 1-2 Closed	Connect top of resistive bridge emulator to VBRGP
J6	Pins 1-2 Closed	Connect resistive bridge emulator output to VINPP
J7	Pins 1-2 Closed	Connect resistive bridge emulator output to VINPN
J9	Pins 2-3 Closed	Power 3.3-V LDO from VCC
J11	Open	Disconnect SENT output

Table 2. Additional Jumper Settings Description

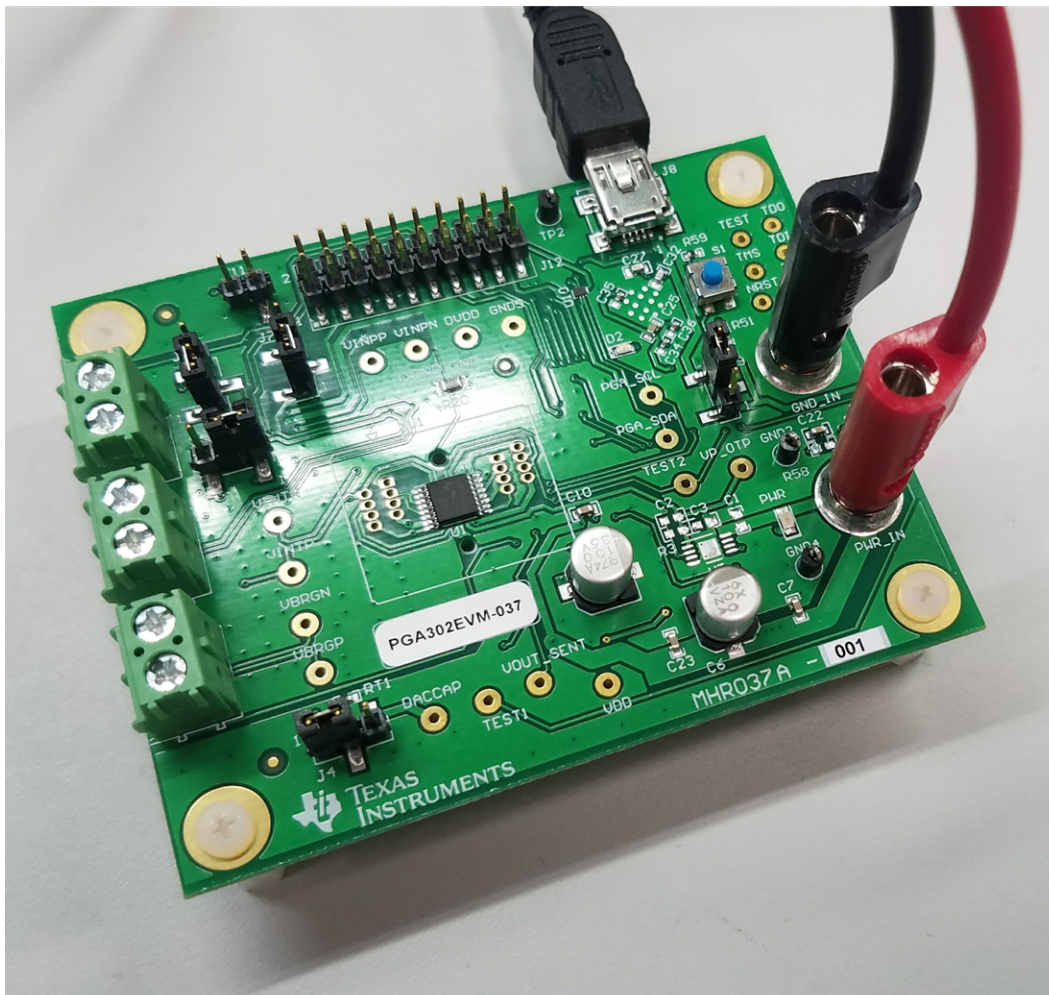
Jumper	Setting	Function
J4	Pins 2-3 closed	Connect DAC_CAP to RT1 10-kΩ thermistor
J5	Pins 2-3 closed	Connect top of resistive bridge emulator to TEST1
	Open	Connect VBRGP to J3 pin 1
J6	Pins 2-3 closed	Connect resistive bridge emulator output to VINTP
	Open	Connect VINPP to J2 pin 1
J7	Pins 2-3 Closed	Connect resistive bridge emulator output to VINTN
	Open	Connect VINPN to J2 pin 2
J9	Pins 1-2 Closed	Power 3.3-V LDO from USB VBUS
J11	Closed	Connect SENT output

3 EVM Setup and Operation

3.1 Quick Start Procedure

The PGxxxEVM-037 is designed to be ready for immediate evaluation out of the box with the onboard resistive bridge emulator as a simulation of a pressure sensor input. The following procedure details the steps necessary to begin evaluation with the PGxxxEVM-037 and the PGxxx EVM GUI.

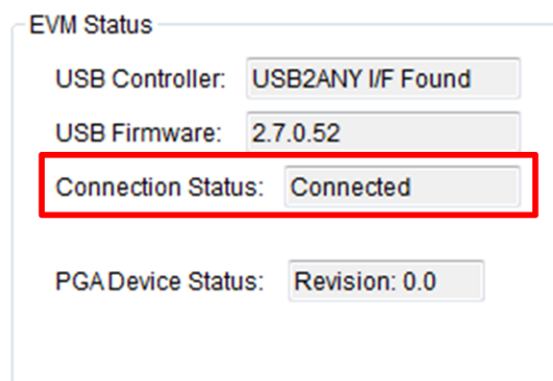
- Collect the following supplies:
 - PGxxxEVM-037
 - PC running Windows 7 or later
 - Micro-USB to USB cable
 - A single power supply unit, battery, or AC/DC adapter to provide a voltage output from 7 V to 28 V and a current output of up to 100 mA.
- Follow the instructions in the *Installation* section (see [Section 4.1](#)) of the User's Guide to install and run the PGxxx EVM GUI.
- With the power supply off, connect the positive output of the supply to the PWR_IN connector on the EVM, and the power supply ground to the GND_IN connector. Only turn on the power supply output after connecting to the EVM.
- Plug the micro-USB cable into the USB port on the EVM, and the USB side of the cable into the PC. The EVM setup should look similar to the one shown in [Figure 3](#).



Copyright © 2017, Texas Instruments Incorporated

Figure 3. EVM Quick Start Setup

5. Navigate to the GUI installation directory to run the PGAxXX EVM GUI.
6. Verify that communication has been established between the EVM and the GUI by checking the *EVM Status* section in the main panel, or in the status bar on the bottom left of the GUI as shown in [Figure 4](#).

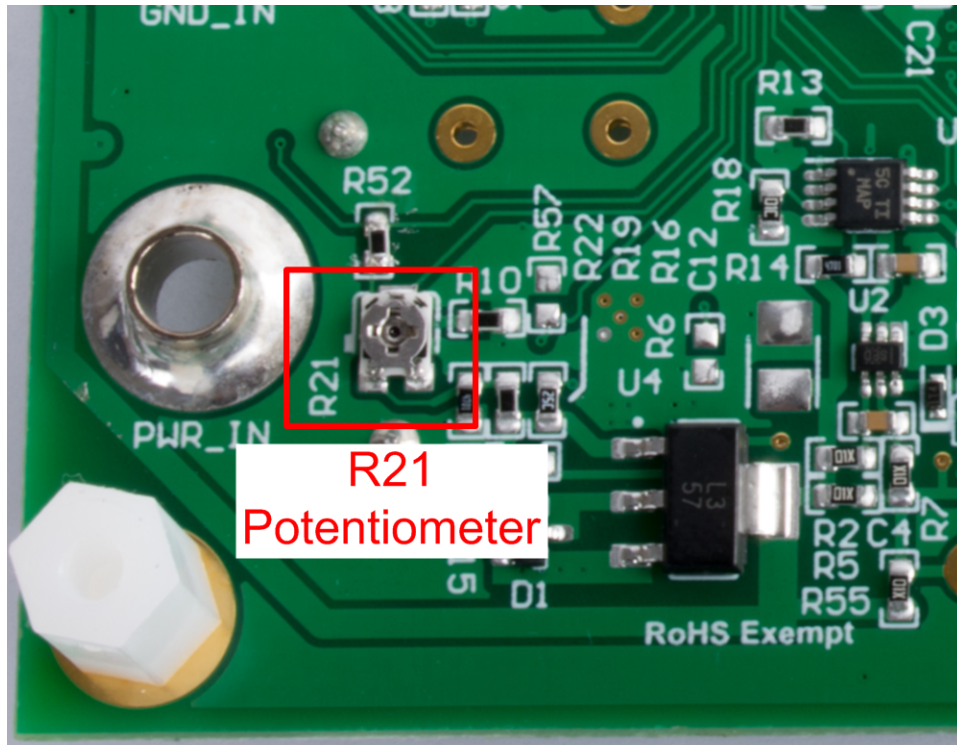


Copyright © 2017, Texas Instruments Incorporated

Figure 4. EVM GUI Connection Status

3.2 VDD Voltage Setup

The OWI circuitry can be sensitive to component variances and loading. To ensure proper voltage levels, a 10-k Ω potentiometer (R21) must be adjusted by the user. The potentiometer is located on the bottom of the board (pictured in Figure 5) and should be adjusted while the PGxxxEVM-037 is powered up first by pulling the OWI_5P5 pin high with the *EVM Pin State* controls in the GUI (see Section 4.3.2), then by monitoring the voltage on the VDD test point or with the *Voltage Monitor* tab (see section Section 4.15.3) and turning the potentiometer until VDD is between 4.5 V and 5.5 V.



Copyright © 2017, Texas Instruments Incorporated

Figure 5. VDD Voltage Adjustment Potentiometer

3.3 Pressure Inputs

The PGxxxEVM-037 includes a resistive bridge emulator designed to simulate a typical 5-k Ω pressure sensor topology. The variable leg consists of a digital potentiometer in parallel with a 2.61-k Ω resistor, and the parallel components are in series with a 2.55-k Ω resistor as shown in Figure 6.

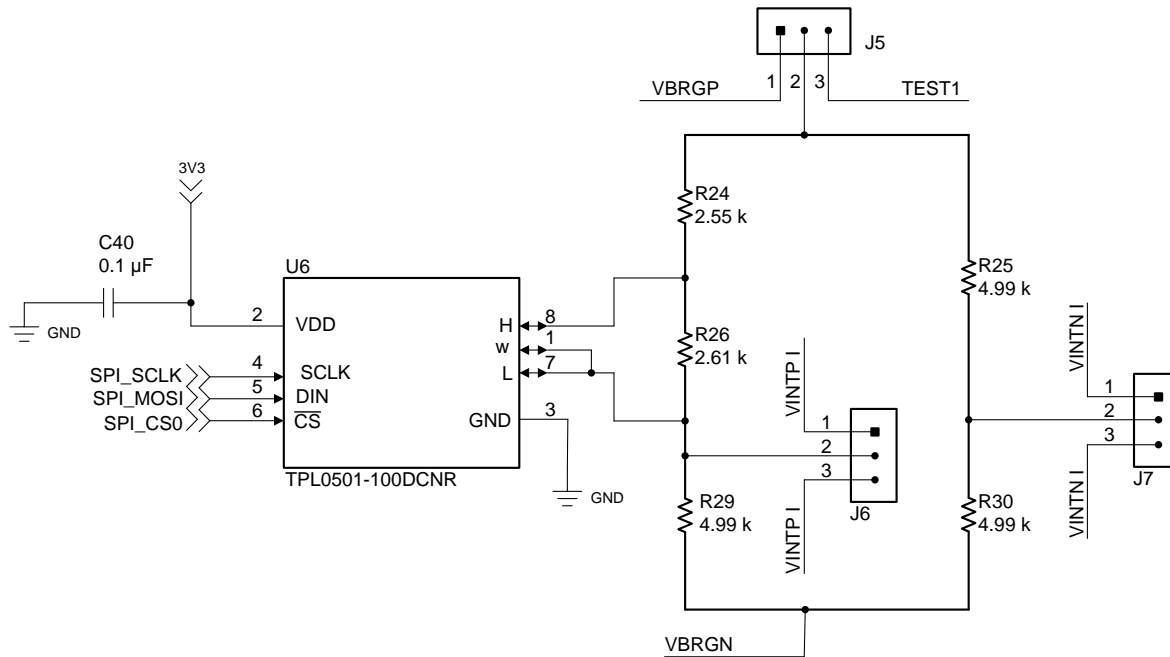
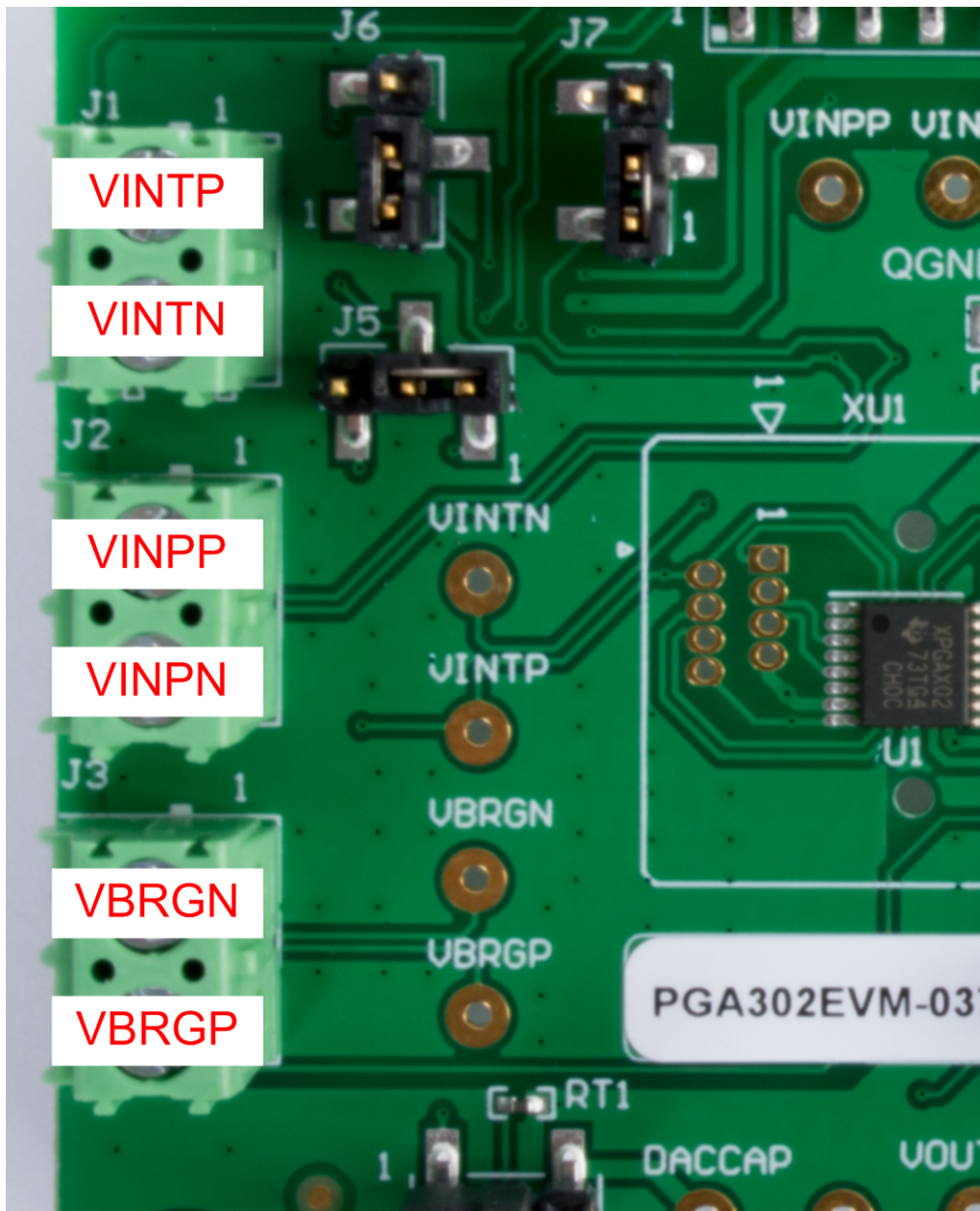


Figure 6. Schematic of Resistive Bridge Emulator

The default configuration of the EVM connects the PGxxx to the resistive bridge emulator with VBRGP and VBRGN supplying voltage, while VINPP and VINPN are connected to measure the differential voltage across the legs of the bridge. To use an external bridge or pressure sensor, remove the jumpers J5, J6, and J7. Next, connect the positive bridge voltage to J3 pin 1 (VBRGP) and the negative terminal of the bridge to J3 pin 2 (VBRGN). The differential voltage outputs of the bridge can be connected to J2, with pin 1 being VINPP and pin 2 being VINPN, as shown in [Figure 7](#).



Copyright © 2017, Texas Instruments Incorporated

Figure 7. External Bridge Connections

3.4 Temperature Inputs

The external temperature sensor inputs can be connected to either the resistive bridge emulator, or to an external temperature sensor. By default, the EVM is configured with the external temperature sensor inputs, VINTP and VINTN, disconnected from the resistive bridge emulator, but accessible via J1 with pin 1 being VINTP and pin 2 being VINTN. To use the resistive bridge emulator to test the external temperature sensor measurement, place the jumpers as described in [Table 3](#).

Table 3. Jumper Settings to Connect Resistive Bridge to Temperature Inputs

Jumper	Setting	Function
J5	Open	Disconnect VBRGP from resistive bridge emulator
J6	Pins 2-3 closed	Connect resistive bridge emulator output to VINTP
J7	Pins 2-3 closed	Connect resistive bridge emulator output to VINTN

NOTE: This configuration connects an adjustable 10-k Ω resistance between VINTP and VINTN as a test mode. It is not intended for use as a functioning external temperature sensor

3.5 Voltage Output

The PGxxx devices can output measured pressure and temperature values in analog voltage form via the 14-bit output DAC. On the PGxxxEVM-037 this VOUT voltage can be measured externally at the VOUT_SENT test point or through the GUI, which makes use of the internal ADC of the MSP430 to measure the voltage and display it on the *Voltage Monitor* tab of the GUI.

4 Software

4.1 Installation

Download and install the GUI from www.ti.com. Navigate to the default installation path of the executable file by clicking on the *Windows Start* button. Click on *All Programs* and then navigate to the Texas Instruments folder to find the PGxxxGUI application shortcut.

4.2 GUI Navigation

The GUI is comprised of three main sections: the menu tree, the main control panel, and the tool panel as [Figure 8](#) shows. All PGA device settings will be adjusted through the main control panel, which can be changed to display different groups of settings via the menu tree. The following sections describe the settings available in each item in the menu tree.

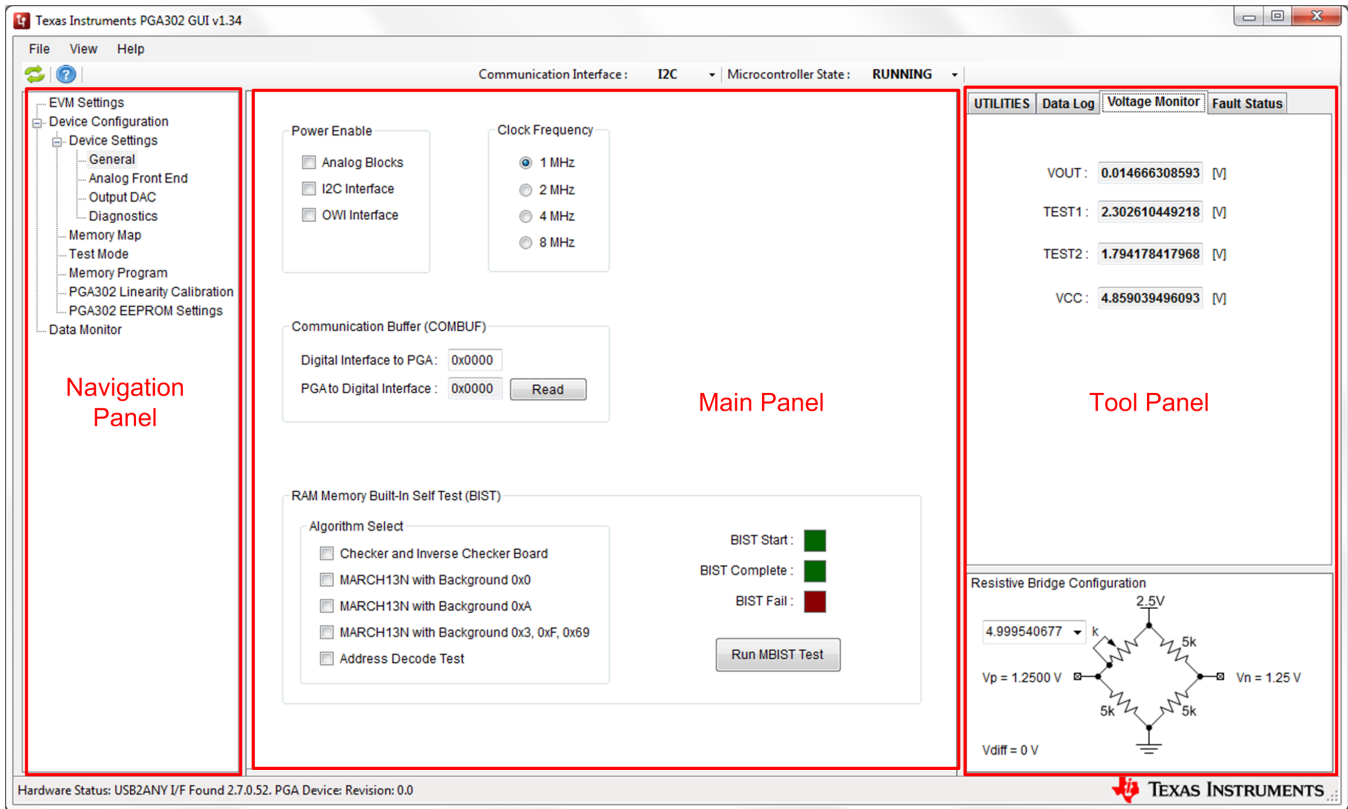


Figure 8. GUI Sections

4.3 EVM Settings Page



EVM Status

USB Controller:

USB Firmware:

Connection Status:

PGADevice Status:

EVM Pin State

VP_OTP_EN:

OWI_TX:

OWI_ACT:

OWI_5P5:

OWI Settings

OWI Baud Rate: bps

Stop Bits : bit

I2C Settings

I2C Frequency: kHz

Copyright © 2017, Texas Instruments Incorporated

Figure 9. EVM Settings Page

4.3.1 EVM Status

The GUI can automatically detect the presence of the PGAXxxEVM. In the event of a successful or failed connection between the PC, MSP430F5510, and PGAXxxEVM-037, the EVM status fields are updated according to [Table 4](#).

Table 4. EVM Status Possibilities

EVM Status	Success	Failure
USB Controller	USB2ANY I/F Found	Not Detected
USB Firmware	2.7.0.52	N/A
Connection Status	Connected	N/A
PGA Device Status	Revision 0.0	Not available

Table 5. EVM Status Field Descriptions

EVM Status	Definition
USB Controller	The MSP430F5510 is programmed with TI's USB2ANY host interface (I/F) controller firmware. The GUI calls API functions for the USB2ANY to execute. The USB2ANY I/F is the only compatible USB controller for the PGAxXXEVM GUI.
USB Firmware	The USB2ANY firmware can be updated for improvements or bug fixes. Version 2.7.0.52 is the only firmware version tested and known to be working for the PGAxXXEVM GUI.
Connection Status	Typically, only one USB2ANY is connected to a PC, though the USB2ANY APIs are able to distinguish multiple USB2ANY devices on the same USB bus. For a single USB2ANY I/F, the status will read Connected, but for multiple, the status will read Multiple Found. TI advises that a single USB2ANY I/F be connected to your PC during the evaluation of the PGAxXXEVM GUI.
PGA Device Status	When an I2C read command is successfully executed on the PGA device, the status will be updated to <i>Ready</i> . If the status reads back <i>Not available</i> , use the following checklist to troubleshoot: <ul style="list-style-type: none"> • Is the device seated properly in the socket (PGA902/904 only)? • Is the PGAxXX-037 EVM powered with a voltage of 7–28 V? • Is the power supply unit able to source at least 20 mA? • If the device was powered after the GUI was first initialized, click the application reset button to reconnect

4.3.2 EVM Pin State

The *EVM Pin State* is automatically updated when the GUI is started and connected to a PGAxXX device. Any of the available pins can be changed by the user to either HIGH, LOW, or HIZ states.

4.3.3 OWI Settings

The following OWI settings are available:

- **OWI Baud Rate:** Sets the baud rate for the OWI communication. The available options are 2400 bps or 4800 bps
- **Stop Bits:** Sets the number of stop bits for OWI communication. The available options are 1 or 2 stop bits.
- **Send VDD Activation Pulse:** Briefly raises the VDD voltage to 7 V to initiate OWI communication. This is used to test if the OWI circuitry is functioning properly.
- **Send Register Activation Command:** For the PGA90x devices without programmed firmware, a register activation command is sent to activate the OWI transceiver circuitry within the device.

4.3.4 I2C Settings

The I2C frequency selection allows the user to select 100 kHz, 400 kHz, and 800 kHz for I2C communication.

4.4 General Settings Page

Figure 10 shows the *General Settings Page* window.

Power Enable

Analog Blocks

I2C Interface

OWI Interface

Clock Frequency

1 MHz

2 MHz

4 MHz

8 MHz

Communication Buffer (COMBUF)

Digital Interface to PGA:

PGA to Digital Interface:

RAM Memory Built-In Self Test (BIST)

Algorithm Select

Checker and Inverse Checker Board

MARCH13N with Background 0x0

MARCH13N with Background 0xA

MARCH13N with Background 0x3, 0xF, 0x69

Address Decode Test

BIST Start: ■

BIST Complete: ■

BIST Fail: ■

Copyright © 2017, Texas Instruments Incorporated

Figure 10. General Settings Page

4.4.1 Power Enable

Power can be disabled to specific blocks within the PGAx_{xx} device to decrease total power consumption. The analog blocks, I2C communication, OWI communication, and SENT OUTPUT (PGA904 only) can all be individually enabled or disabled to save power.

4.4.2 Clock Frequency

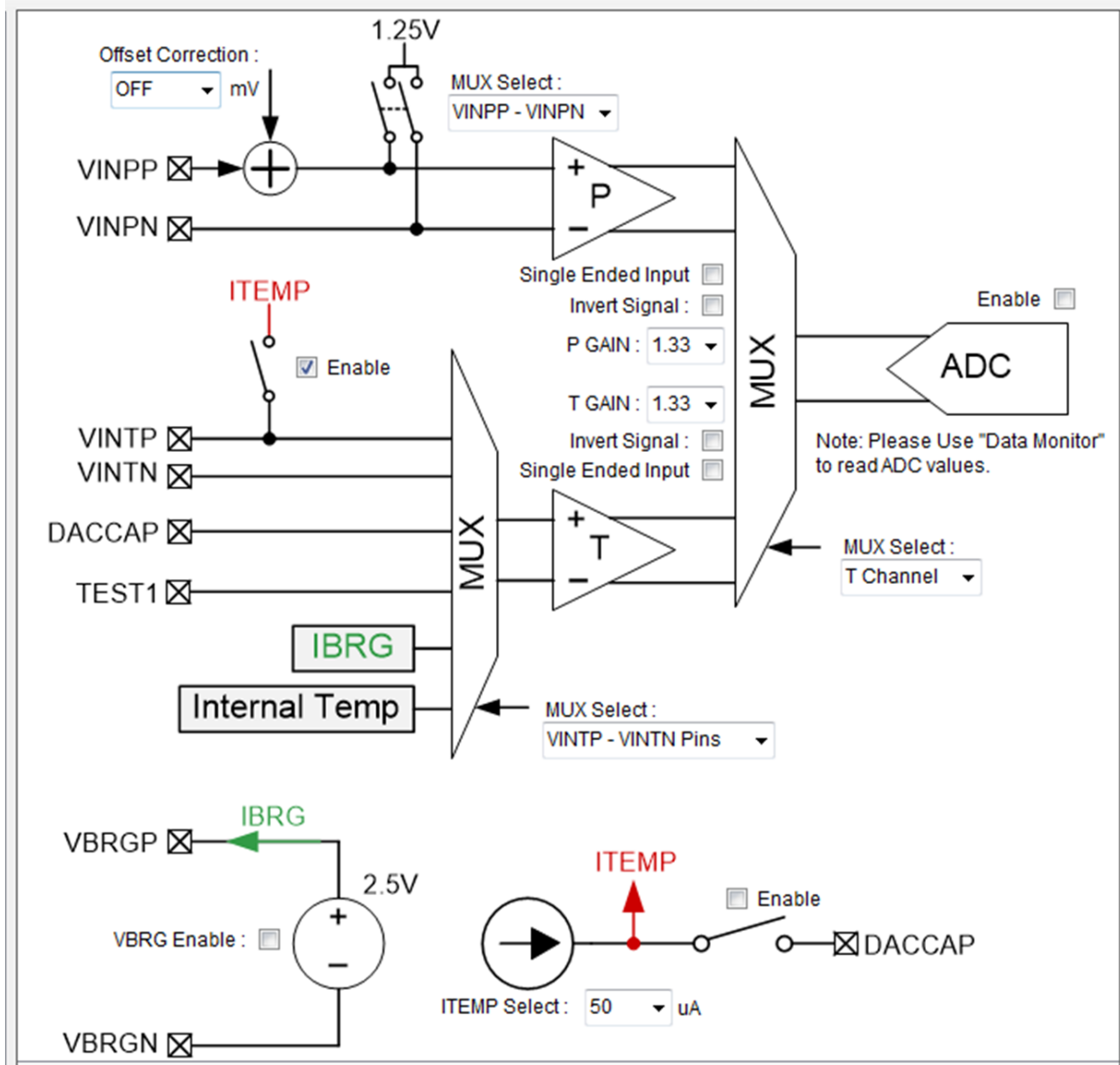
This section allows the user to control the clock frequency of the internal microcontroller.

4.4.3 RAM Memory Built-In Self Test

A RAM Memory Built-In self test is available to ensure the RAM of the PGxxx device is functioning properly. The user can select one or more algorithms to test the memory. Once the test is begun by clicking the *START* button, the GUI will initiate each selected test in turn, and will report once all tests are complete and if any of the tests were failed.

4.5 Analog Front End Page

The analog front end panel allows the user to configure the AFE portion of the PGxxx device in an easy-to-use block diagram format (shown in [Figure 11](#)) as an initial test and debug measure. These same settings are available in the *PGA302 EEPROM Settings* page (PGA302 EVM GUI only), however the settings made in the *Analog Front End* page will not carry over to the EEPROM settings page, and they must be repopulated in order to program the EEPROM for future use.



Copyright © 2017, Texas Instruments Incorporated

Figure 11. Analog Front End Page

4.5.1 Offset Correction

The offset correction setting allows the user to adjust the voltage offset of the pressure inputs to account for minor offset errors and to make full use of the input range of the integrated ADC of the PGxxx. Offset correction values from -54.75 mV to $+54.75$ mV are available, or the offset correction can be turned off entirely.

4.5.2 Input Signal MUX Select and Additional Settings

The MUX select setting allows the user to choose the input type of the signal connected to the VINPP and VINPN pins of the device. For a differential signal, select VINPP – VINPN, and for single-ended signals the user can choose either VINPP – 1.25 V, or 1.25 V – VINPN depending on which of the input pins the signal is connected to. The *Single Ended Input* box must also be selected if using a single-ended input signal. Additionally, the input signal can be inverted if desired by checking the *Invert Signal* box. The *Single Ended Input* and *Invert Signal* check boxes are available for both the P Gain and T Gain input blocks, and can be configured separately.

4.5.3 P Channel and T Channel

Both the P Channel and T Channel blocks have adjustable gains with a range of 1.33 V/V up to 200 V/V to properly amplify any input signal to take advantage of the full input range of the ADC.

4.5.4 P/T Channel Select

The *P/T Channel MUX Select* allows the user to determine which input signals are directed to the ADC of the PGAXxx device. In fixed-channel mode, either the P Channel or T Channel inputs can be directed to the ADC for sampling. The *Auto Scan* mode allows the ADC to sample from both the P Channel and the T Channel at user-defined intervals.

4.5.5 T Channel MUX Select

The T Channel MUX Select allows the user to determine which signals will be passed through the T Channel to the ADC for sampling. The VINTP and VINTN pin option can be selected for use with an external temperature sensor, or other sensor. To use the internal temperature sensor of the PGAXxx device, select the *Internal Temp Sense* option. The *Bridge Current* option allows the user to read the current through the internal VBRG voltage supply of the PGAXxx device. Additionally, the TEST1 pin can be MUXed through to monitor a variety of internal signals for debugging purposes. The output of the TEST1 pin can be set on the *Test Mode* page (see [Section 4.10](#)). Finally, the DACCAP pin can be used as an additional input if desired, and can be sent through the MUX to the ADC for sampling.

4.5.6 Block Enable Check Boxes

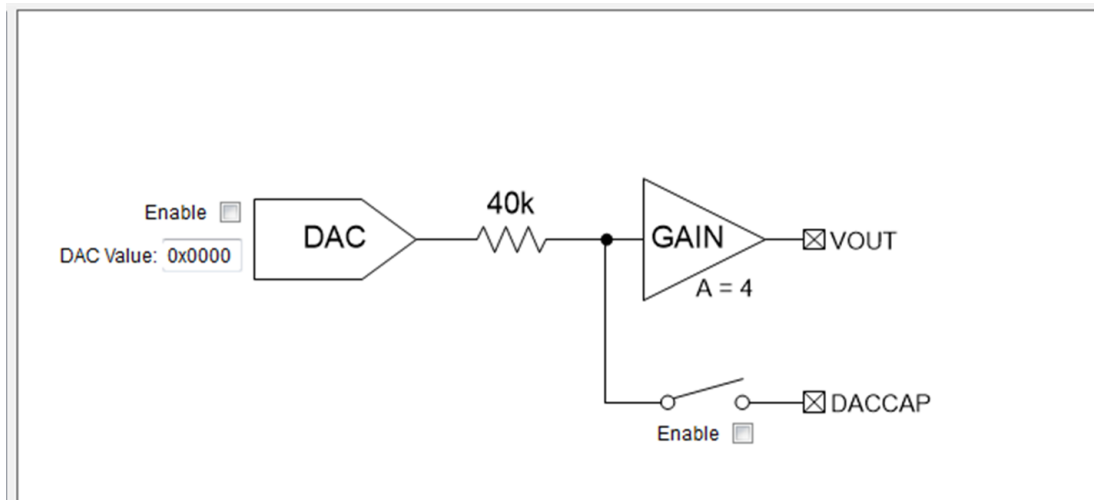
There are several block enable check boxes on the analog front end page. The ITEMP enable box will turn on and connect the internal temperature sensor current source for use with external temperature sensors that need current excitation. The VBRG enable box activates the internal bridge voltage supply to provide voltage excitation for resistive bridge pressure sensors. The ADC is enabled with a check box, and finally the DACCAP can be connected with an enable check box to provide a low-pass filter to the DAC output buffer.

4.5.7 ITEMP Select

ITEMP select gives the user the option to select the current output of the ITEMP internal current source. The current source can supply 50 to 1000 μ A, or it can be disabled with this control.

4.6 Output DAC Page

[Figure 12](#) illustrates the output DAC page.



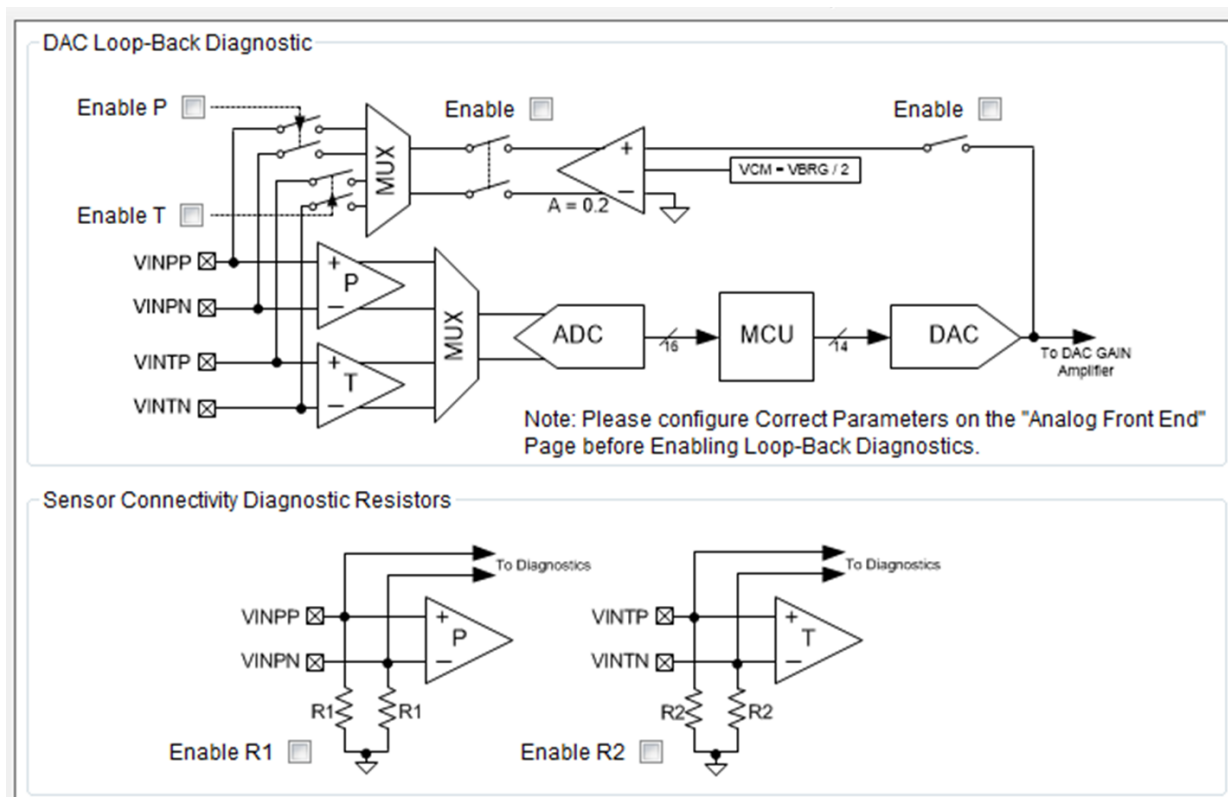
Copyright © 2017, Texas Instruments Incorporated

Figure 12. Output DAC Page

The *Output DAC* page allows the user to quickly test the functionality of the output DAC by inputting specific DAC Values and monitoring the result at the VOUT pin. The output DAC and DACCAP connections can also be enabled or disabled from this page. To easily read the voltage on VOUT, the user can use the *Voltage Monitor* tab on the tool panel to the right.

4.7 Diagnostics Page

Figure 13 shows the diagnostics page.



Copyright © 2017, Texas Instruments Incorporated

Figure 13. Diagnostics Page

4.7.1 DAC Loopback Diagnostics Section

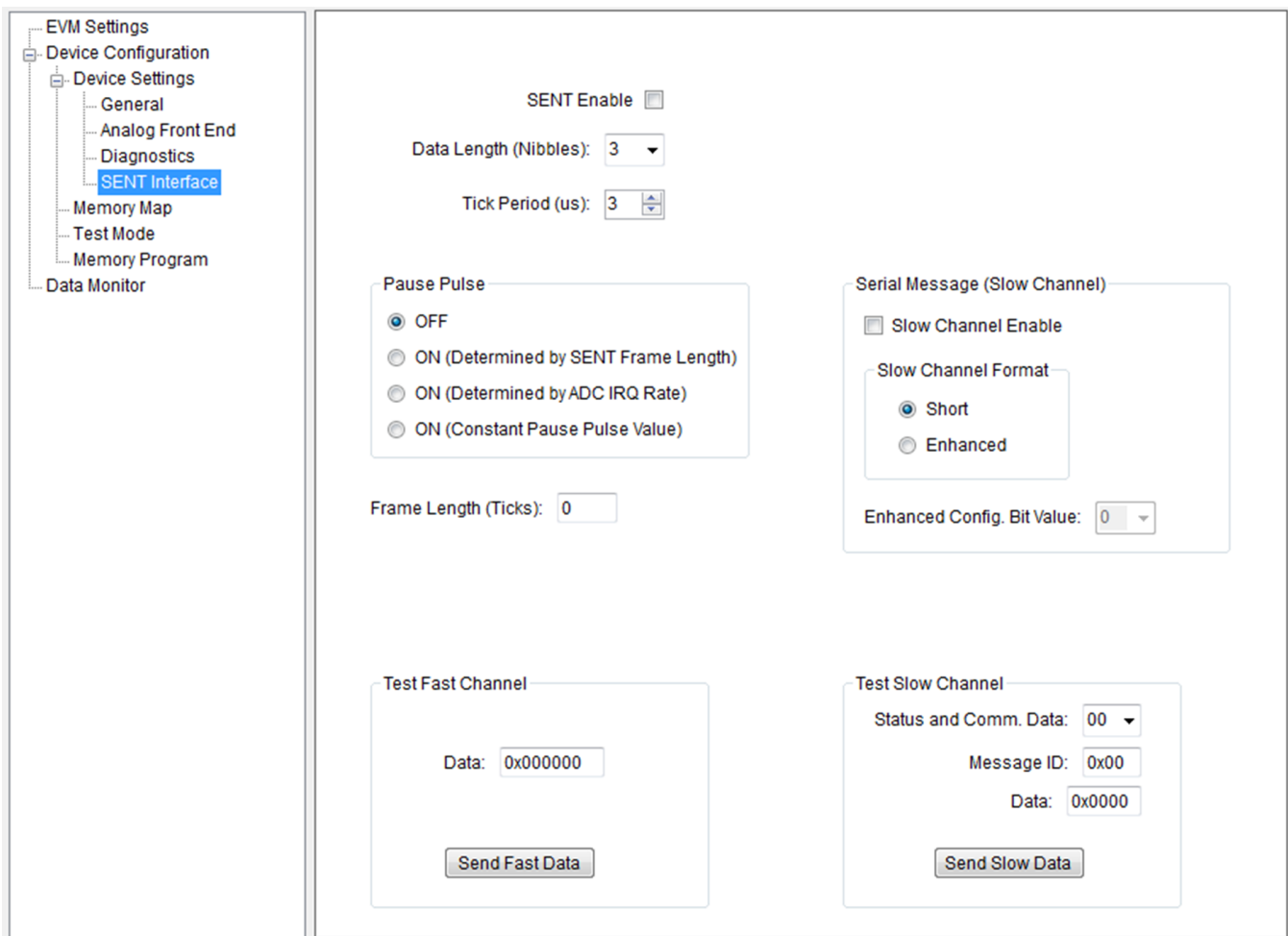
The *DAC Loopback Diagnostics* section allows the user to ensure proper signal chain operation by reading the DAC output through the ADC. With the feedback loop enabled, the user can set a DAC value, and then read the resulting ADC value on the *Data Monitor* page (see [Section 4.14](#)) to check for agreement.

4.7.2 Sensor Connectivity Diagnostic Resistors Section

The *Sensor Connectivity Diagnostic Resistors* section allows the user to enable the sensor diagnostic resistors to monitor short and open conditions on the sensor input pins. The output of these diagnostics is available in the *Fault Status* tab of the tool panel to the right under the AFE Diagnostics Section. Short and open conditions can be determined using the VINTP, VINTN, VINPP, and VINPN undervoltage and overvoltage fault status bits in combination with the internal pulldown resistors.

4.8 SENT Interface Page (PGA 904 Only)

The *SENT Interface* page (see [Figure 14](#)) allows the user to control SENT settings, and to test communication on both the fast and slow communication channels.



Copyright © 2017, Texas Instruments Incorporated

Figure 14. SENT Interface Page

Data length controls the number of fast data *Nibbles* (4 bits) that will be sent within each transmission, and the *Tick* period determines the overall speed of the data output.

The pause pulse at the end of each data transmission can be either disabled or turned on with three options for how the length of the pause pulse is determined.

The serial message, or slow channel communication can be enabled and configured. The slow channel data will be contained in small portions as part of the STATUS frame at the beginning of each transmission, when enabled. Short mode will send only 8 bits, while enhanced mode will allow the user to send 12 or 16 bits depending on the *Enhanced Config Bit* value (0b0 = 12 bits and 0b1 = 16 bits).

Both the fast- and slow-channel communication can be tested from the SENT interface page. Note that when a test signal is begun, it will continuously output the test data until the SENT interface is disabled.

4.9 **Memory Map Page**

The *Memory Map*, shown in [Figure 15](#), allows low-level access to all available registers in the PGAXxx device. Any changes made to the map on the left are not finalized until the user clicks either the *Write Selected* or *Write All* buttons to the right of the grid.

The user can save a grid or load a previously saved grid. Note that only the active tab will be saved to a file when saving a grid. The file created when saving the EEPROM tab grid is interchangeable with the file created when saving the EEPROM settings on the *Memory Program* page (see [Section 4.11](#)).

Control & Status
EEPROM
EEPROM Control

DI Page 0
DI Page 2
DI Page 7

ADDRESS / REGISTER NAME	REG	b7	b6	b5	b4	b3	b2	b1	b0
▶ 0x00 REVISION_ID [7:0]	00	0	0	0	0	0	0	0	0
0x01 REVISION_ID [11:8]	00	0	0	0	0	0	0	0	0
0x04 COM_MCU_TO_DIF_B1	00	0	0	0	0	0	0	0	0
0x05 COM_MCU_TO_DIF_B2	00	0	0	0	0	0	0	0	0
0x06 COM_TX_STATUS	00	0	0	0	0	0	0	0	0
0x08 COM_DIF_TO_MCU_B1	00	0	0	0	0	0	0	0	0
0x09 COM_DIF_TO_MCU_B2	00	0	0	0	0	0	0	0	0
0x0A COM_RX_STATUS	00	0	0	0	0	0	0	0	0
0x0B COM_RX_INT_ENABLE	00	0	0	0	0	0	0	0	0
0x0C MICRO_INTERFACE_CONTROL	00	0	0	0	0	0	0	0	0
0x0D SECLOCK	00	0	0	0	0	0	0	0	0
0x10 PADC_DATA[7:0]	00	0	0	0	0	0	0	0	0
0x11 PADC_DATA[15:8]	00	0	0	0	0	0	0	0	0
0x12 PADC_DATA[23:16]	00	0	0	0	0	0	0	0	0
0x13 PADC_DATA[31:24]	00	0	0	0	0	0	0	0	0
0x14 TADC_DATA[7:0]	00	0	0	0	0	0	0	0	0
0x15 TADC_DATA[15:8]	00	0	0	0	0	0	0	0	0
0x16 TADC_DATA[23:16]	00	0	0	0	0	0	0	0	0
0x17 TADC_DATA[31:24]	00	0	0	0	0	0	0	0	0
0x18 ADC_VALID	00	0	0	0	0	0	0	0	0
0x1C MCU_MON [7:0]	00	0	0	0	0	0	0	0	0
0x1D MCU_MON [15:8]	00	0	0	0	0	0	0	0	0
0x1E MCU_MON [23:16]	00	0	0	0	0	0	0	0	0
0x1F MCU_MON [31:24]	00	0	0	0	0	0	0	0	0

Copyright © 2017, Texas Instruments Incorporated

Figure 15. Memory Map Page

4.10 Test Mode Page

Analog Test Modes

Analog Output Test MUX Select: TEST1 Enable

Analog Input Test MUX Select: VINTP VINTN Enable

Note: The Analog Output Test MUX pin is TEST1, while the Analog Input Test MUX pins are VINTP and VINTN

Digital Test Modes

Digital Test Mode Enable

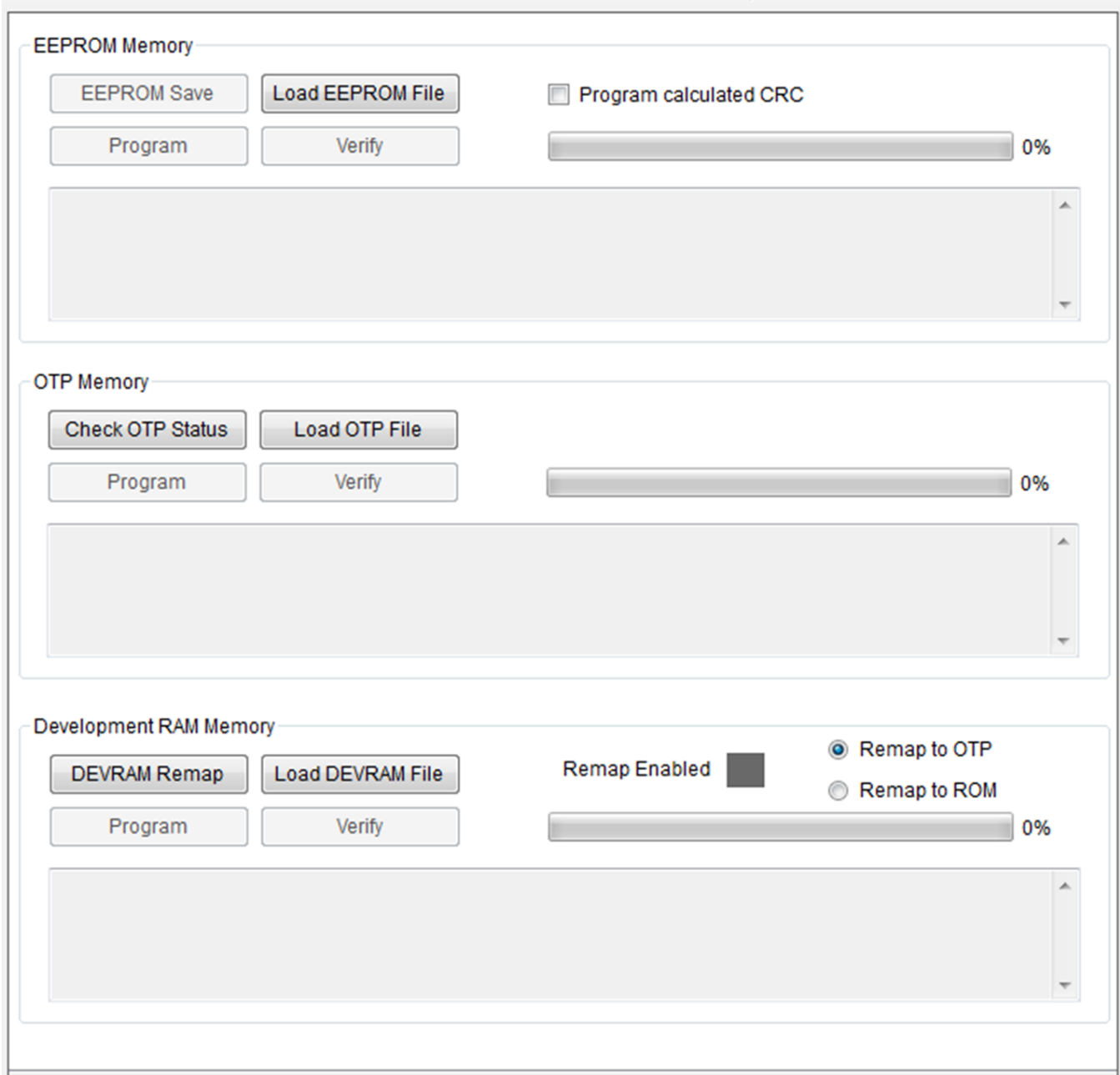
TEST1 Digital Output Test MUX Select:

Copyright © 2017, Texas Instruments Incorporated

Figure 16. Test Mode Page

The *Test Mode* page (see [Figure 16](#)) provides access to the analog and digital test MUX settings of the PGAx_{xx} device. The analog and digital test MUX outputs are output through the TEST1 pin, while the analog test MUX inputs are connected to the VINTP and VINTN pins. A variety of internal signals are accessible through these options for debugging purposes, but a full description of this functionality is outside the scope of this document.

4.11 Memory Program Page



Copyright © 2017, Texas Instruments Incorporated

Figure 17. Memory Program Page

For the EEPROM Memory, the user can load or save a memory map file as well as program the calculated CRC. It is a good practice to verify the EEPROM after each programming procedure. Note that the file loaded and saved on this page is interchangeable with the file that can be loaded or saved on the *Memory Map* page when viewing the EEPROM tab.

NOTE: The OTP Memory and Development RAM Memory sections are only available in the PGA902 and PGA904 EVM GUIs.

The Check OTP Status button allows the user to see if the OTP memory has already been burned on their PGAXxx device. An OTP file can be loaded and then programmed and verified in the OTP Memory Section.

When using the DEVRAM, the DEVRAM memory space must be remapped to the OTP memory so that the microcontroller operates from the correct memory. Select the *Remap to OTP* radio button, and click the *DEVRAM Remap* button before continuing. Once completed, a DEVRAM file can be loaded, programmed, and verified.

4.12 PGA302 Linearity Calibration Page (PGA302 Only)

Calibration Model : 4 Pressure, 4 Temperature ▾
VDD Supply Voltage : [V]

Target System Output

Pressure 1: Vout = [V]

Pressure 2: Vout = [V]

Pressure 3: Vout = [V]

Pressure 4: Vout = [V]

Desired VDD = [V]

System Output Calibration (DAC and DAC Gain)

DAC Code	Temp 1	Temp 2	Temp 3	Temp 4
1: 0x 0666	Vout 1: <input type="text"/>	<input type="text"/>	<input type="text"/>	<input type="text"/>
2: 0x 1777	Vout 2: <input type="text"/>	<input type="text"/>	<input type="text"/>	<input type="text"/>
3: 0x 2888	Vout 3: <input type="text"/>	<input type="text"/>	<input type="text"/>	<input type="text"/>
4: 0x 3999	Vout 4: <input type="text"/>	<input type="text"/>	<input type="text"/>	<input type="text"/>

System Input Calibration (Sensor, AFE and ADC)

	Temp 1	Temp 2	Temp 3	Temp 4
Pressure 1	0x <input type="text"/>	0x <input type="text"/>	0x <input type="text"/>	0x <input type="text"/>
Pressure 2	0x <input type="text"/>	0x <input type="text"/>	0x <input type="text"/>	0x <input type="text"/>
Pressure 3	0x <input type="text"/>	0x <input type="text"/>	0x <input type="text"/>	0x <input type="text"/>
Pressure 4	0x <input type="text"/>	0x <input type="text"/>	0x <input type="text"/>	0x <input type="text"/>
Temperature	0x <input type="text"/>	0x <input type="text"/>	0x <input type="text"/>	0x <input type="text"/>

Note:
 Press 1 < Press 2 < Press 3 < Press 4
 Temp1 < Temp2 < Temp3 < Temp4
 DAC 1 < DAC 2 < DAC 3 < DAC 4

Advanced Options

Average Samples : ▾

Full Data Manual Entry

START
Cancel

Message Center

Copyright © 2017, Texas Instruments Incorporated

Figure 18. PGA302 Linearity Calibration Page

One of the key features of the PGA302 pressure sensor signal conditioner is the preprogrammed firmware which includes linearization and temperature compensation algorithms to provide reliable results from a variety of pressure sensors in real world systems. To maximize the effectiveness of these algorithms, calibration of the PGA302 device for each sensor is critical. The PGA302 Linearity Calibration panel provides a simple interface to calibrate the input and output stages of the PGA302 device with minimal external equipment. The following example procedure will walk the user through the calibration process by using the onboard resistive bridge to simulate a pressure sensor.

4.12.1 PGA302 Linearity Calibration Procedure

1. Follow the *PGAxxxEVM-037 Quick Start Procedure* ([Section 3.1](#)) to power up the EVM and establish communication with the PGAxxx device. Make sure that the jumpers are set to their default position as shown in [Table 1](#).
2. Place the microcontroller in *Reset* by clicking the *Microcontroller State* field.
3. Select the *Calibration Model* you wish to use. For this example, select "3 Pressure, 1 Temperature"
4. Click *START* at the bottom of the page, and follow the prompts from the message center below the *START* button.
5. Update the desired output voltage for Pressure 1 and click *NEXT* when finished. Repeat this process for Pressure 2 through Pressure 4. In this case (3 Pressure, 1 Temperature), Pressure 3 is not accessible for updating.
6. Update the desired DAC Code for Pressure 1 and click *NEXT* when finished. Repeat this process for Pressures 2 and 4.
7. Click *NEXT* again. Check the value in the Vout 1 row under the column Temp 2. This value will be automatically populated with the Vout voltage output associated with the DAC code entered in the previous step. The voltage is measured by the ADC in the MSP430 microcontroller on the PGAxxxEVM-037. If you wish to verify the voltage with an external voltage meter, measure the voltage on the VOUT_SENT test point on the EVM. The voltage value can be left as is, or an updated value can be manually entered by the user. Once the value is set, click *NEXT*. Repeat this process for Vout 2, and Vout 4.
8. Before continuing, set the number of *Average Samples* to use in the *Advanced Settings* section of the page. This value can range from 1 to 128 and will average the number of samples selected to generate the ADC value populated in the calibration algorithm. Increasing the number of samples averaged will increase the amount of time it takes for the ADC value to populate. For this example, the default value of 8 will be selected.
9. Set the resistive bridge leg resistance to the desired value using the *Resistive Bridge Configuration* panel. For this example use "5.0850k" as the Pressure 1 value. Click *NEXT* when finished. The cell will be populated automatically with the value read by the ADC. If the value does not populate properly, or if the value does not seem correct, the *Data Monitor* page (see [Section 4.14](#)) can be used to help debug by reading the ADC values in real time. The value in the cell can be manually entered at any time by clicking the *Full Manual Data Entry* checkbox.
10. Set the resistive bridge leg resistance to the second pressure value. For this example, use "5.0806k". Once complete, click *NEXT* to populate the ADC value in the cell. Repeat this process for the third and final pressure point, using a resistive bridge leg resistance of "5.0713k".
11. After completing the pressure readings, click *NEXT* to populate the temperature cell. The cell will be automatically populated with the ADC value read from the internal temperature sensor of the PGA302. Click *NEXT* again.
12. The *VDD Supply Voltage* field will now be automatically populated with the value measured by the ADC of the MSP430. If desired, the *VDD Supply Voltage* can be measured externally from the test point labeled *VDD* on the EVM, and entered manually into the calibration page. Click *NEXT* again.
13. Now the desired *VDD Supply Voltage* field will be populated. Click *NEXT* again.
14. Click *CALCULATE*. This will use the data generated through the calibration procedure to calculate the coefficient values for linearity and temperature compensation and display them in the message center at the bottom of the page. Click *PROGRAM* to program the values to the EEPROM.
15. Navigate to the *PGA302 EEPROM Settings* page to verify the coefficients have been populated in the *Linearity Calibration Parameters* section of the page. While on this page, click the *UPDATE* button to correct the EEPROM CRC value. The PGA302 device is now fully calibrated.

16. To test the results of the calibration click the *Microcontroller State* field to begin running the microcontroller, and navigate to the *Voltage Monitor* tab in the tool panel.
17. Select the second pressure point in the *Resistive Bridge Configuration* panel, by setting the resistance of the leg to "5.0806k". The VOUT voltage in the tool panel should match the voltage selected for the Pressure 2 output during the calibration procedure.

4.13 PGA302 EEPROM Settings Page (PGA302 Only)

Figure 19 illustrates the PGA302 EEPROM settings page.

Linearity Calibration Parameters

H0 : 0x <input type="text" value="0000"/>	G0 : 0x <input type="text" value="0000"/>	N0 : 0x <input type="text" value="0000"/>	M0 : 0x <input type="text" value="0000"/>	PADC GAIN : 0x <input type="text" value="00"/>	Algorithm Type: <input type="text" value="Normal"/>
H1 : 0x <input type="text" value="0000"/>	G1 : 0x <input type="text" value="0000"/>	N1 : 0x <input type="text" value="0000"/>	M1 : 0x <input type="text" value="0000"/>	TADC GAIN : 0x <input type="text" value="00"/>	
H2 : 0x <input type="text" value="0000"/>	G2 : 0x <input type="text" value="0000"/>	N2 : 0x <input type="text" value="0000"/>	M2 : 0x <input type="text" value="0000"/>	PADC OFF : 0x <input type="text" value="0000"/>	
H3 : 0x <input type="text" value="0000"/>	G3 : 0x <input type="text" value="0000"/>	N3 : 0x <input type="text" value="0000"/>	M3 : 0x <input type="text" value="0000"/>	TADC OFF : 0x <input type="text" value="0000"/>	

Analog Front End Settings

<p>P Channel Input</p> <p>Single Ended Input : <input type="checkbox"/></p> <p>Invert Signal : <input type="checkbox"/></p> <p>P GAIN : <input type="text" value="1.33"/></p> <p>P MUX : <input type="text" value="VINPP - VINPN"/></p> <p>Offset Corr : <input type="text" value="OFF"/> mV</p>	<p>T Channel Input</p> <p>Single Ended Input : <input type="checkbox"/></p> <p>Invert Signal : <input type="checkbox"/></p> <p>T GAIN : <input type="text" value="1.33"/></p> <p>T MUX : <input type="text" value="VINTP - VINTN Pins"/></p>	<p>T Channel Current Drive</p> <p>ITEMP Select : <input type="text" value="50"/> uA</p> <p>Destination : <input type="text" value="VINTP"/></p>
---	---	--

DAC Output Settings

DAC Level During Diagnostic Fault : 0x <input type="text" value="00"/> <input type="text" value="00"/>	DACCAP Pin Enable : <input type="checkbox"/>
Normal Output Range High Limit : 0x <input type="text" value="0000"/>	Output High Clamp Limit : 0x <input type="text" value="0000"/>
Normal Output Range Low Limit : 0x <input type="text" value="0000"/>	Output Low Clamp Limit : 0x <input type="text" value="0000"/>

<p>Diagnostics Enable</p> <table style="width: 100%;"> <tr> <td>VINP_OV : <input type="checkbox"/></td> <td>PGAIN_OV : <input type="checkbox"/></td> </tr> <tr> <td>VINP_UV : <input type="checkbox"/></td> <td>PGAIN_UV : <input type="checkbox"/></td> </tr> <tr> <td>VINT_OV : <input type="checkbox"/></td> <td>TGAIN_OV : <input type="checkbox"/></td> </tr> <tr> <td>VINT_UV : <input type="checkbox"/></td> <td>TGAIN_UV : <input type="checkbox"/></td> </tr> </table>	VINP_OV : <input type="checkbox"/>	PGAIN_OV : <input type="checkbox"/>	VINP_UV : <input type="checkbox"/>	PGAIN_UV : <input type="checkbox"/>	VINT_OV : <input type="checkbox"/>	TGAIN_OV : <input type="checkbox"/>	VINT_UV : <input type="checkbox"/>	TGAIN_UV : <input type="checkbox"/>	<p>EEPROM Lock : <input type="checkbox"/></p> <p>Diagnostics Global Enable : <input type="checkbox"/></p> <p>Production Serial Number : 0x <input type="text" value="00000000"/></p> <p>Output IIR Filter Cut-Off : <input type="text" value="OFF"/> [Hz]</p> <p>Correct EEPROM CRC : <input type="button" value="Update"/></p>
VINP_OV : <input type="checkbox"/>	PGAIN_OV : <input type="checkbox"/>								
VINP_UV : <input type="checkbox"/>	PGAIN_UV : <input type="checkbox"/>								
VINT_OV : <input type="checkbox"/>	TGAIN_OV : <input type="checkbox"/>								
VINT_UV : <input type="checkbox"/>	TGAIN_UV : <input type="checkbox"/>								

Note: When Updating Text Box Parameters, press the "Enter" key to program changes.

Copyright © 2017, Texas Instruments Incorporated

Figure 19. PGA302 EEPROM Settings Page

When making changes to any parameters on the PGA302 EEPROM settings page, the new settings are automatically burned to the EEPROM. No separate programming action is required. However, it is necessary to update the CRC once any of the EEPROM settings have been changed, including at the end of a calibration procedure.

4.13.1 Linearity Calibration Parameters

The linearity calibration parameters are automatically set once the *Linearity Calibration Procedure* (see [Section 4.12.1](#)) has been completed. No user input is necessary; however, individual coefficients can be changed manually if desired.

4.13.2 Analog Front End Settings

The *Analog Front End Settings* are the same as those included in the *Analog Front End* block diagram panel. To program the settings in the EEPROM, they must be entered in the *PGA302 EEPROM Settings* panel. For a full description of the Analog Front End Settings, see [Section 4.5](#).

4.13.3 DAC Output Settings

The DAC Output Settings allow the user to configure the DAC output ranges as well as the DAC output level during a fault.

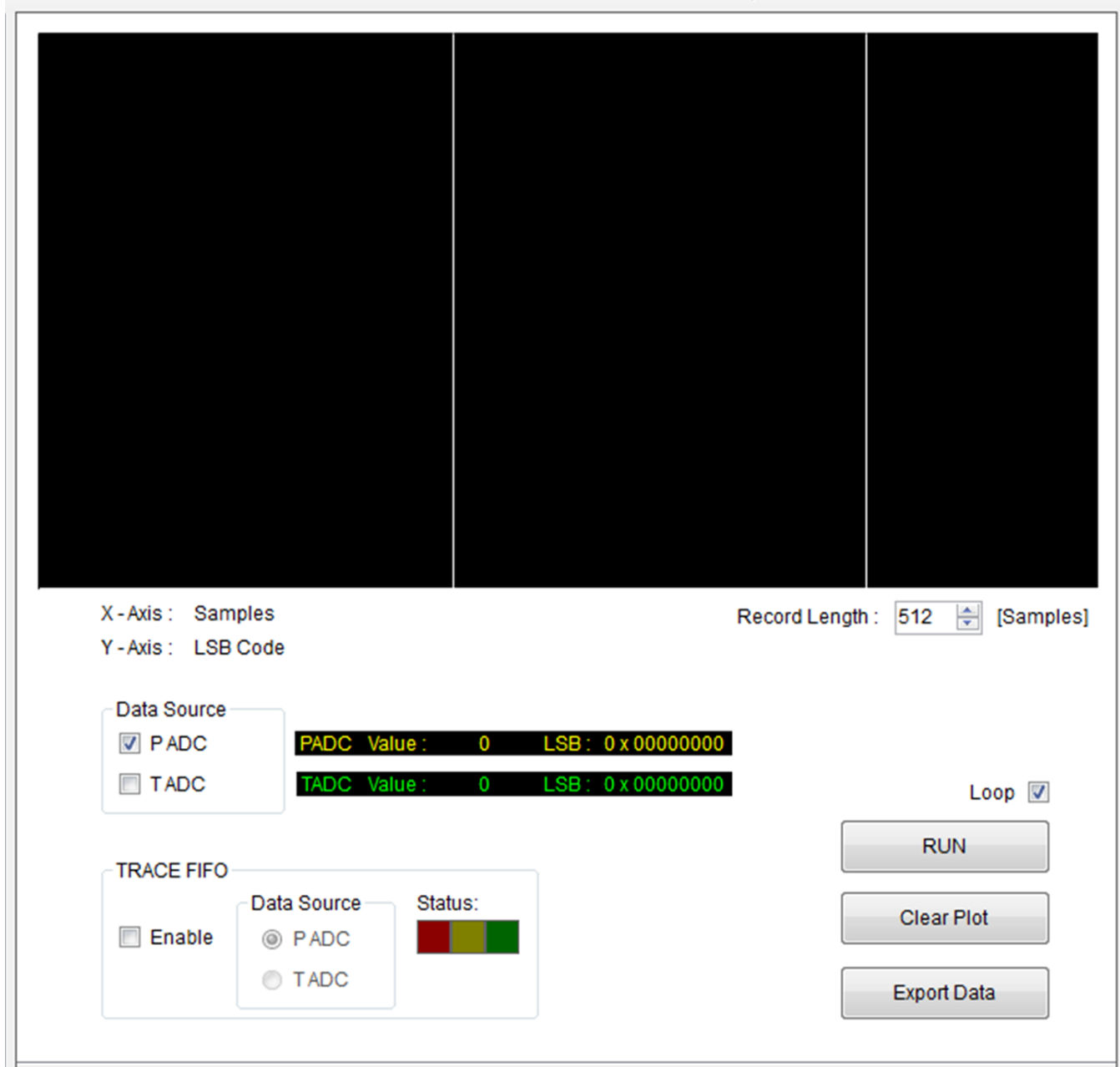
4.13.4 Diagnostics Enable

Allows the user to enable analog front end diagnostic bits to be viewed in the *Fault Status* tab. See [Table 6](#) for a description of diagnostic bits.

4.13.5 Other Settings

Other settings on this page include locking the EEPROM so that the values cannot be changed, enabling all diagnostics with a single check box, viewing the production serial number of the PGA302 device (read only), or setting the *IIR Filter Cutoff* frequency.

4.14 Data Monitor Page



Copyright © 2017, Texas Instruments Incorporated

Figure 20. Data Monitor Page

The *Data Monitor* page (see [Figure 20](#)) allows you to see the ADC sample values being read in real time. Data can be read from the P Channel, the T Channel, or both on the same graph. The number of samples recorded can be adjusted from 128 to 4096. By default, the graph will continually loop until it is stopped by the user, but by unchecking the *Loop* checkbox the samples will stop when the record length is reached.

Data can be exported to a .txt file format by clicking the *Export Data* button. The file contains all of the data currently displayed in the plot in a comma separated value format with the sample number, the P channel value, and the T channel value for each sample for easy data manipulation.

4.15 Tool Panel

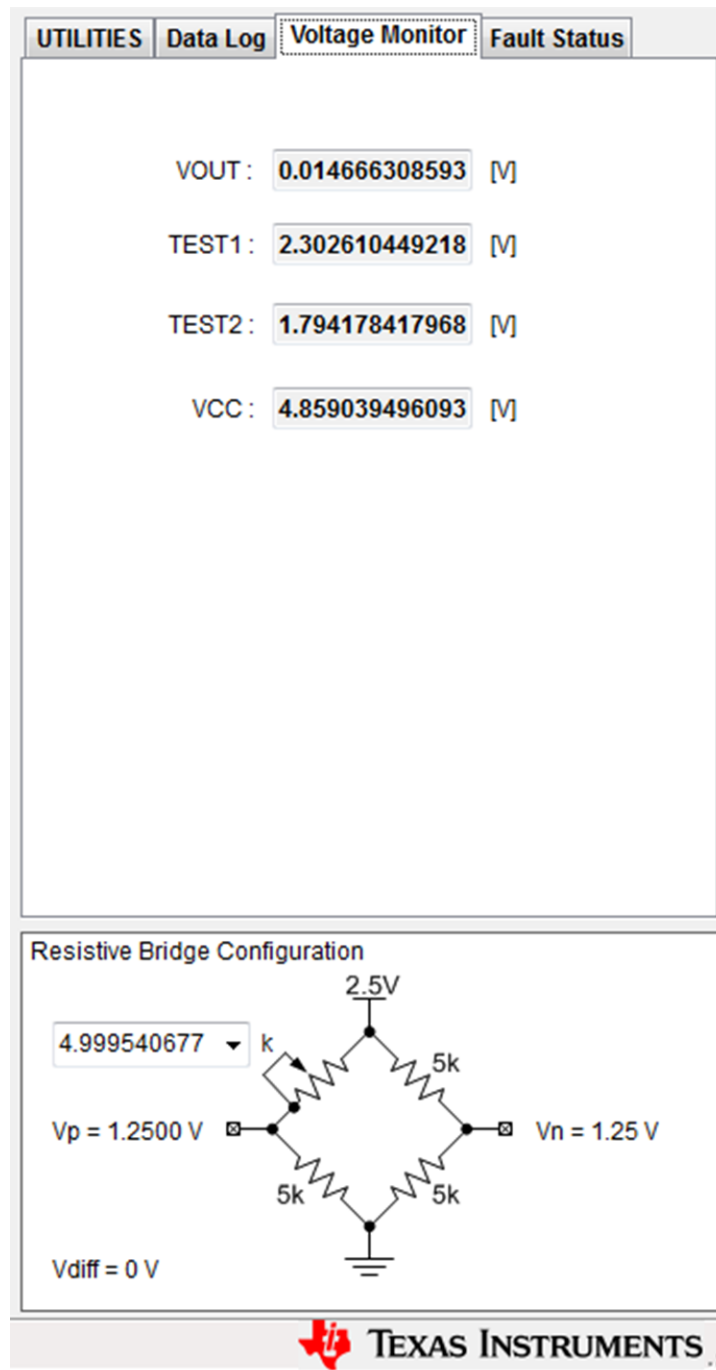
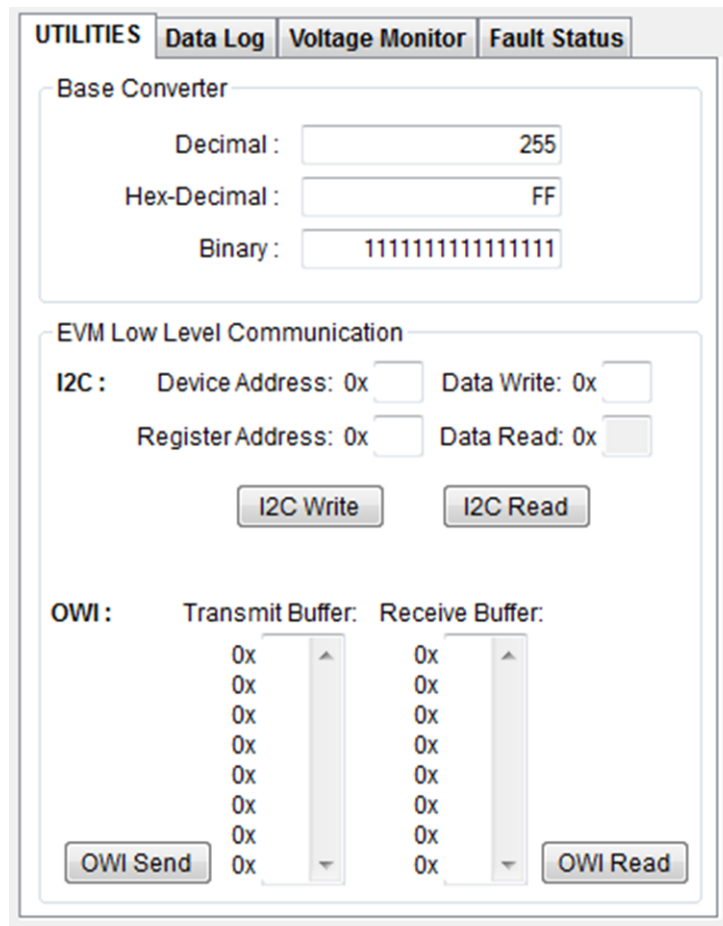


Figure 21. Tool Panel

4.15.1 Utilities Tab

The *UTILITIES* tab (see [Figure 22](#)) includes useful tools for interacting with the low level memory of the PGxxx device and for communication debugging purposes.



UTILITIES | Data Log | Voltage Monitor | Fault Status

Base Converter

Decimal :

Hex-Decimal :

Binary :

EVM Low Level Communication

I2C : Device Address: 0x Data Write: 0x

Register Address: 0x Data Read: 0x

OWI : Transmit Buffer: Receive Buffer:

0x	▲	0x	▲
0x		0x	
0x		0x	
0x		0x	
0x		0x	
0x		0x	
0x		0x	
0x		0x	
0x	▼	0x	▼

Copyright © 2017, Texas Instruments Incorporated

Figure 22. UTILITIES tab

4.15.1.1 Base Converter

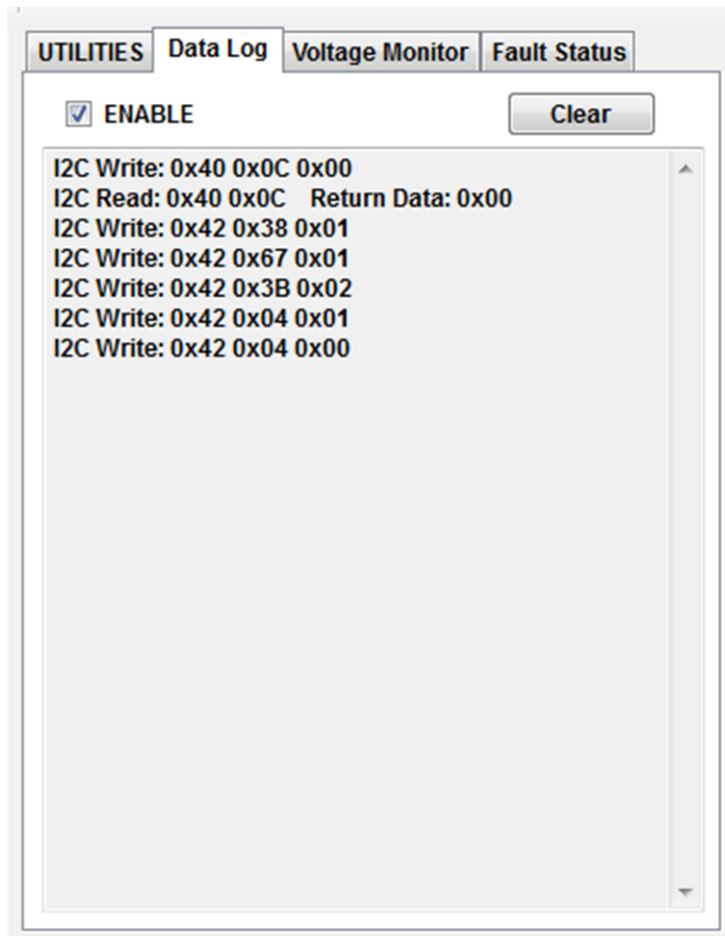
A base converter is included to quickly convert among decimal, hexadecimal, and binary number systems. Simply type a number into one of the three fields, and press the enter key to populate the converted values in the remaining two fields.

4.15.1.2 EVM Low-Level Communication

The *EVM Low-Level Communication* section allows for direct access to device registers, and provides an easy method to debug I2C and OWI communications. To configure a specific register enter the I2C device address, the PGxxx device register address desired, and the register value in the *Data Write* field then click the *I2C Write* button to send the data.

4.15.2 Data Log tab

The *Data Log* tab (see [Figure 23](#)) logs all communication functions between the GUI and the PGxxx device. Each line displays the communication type, followed by whether data was read or written, and finally the actual data in hexadecimal form.

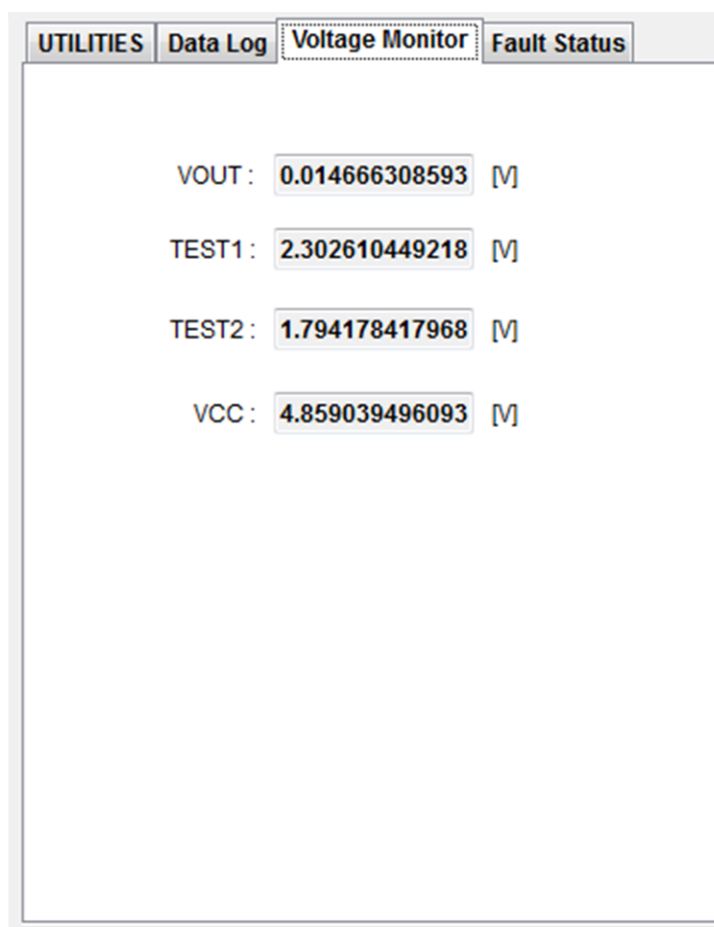


Copyright © 2017, Texas Instruments Incorporated

Figure 23. Data Log Tab

4.15.3 Voltage Monitor Tab

The *Voltage Monitor* as illustrated in [Figure 24](#) provides a quick way to check vital system voltages for EVM functionality and debugging purposes. These voltages are measured via the ADC in the MSP430 microcontroller included on the EVM.

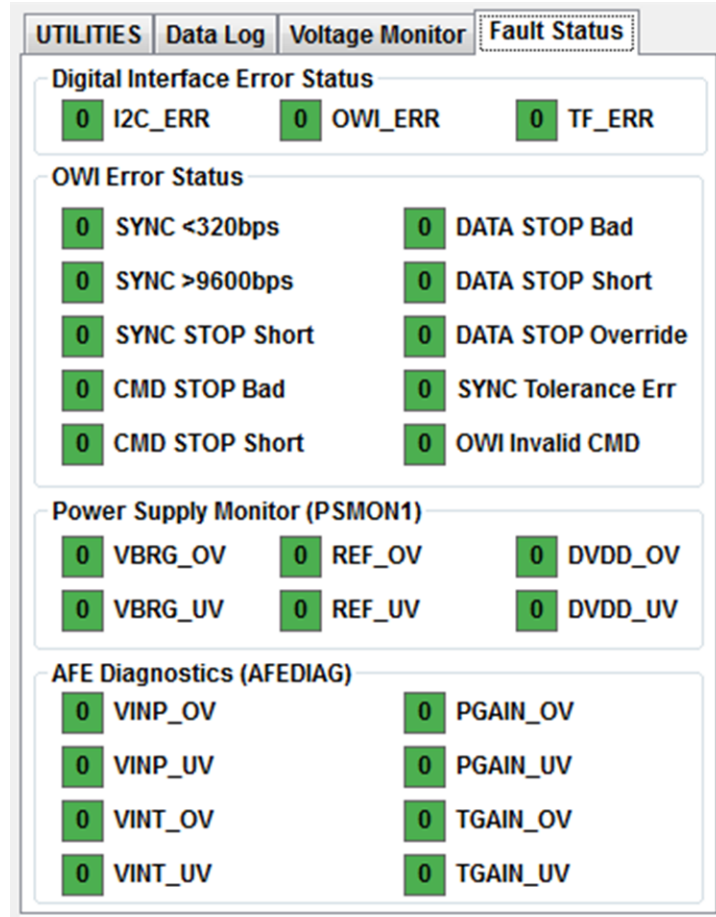


Copyright © 2017, Texas Instruments Incorporated

Figure 24. Voltage Monitor Tab

4.15.4 Fault Status tab

The *Fault Status* tab shown in [Figure 25](#) includes fault status registers for the digital interfaces, OWI status, the power supply monitor, and AFE diagnostics for quick diagnosis and debug of the most common device and EVM issues. [Table 6](#) describes the available fault status bits. Note that the *AFE Diagnostics* must be enabled in the EEPROM Settings before they are updated in the *Fault Status* tab.



Copyright © 2017, Texas Instruments Incorporated

Figure 25. Fault Status tab

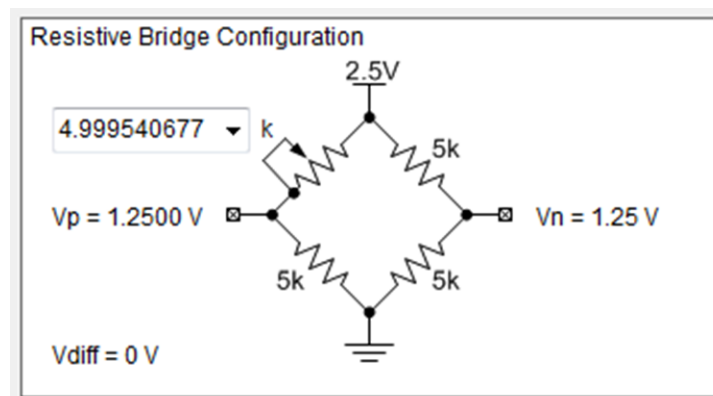
Table 6. Fault Status Indicators

Fault Indicator	Description
I2C_ERR	An error response on the access from I2C during access to the slave
OWI_ERR	An error response on the access from OWI during access to the slave
TF_ERR	Error response on the access from Trace FIFO
SYNC <320BPS	SYNC field data rate under 320 bits per second
SYNC >9600BPS	SYNC field data rate over 9600 bits per second
SYNC STOP Short	SYNC stop bit too short
CMD STOP Bad	Incorrect CMD stop bit value
CMD STOP Short	CMD stop bit too short
Data STOP Bad	Incorrect DATA stop bit value
Data STOP Short	DATA stop bit too short
Data STOP Override	DATA Field slave transmit value overdriven to dominant value during stop bit transmit
SYNC Tolerance Err	Consecutive bits in the sync field are different by more than ±25% tolerance

Table 6. Fault Status Indicators (continued)

Fault Indicator	Description
OWI Invalid CMD	OWI command field invalid. See device datasheet for available OWI commands
VBRG_OV	Bridge Supply OV Flag; Bridge Supply voltage > 1.15 times nominal value
VBRG_UV	Bridge Supply UV Flag; Bridge Supply voltage < 0.85 times nominal value
REF_OV	Reference OV Flag; Reference voltage > 1.1 times nominal value
REF_UV	Reference UV Flag; Reference voltage > 0.9 times nominal value
DVDD_OV	DVDD OV Flag; DVDD voltage > 1.15 times nominal value
DVDD_UV	DVDD UV Flag; DVDD voltage < 0.9 times nominal value
VINP_OV	Overvoltage on VINPP or VINPN pins
VINP_UV	Undervoltage on VINPP or VINPN pins
VINT_OV	Overvoltage on VINTP or VINTN pins
VINT_UV	Undervoltage on VINTP or VINTN pins
PGAIN_OV	Overvoltage at PGAIN output
PGAIN_UV	Undervoltage at PGAIN output
TGAIN_OV	Overvoltage at TGAIN output
TGAIN_UV	Undervoltage at TGAIN output

4.15.5 Resistive Bridge Configuration Panel



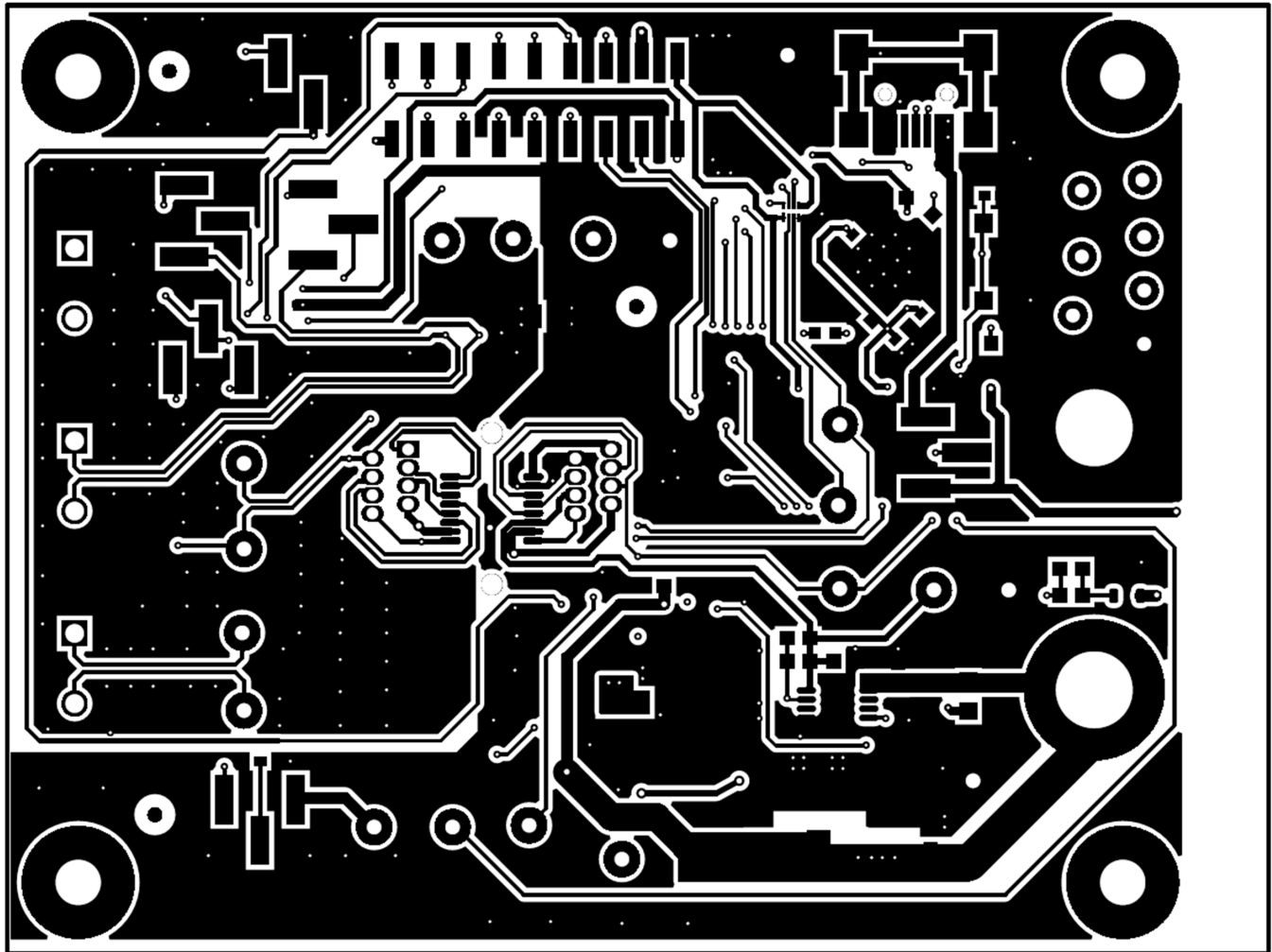
Copyright © 2017, Texas Instruments Incorporated

Figure 26. Resistive Bridge Configuration Panel

The *Resistive Bridge Configuration* panel allows the user to control the digital potentiometer that makes up one leg of the resistive bridge emulator on the EVM. This can be used to generate a differential voltage across the VINTP and VINTN or the VINPP and VINPN pins depending on the jumper configuration. The drop-down box allows the user to select a resistance in kΩ; the resulting change in the Vp voltage as well as the differential voltage of Vp – Vn are automatically updated in the schematic.

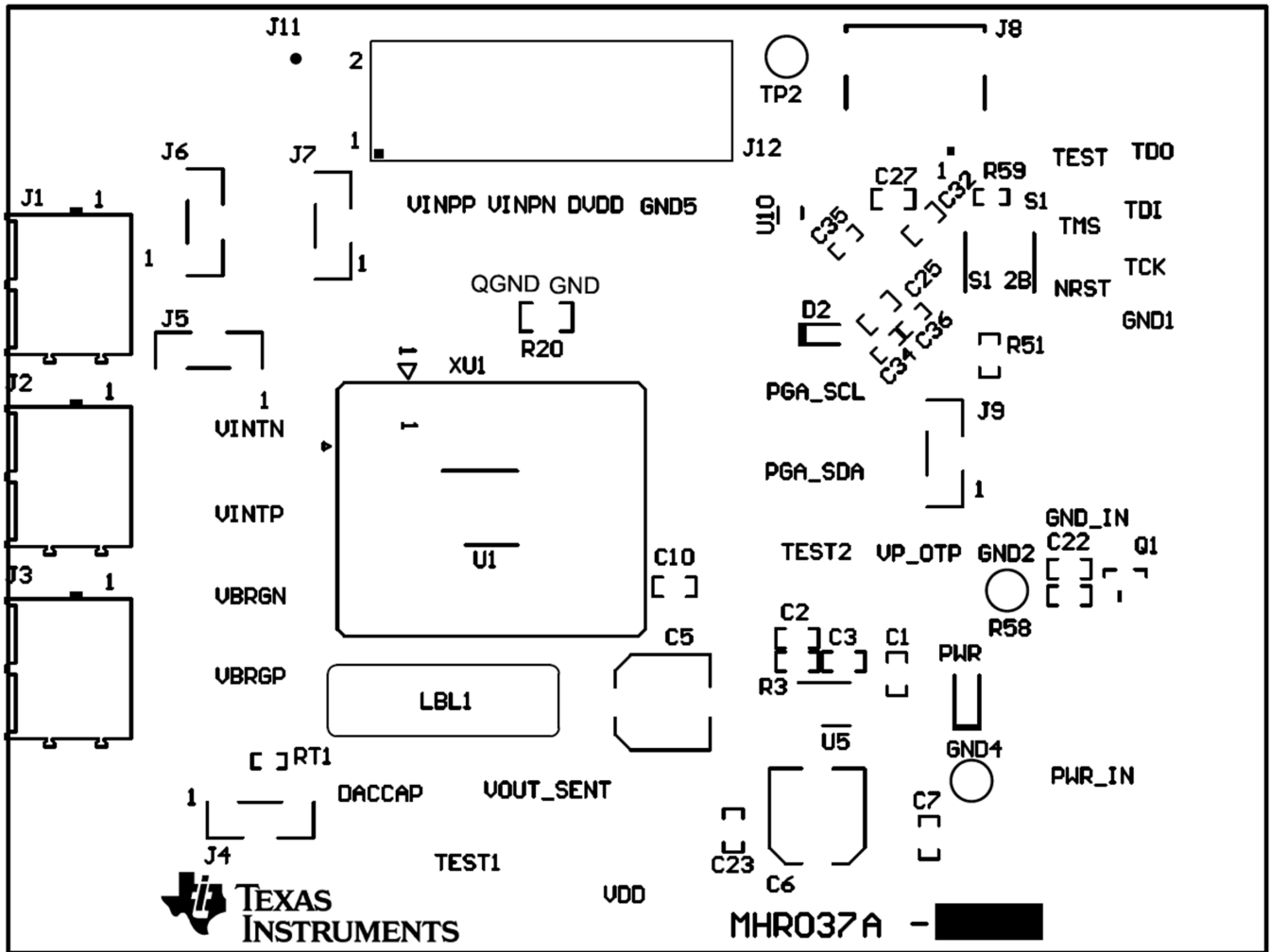
5 Board Layout

Figure 27 through Figure 30 illustrate the EVM PCB layouts.



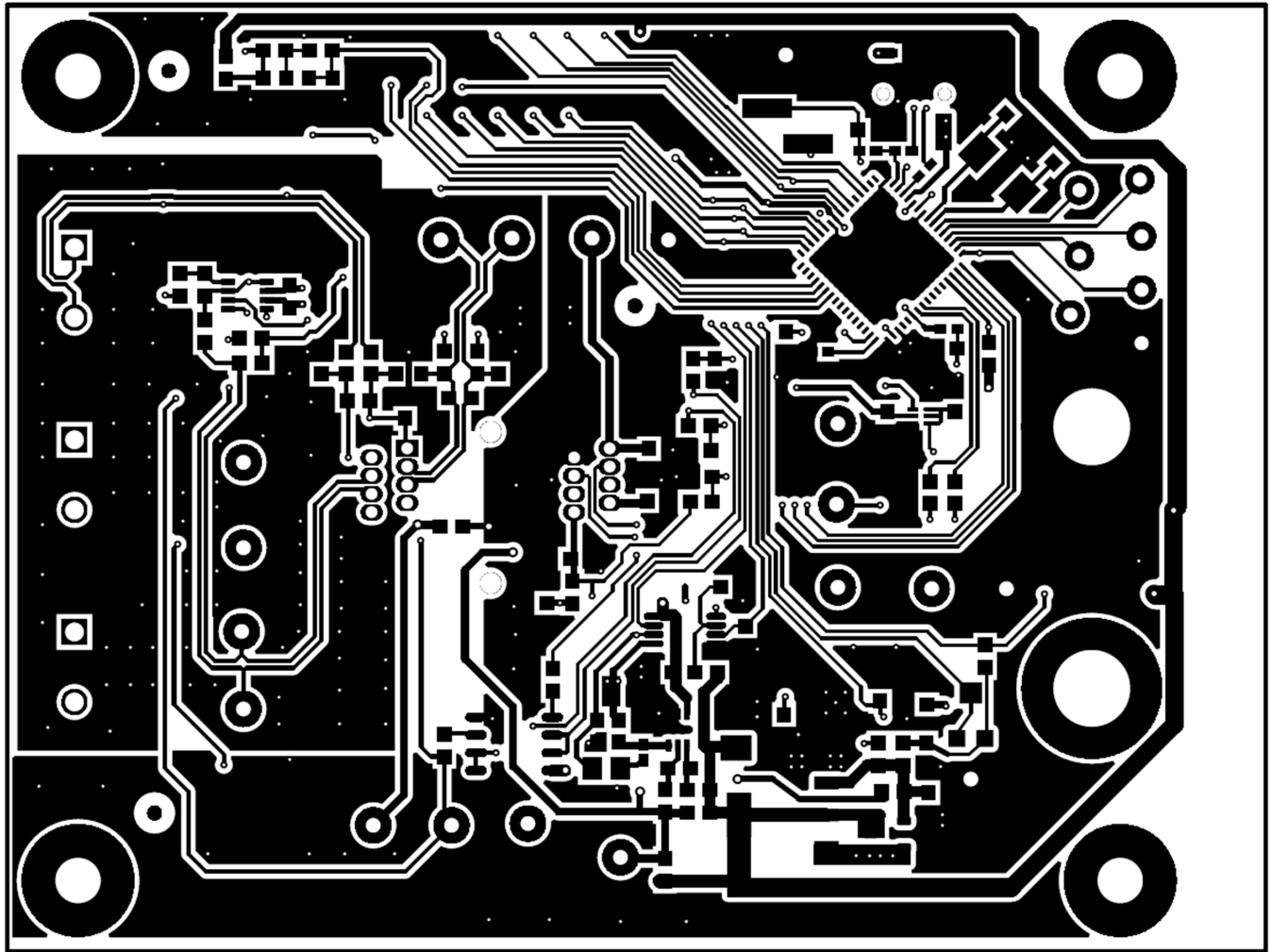
Copyright © 2017, Texas Instruments Incorporated

Figure 27. Top Layer



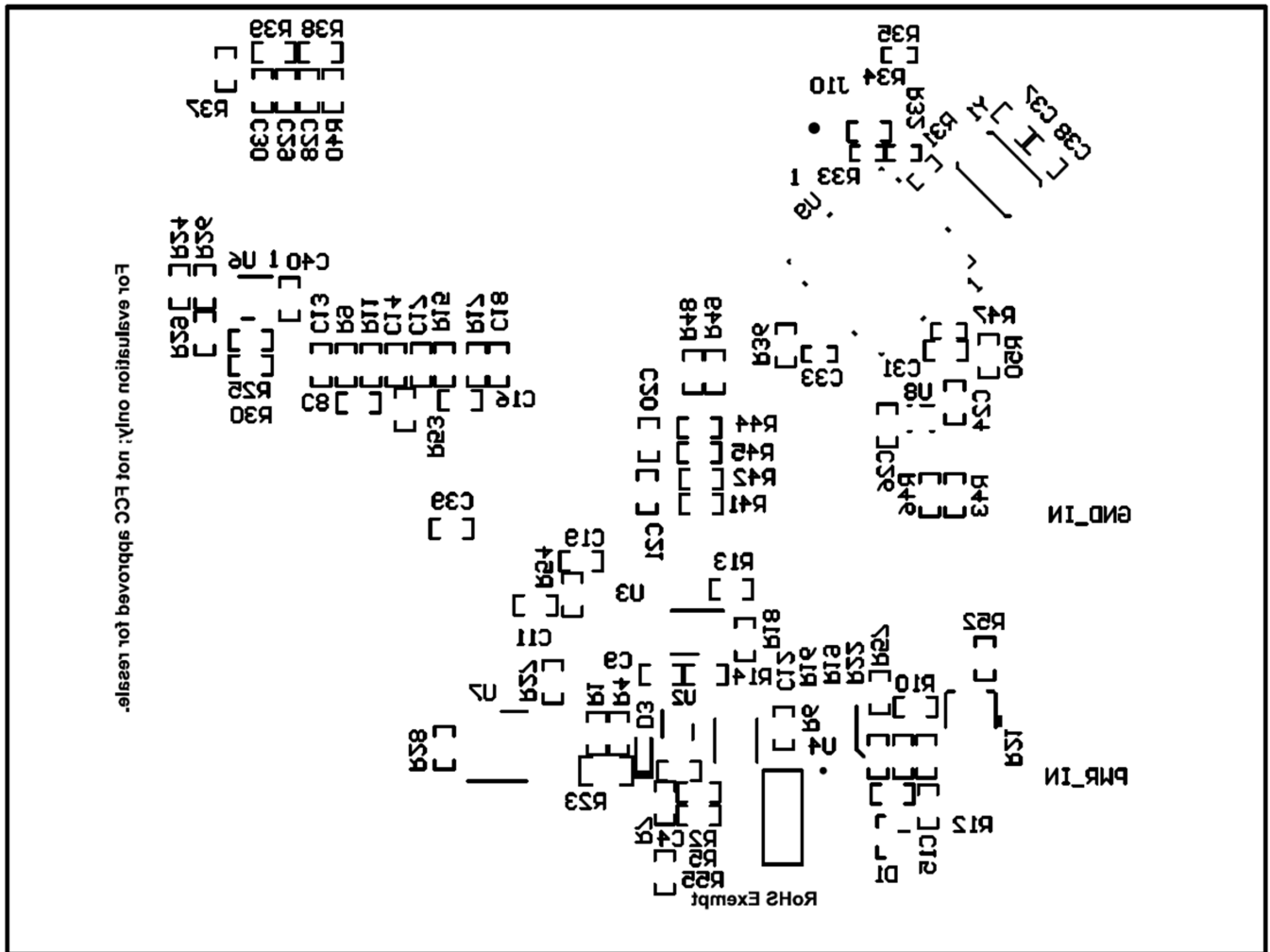
Copyright © 2017, Texas Instruments Incorporated

Figure 28. Top Component Placement



Copyright © 2017, Texas Instruments Incorporated

Figure 29. Bottom Layer



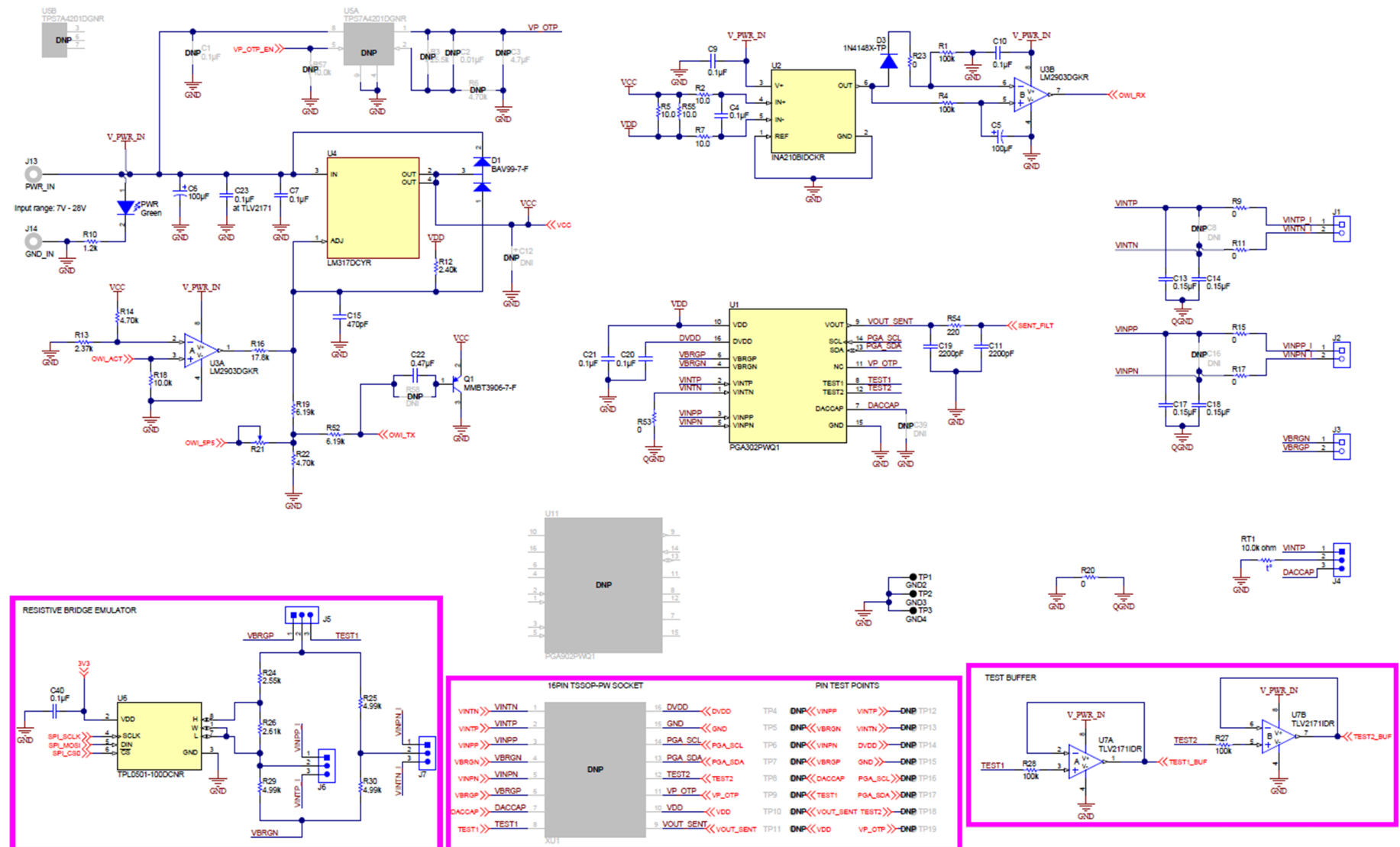
Copyright © 2017, Texas Instruments Incorporated

Figure 30. Bottom Component Placement

6 Schematic and Bill of Materials

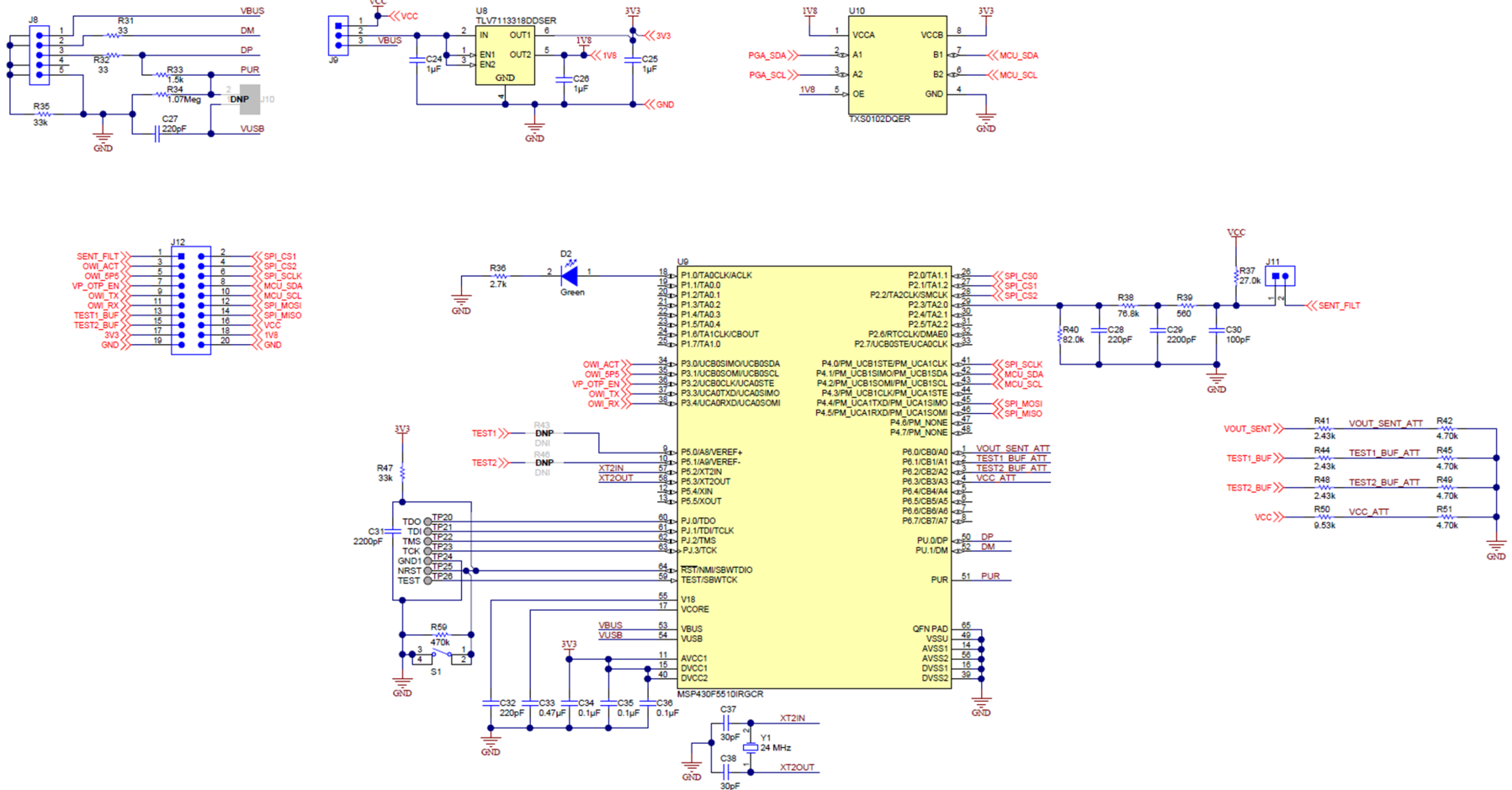
6.1 Schematic

NOTE: The schematic pictured in [Figure 31](#) shows the board configuration for the PGA904EVM which includes additional components populated for OTP programming and a socket for the PGAxXX devices.



Copyright © 2017, Texas Instruments Incorporated

Figure 31. PGA302EVM Schematic



Copyright © 2017, Texas Instruments Incorporated

Figure 32. PGxxxEVM MSP430 Interface Schematic

6.2 Bill of Materials

NOTE: The bill of materials in [Table 7](#) shows the components for the PGA904EVM-037. The PGA302EVM-037 and PGA904EVM-037 contain fewer components, but any component present on all three boards will have the same value and part number.

Table 7. Bill of Materials⁽¹⁾

Designator	QTY	Value	Description	Package Reference	Part Number	Manufacturer	Alternate Part Number	Alternate Manufacturer
IPCB1	1		Printed Circuit Board		MHR037	Any		
C4, C7, C9, C10, C20, C21, C23, C40	8	0.1uF	CAP, CERM, 0.1 µF, 50 V, ±10%, X7R, 0603	0603	C0603C104K5RACTU	Kemet		
C5	1	100uF	CAP, AL, 100 µF, 35 V, ±20%, SMD	F80	EMVA350ADA101MF80G	Chemi-Con		
C6	1	100uF	CAP, AL, 100 µF, 35 V, ±20%, 0.34 ohm, SMD	F80	EMZA350ADA101MF80G	Chemi-Con		
C11, C19, C29	3	2200pF	CAP, CERM, 2200 pF, 50 V, ±10%, X7R, 0603	0603	C0603C222K5RAC	Kemet		
C13, C14, C17, C18	4	0.15uF	CAP, CERM, 0.15 µF, 16 V, +80/-20%, Y5V, 0603	0603	C0603C154Z4VACTU	Kemet		
C15	1	470pF	CAP, CERM, 470 pF, 50 V, ±10%, X7R, 0603	0603	C0603C471K5RACTU	Kemet		
C22	1	0.47uF	CAP, CERM, 0.47 µF, 10 V, ±10%, X5R, 0603	0603	C0603C474K8PACTU	Kemet		
C24, C25, C26	3	1uF	CAP, CERM, 1 µF, 16 V, ±10%, X5R, 0603	0603	C0603C105K4PACTU	Kemet		
C27, C32	2	220pF	CAP, CERM, 220pF, 50V, ±1%, C0G/NP0, 0603	0603	06035A221FAT2A	AVX		
C28	1	220pF	CAP, CERM, 220 pF, 50 V, ±10%, C0G/NP0, 0603	0603	C0603C221K5GACTU	Kemet		
C30	1	100pF	CAP, CERM, 100 pF, 50 V, ±5%, C0G/NP0, 0603	0603	C0603C101J5GAC	Kemet		
C31	1	2200pF	CAP, CERM, 2200pF, 50V, ±10%, X7R, 0603	0603	C0603X222K5RACTU	Kemet		
C33	1	0.47uF	CAP, CERM, 0.47 µF, 10 V, ±10%, X5R, 0402	0402	C1005X5R1A474K050BB	TDK		
C34, C35, C36	3	0.1uF	CAP, CERM, 0.1 µF, 10 V, ±10%, X5R, 0402	0402	C1005X5R1A104K	TDK		
C37, C38	2	30pF	CAP, CERM, 30 pF, 50 V, ±5%, C0G/NP0, 0603	0603	GRM1885C1H300JA01D	Murata		
D1	1	75V	Diode, Switching, 75 V, 0.3 A, SOT-23	SOT-23	BAV99-7-F	Diodes Inc.		
D2	1	Green	LED, Green, SMD	1.6x0.8x0.8mm	LTST-C190GKT	Lite-On		
D3	1	75V	Diode, Switching, 75 V, 0.3 A, SOD-523	SOD-523	1N4148X-TP	Micro Commercial Components		
H1, H2, H3, H4	4		Machine Screw, Round, #4-40 x 1/4, Nylon, Philips panhead	Screw	NY PMS 440 0025 PH	BandF Fastener Supply		
H5, H6, H7, H8	4		Standoff, Hex, 0.5"L #4-40 Nylon	Standoff	1902C	Keystone		
J1, J2, J3	3		Thermal Block, 5 mm, 2-pole, TH	TH, 2-Leads, Body 10x9mm, Pitch 5mm	1935161	Phoenix Contact		
J4, J5, J6, J7, J9	5		Header, 100mil, 3x1, Gold, SMT	Samtec_TSM-103-01-X-SV	TSM-103-01-L-SV	Samtec		
J8	1		Conn Rcpt Mini USB2.0 Type B 5POS SMD	USB Mini Type B	1734035-2	TE Connectivity		
J11	1		Header, 100mil, 2x1, Gold with Tin Tail, SMT	2x1 Header	TSM-102-01-L-SV	Samtec		
J12	1		Header, 100mil, 10x2, Tin, SMT	1000x180x290mil	TSM-110-01-T-DV-P	Samtec		
J13, J14	2		Standard Banana Jack, Uninsulated, 5.5mm	Keystone_575-4	575-4	Keystone		
LBL1	1		Thermal Transfer Printable Labels, 0.650" W x 0.200" H - 10,000 per roll	PCB Label 0.650"H x 0.200"W	THT-14-423-10	Brady		

⁽¹⁾ Unless otherwise noted in the Alternate Part Number or Alternate Manufacturer columns, all parts may be substituted with equivalents.

Table 7. Bill of Materials⁽¹⁾ (continued)

Designator	QTY	Value	Description	Package Reference	Part Number	Manufacturer	Alternate Part Number	Alternate Manufacturer
PWR	1	Green	LED, Green, SMD	2x1.25mm	LG R971-KN-1	OSRAM		
Q1	1	40 V	Transistor, PNP, 40 V, 0.2 A, SOT-23	SOT-23	MMBT3906-7-F	Diodes Inc.		
R1, R4, R27, R28	4	100k	RES, 100 k, 1%, 0.1 W, 0603	0603	RC0603FR-07100KL	Yageo America		
R2, R5, R7, R55	4	10.0	RES, 10.0, 1%, 0.1 W, 0603	0603	RC0603FR-0710RL	Yageo America		
R9, R11, R15, R17, R53	5	0	RES, 0, 5%, 0.1 W, 0603	0603	RC0603JR-070RL	Yageo America		
R10	1	1.2k	RES, 1.2 k, 5%, 0.1 W, 0603	0603	RC0603JR-071K2L	Yageo America		
R12	1	2.40k	RES, 2.40 k, 1%, 0.1 W, 0603	0603	RC0603FR-072K4L	Yageo America		
R13	1	2.37k	RES, 2.37 k, 1%, 0.1 W, 0603	0603	RC0603FR-072K37L	Yageo America		
R14, R22, R42, R45, R49, R51	6	4.70k	RES, 4.70 k, 1%, 0.1 W, 0603	0603	RC0603FR-074K7L	Yageo America		
R16	1	17.8k	RES, 17.8 k, 1%, 0.1 W, 0603	0603	RC0603FR-0717K8L	Yageo America		
R18	1	10.0k	RES, 10.0 k, 1%, 0.1 W, 0603	0603	RC0603FR-0710KL	Yageo America		
R19, R52	2	6.19k	RES, 6.19 k, 1%, 0.1 W, 0603	0603	RC0603FR-076K19L	Yageo America		
R20	1	0	RES, 0, 5%, 0.125 W, 0805	0805	RC0805JR-070RL	Yageo America		
R21	1		TRIMMER 10K OHM 0.1W	3.8x3.6mm	TC33X-2-103E	Bourns		
R23	1	0	RES, 0, 5%, 0.125 W, 0805	0805	CRCW08050000Z0EA	Vishay-Dale		
R24	1	2.55k	RES, 2.55 k, 0.1%, 0.1 W, 0603	0603	RT0603BRD072K55L	Yageo America		
R25, R29, R30	3	4.99k	RES, 4.99 k, 0.1%, 0.1 W, 0603	0603	RT0603BRD074K99L	Yageo America		
R26	1	2.61k	RES, 2.61 k, 0.1%, 0.1 W, 0603	0603	RT0603BRD072K61L	Yageo America		
R31, R32	2	33	RES, 33 ohm, 5%, 0.063W, 0402	0402	CRCW040233R0JNED	Vishay-Dale		
R33	1	1.5k	RES, 1.5k ohm, 5%, 0.063W, 0402	0402	CRCW04021K50JNED	Vishay-Dale		
R34	1	1.07Meg	RES, 1.07Meg ohm, 1%, 0.1W, 0603	0603	CRCW06031M07FKEA	Vishay-Dale		
R35, R47	2	33k	RES, 33k ohm, 5%, 0.063W, 0402	0402	CRCW040233K0JNED	Vishay-Dale		
R36	1	2.7k	RES, 2.7 k, 5%, 0.1 W, 0603	0603	RC0603JR-072K7L	Yageo America		
R37	1	27.0k	RES, 27.0 k, 1%, 0.1 W, 0603	0603	RC0603FR-0727KL	Yageo America		
R38	1	76.8k	RES, 76.8 k, 1%, 0.1 W, 0603	0603	RC0603FR-0776K8L	Yageo America		
R39	1	560	RES, 560, 1%, 0.1 W, 0603	0603	RC0603FR-07560RL	Yageo America		
R40	1	82.0k	RES, 82.0 k, 1%, 0.1 W, 0603	0603	RC0603FR-0782KL	Yageo America		
R41, R44, R48	3	2.43k	RES, 2.43 k, 1%, 0.1 W, 0603	0603	RC0603FR-072K43L	Yageo America		
R50	1	9.53k	RES, 9.53 k, 1%, 0.1 W, 0603	0603	RC0603FR-079K53L	Yageo America		
R54	1	220	RES, 220, 1%, 0.1 W, 0603	0603	RC0603FR-07220RL	Yageo America		
R59	1	470k	RES, 470 k, 1%, 0.0625 W, 0402	0402	RC0402FR-07470KL	Yageo America		
RT1	1	10.0k ohm	Thermistor NTC, 10.0k ohm, 1%, 0402	0402	NCP15XH103F03RC	Murata		
S1	1		Switch, Tactile, SPST-NO, 0.1A, 16V, SMT	4.93x4.19x6.2 mm	7914G-1-000E	Bourns		
SH-J4, SH-J5, SH-J6, SH-J7, SH-J9	5		Shunt, 100mil, Gold plated, Black	Shunt 2 pos. 100 mil	881545-2	TE Connectivity		
TP1, TP2, TP3	3	Black	Test Point, Miniature, Black, TH	Black Miniature Testpoint	5001	Keystone		
U1	1		Sensor Signal Conditioner with 0-5V Ratiometric Output, PW0016A (TSSOP-16)	PW0016A	PGA302PWQ1	Texas Instruments		

Table 7. Bill of Materials⁽¹⁾ (continued)

Designator	QTY	Value	Description	Package Reference	Part Number	Manufacturer	Alternate Part Number	Alternate Manufacturer
U2	1		Voltage Output, Low- or High-Side Measurement, Bidirectional, Zero-Drift Series, Current-Shunt Monitor, DCK0006A (SOT-6)	DCK0006A	INA210BIDCKR	Texas Instruments	INA210BIDCKT	Texas Instruments
U3	1		DUAL DIFFERENTIAL COMPARATORS, DGK0008A	DGK0008A	LM2903DGKR	Texas Instruments		Texas Instruments
U4	1		3-TERMINAL ADJUSTABLE REGULATOR, DCY0004A	DCY0004A	LM317DCYR	Texas Instruments	LM317DCY	Texas Instruments
U6	1		256 Taps Single Channel Digital Potentiometer With SPI Interface, DCN0008A	DCN0008A	TPL0501-100DCNR	Texas Instruments		
U7	1		36-V, Single-Supply, Low-Power Operational Amplifier for Cost-Sensitive Systems, D0008A (SOIC-8)	D0008A	TLV2171IDR	Texas Instruments		
U8	1		Dual Output High PSRR LDO, 200 mA, Fixed 3.3, 1.8 V Output, 2 to 5.5 V Input, 6-pin WSON (DSE), -40 to 125 degC, Green (RoHS and no Sb/Br)	DSE0006A	TLV7113318DDSER	Texas Instruments	Equivalent	Texas Instruments
U9	1		25 MHz Mixed Signal Microcontroller with 32 KB Flash, 4096 B SRAM and 47 GPIOs, -40 to 85 degC, 64-pin QFN (RGC), Green (RoHS and no Sb/Br)	RGC0064B	MSP430F5510IRGCR	Texas Instruments	Equivalent	Texas Instruments
U10	1		2-Bit Bidirectional Voltage-Level Translator for Open-Drain and Push-Pull Application, DQE0008A	DQE0008A	TXS0102DQER	Texas Instruments		
Y1	1		Crystal, 24 MHz, 18 pF, SMD	ABM3	ABM3-24.000MHZ-D2Y-T	Abracon Corporation		
C1	0	0.1uF	CAP, CERM, 0.1 μF, 50 V, ±10%, X7R, 0603	0603	C0603C104K5RACTU	Kemet		
C2, C8, C16	0	0.01uF	CAP, CERM, 0.01 μF, 25 V, ±5%, C0G/NP0, 0603	0603	C0603H103J3GACTU	Kemet		
C3	0	4.7uF	CAP, CERM, 4.7 μF, 10 V, ±10%, X5R, 0603	0603	C0603C475K8PACTU	Kemet		
C12	0	1uF	CAP, TA, 1 μF, 35 V, ±10%, 1.7 ohm, SMD	3528-21	T495B105K035ATE1K7	Kemet		
C39	0	2200pF	CAP, CERM, 2200 pF, 50 V, ±10%, X7R, 0603	0603	C0603C222K5RAC	Kemet		
FID1, FID2, FID3, FID4, FID5, FID6	0		Fiducial mark. There is nothing to buy or mount.	Fiducial	N/A	N/A		
J10	0		Header, 100mil, 2x1, Gold with Tin Tail, SMT	2x1 Header	TSM-102-01-L-SV	Samtec		
R3	0	25.5k	RES, 25.5 k, 1%, 0.1 W, 0603	0603	RC0603FR-0725K5L	Yageo America		
R6	0	4.70k	RES, 4.70 k, 1%, 0.1 W, 0603	0603	RC0603FR-074K7L	Yageo America		
R43, R46	0	0	RES, 0, 5%, 0.1 W, 0603	0603	RC0603JR-070RL	Yageo America		
R57	0	10.0k	RES, 10.0 k, 1%, 0.1 W, 0603	0603	RC0603FR-0710KL	Yageo America		
R58	0	4.70Meg	RES, 4.70 M, 1%, 0.1 W, 0603	0603	RC0603FR-074M7L	Yageo America		
U5	0		Single Output LDO, 50 mA, Adjustable 1.175 to 26 V Output, 7 to 28 V Input, 8-pin MSOP (DGN), -40 to 125 degC, Green (RoHS and no Sb/Br)	DGN0008B	TPS7A4201DGNR	Texas Instruments	Equivalent	Texas Instruments
U11	0		Sensor Signal Conditioner with 0-5V Ratiometric Output, PW0016A (TSSOP-16)	PW0016A	PGA902PWQ1	Texas Instruments		
XU1	0		Socket, SOP-16, 0.65mm Pitch, TH	Socket, 16-Leads, Body 17.6X21.5mm, Pitch 0.65mm	OTS-16(28)-0.65-01	Enplas Tech Solutions		

STANDARD TERMS FOR EVALUATION MODULES

1. *Delivery:* TI delivers TI evaluation boards, kits, or modules, including any accompanying demonstration software, components, and/or documentation which may be provided together or separately (collectively, an "EVM" or "EVMs") to the User ("User") in accordance with the terms set forth herein. User's acceptance of the EVM is expressly subject to the following terms.
 - 1.1 EVMs are intended solely for product or software developers for use in a research and development setting to facilitate feasibility evaluation, experimentation, or scientific analysis of TI semiconductor products. EVMs have no direct function and are not finished products. EVMs shall not be directly or indirectly assembled as a part or subassembly in any finished product. For clarification, any software or software tools provided with the EVM ("Software") shall not be subject to the terms and conditions set forth herein but rather shall be subject to the applicable terms that accompany such Software
 - 1.2 EVMs are not intended for consumer or household use. EVMs may not be sold, sublicensed, leased, rented, loaned, assigned, or otherwise distributed for commercial purposes by Users, in whole or in part, or used in any finished product or production system.
2. *Limited Warranty and Related Remedies/Disclaimers:*
 - 2.1 These terms do not apply to Software. The warranty, if any, for Software is covered in the applicable Software License Agreement.
 - 2.2 TI warrants that the TI EVM will conform to TI's published specifications for ninety (90) days after the date TI delivers such EVM to User. Notwithstanding the foregoing, TI shall not be liable for a nonconforming EVM if (a) the nonconformity was caused by neglect, misuse or mistreatment by an entity other than TI, including improper installation or testing, or for any EVMs that have been altered or modified in any way by an entity other than TI, (b) the nonconformity resulted from User's design, specifications or instructions for such EVMs or improper system design, or (c) User has not paid on time. Testing and other quality control techniques are used to the extent TI deems necessary. TI does not test all parameters of each EVM. User's claims against TI under this Section 2 are void if User fails to notify TI of any apparent defects in the EVMs within ten (10) business days after delivery, or of any hidden defects with ten (10) business days after the defect has been detected.
 - 2.3 TI's sole liability shall be at its option to repair or replace EVMs that fail to conform to the warranty set forth above, or credit User's account for such EVM. TI's liability under this warranty shall be limited to EVMs that are returned during the warranty period to the address designated by TI and that are determined by TI not to conform to such warranty. If TI elects to repair or replace such EVM, TI shall have a reasonable time to repair such EVM or provide replacements. Repaired EVMs shall be warranted for the remainder of the original warranty period. Replaced EVMs shall be warranted for a new full ninety (90) day warranty period.
3. *Regulatory Notices:*
 - 3.1 *United States*
 - 3.1.1 *Notice applicable to EVMs not FCC-Approved:*

FCC NOTICE: This kit is designed to allow product developers to evaluate electronic components, circuitry, or software associated with the kit to determine whether to incorporate such items in a finished product and software developers to write software applications for use with the end product. This kit is not a finished product and when assembled may not be resold or otherwise marketed unless all required FCC equipment authorizations are first obtained. Operation is subject to the condition that this product not cause harmful interference to licensed radio stations and that this product accept harmful interference. Unless the assembled kit is designed to operate under part 15, part 18 or part 95 of this chapter, the operator of the kit must operate under the authority of an FCC license holder or must secure an experimental authorization under part 5 of this chapter.
 - 3.1.2 *For EVMs annotated as FCC – FEDERAL COMMUNICATIONS COMMISSION Part 15 Compliant:*

CAUTION

This device complies with part 15 of the FCC Rules. Operation is subject to the following two conditions: (1) This device may not cause harmful interference, and (2) this device must accept any interference received, including interference that may cause undesired operation.

Changes or modifications not expressly approved by the party responsible for compliance could void the user's authority to operate the equipment.

FCC Interference Statement for Class A EVM devices

NOTE: This equipment has been tested and found to comply with the limits for a Class A digital device, pursuant to part 15 of the FCC Rules. These limits are designed to provide reasonable protection against harmful interference when the equipment is operated in a commercial environment. This equipment generates, uses, and can radiate radio frequency energy and, if not installed and used in accordance with the instruction manual, may cause harmful interference to radio communications. Operation of this equipment in a residential area is likely to cause harmful interference in which case the user will be required to correct the interference at his own expense.

FCC Interference Statement for Class B EVM devices

NOTE: This equipment has been tested and found to comply with the limits for a Class B digital device, pursuant to part 15 of the FCC Rules. These limits are designed to provide reasonable protection against harmful interference in a residential installation. This equipment generates, uses and can radiate radio frequency energy and, if not installed and used in accordance with the instructions, may cause harmful interference to radio communications. However, there is no guarantee that interference will not occur in a particular installation. If this equipment does cause harmful interference to radio or television reception, which can be determined by turning the equipment off and on, the user is encouraged to try to correct the interference by one or more of the following measures:

- Reorient or relocate the receiving antenna.
- Increase the separation between the equipment and receiver.
- Connect the equipment into an outlet on a circuit different from that to which the receiver is connected.
- Consult the dealer or an experienced radio/TV technician for help.

3.2 Canada

3.2.1 For EVMs issued with an Industry Canada Certificate of Conformance to RSS-210 or RSS-247

Concerning EVMs Including Radio Transmitters:

This device complies with Industry Canada license-exempt RSSs. Operation is subject to the following two conditions:

(1) this device may not cause interference, and (2) this device must accept any interference, including interference that may cause undesired operation of the device.

Concernant les EVMs avec appareils radio:

Le présent appareil est conforme aux CNR d'Industrie Canada applicables aux appareils radio exempts de licence. L'exploitation est autorisée aux deux conditions suivantes: (1) l'appareil ne doit pas produire de brouillage, et (2) l'utilisateur de l'appareil doit accepter tout brouillage radioélectrique subi, même si le brouillage est susceptible d'en compromettre le fonctionnement.

Concerning EVMs Including Detachable Antennas:

Under Industry Canada regulations, this radio transmitter may only operate using an antenna of a type and maximum (or lesser) gain approved for the transmitter by Industry Canada. To reduce potential radio interference to other users, the antenna type and its gain should be so chosen that the equivalent isotropically radiated power (e.i.r.p.) is not more than that necessary for successful communication. This radio transmitter has been approved by Industry Canada to operate with the antenna types listed in the user guide with the maximum permissible gain and required antenna impedance for each antenna type indicated. Antenna types not included in this list, having a gain greater than the maximum gain indicated for that type, are strictly prohibited for use with this device.

Concernant les EVMs avec antennes détachables

Conformément à la réglementation d'Industrie Canada, le présent émetteur radio peut fonctionner avec une antenne d'un type et d'un gain maximal (ou inférieur) approuvé pour l'émetteur par Industrie Canada. Dans le but de réduire les risques de brouillage radioélectrique à l'intention des autres utilisateurs, il faut choisir le type d'antenne et son gain de sorte que la puissance isotrope rayonnée équivalente (p.i.r.e.) ne dépasse pas l'intensité nécessaire à l'établissement d'une communication satisfaisante. Le présent émetteur radio a été approuvé par Industrie Canada pour fonctionner avec les types d'antenne énumérés dans le manuel d'usage et ayant un gain admissible maximal et l'impédance requise pour chaque type d'antenne. Les types d'antenne non inclus dans cette liste, ou dont le gain est supérieur au gain maximal indiqué, sont strictement interdits pour l'exploitation de l'émetteur.

3.3 Japan

3.3.1 *Notice for EVMs delivered in Japan:* Please see http://www.tij.co.jp/lstds/ti_ja/general/eStore/notice_01.page 日本国内に輸入される評価用キット、ボードについては、次のところをご覧ください。
http://www.tij.co.jp/lstds/ti_ja/general/eStore/notice_01.page

3.3.2 *Notice for Users of EVMs Considered "Radio Frequency Products" in Japan:* EVMs entering Japan may not be certified by TI as conforming to Technical Regulations of Radio Law of Japan.

If User uses EVMs in Japan, not certified to Technical Regulations of Radio Law of Japan, User is required to follow the instructions set forth by Radio Law of Japan, which includes, but is not limited to, the instructions below with respect to EVMs (which for the avoidance of doubt are stated strictly for convenience and should be verified by User):

1. Use EVMs in a shielded room or any other test facility as defined in the notification #173 issued by Ministry of Internal Affairs and Communications on March 28, 2006, based on Sub-section 1.1 of Article 6 of the Ministry's Rule for Enforcement of Radio Law of Japan,
2. Use EVMs only after User obtains the license of Test Radio Station as provided in Radio Law of Japan with respect to EVMs, or
3. Use of EVMs only after User obtains the Technical Regulations Conformity Certification as provided in Radio Law of Japan with respect to EVMs. Also, do not transfer EVMs, unless User gives the same notice above to the transferee. Please note that if User does not follow the instructions above, User will be subject to penalties of Radio Law of Japan.

【無線電波を送信する製品の開発キットをお使いになる際の注意事項】 開発キットの中には技術基準適合証明を受けていないものがあります。技術適合証明を受けていないものご使用に際しては、電波法遵守のため、以下のいずれかの措置を取っていただく必要がありますのでご注意ください。

1. 電波法施行規則第6条第1項第1号に基づく平成18年3月28日総務省告示第173号で定められた電波暗室等の試験設備でご使用いただく。
2. 実験局の免許を取得後ご使用いただく。
3. 技術基準適合証明を取得後ご使用いただく。

なお、本製品は、上記の「ご使用にあたっての注意」を譲渡先、移転先に通知しない限り、譲渡、移転できないものとします。

上記を遵守頂けない場合は、電波法の罰則が適用される可能性があることをご留意ください。日本テキサス・インスツルメンツ株式会社
東京都新宿区西新宿 6 丁目 2 4 番 1 号
西新宿三井ビル

3.3.3 *Notice for EVMs for Power Line Communication:* Please see http://www.tij.co.jp/lstds/ti_ja/general/eStore/notice_02.page
電力線搬送波通信についての開発キットをお使いになる際の注意事項については、次のところをご覧ください。 http://www.tij.co.jp/lstds/ti_ja/general/eStore/notice_02.page

3.4 *European Union*

3.4.1 *For EVMs subject to EU Directive 2014/30/EU (Electromagnetic Compatibility Directive):*

This is a class A product intended for use in environments other than domestic environments that are connected to a low-voltage power-supply network that supplies buildings used for domestic purposes. In a domestic environment this product may cause radio interference in which case the user may be required to take adequate measures.

4 *EVM Use Restrictions and Warnings:*

4.1 EVMS ARE NOT FOR USE IN FUNCTIONAL SAFETY AND/OR SAFETY CRITICAL EVALUATIONS, INCLUDING BUT NOT LIMITED TO EVALUATIONS OF LIFE SUPPORT APPLICATIONS.

4.2 User must read and apply the user guide and other available documentation provided by TI regarding the EVM prior to handling or using the EVM, including without limitation any warning or restriction notices. The notices contain important safety information related to, for example, temperatures and voltages.

4.3 *Safety-Related Warnings and Restrictions:*

4.3.1 User shall operate the EVM within TI's recommended specifications and environmental considerations stated in the user guide, other available documentation provided by TI, and any other applicable requirements and employ reasonable and customary safeguards. Exceeding the specified performance ratings and specifications (including but not limited to input and output voltage, current, power, and environmental ranges) for the EVM may cause personal injury or death, or property damage. If there are questions concerning performance ratings and specifications, User should contact a TI field representative prior to connecting interface electronics including input power and intended loads. Any loads applied outside of the specified output range may also result in unintended and/or inaccurate operation and/or possible permanent damage to the EVM and/or interface electronics. Please consult the EVM user guide prior to connecting any load to the EVM output. If there is uncertainty as to the load specification, please contact a TI field representative. During normal operation, even with the inputs and outputs kept within the specified allowable ranges, some circuit components may have elevated case temperatures. These components include but are not limited to linear regulators, switching transistors, pass transistors, current sense resistors, and heat sinks, which can be identified using the information in the associated documentation. When working with the EVM, please be aware that the EVM may become very warm.

4.3.2 EVMs are intended solely for use by technically qualified, professional electronics experts who are familiar with the dangers and application risks associated with handling electrical mechanical components, systems, and subsystems. User assumes all responsibility and liability for proper and safe handling and use of the EVM by User or its employees, affiliates, contractors or designees. User assumes all responsibility and liability to ensure that any interfaces (electronic and/or mechanical) between the EVM and any human body are designed with suitable isolation and means to safely limit accessible leakage currents to minimize the risk of electrical shock hazard. User assumes all responsibility and liability for any improper or unsafe handling or use of the EVM by User or its employees, affiliates, contractors or designees.

4.4 User assumes all responsibility and liability to determine whether the EVM is subject to any applicable international, federal, state, or local laws and regulations related to User's handling and use of the EVM and, if applicable, User assumes all responsibility and liability for compliance in all respects with such laws and regulations. User assumes all responsibility and liability for proper disposal and recycling of the EVM consistent with all applicable international, federal, state, and local requirements.

5. *Accuracy of Information:* To the extent TI provides information on the availability and function of EVMs, TI attempts to be as accurate as possible. However, TI does not warrant the accuracy of EVM descriptions, EVM availability or other information on its websites as accurate, complete, reliable, current, or error-free.

6. *Disclaimers:*

6.1 EXCEPT AS SET FORTH ABOVE, EVMS AND ANY MATERIALS PROVIDED WITH THE EVM (INCLUDING, BUT NOT LIMITED TO, REFERENCE DESIGNS AND THE DESIGN OF THE EVM ITSELF) ARE PROVIDED "AS IS" AND "WITH ALL FAULTS." TI DISCLAIMS ALL OTHER WARRANTIES, EXPRESS OR IMPLIED, REGARDING SUCH ITEMS, INCLUDING BUT NOT LIMITED TO ANY EPIDEMIC FAILURE WARRANTY OR IMPLIED WARRANTIES OF MERCHANTABILITY OR FITNESS FOR A PARTICULAR PURPOSE OR NON-INFRINGEMENT OF ANY THIRD PARTY PATENTS, COPYRIGHTS, TRADE SECRETS OR OTHER INTELLECTUAL PROPERTY RIGHTS.

6.2 EXCEPT FOR THE LIMITED RIGHT TO USE THE EVM SET FORTH HEREIN, NOTHING IN THESE TERMS SHALL BE CONSTRUED AS GRANTING OR CONFERRING ANY RIGHTS BY LICENSE, PATENT, OR ANY OTHER INDUSTRIAL OR INTELLECTUAL PROPERTY RIGHT OF TI, ITS SUPPLIERS/LICENSORS OR ANY OTHER THIRD PARTY, TO USE THE EVM IN ANY FINISHED END-USER OR READY-TO-USE FINAL PRODUCT, OR FOR ANY INVENTION, DISCOVERY OR IMPROVEMENT, REGARDLESS OF WHEN MADE, CONCEIVED OR ACQUIRED.

7. *USER'S INDEMNITY OBLIGATIONS AND REPRESENTATIONS.* USER WILL DEFEND, INDEMNIFY AND HOLD TI, ITS LICENSORS AND THEIR REPRESENTATIVES HARMLESS FROM AND AGAINST ANY AND ALL CLAIMS, DAMAGES, LOSSES, EXPENSES, COSTS AND LIABILITIES (COLLECTIVELY, "CLAIMS") ARISING OUT OF OR IN CONNECTION WITH ANY HANDLING OR USE OF THE EVM THAT IS NOT IN ACCORDANCE WITH THESE TERMS. THIS OBLIGATION SHALL APPLY WHETHER CLAIMS ARISE UNDER STATUTE, REGULATION, OR THE LAW OF TORT, CONTRACT OR ANY OTHER LEGAL THEORY, AND EVEN IF THE EVM FAILS TO PERFORM AS DESCRIBED OR EXPECTED.

8. *Limitations on Damages and Liability:*

8.1 *General Limitations.* IN NO EVENT SHALL TI BE LIABLE FOR ANY SPECIAL, COLLATERAL, INDIRECT, PUNITIVE, INCIDENTAL, CONSEQUENTIAL, OR EXEMPLARY DAMAGES IN CONNECTION WITH OR ARISING OUT OF THESE TERMS OR THE USE OF THE EVMS, REGARDLESS OF WHETHER TI HAS BEEN ADVISED OF THE POSSIBILITY OF SUCH DAMAGES. EXCLUDED DAMAGES INCLUDE, BUT ARE NOT LIMITED TO, COST OF REMOVAL OR REINSTALLATION, ANCILLARY COSTS TO THE PROCUREMENT OF SUBSTITUTE GOODS OR SERVICES, RETESTING, OUTSIDE COMPUTER TIME, LABOR COSTS, LOSS OF GOODWILL, LOSS OF PROFITS, LOSS OF SAVINGS, LOSS OF USE, LOSS OF DATA, OR BUSINESS INTERRUPTION. NO CLAIM, SUIT OR ACTION SHALL BE BROUGHT AGAINST TI MORE THAN TWELVE (12) MONTHS AFTER THE EVENT THAT GAVE RISE TO THE CAUSE OF ACTION HAS OCCURRED.

8.2 *Specific Limitations.* IN NO EVENT SHALL TI'S AGGREGATE LIABILITY FROM ANY USE OF AN EVM PROVIDED HEREUNDER, INCLUDING FROM ANY WARRANTY, INDEMNITY OR OTHER OBLIGATION ARISING OUT OF OR IN CONNECTION WITH THESE TERMS, EXCEED THE TOTAL AMOUNT PAID TO TI BY USER FOR THE PARTICULAR EVM(S) AT ISSUE DURING THE PRIOR TWELVE (12) MONTHS WITH RESPECT TO WHICH LOSSES OR DAMAGES ARE CLAIMED. THE EXISTENCE OF MORE THAN ONE CLAIM SHALL NOT ENLARGE OR EXTEND THIS LIMIT.

9. *Return Policy.* Except as otherwise provided, TI does not offer any refunds, returns, or exchanges. Furthermore, no return of EVM(s) will be accepted if the package has been opened and no return of the EVM(s) will be accepted if they are damaged or otherwise not in a resalable condition. If User feels it has been incorrectly charged for the EVM(s) it ordered or that delivery violates the applicable order, User should contact TI. All refunds will be made in full within thirty (30) working days from the return of the components(s), excluding any postage or packaging costs.

10. *Governing Law:* These terms and conditions shall be governed by and interpreted in accordance with the laws of the State of Texas, without reference to conflict-of-laws principles. User agrees that non-exclusive jurisdiction for any dispute arising out of or relating to these terms and conditions lies within courts located in the State of Texas and consents to venue in Dallas County, Texas. Notwithstanding the foregoing, any judgment may be enforced in any United States or foreign court, and TI may seek injunctive relief in any United States or foreign court.

IMPORTANT NOTICE FOR TI DESIGN INFORMATION AND RESOURCES

Texas Instruments Incorporated ("TI") technical, application or other design advice, services or information, including, but not limited to, reference designs and materials relating to evaluation modules, (collectively, "TI Resources") are intended to assist designers who are developing applications that incorporate TI products; by downloading, accessing or using any particular TI Resource in any way, you (individually or, if you are acting on behalf of a company, your company) agree to use it solely for this purpose and subject to the terms of this Notice.

TI's provision of TI Resources does not expand or otherwise alter TI's applicable published warranties or warranty disclaimers for TI products, and no additional obligations or liabilities arise from TI providing such TI Resources. TI reserves the right to make corrections, enhancements, improvements and other changes to its TI Resources.

You understand and agree that you remain responsible for using your independent analysis, evaluation and judgment in designing your applications and that you have full and exclusive responsibility to assure the safety of your applications and compliance of your applications (and of all TI products used in or for your applications) with all applicable regulations, laws and other applicable requirements. You represent that, with respect to your applications, you have all the necessary expertise to create and implement safeguards that (1) anticipate dangerous consequences of failures, (2) monitor failures and their consequences, and (3) lessen the likelihood of failures that might cause harm and take appropriate actions. You agree that prior to using or distributing any applications that include TI products, you will thoroughly test such applications and the functionality of such TI products as used in such applications. TI has not conducted any testing other than that specifically described in the published documentation for a particular TI Resource.

You are authorized to use, copy and modify any individual TI Resource only in connection with the development of applications that include the TI product(s) identified in such TI Resource. NO OTHER LICENSE, EXPRESS OR IMPLIED, BY ESTOPPEL OR OTHERWISE TO ANY OTHER TI INTELLECTUAL PROPERTY RIGHT, AND NO LICENSE TO ANY TECHNOLOGY OR INTELLECTUAL PROPERTY RIGHT OF TI OR ANY THIRD PARTY IS GRANTED HEREIN, including but not limited to any patent right, copyright, mask work right, or other intellectual property right relating to any combination, machine, or process in which TI products or services are used. Information regarding or referencing third-party products or services does not constitute a license to use such products or services, or a warranty or endorsement thereof. Use of TI Resources may require a license from a third party under the patents or other intellectual property of the third party, or a license from TI under the patents or other intellectual property of TI.

TI RESOURCES ARE PROVIDED "AS IS" AND WITH ALL FAULTS. TI DISCLAIMS ALL OTHER WARRANTIES OR REPRESENTATIONS, EXPRESS OR IMPLIED, REGARDING TI RESOURCES OR USE THEREOF, INCLUDING BUT NOT LIMITED TO ACCURACY OR COMPLETENESS, TITLE, ANY EPIDEMIC FAILURE WARRANTY AND ANY IMPLIED WARRANTIES OF MERCHANTABILITY, FITNESS FOR A PARTICULAR PURPOSE, AND NON-INFRINGEMENT OF ANY THIRD PARTY INTELLECTUAL PROPERTY RIGHTS.

TI SHALL NOT BE LIABLE FOR AND SHALL NOT DEFEND OR INDEMNIFY YOU AGAINST ANY CLAIM, INCLUDING BUT NOT LIMITED TO ANY INFRINGEMENT CLAIM THAT RELATES TO OR IS BASED ON ANY COMBINATION OF PRODUCTS EVEN IF DESCRIBED IN TI RESOURCES OR OTHERWISE. IN NO EVENT SHALL TI BE LIABLE FOR ANY ACTUAL, DIRECT, SPECIAL, COLLATERAL, INDIRECT, PUNITIVE, INCIDENTAL, CONSEQUENTIAL OR EXEMPLARY DAMAGES IN CONNECTION WITH OR ARISING OUT OF TI RESOURCES OR USE THEREOF, AND REGARDLESS OF WHETHER TI HAS BEEN ADVISED OF THE POSSIBILITY OF SUCH DAMAGES.

You agree to fully indemnify TI and its representatives against any damages, costs, losses, and/or liabilities arising out of your non-compliance with the terms and provisions of this Notice.

This Notice applies to TI Resources. Additional terms apply to the use and purchase of certain types of materials, TI products and services. These include; without limitation, TI's standard terms for semiconductor products (<http://www.ti.com/sc/docs/stdterms.htm>), [evaluation modules](#), and [samples](http://www.ti.com/sc/docs/sampterm.htm) (<http://www.ti.com/sc/docs/sampterm.htm>).

Mailing Address: Texas Instruments, Post Office Box 655303, Dallas, Texas 75265
Copyright © 2017, Texas Instruments Incorporated