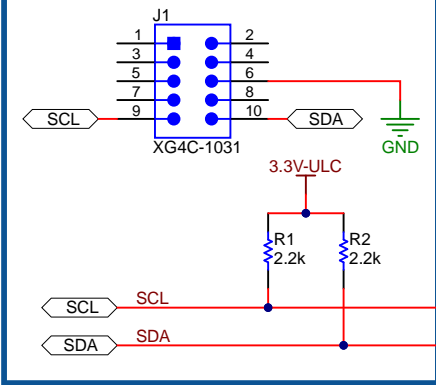
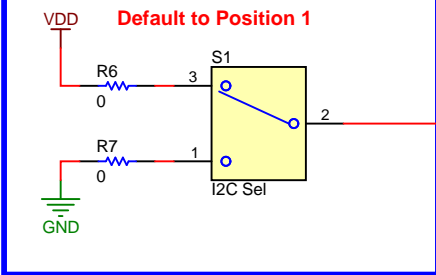


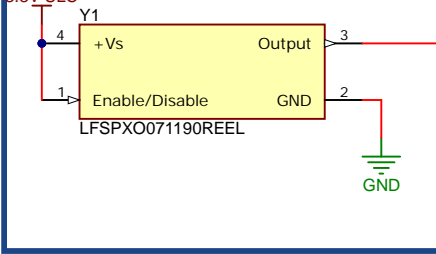
I2C & USB2ANY CONNECTION



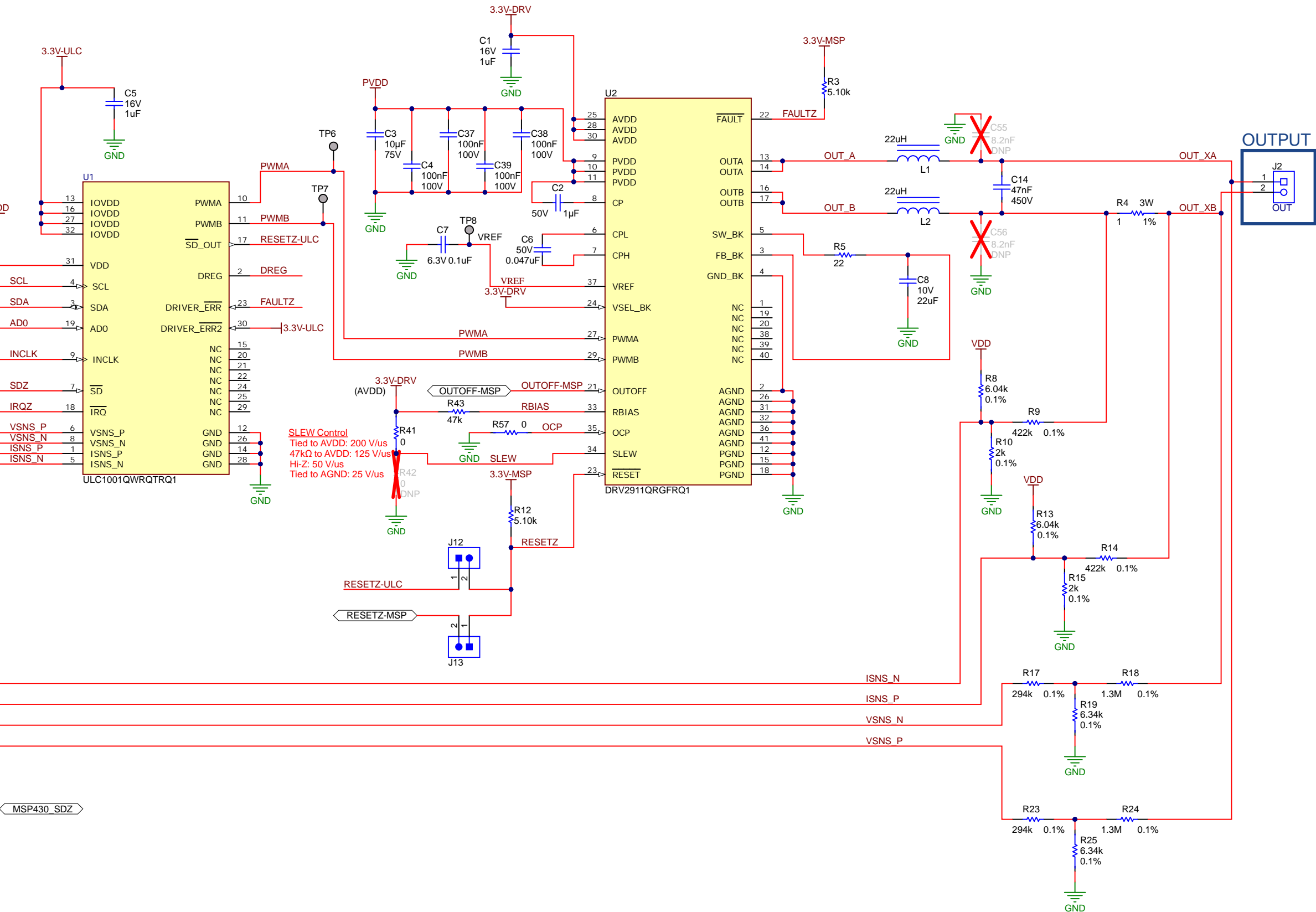
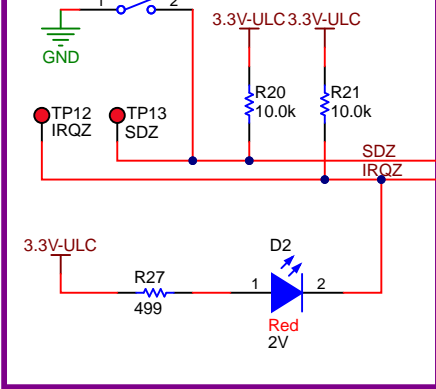
I2C ADDRESS SELECT



INCLK-10MHz



SHUTDOWN AND INTERRUPT

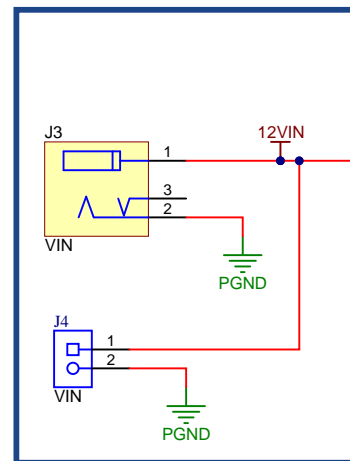


Texas Instruments and/or its licensors do not warrant the accuracy or completeness of this specification or any information contained therein. Texas Instruments and/or its licensors do not warrant that this design will meet the specifications, will be suitable for your application or fit for any particular purpose, or will operate in an implementation. Texas Instruments and/or its licensors do not warrant that the design is production worthy. You should completely validate and test your design implementation to confirm the system functionality for your application.

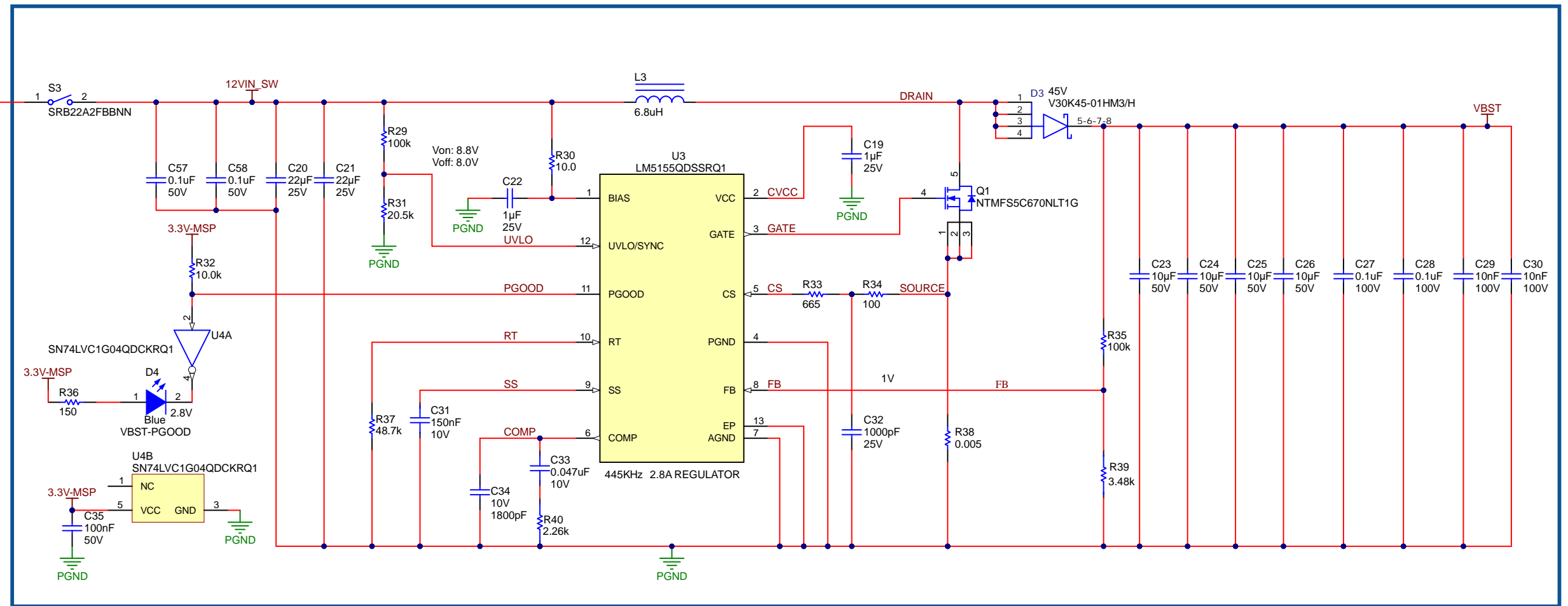
Orderable: ULC1001-DRV2911EVM	Designed for: Public Release	Mod. Date: 8/2/2024
TID #: N/A	Project Title: ULC1001-DRV2911EVM	
Number: AMPS211	Rev: B	Sheet Title: AMPS211B_DUT
SVN Rev: Not in version control	Assembly Variant: 001	Sheet: 1 of 4
Drawn By:	File: AMPS211B_DUT.SchDoc	Size: B
Engineer:	Contact: http://www.ti.com/support	



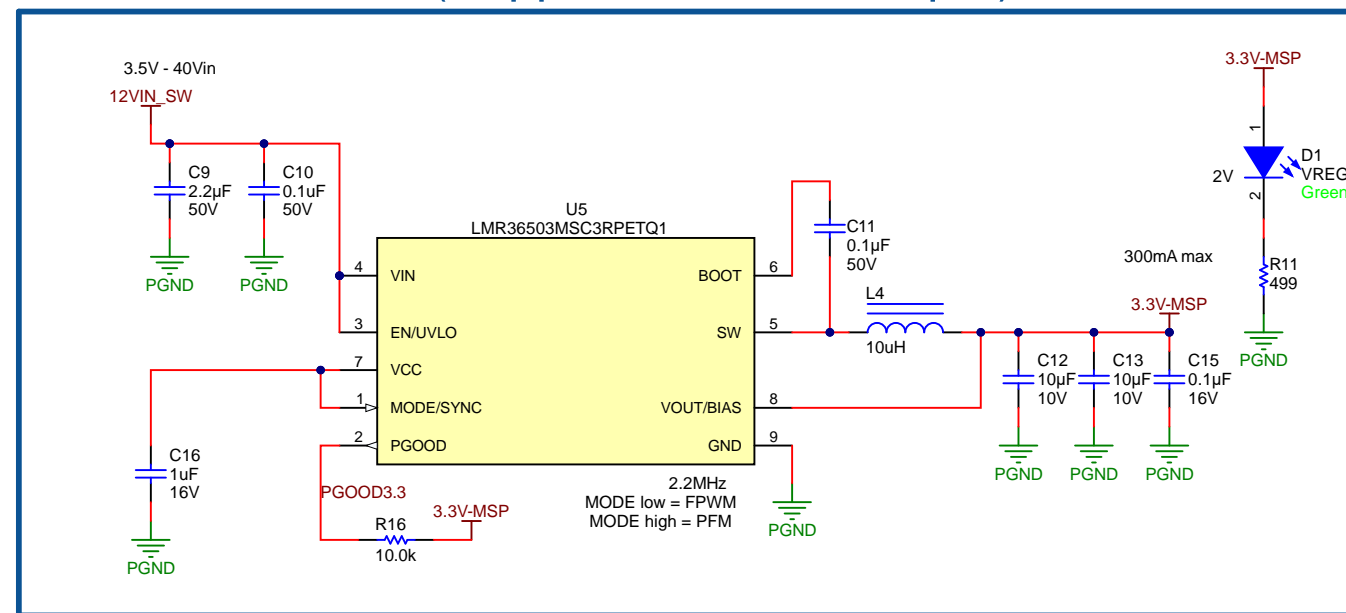
INPUT



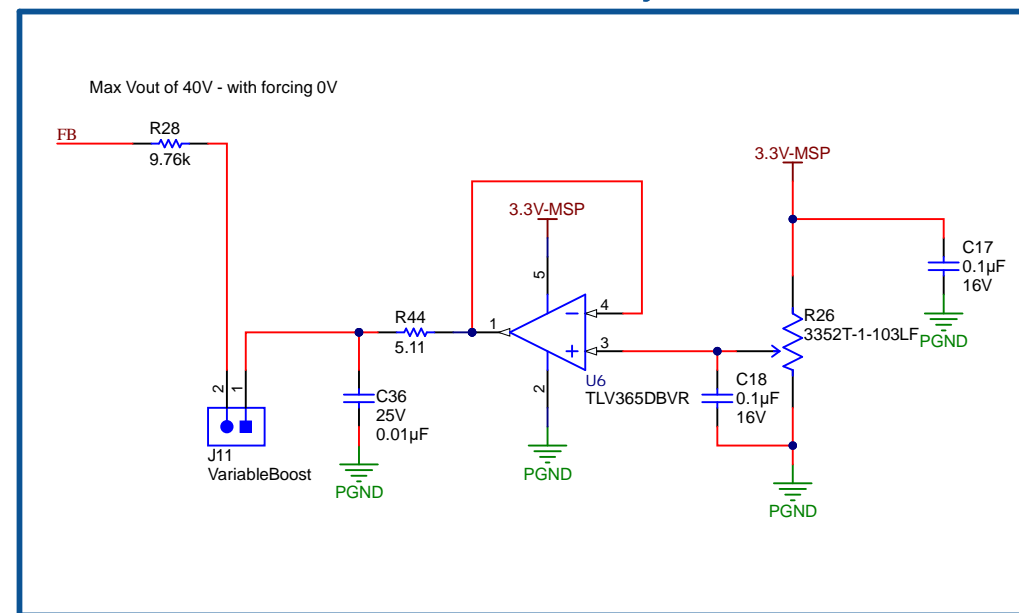
PVDD Boost Output (Supports 9V-15V Input)



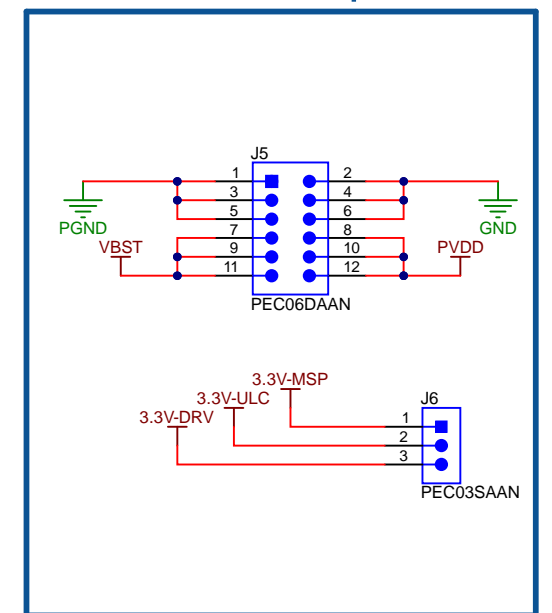
3.3V Buck (Supports 3.5V-40V Input)



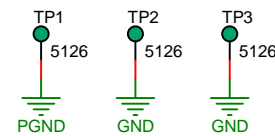
Boost Vout Adjust



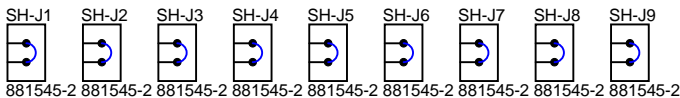
Power Jumpers



GROUND TESTPOINTS

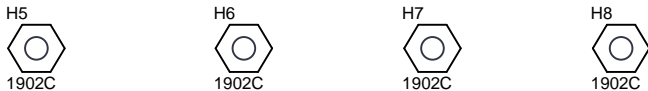
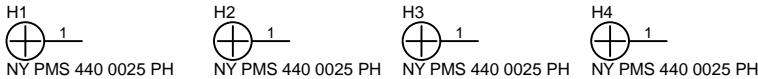


SHUNTS, 100 mil



Shunt table

Designator	Header Ref Des	Position
SH1	J7	1-2
SH2	J9	1-2
SH-J1	J5	5-6
SH-J2	J5	9-10
SH-J3	J5	7-8
SH-J4	J5	1-2
SH-J5	J5	3-4
SH-J6	J5	11-12
SH-J7	J6	3-2
SH-J8	J13	1-2
SH-J9	J11	1-2



PCB Number: AMPS211
PCB Rev: B



LBL1
PCB Label
THT-14-423-10
Size: 0.65" x 0.20 "

ZZ1
Label Assembly Note
This Assembly Note is for PCB labels only

ZZ2
Assembly Note
These assemblies are ESD sensitive, ESD precautions shall be observed.

ZZ3
Assembly Note
These assemblies must be clean and free from flux and all contaminants. Use of no clean flux is not acceptable.

ZZ4
Assembly Note
These assemblies must comply with workmanship standards IPC-A-610 Class 2, unless otherwise specified.

ZZ5
Assembly Note
Indication provided for the D* components at their cathode side.

Orderable: ULC1001-DRV2911EVM		Designed for: Public Release	Mod. Date: 8/2/2024
TID #:	N/A	Project Title: ULC1001-DRV2911EVM	
Number:	AMPS211	Rev:	B
SVN Rev: Not in version control		Assembly Variant: 001	Sheet: 4 of 4
Drawn By:	File: AMPS211B_Hardware.SchDoc		Size: B
Engineer:	Contact: http://www.ti.com/support		

Texas Instruments and/or its licensors do not warrant the accuracy or completeness of this specification or any information contained therein. Texas Instruments and/or its licensors do not warrant that this design will meet the specifications, will be suitable for your application or fit for any particular purpose, or will operate in an implementation. Texas Instruments and/or its licensors do not warrant that the design is production worthy. You should completely validate and test your design implementation to confirm the system functionality for your application.

1

2

3

4

5

6