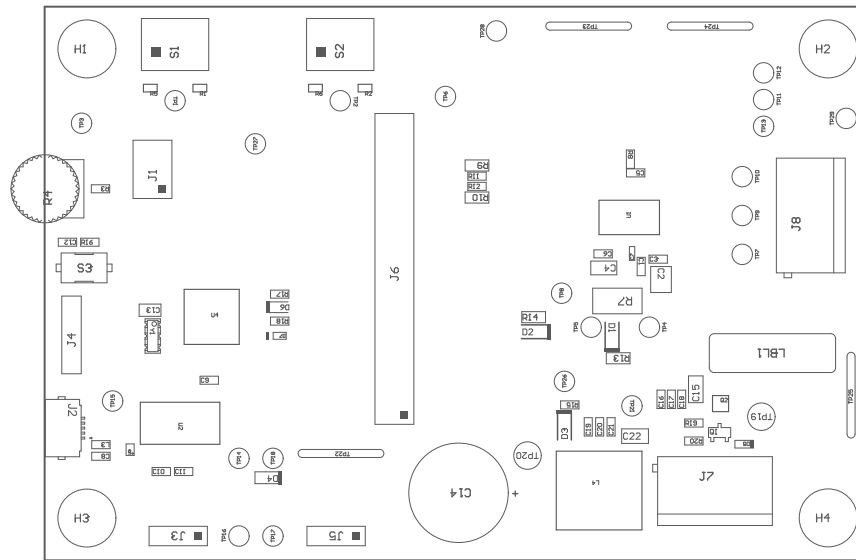


224 ■ These assemblies must comply with workmanship standards IPC-A-610 Class 2, unless otherwise specified.



COMPONENTS MARKED 'DNP' SHOULD NOT BE POPULATED.
ASSEMBLY VARIANT: 001

PCB VIEWED FROM TOP SIDE	BOARD #: MD097A	REV: Rev1.0	SUN REV: 6d132efd4212892547b3783ef8e4b5180a06cff0 [Locally Modified]
	TID #: N/A		
PLOT NAME = Top Assembly Drawing	GENERATED : 4/18/2024 3:59:40 PM		TEXAS INSTRUMENTS



COMPONENTS MARKED 'DNP' SHOULD NOT BE POPULATED.
ASSEMBLY VARIANT: 001

PCB VIEWED FROM BOTTOM SIDE	BOARD #: MD097A	REV: Rev1.0	SUN REV: 6d132efd4212892547b3783ef8e4b5180a06cff0 [Locally Modified]
	TID #: N/A		
PLOT NAME = Bottom Assembly Drawing	GENERATED : 4/18/2024 3:59:41 PM		TEXAS INSTRUMENTS