

Fab Notes

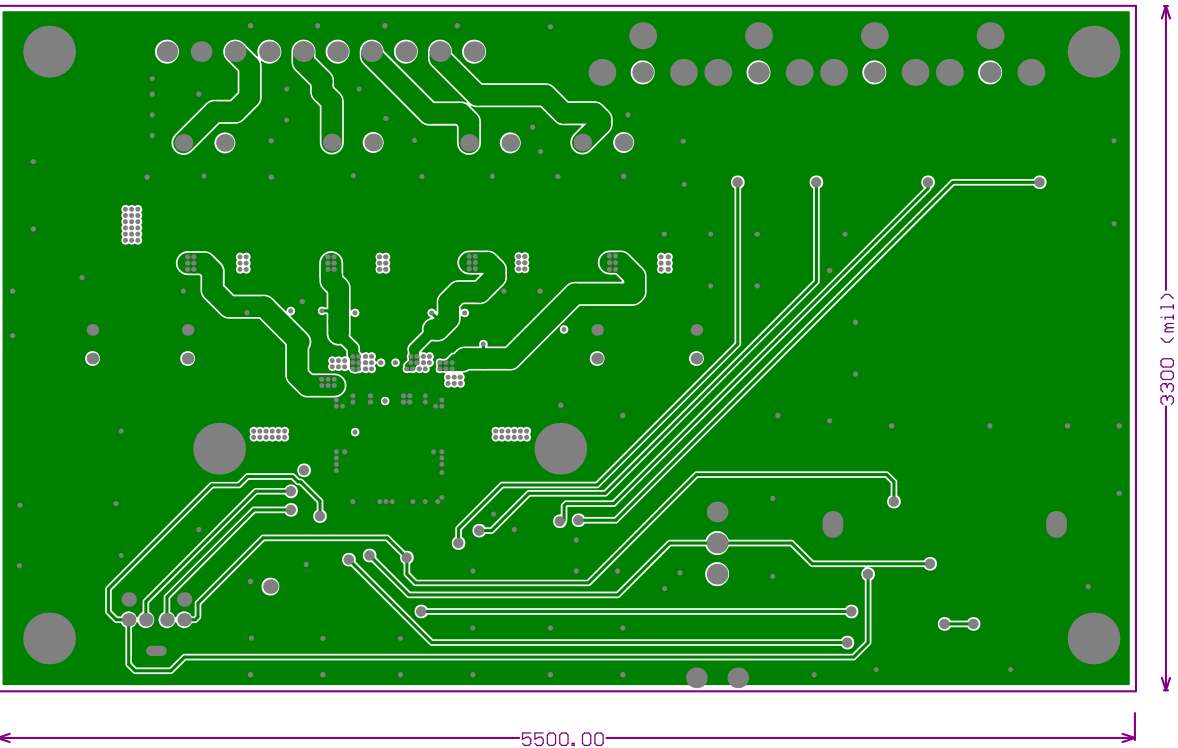
- 1. All plated through holes to be chemically cleaned
- 2. End item to meet or exceed IPC-A-600
- 3. Material: FR-370HR
- 4. Finished Thickness = 0.063 in. +/-0.005
- 5. All copper weight = 1oz
- 6. Position Accuracy = +/- 0.0015
- 7. Apply Blue Enthone soldermask to both sides of board
separate artwork for bottom and top
- 8. Apply White LPI silkscreen to top side of board
- 9. Warpage = +/- 0.005 per linear inch max.
- 10. -
- 11. All holes are plated unless otherwise stated

Unless otherwise specified, Dimensions are in inches

Tolerances: Corners = 0.075 R Max
 Angles = +/- 5 degrees

Hole Diameters: <=0.080 +/-0.003
 >0.080 = +/- 0.004

Dimensional limits apply after plating and coating



Fab Notes

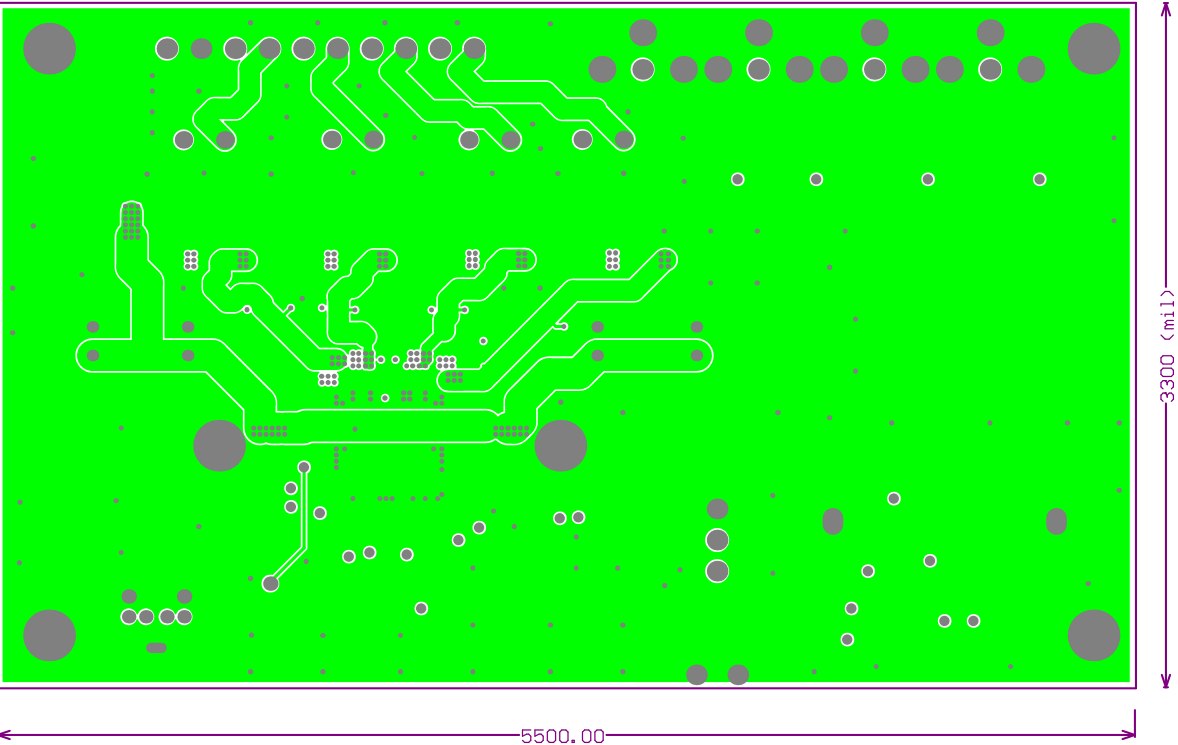
1. All plated through holes to be chemically cleaned
2. End item to meet or exceed IPC-A-600
3. Material: FR-370HR
4. Finished Thickness = 0.063 in. +/-0.005
5. All copper weight = 1oz
6. Position Accuracy = +/- 0.0015
7. Apply Blue Enthone soldermask to both sides of board
separate artwork for bottom and top
8. Apply White LPI silkscreen to top side of board
9. Warpage = +/- 0.005 per linear inch max.
10. -
11. All holes are plated unless otherwise stated

Unless otherwise specified, Dimensions are in inches

Tolerances: Corners = 0.075 R Max
 Angles = +/- 5 degrees

Hole Diameters: <=0.080 +/-0.003
 >0.080 = +/- 0.004

Dimensional limits apply after plating and coating



Fab Notes

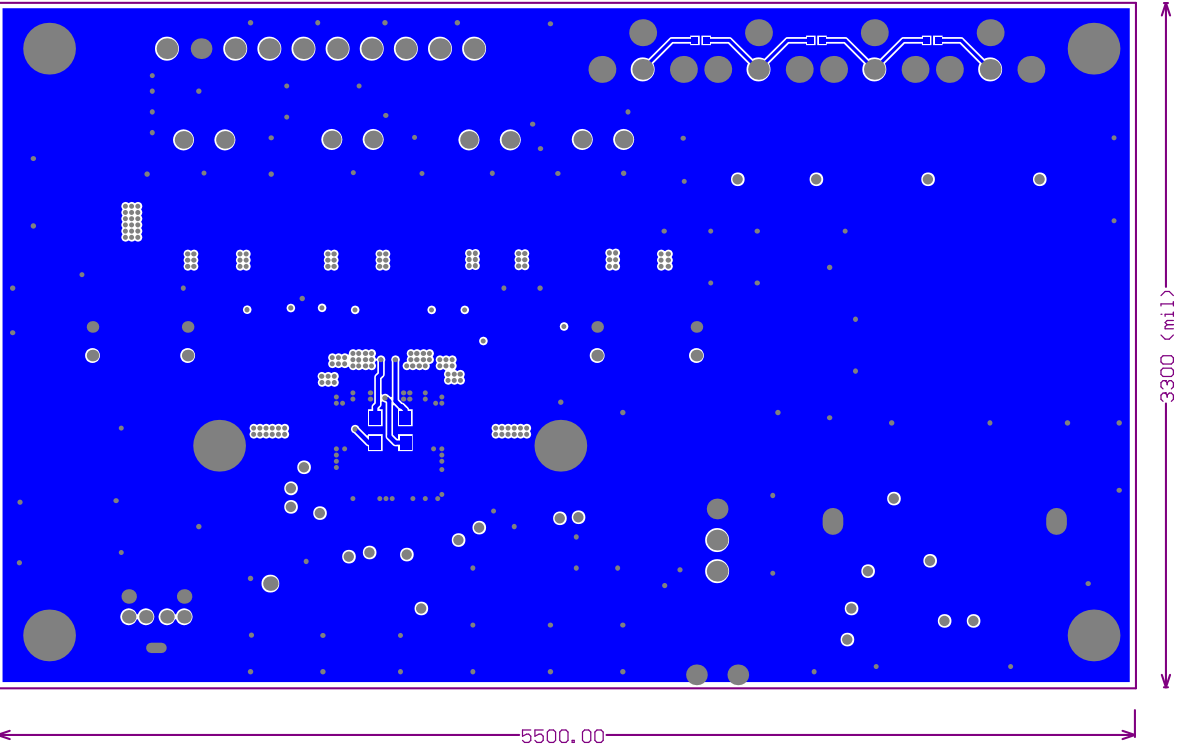
- 1. All plated through holes to be chemically cleaned
- 2. End item to meet or exceed IPC-A-600
- 3. Material: FR-370HR
- 4. Finished Thickness = 0.063 in. +/-0.005
- 5. All copper weight = 1oz
- 6. Position Accuracy = +/- 0.0015
- 7. Apply Blue Enthone soldermask to both sides of board
separate artwork for bottom and top
- 8. Apply White LPI silkscreen to top side of board
- 9. Warpage = +/- 0.005 per linear inch max.
- 10. -
- 11. All holes are plated unless otherwise stated

Unless otherwise specified, Dimensions are in inches

Tolerances: Corners = 0.075 R Max
Angles = +/- 5 degrees

Hole Diameters: <=0.080 +/-0.003
>0.080 = +/- 0.004

Dimensional limits apply after plating and coating



Fab Notes

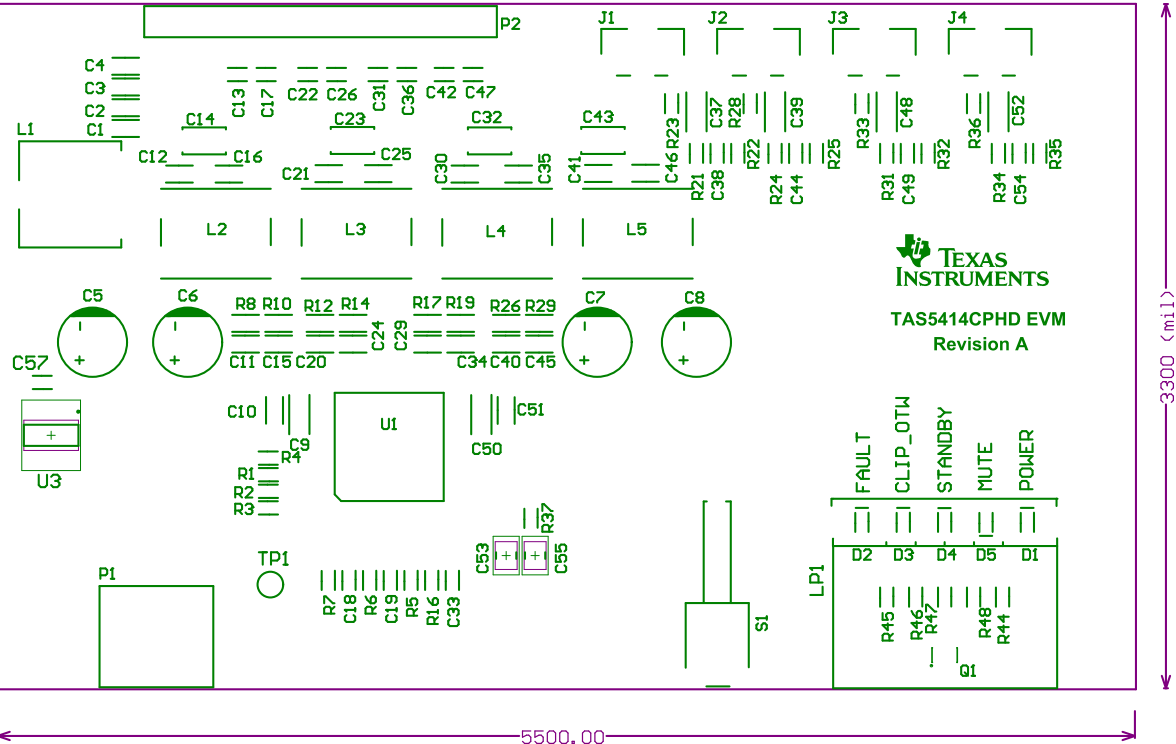
- 1. All plated through holes to be chemically cleaned
- 2. End item to meet or exceed IPC-A-600
- 3. Material: FR-370HR
- 4. Finished Thickness = 0.063 in. +/-0.005
- 5. All copper weight = 1oz
- 6. Position Accuracy = +/- 0.0015
- 7. Apply Blue Enthone soldermask to both sides of board
separate artwork for bottom and top
- 8. Apply White LPI silkscreen to top side of board
- 9. Warpage = +/- 0.005 per linear inch max.
- 10. -
- 11. All holes are plated unless otherwise stated

Unless otherwise specified, Dimensions are in inches

Tolerances: Corners = 0.075 R Max
 Angles = +/- 5 degrees

Hole Diameters: <=0.080 +/-0.003
 >0.080 = +/- 0.004

Dimensional limits apply after plating and coating



Fab Notes

1. All plated through holes to be chemically cleaned
2. End item to meet or exceed IPC-A-600
3. Material: FR-370HR
4. Finished Thickness = 0.063 in. +/-0.005
5. All copper weight = 1oz
6. Position Accuracy = +/- 0.0015
7. Apply Blue Enthone soldermask to both sides of board
separate artwork for bottom and top
8. Apply White LPI silkscreen to top side of board
9. Warpage = +/- 0.005 per linear inch max.
10. -
11. All holes are plated unless otherwise stated

Unless otherwise specified, Dimensions are in inches

Tolerances: Corners = 0.075 R Max
Angles = +/- 5 degrees

Hole Diameters: <=0.080 +/-0.003
>0.080 = +/- 0.004

Dimensional limits apply after plating and coating



Fab Notes

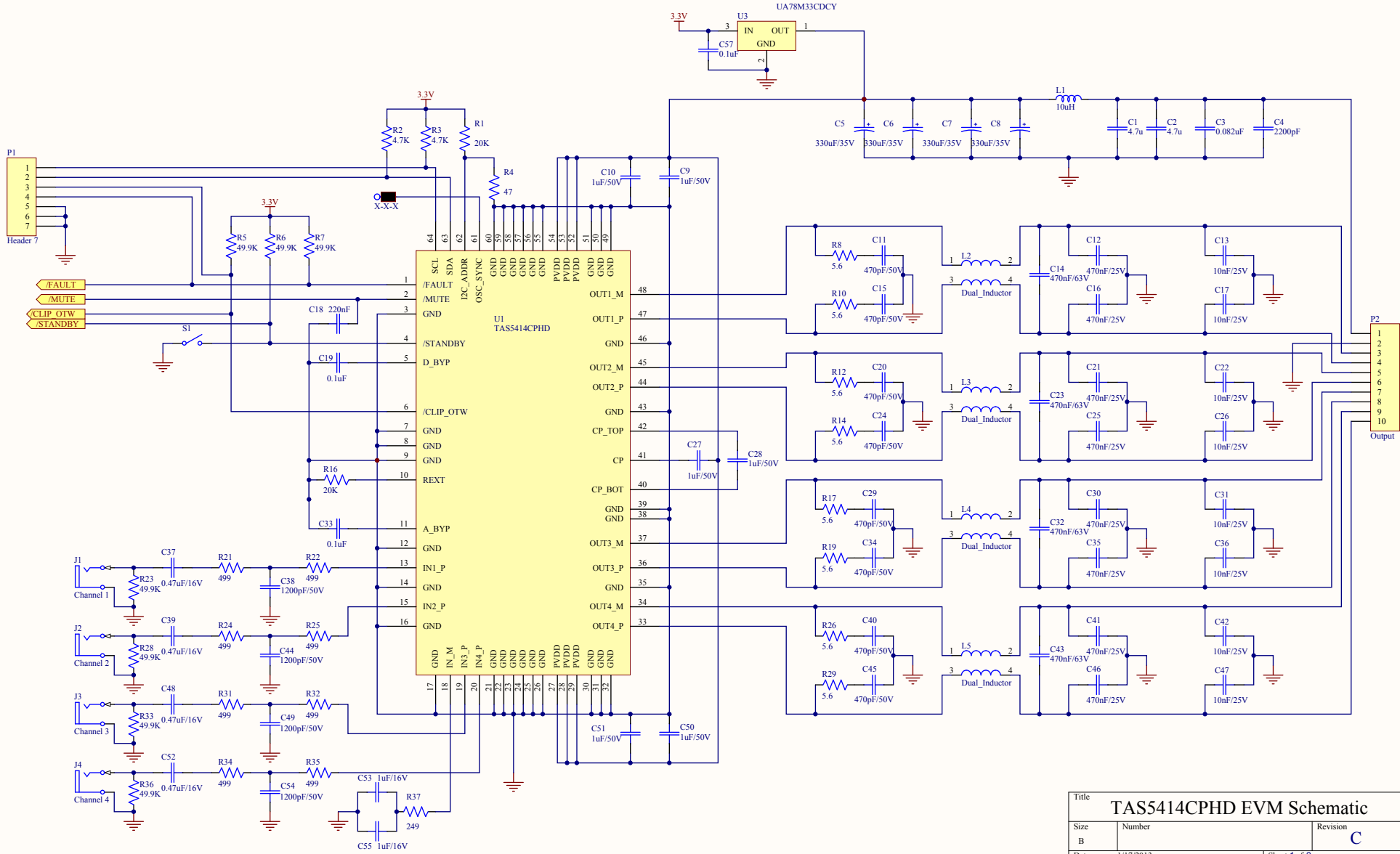
- 1. All plated through holes to be chemically cleaned
- 2. End item to meet or exceed IPC-A-600
- 3. Material: FR-370HR
- 4. Finished Thickness = 0.063 in. +/-0.005
- 5. All copper weight = 1oz
- 6. Position Accuracy = +/- 0.0015
- 7. Apply Blue Enthone soldermask to both sides of board
separate artwork for bottom and top
- 8. Apply White LPI silkscreen to top side of board
- 9. Warpage = +/- 0.005 per linear inch max.
- 10. -
- 11. All holes are plated unless otherwise stated

Unless otherwise specified, Dimensions are in inches

Tolerances: Corners = 0.075 R Max
Angles = +/- 5 degrees

Hole Diameters: <=0.080 +/-0.003
>0.080 = +/- 0.004

Dimensional limits apply after plating and coating



Title		
TAS5414CPHD EVM Schematic		
Size	Number	Revision
B		C
Date:	1/17/2013	Sheet 1 of 2
File:	C:\Users\...\.original SchDoc	Drawn By: Gregg Scott

A

B

C

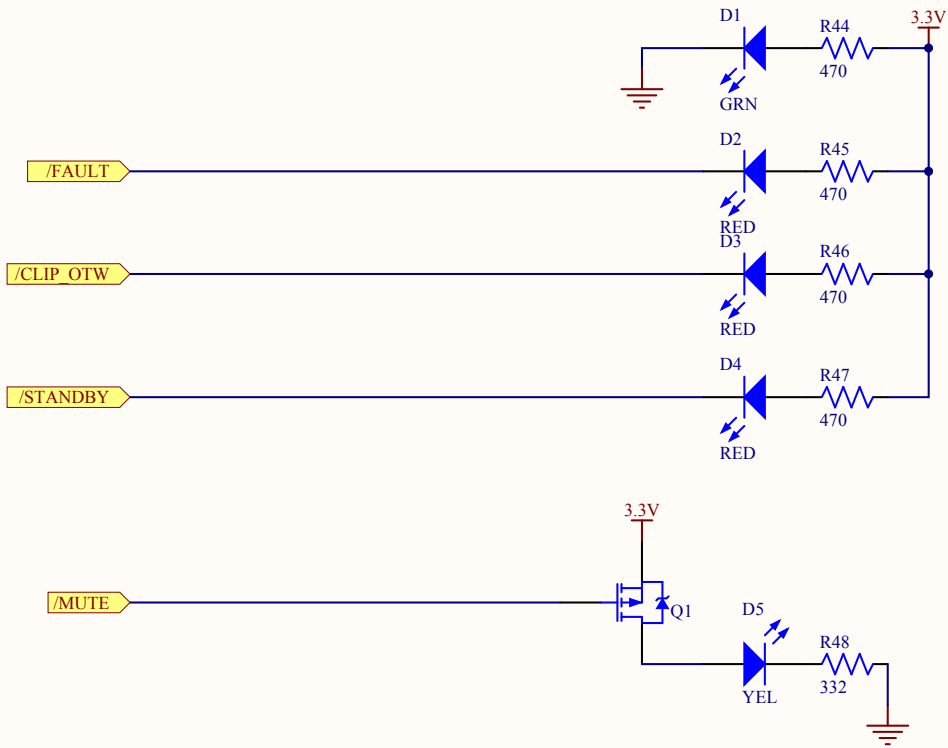
D

A

B

C

D



Title			TAS5414CPHD EVM Schematic	
Size	Number		Revision	
A			C	
Date:	1/17/2013		Sheet2 of 2	
File:	C:\Users\...\Sheet2_original.SchDoc		Drawn By: Gregg Scott	