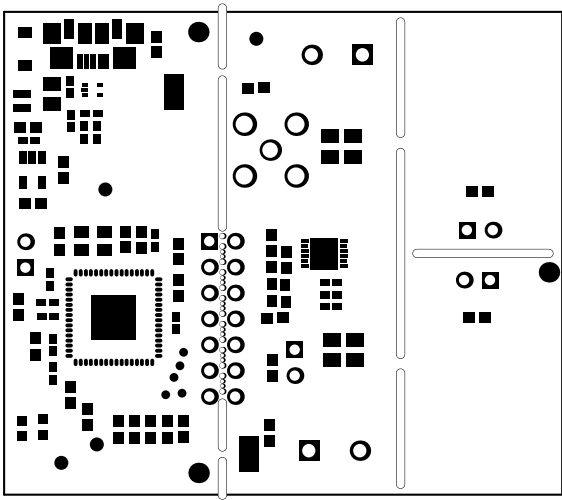
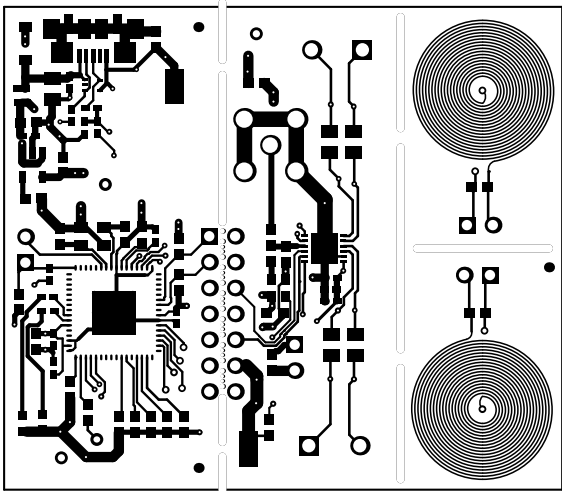


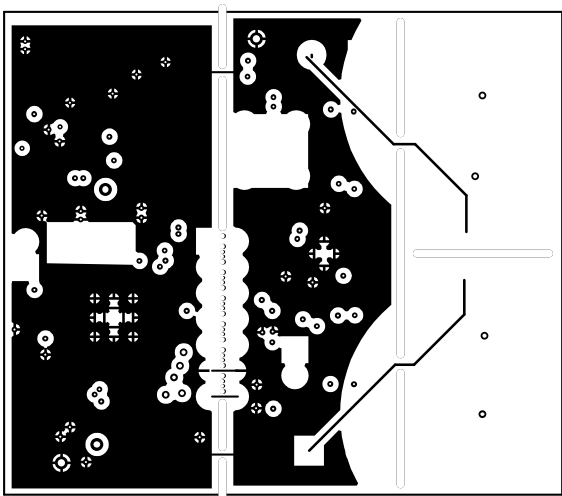
ALL ARTWORK VIEWED FROM TOP SIDE	BOARD #: SU601147	REV: B	SUN REV: Not In VersionControl
LAYER NAME = Top Overlay			
PLOT NAME = Top Overlay	GENERATED : 3/5/2015 6:10:27 PM		TEXAS INSTRUMENTS



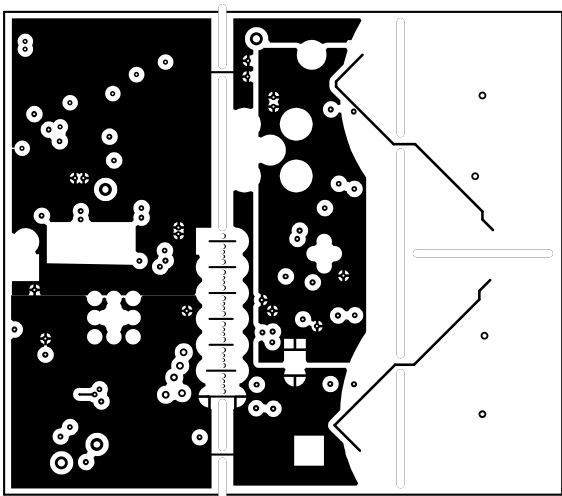
ALL ARTWORK VIEWED FROM TOP SIDE	BOARD #: SU601147	REV: B	SVN REV: Not In VersionControl
LAYER NAME = Top Solder			
PLOT NAME = Top Solder Mask	GENERATED : 3/5/2015 6:10:28 PM	TEXAS INSTRUMENTS	



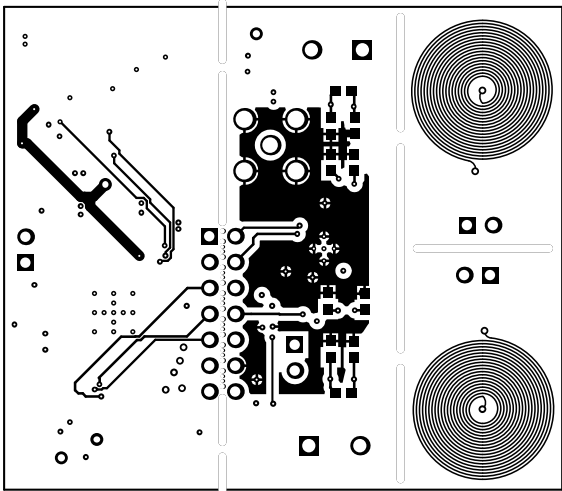
ALL ARTWORK VIEWED FROM TOP SIDE	BOARD #: SU601147	REV: B	SVN REV: Not In VersionControl
LAYER NAME = Top Layer			
PLOT NAME = Top Layer	GENERATED : 3/5/2015 6:10:28 PM	TEXAS INSTRUMENTS	



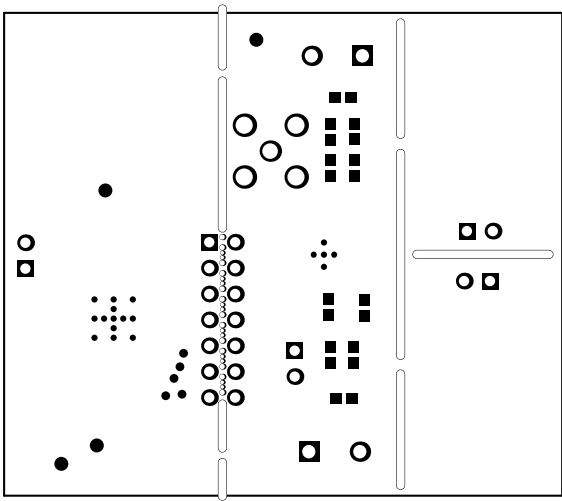
ALL ARTWORK VIEWED FROM TOP SIDE	BOARD #: SU601147	REV: B	SUN REV: Not In VersionControl
LAYER NAME = M1 Board Outline			
PLOT NAME = MidLayer1	GENERATED : 3/5/2015 6:10:29 PM	TEXAS INSTRUMENTS	



ALL ARTWORK VIEWED FROM TOP SIDE	BOARD #: SU601147	REV: B	SVN REV: Not In VersionControl
LAYER NAME = M1 Board Outline			
PLOT NAME = MidLayer2	GENERATED : 3/5/2015 6:10:30 PM	TEXAS INSTRUMENTS	



ALL ARTWORK VIEWED FROM TOP SIDE	BOARD #: SU601147	REV: B	SVN REV: Not In VersionControl
LAYER NAME = Bottom Layer			
PLOT NAME = Bottom Layer	GENERATED : 3/5/2015 6:10:30 PM	TEXAS INSTRUMENTS	



ALL ARTWORK VIEWED FROM TOP SIDE	BOARD #: SU601147	REV: B	SUN REV: Not In VersionControl
LAYER NAME = Bottom Solder			
PLOT NAME = Bottom Solder Mask	GENERATED : 3/5/2015 6:10:31 PM	TEXAS INSTRUMENTS	

013mm 119C6 abpctud
013mm 119C6 m1q1p
S 196k2
18 1m1u2196k
2E1K205 13.3mm

MADE IN U.S.
© 2012


C4 C3
C4 C3
C4 C3

C3 C3
C3 C3
C3 C3

C4 C4
C4 C4
C4 C4

CT
AD
ADDA
DS
BTNI
DND
UE.E

not FCC approved for resale.
For evaluation only.

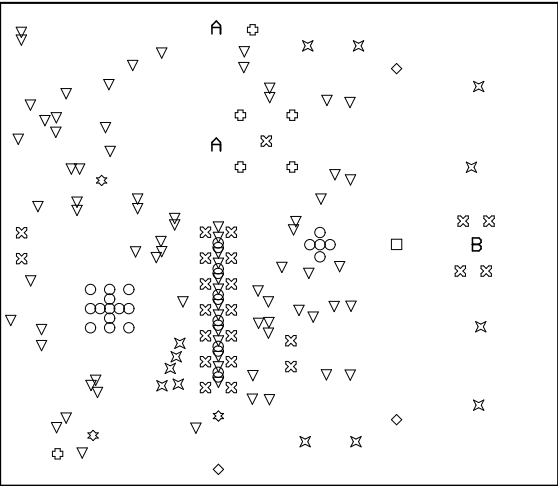
INSTRUMENTS

2N601147 B

LOT

0101

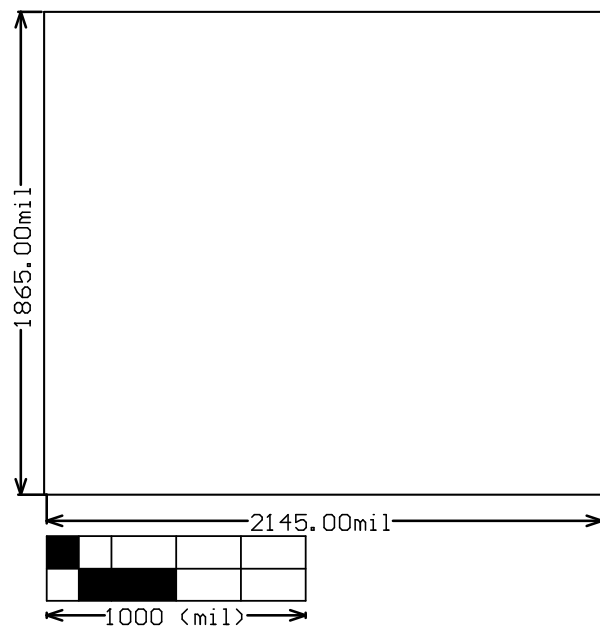
ALL ARTWORK VIEWED FROM TOP SIDE	BOARD #: SU601147	REV: B	SUN REV: Not In VersionControl
LAYER NAME = Bottom Overlay			
PLOT NAME = Bottom Overlay	GENERATED : 3/5/2015 6:10:32 PM	TEXAS INSTRUMENTS	



Symbol	Hit Count	Tool Size	Physical Length	Rout Path Length	Plated	Hole Type
○	18	7.874mil (0.2mm)			PTH	Round
▽	66	8mil (0.203mm)			PTH	Round
○	12	14mil (0.356mm)			NPTH	Round
×	9	15mil (0.381mm)			PTH	Round
▽	13	20mil (0.508mm)			NPTH	Round
*	2	25mil (0.635mm)			PTH	Round
○	2	28mil (0.711mm)			PTH	Round
⊗	22	40mil (1.016mm)			PTH	Round
×	4	51.181mil (1.3mm)			PTH	Round
⊗	1	59.055mil (1.5mm)			PTH	Round
○	4	66.929mil (1.7mm)			PTH	Round
◇	1	31mil (0.787mm)	162mil (4.115mm)	131mil (3.327mm)	NPTH	Slot
*	1	31mil (0.787mm)	200mil (5.08mm)	169mil (4.293mm)	NPTH	Slot
A	1	31mil (0.787mm)	250mil (6.35mm)	219mil (5.563mm)	NPTH	Slot
◇	2	31mil (0.787mm)	460mil (11.684mm)	429mil (10.897mm)	NPTH	Slot
B	1	31mil (0.787mm)	540mil (13.716mm)	509mil (12.929mm)	NPTH	Slot
A	1	31mil (0.787mm)	600mil (15.24mm)	569mil (14.453mm)	NPTH	Slot
□	1	31mil (0.787mm)	810mil (20.574mm)	779mil (19.787mm)	NPTH	Slot
161 Total						

Slot definitions : Rout Path Length = Calculated from tool start centre position to tool end centre position.
Physical Length = Rout Path Length + Tool Size = Slot length as defined in the PCB layout

ALL ARTWORK VIEWED FROM TOP SIDE	BOARD #: SU601147	REV: B	SUN REV: Not In VersionControl
LAYER NAME = Drill Drawing			
PLOT NAME = Drill Drawing	GENERATED : 3/5/2015 6:10:32 PM	TEXAS INSTRUMENTS	



ALL ARTWORK VIEWED FROM TOP SIDE	BOARD #: SU601147	REV: B	SUN REV: Not In VersionControl
LAYER NAME = M2 Board Dimensions			
PLOT NAME = Board Dimensions	GENERATED : 3/5/2015 6:10:33 PM	TEXAS INSTRUMENTS	