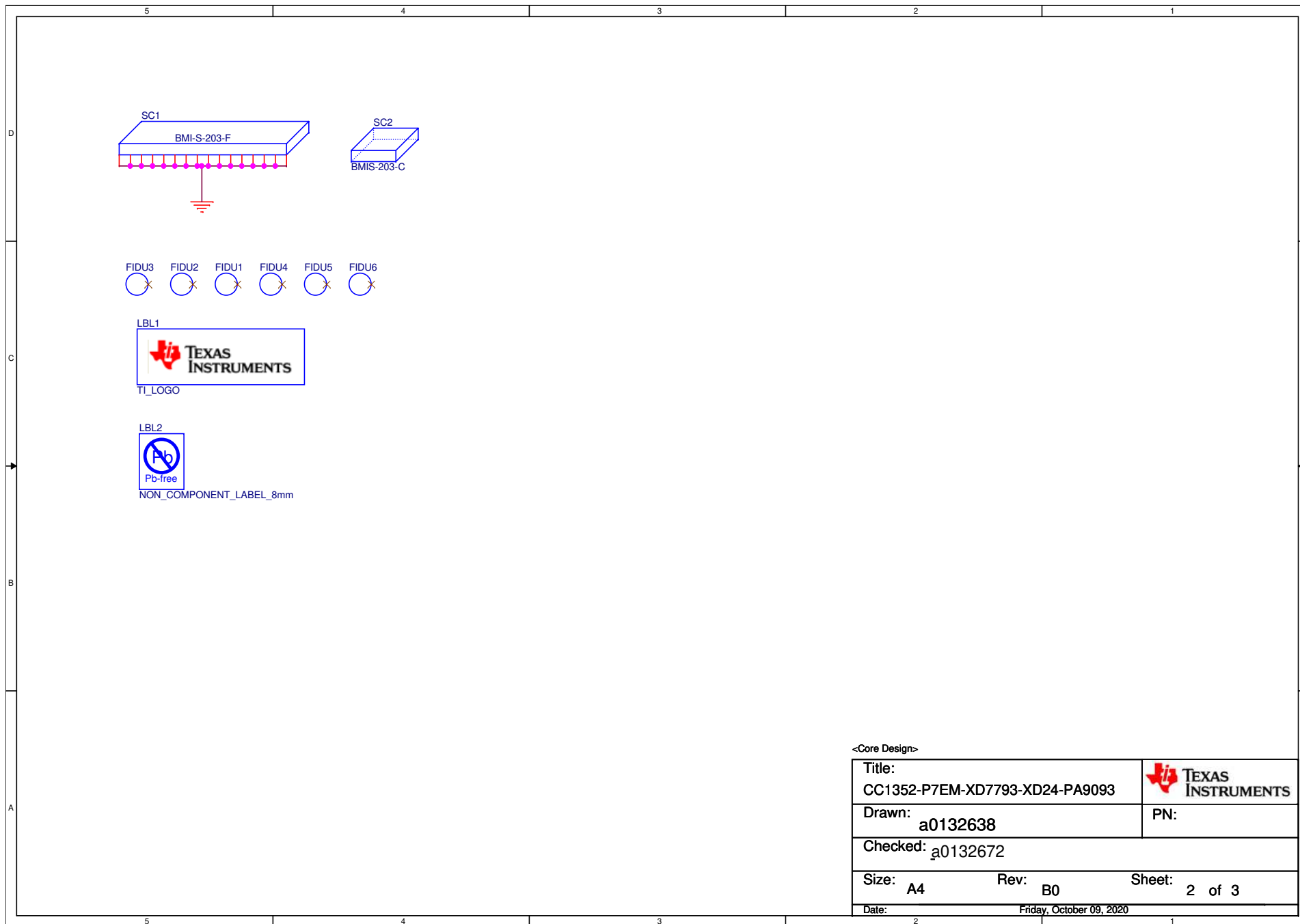



Title:		Texas Instruments	
CC1352-P7EM-XD7793-XD24-PA9093			
Drawn:		a0132638	
Checked:		a0132672	
Size:		Rev:	Sheet:
A3		B0	1 of 3
Date:		Friday, October 09, 2020	



<Core Design>		
Title:	CC1352-P7EM-XD7793-XD24-PA9093	
Drawn:	a0132638	PN:
Checked:	a0132672	
Size:	A4	Rev: B0 Sheet: 2 of 3
Date:	Friday, October 09, 2020	


A0

- Based on CC1352PEM-XD7793-XD24-PA9093 revision C0.
- Changed C11,C15,C81,C91 from GRM1555C1H120JA01D to GJM1555C1H120JB01D
- Changed C12,C21 from GRM1555C1H1R1BA01D to GJM1555C1H1R1BB01D
- Changed C13,C14 from GRM1555C1H1R0BA01D to GJM1555C1H1R0BB01D
- Changed C31 from GRM1555C1H1R2BA01D to GJM1555C1H1R2BB01D
- Changed C32,C37,C482 from GRM1555C1H101JA01D to GRT1555C1H101JA02D
- Changed C33,C41 from GRM1555C1H3R0CA01D to GJM1555C1H3R0CB01D
- Changed C34,C56,C57 from GRM1555C1H2R7CA01D to GJM1555C1H2R7CB01D
- Changed C35 from GRM1555C1H5R6CA01D to GJM1555C1H5R6CB01D
- Changed C51,C58 from GRM1555C1H820JA01D to GRT1555C1H820JA02D
- Changed C52 from GRM155R71E103KA01D to GRM155R71H103MA88D
- Changed C53,C61 from GRM1555C1H2R4CA01D to GJM1555C1H2R4CB01D
- Changed C54 from GRM1555C1H3R9CA01D to GJM1555C1H3R9CB01D
- Changed C55 from GRM1555C1HR70BA01D to GJM1555C1HR70BB01D
- Changed C231 from GRM155R61E105KA12D to GRM155C81C105KE11D
- Changed C1,C331,C341 from GRM188R60U226MEA0D to GRM188C80U226ME15D
- Changed C461,C471 from GRM1555C1H7R5CA01D to GJM1555C1H7R5CB01D
- Changed U1 from CC1352P1F3RGZR to CC1352P1F64TRGZE
- Changed Y1 from FC-135 32.7680KA-AG0 to TZ1166C
- Changed Y2 from NX2016SA 48.000MHz EXS00A-CS05517 to TZ2365C

B0

- Changed design name from CC1352P1F64EM-XD7793-XD24-P9093 to CC1352-P7EM-XD7793-XD24-PA9093
- Updated CC1352P1F64TRGZE to CC1352P74TORGZR

<Core Design>

Title: CC1352-P7EM-XD7793-XD24-PA9093		 TEXAS INSTRUMENTS
Drawn: a0132638		
Checked: a0132672		
Size: A4	Rev: B0	
Date: Friday, October 09, 2020		