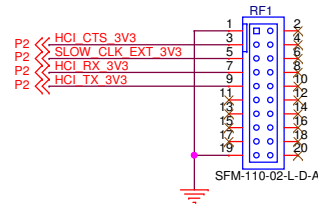
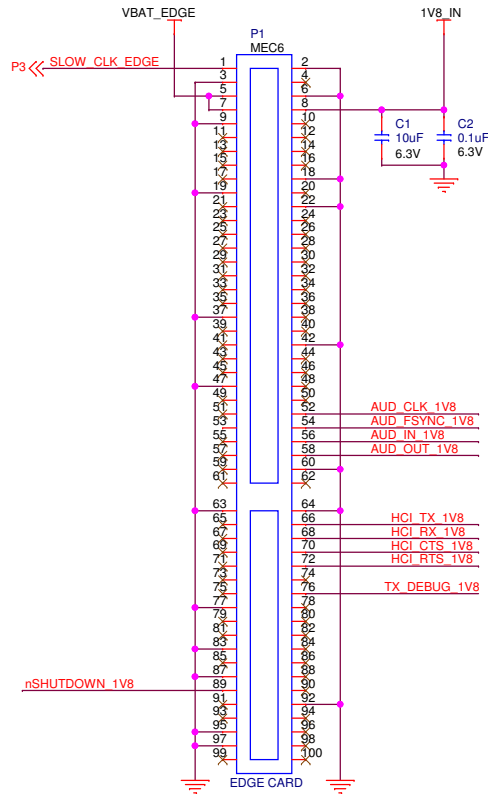
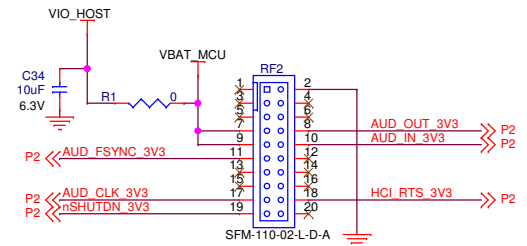


REVISION HISTORY

Added C32, C36
R33 0 ohm resistor was deleted
R33 when installed connected MLDQ_OUT to VBAT_CC
Delete net SLOW_CLK_DBG, connect net SLOW-CLK-EDGE to P2 pin 10.

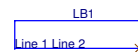
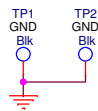
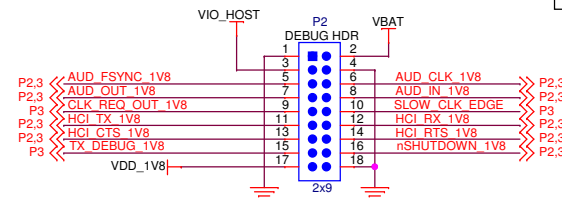


RF1 Connector		RF2 Connector	
Pin#	EM Adapter Pin Assignment	Pin#	EM Adapter Pin Assignment
1	GND	1	+1.8V (Optional)
3	MODULE_UART_CTS	3	+1.8V (Optional)
5	SLOW_CLK	5	+1.8V (Optional)
7	MODULE_UART_RX	7	+3.3V
9	MODULE_UART_TX	9	+3.3V
11	I2C_SDA	11	MODULE_AUDIO_FSYNC
13	I2C_SCL	13	RF_GPIO2
15	SDIO_CLK	15	CC_RSTN
17	SDIO_CMD	17	MODULE_AUDIO_CLK
19	GND	19	WCS_NSHUTD
2	SDIO_D0	2	GND
4	SDIO_D1	4	ANALOG_AUDIO_DATA_LEFT
6	SDIO_D2	6	ANALOG_AUDIO_DATA_RIGHT
8	SDIO_D3	8	MODULE_AUDIO_DATA_OUT
10	RF_GPIO0	10	MODULE_AUDIO_DATA_IN
12	RF_GPIO1	12	USBM
14	SPI_CS0	14	USBP
16	SPI_CLK	16	INC
18	SPI_MOSI	18	MODULE_UART_RTS
20	SPI_MISO	20	RF_GPIO3



Configuration Notes:

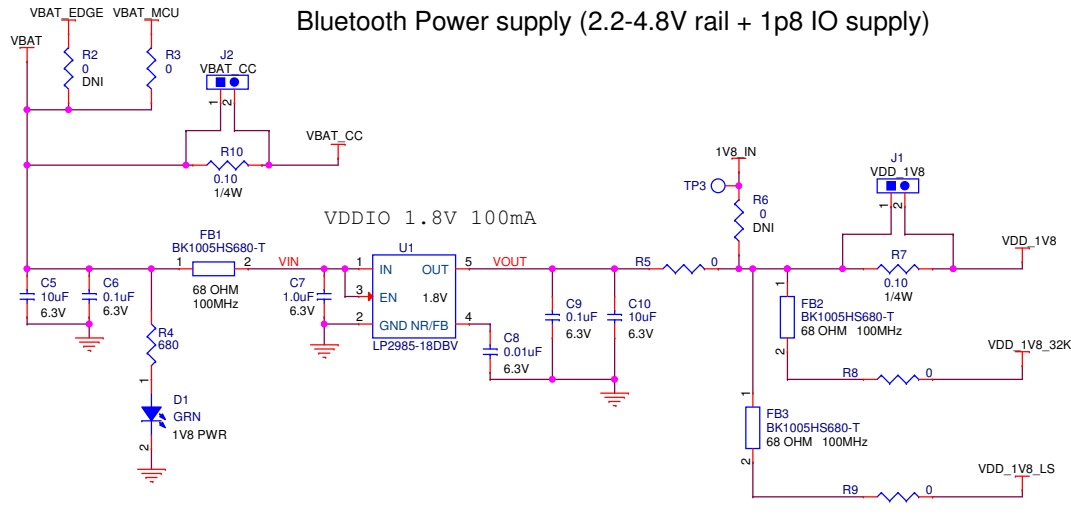
	01-EM	02-COM
RF1	Install	Removed
RF2	Install	Removed



Board Interface

		CC256xQFN-EM		
Designer	CRAIG BOHREN	Title	CC256xQFN-EM	
Drawn By	JOHN MCDOWELL	Size B	EDGE No 6546200	Rev 1.2B
Layout	JOHN MCDOWELL	Date	Wednesday, July 10, 2013	Page 1 of 3

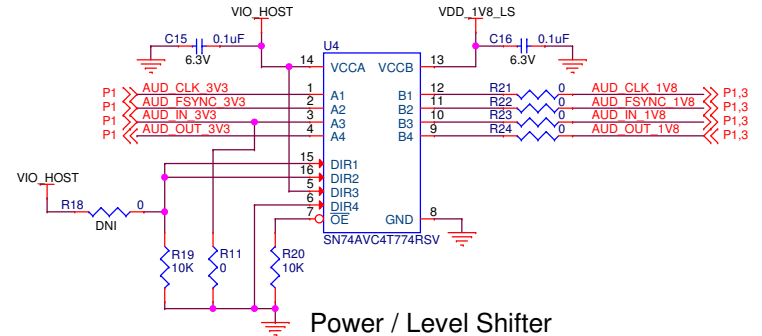
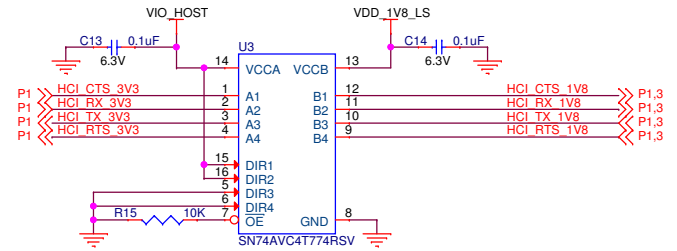
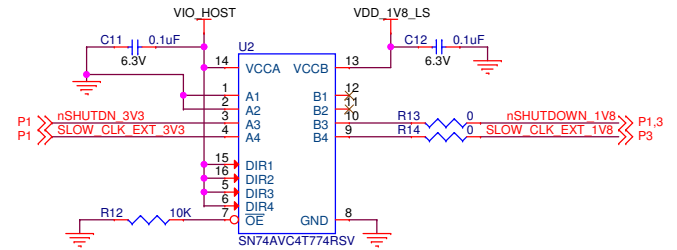
Bluetooth Power supply (2.2-4.8V rail + 1p8 IO supply)



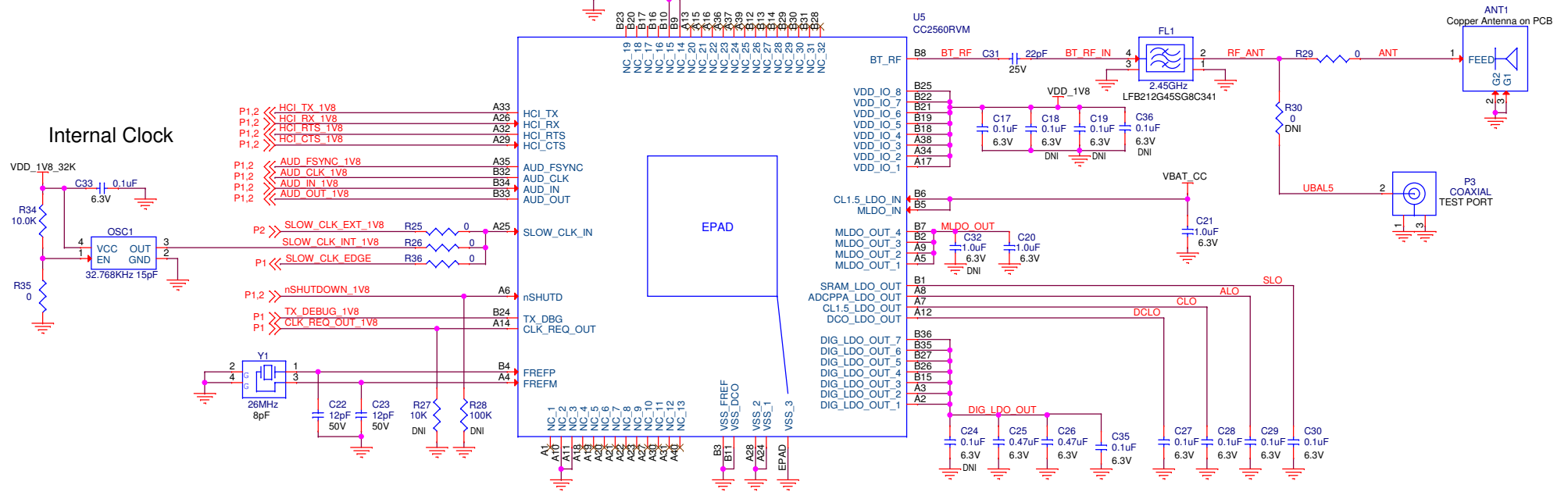
Configuration Notes:

	01-EM	02-COM
R2	Removed	Install
R3	Install	Removed

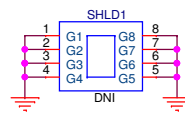
Level Shifters



CC256x HCI Class 1.5 capable Bluetooth device



CC256xQFN



Title CC256xQFN-EM		
Size B	EDGE No 6546200	Rev 1.2B
Date Wednesday, July 10, 2013	Page 3 of 3	