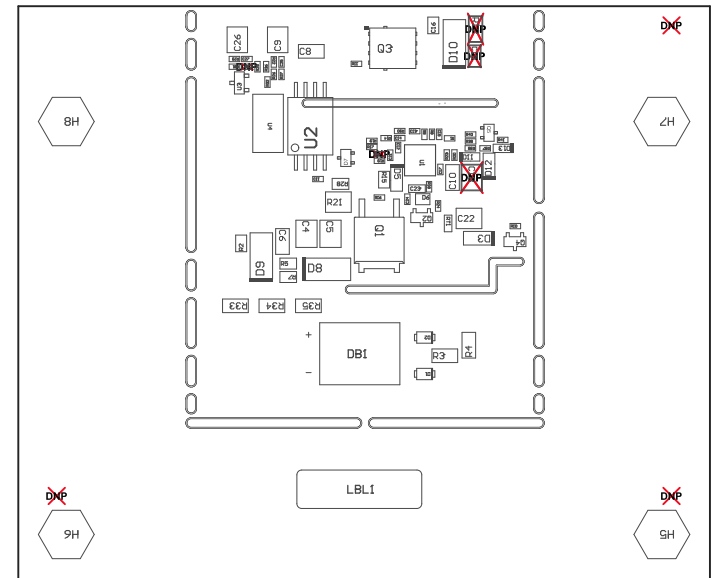


- zz1 ■ These assemblies are ESD sensitive, ESD precautions shall be observed.
- zz2 ■ These assemblies must be clean and free from flux and all contaminants. Use of no clean flux is not acceptable.
- zz3 ■ These assemblies must comply with workmanship standards IPC-A-610 Class 2, unless otherwise specified.
- zz4 ■ Default installation of XCD configuration jumper SH-J1 to be in XCD DISABLED position on J5 (across pins 2-3).

COMPONENTS MARKED 'DNP' SHOULD NOT BE POPULATED.
ASSEMBLY VARIANT: 001

PCB VIEWED FROM TOP SIDE	BOARD #: HVP053	REV: B	SUN REV: Not In VersionControl
	TID #: N/A		
PLOT NAME = Top Assembly Drawing	GENERATED : 5/13/2022 12:35:25 PM	TEXAS INSTRUMENTS	



COMPONENTS MARKED 'DNP' SHOULD NOT BE POPULATED.
ASSEMBLY VARIANT: 001

PCB VIEWED FROM BOTTOM SIDE	BOARD #: HVP053	REV: B	SUN REV: Not In VersionControl
	TID #: N/A		
PLOT NAME = Bottom Assembly Drawing	GENERATED : 5/13/2022 12:35:28 PM	TEXAS INSTRUMENTS	