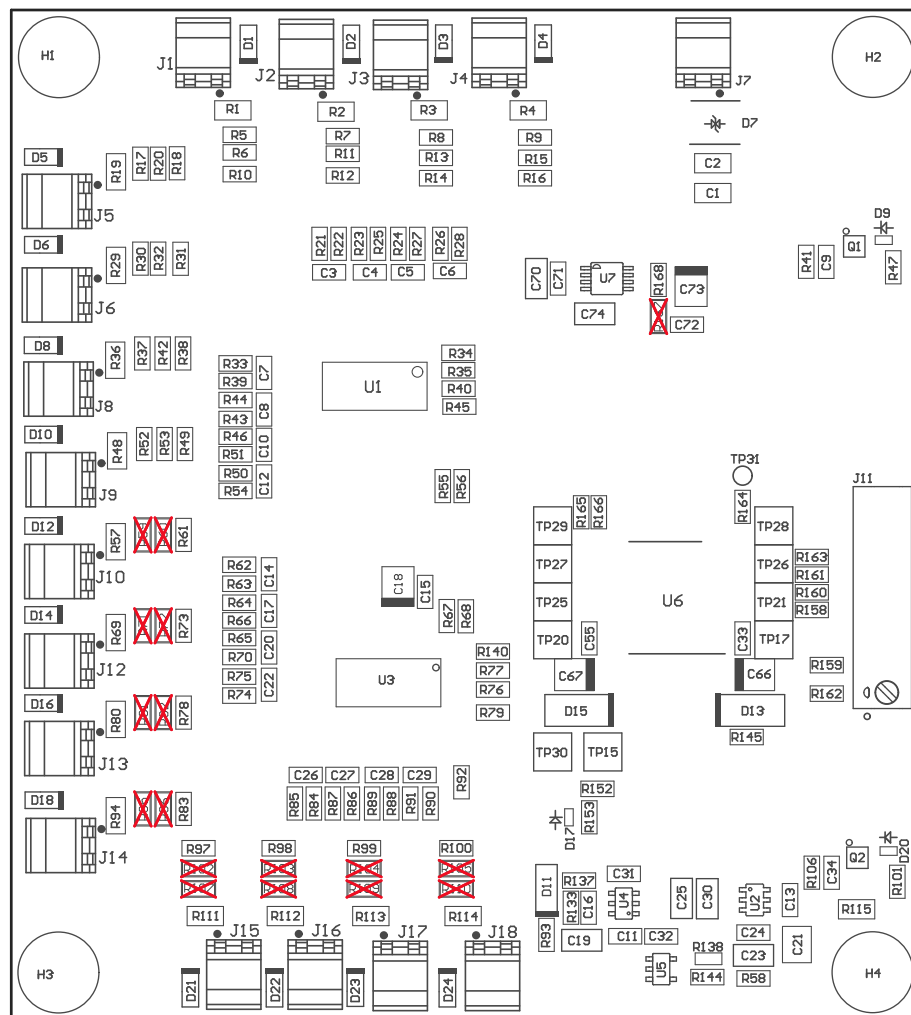
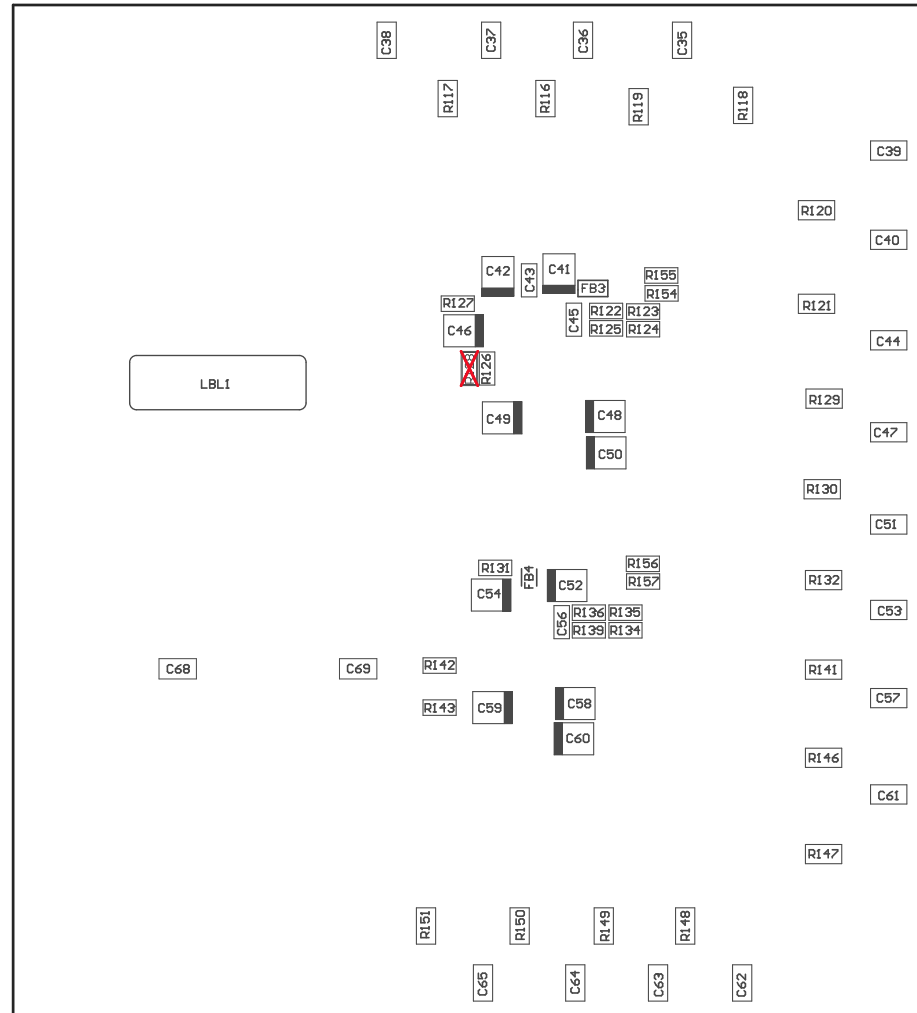


ZZ4 ■ These assemblies must comply with workmanship standards IPC-A-610 Class 2, unless otherwise specified.



ASSEMBLY VARIANT: 001

PCB VIEWED FROM TOP SIDE	BOARD #:TIDA-01214_DAI5Y	REV: E1	SUN REV: Not In VersionControl
IGNORE -> Assembly Top	TID #: TIDA-01214		
PLOT NAME = Top Assembly Drawing	GENERATED : 3/3/2017 6:46:55 PM		TEXAS INSTRUMENTS



COMPONENTS MARKED 'DNP' SHOULD NOT BE POPULATED.
 ASSEMBLY VARIANT: 001

PCB VIEWED FROM BOTTOM SIDE	BOARD #: TIDA-01214_DAI5Y	REV: E1	SUN REV: Not In VersionControl
	TID #: TIDA-01214	IGNORE ->	Assembly Bottom
PLOT NAME = Bottom Assembly Drawing	GENERATED : 3/3/2017	6:46:58 PM	TEXAS INSTRUMENTS