

FAB NOTES:

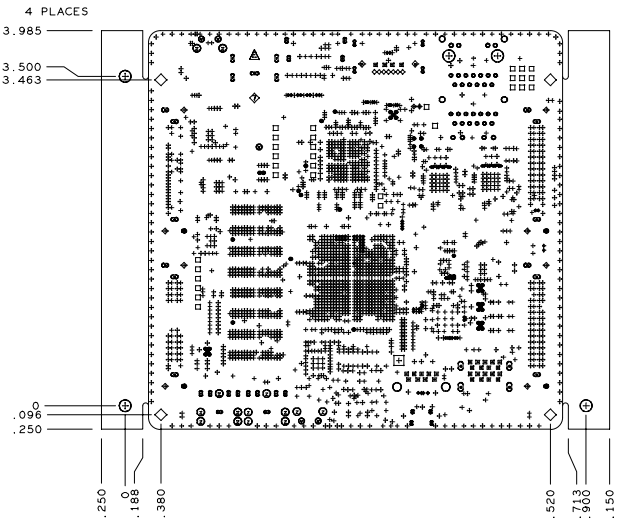
- ALL DIMENSIONS ARE IN INCHES, UNLESS OTHERWISE NOTED.
- THE PWB SHALL BE FABRICATED TO IPC-6012, CLASS 2 AND WORKMANSHIP SHALL CONFORM TO IPC-A-600, CLASS 2, CURRENT REVISIONS.
- BOARD MATERIAL SHALL BE 180 Tg/350 Td ISOLA FR-370HR OR EQUIVALENT, RoHS COMPLIANT AND LEAD FREE ASSEMBLY CAPABLE. BOARD MATERIAL SHALL MEET OR EXCEED IPC-4101B. COLOR: NATURAL.
- BOARD MATERIAL & CONSTRUCTION TO BE U.L. APPROVED AND MARKED ON THE FINISHED BOARD.
- MINIMUM COPPER WALL THICKNESS OF PLATED-THRU HOLES TO BE .001 INCH, WITH A MINIMUM ANNULAR RING OF .002 INCH.
- OVERALL BOARD THICKNESS TO BE .062 +/- 10% AND APPLIES AFTER ALL LAMINATION AND PLATING PROCESSES, MEASURED FROM COPPER TO COPPER.
- MAX. WARP & TWIST TO BE .0075 INCHES PER INCH.
- BOARD MUST BE ELECTRICALLY TESTED USING SUPPLIED IPC-D-356 NETLIST.
- FOR BACKDRILL INFO. SEE GERBER FILE (BACKDRILL_12-4.ART).

FINISHED AS SMOOTH WALL BY VENDOR.

PROCESS NOTES:

- PLATE ALL EXPOSED AREAS WITH ELECTROLESS IMMERSION GOLD, NICKEL 150 MICROINCHES THK MIN GOLD 5-15 MICROINCHES THK MIN.
- APPLY LPI SOLDERMASK OVER BARE COPPER (SMOBC), COLOR: BLACK. SOLDERMASK SHALL CONFIRM TO IPC-SM-840, CLASS H, CURRENT REV.
- SOLDERMASK ARTWORK HAS ZERO (0) OVERSIZED PADS. FABRICATION VENDOR IS ALLOWED TO ADJUST THE COMPONENT SOLDERMASK PADS TO MEET THEIR TOOLING REQUIREMENTS.
- APPLY LPI SILKSCREEN OR EQUIVALENT PER THE ARTWORK. COLOR: ORANGE.

LAYER STACK-UP ALL DIMENSIONS IN MILS		50ohm SINGLE ENDED IMPEDANCE CONTROL +/- 10%	90ohm DIFFERENTIAL IMPEDANCE CONTROL +/- 10%	100ohm DIFFERENTIAL IMPEDANCE CONTROL +/- 10%
LAYER#	COPPER WEIGHT (OZ)	TRACE WIDTH	TRACE WIDTH / SPACE	TRACE WIDTH / SPACE
LAYER 1 - PRIMARY SIDE - SIGNAL	HALF-PLATING	4.72	5.00/9.00	4.00/10.00
LAYER 2 - GROUND PLANE	1			
LAYER 3 - INT. SIGNAL	1	3.70	4.50/10.00	3.70/12.00
LAYER 4 - GROUND PLANE	1			
LAYER 5 - INT. SIGNAL	1	3.70		3.70/12.00
LAYER 6 - POWER PLANE	1			
LAYER 7 - POWER PLANE	1			
LAYER 8 - INT. SIGNAL	1	3.70		
LAYER 9 - GROUND PLANE	1			
LAYER 10- INT. SIGNAL	1	3.70	4.50/10.00	3.70/12.00
LAYER 11- GROUND PLANE	1			
LAYER 12- SECONDARY SIDE - SIGNAL	HALF-PLATING	4.72	5.00/9.00	4.00/10.00



SCORE LINE
SEE DETAIL "A"

DRILL CHART: TOP to BOTTOM ALL UNITS ARE IN MILS				
FIGURE	SIZE	TOLERANCE	PLATED	QTY
•	6.0	+3.0/-3.0	PLATED	7
•	8.0	+3.0/-3.0	PLATED	2601
•	8.0	+3.0/-3.0	PLATED	83
•	12.0	+3.0/-3.0	PLATED	41
•	20.0	+3.0/-3.0	PLATED	2
•	26.0	+3.0/-3.0	PLATED	2
•	31.0	+3.0/-3.0	PLATED	7
•	35.0	+0.0/-0.0	PLATED	26
•	36.0	+3.0/-3.0	PLATED	31
•	38.0	+3.0/-3.0	PLATED	31
•	40.0	+0.0/-0.0	PLATED	8
•	40.0	+3.0/-3.0	PLATED	5
•	52.0	+3.0/-3.0	PLATED	14
•	62.0	+0.0/-0.0	PLATED	4
•	75.0	+3.0/-3.0	PLATED	1
•	91.0	+3.0/-3.0	PLATED	2
•	102.0	+3.0/-3.0	PLATED	1
•	125.0	+3.0/-3.0	PLATED	4
•	45.0	+3.0/-3.0	NON-PLATED	8
•	63.0	+2.0/-2.0	NON-PLATED	1
•	67.0	+5.0/-5.0	NON-PLATED	2
•	125.0	+5.0/-5.0	NON-PLATED	3
•	128.0	+0.0/-0.0	NON-PLATED	2
•	41.34x25.59	+4.0/-4.0	PLATED	2
•	47.24x25.59	+4.0/-4.0	PLATED	2
•	47.24x39.37	+3.0/-3.0	PLATED	4
•	59.0x31.0	+3.0/-3.0	PLATED	12
•	59.0x31.0	+3.0/-3.0	PLATED	2
•	63.0x25.0	+3.0/-3.0	PLATED	4
•	70.87x39.37	+3.0/-3.0	PLATED	12
•	79.0x32.0	+3.0/-3.0	PLATED	4
•	87.0x32.0	+3.0/-3.0	PLATED	1
•	93.0x50.0	+3.0/-3.0	PLATED	4

