

ETSI EN 300 328 RX Blocking Test for Bluetooth® Low Energy

Reidar Myhr

ABSTRACT

This application report describes the setup and procedure used to measure the new ETSI EN receiver (RX) blocking test added to version v2.1.1 of the ETSI EN 300 328 harmonized standard.

Project collateral discussed in this application report can be downloaded from the following URL:
<http://www.ti.com/lit/zip/swra536>.

Contents

1	Introduction	2
2	ETSI EN 300 328 V2.1.1 Requirement	2
3	Test Setup	2
4	Measurement Data	9
5	References	12

List of Figures

1	I/Q Traces vs Time, FFT Spectrum and Density Plot for Waveform.....	3
2	Test Setup Connection.....	4
3	Setting the Frequency and Level	5
4	Baseband and ARB	5
5	Waveform Modulation	6
6	Load Waveform	6
7	Turn On Moduation	7
8	Trigger/Marker.....	7
9	Mode “Single” and 1500 Signal Duration	8
10	Execute Trigger	8
11	RX Setup.....	9
12	RX Blocking Measurement Results	11
13	Detailed Plot	12

List of Tables

1	Receiver Blocking Parameters Receiver Category 2 Equipment.....	2
2	TX CW Blocker Loss.....	10
3	BLE PEP vs PER at 2402 MHz	10
4	BLE PEP vs PER at 2480 MHz	10
5	Brief Table.....	11

Trademarks

SmartRF is a trademark of Texas Instruments.
 Bluetooth is a registered trademark of Bluetooth SIG, Inc.
 Wi-Fi is a registered trademark of Wi-Fi Alliance.
 ZigBee is a registered trademark of ZigBee Alliance.

All other trademarks are the property of their respective owners.

1 Introduction

ETSI EN 300 328 is a European harmonized standard that specifies the regulatory requirement for data transmission equipment operating in the 2.4 GHz ISM band and using wide band modulation techniques in Europe. This standard covers technology such as Wi-Fi®, Bluetooth and ZigBee® but also other proprietary transmission systems that use the 2.4 GHz ISM band.

In the current version of V2.1.1, which was released in November, 2016 under the European Radio Equipment Directive 2014/53/EU (RED), a new requirement regarding receiver blocking performance was added and this application report shows how it can be measured for a Bluetooth low energy system using a Rohde & Schwartz vector signal generator. The same method can be applied for most other transmission systems or signal generator vendors.

2 ETSI EN 300 328 V2.1.1 Requirement

The ETSI specification divides receivers into three different categories: category 1 to category 3. The categorization can be found in the *Categorization* section in the [ETSI specification \(V2.1.1, 2016, p.15\)](#). Bluetooth low energy devices fall in either category 2 or category 3 based on Medium Utilization (MU), a product of TX duty cycle and output power. Category 2 covers devices with output power between 0 and 10 dBm assuming 100% duty cycle, and has stricter requirements than category 3. As the CC2640 easily fulfills the requirements for category 2, we will only focus on these requirements throughout this document.

The blocking requirements for receiver category 2 is found in the *Receiver Category 2* section in the [ETSI specification \(V2.1.1, 2016, p. 38\)](#).

Table 1. Receiver Blocking Parameters Receiver Category 2 Equipment

Wanted Signal Mean Power From Companion Device (dBm)	Blocking Signal Frequency (MHz)	Blocking Signal Power (dBm) (see ⁽¹⁾)	Type of Blocking Signal
$P_{min} + 6$ dB (see ⁽²⁾)	2380 2503.5	-57	CW
$P_{min} + 6$ dB (see ⁽²⁾)	2300 2583.5	-47	CW

⁽¹⁾ The levels specified are levels in front of the UUT antenna. In case of conducted measurements, the levels have to be corrected by the actual antenna assembly gain.

⁽²⁾ P_{min} is the minimum level of the wanted signal (in dBm) required to meet the minimum performance criteria as defined in the clause in the *Performance Criteria* section of [ETSI EN 300 328 V2.1.1](#) in the absence of any blocking signal.

Tests should be performed at both lowest and highest operating frequency according to the *Test Conditions* section in the [ETSI specification \(V2.1.1, 2016, p. 72\)](#).

3 Test Setup

This example shows how to setup the measurement of a Bluetooth low energy blocking test. The test is performed at the lowest and highest channels (2402 MHz and 2480 MHz) according to the ETSI EN 300 328 (V2.1.1, 2016). The Bluetooth low energy specification specifies a PER limit at 30.8% (1038 OK packages out of 1500 packages).

Setup is for conducted measurements.

3.1 Test Equipment

- DUT. For this document a CC2650EM-7ID with SmartRF06EB was used.
- SMBV100A (or other newer R&S signal generators)
- CW generator (R&S SMU or similar)
- Spectrum analyzer (R&S FSQ or similar)

3.2 R&S Waveform

The waveform, R&S_IQ_BLE_1Mbps_1pkt_70ms_guard.ww, is a binary file containing I/Q samples that can be used through a baseband generator with ARB to create a 1 Mbps BLE modulated test data package. This waveform is compatible with all new Rohde and Schwarz signal generators like SMW200A, SMU200A, SMJ100A, SMATE200A, AMU200A, SMBV100A, AFQ100B, SMA100A, SMB100A or SMC100A.

The waveform contains a 37 byte large 1 Mbps BLE modulated package with an access address of 0x71764129.

There is a 1 ms guard time added at the beginning of the waveform and a 69 ms guard time at the end of the waveform. This leads to a 70 ms time between each package when the waveform is looped repeatedly back to back. The reason for adding the guard bands is so that each packet can be received reliably without any packages getting lost due to the limited bandwidth between the DUT and the PC running SmartRF™ Studio.

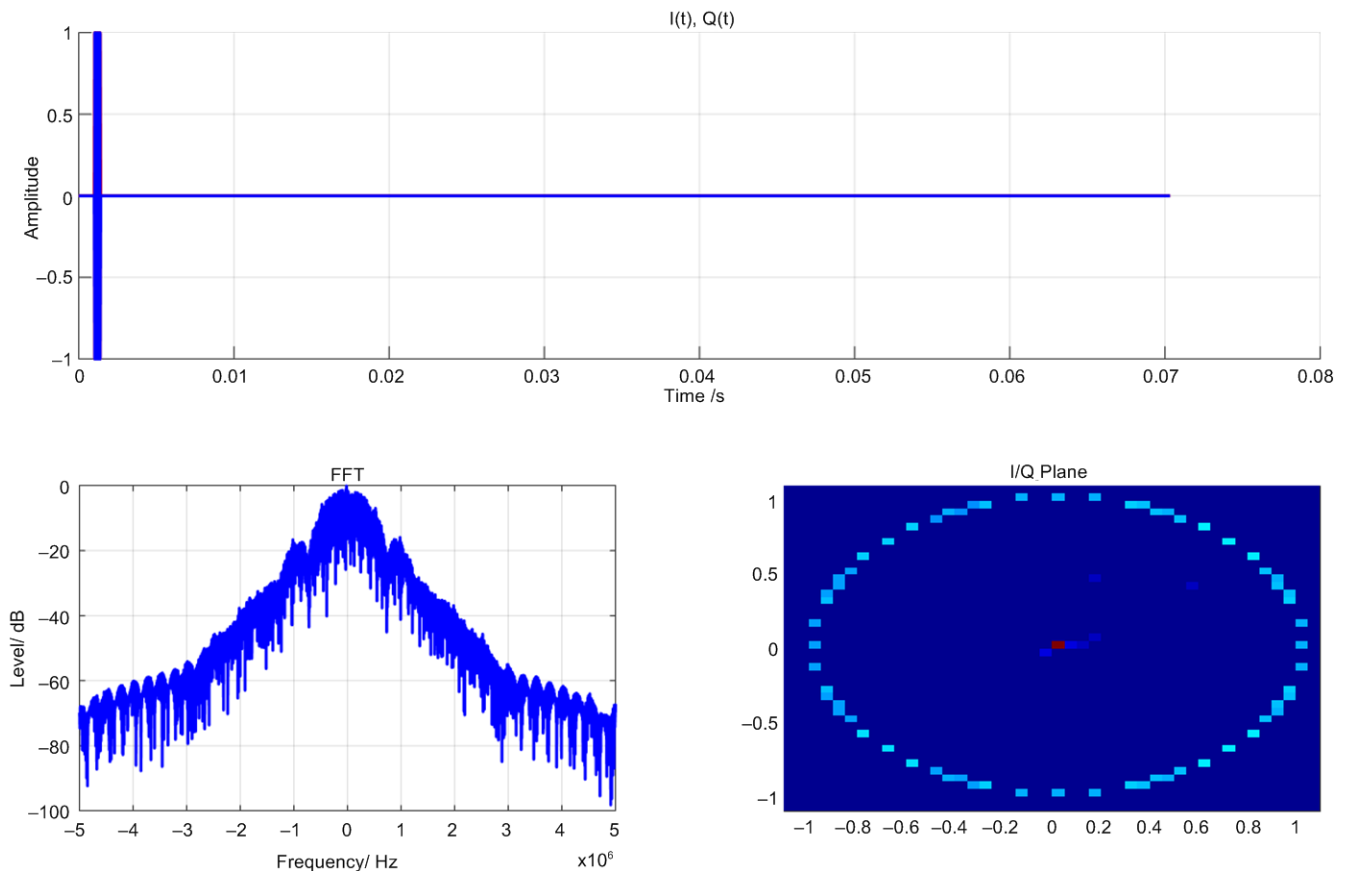
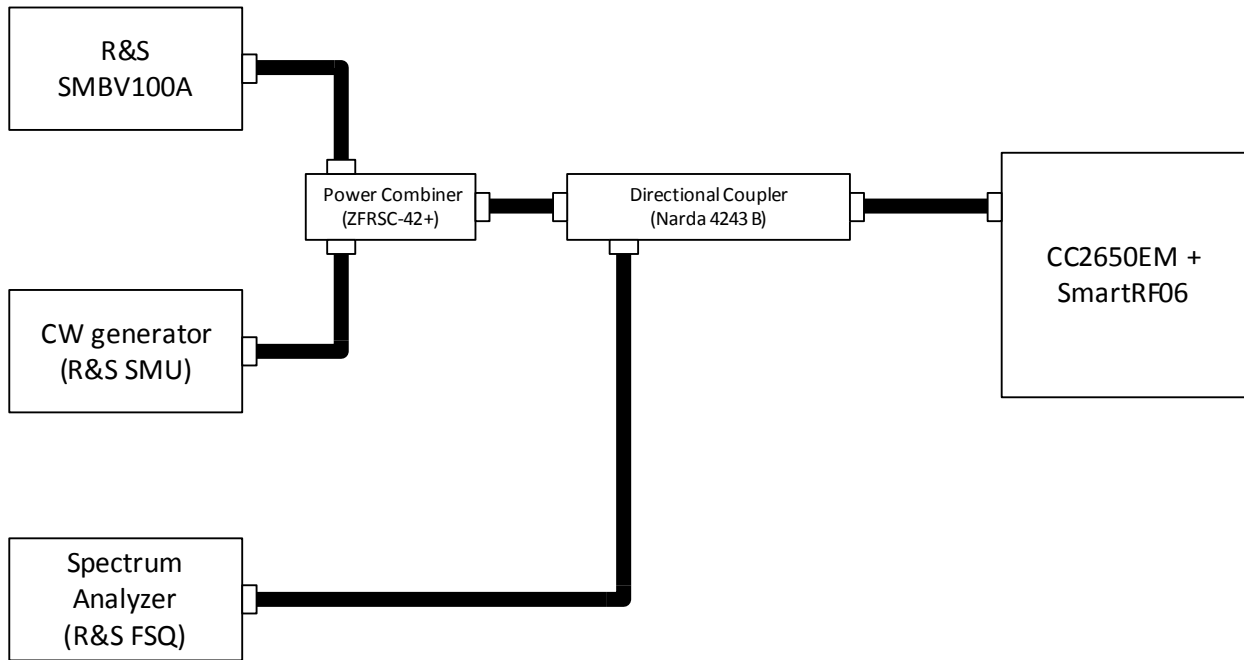


Figure 1. I/Q Traces vs Time, FFT Spectrum and Density Plot for Waveform

3.3 Connection

Figure 2 shows the connection for the test setup. The directional coupler and spectrum analyzer is optional but is good to have when the loss in the test system are going to be measured.



Copyright © 2017, Texas Instruments Incorporated

Figure 2. Test Setup Connection

3.4 TX Setup

This is the setup for a R&S SMBV100A signal generator.

1. Upload IQ waveform, R&S_IQ_BLE_1Mbps_1pkt_70ms_guard.wv, to SMBV100A using [R&S_ARB_toolbox](#) or a USB flash drive.
2. Set the wanted frequency and level on the modulated signal.

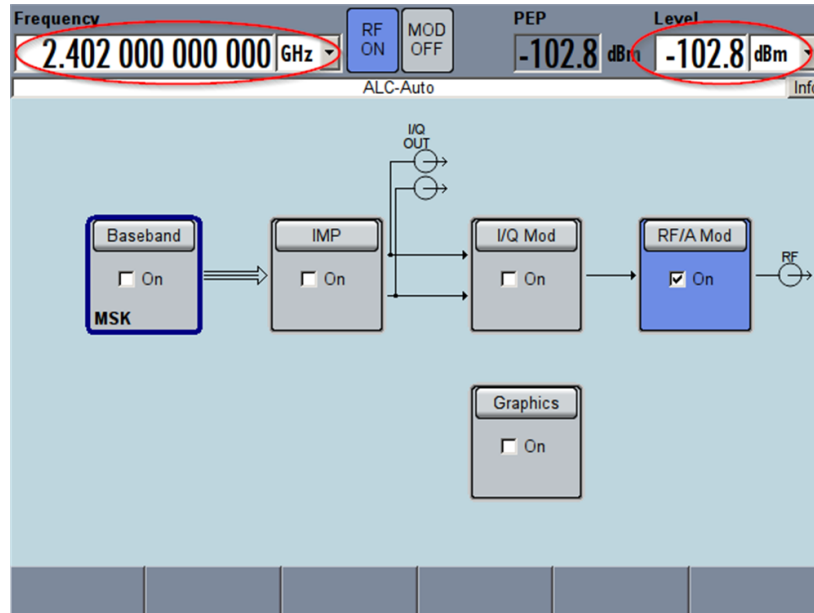


Figure 3. Setting the Frequency and Level

3. Select "BaseBand" and "ARB" on the signal generator

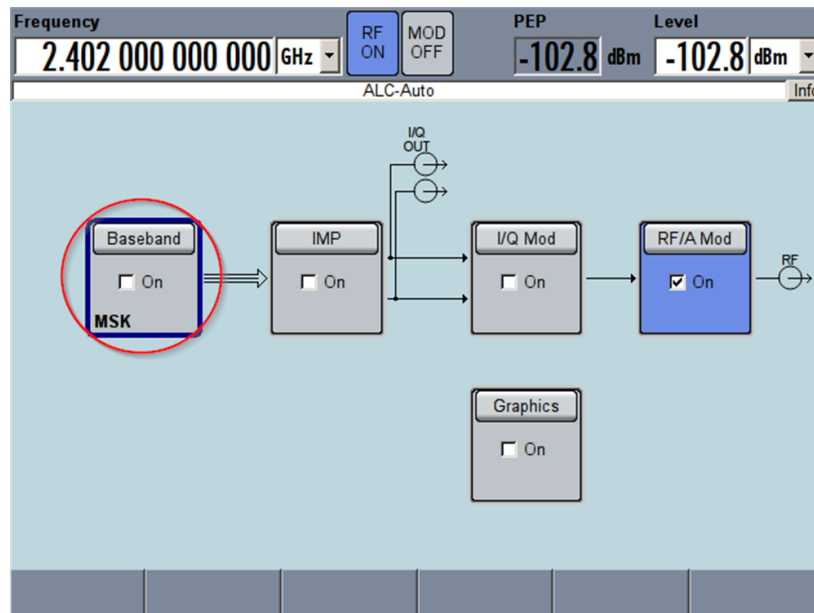


Figure 4. Baseband and ARB

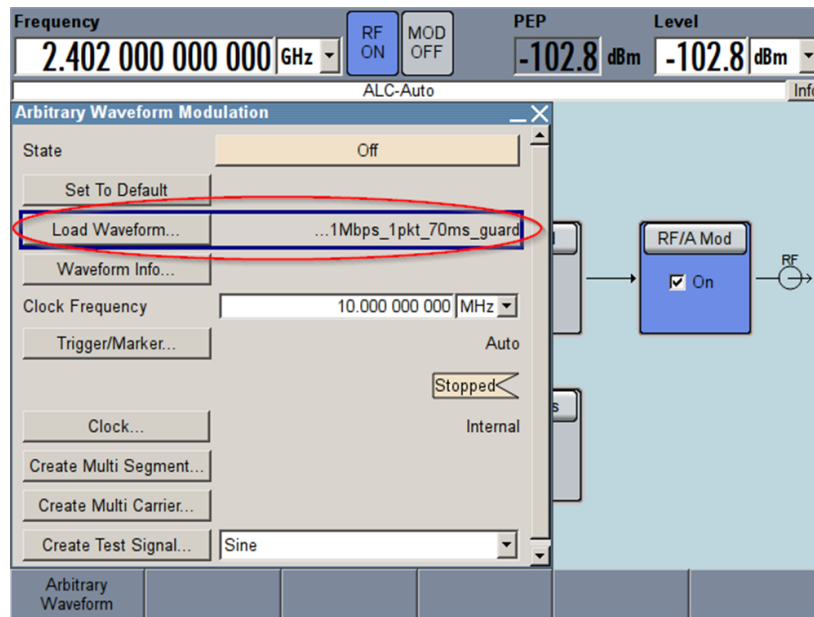


Figure 5. Waveform Modulation

4. Select “Load Waveform” and load R&S_IQ_BLE_1Mbps_1pkt_70ms_guard.vw.

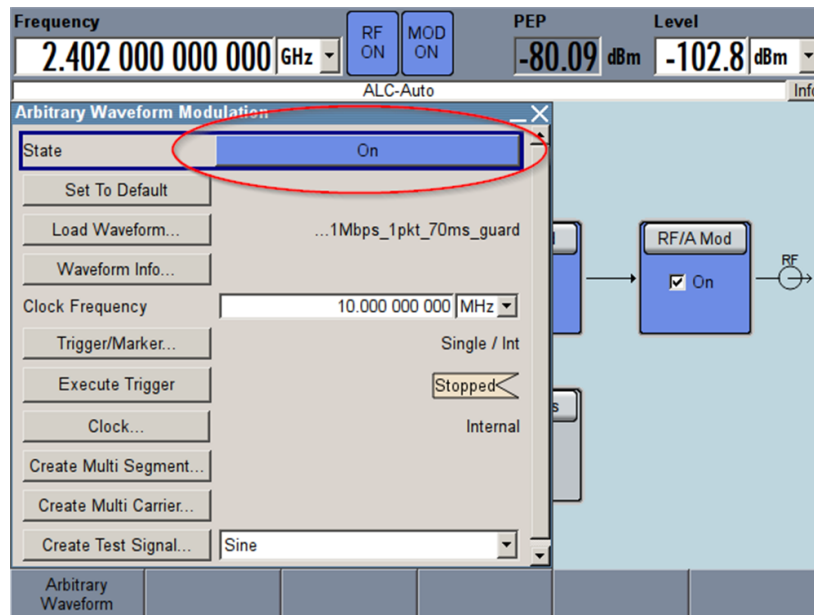


Figure 6. Load Waveform

5. Turn on modulation.

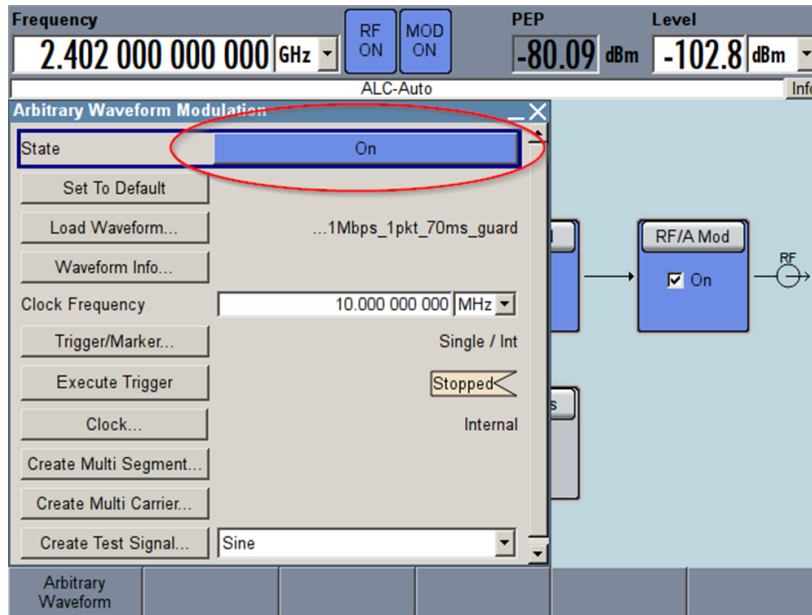


Figure 7. Turn On Moduation

6. Select "Trigger/Marker".

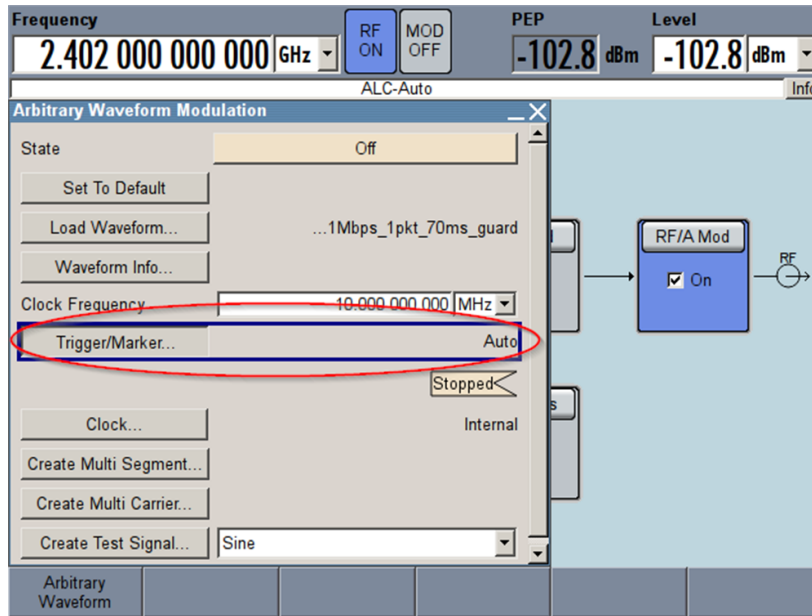


Figure 8. Trigger/Marker

7. Select Mode “Single” and 1500 Signal Duration (number of packages to send per trigger).

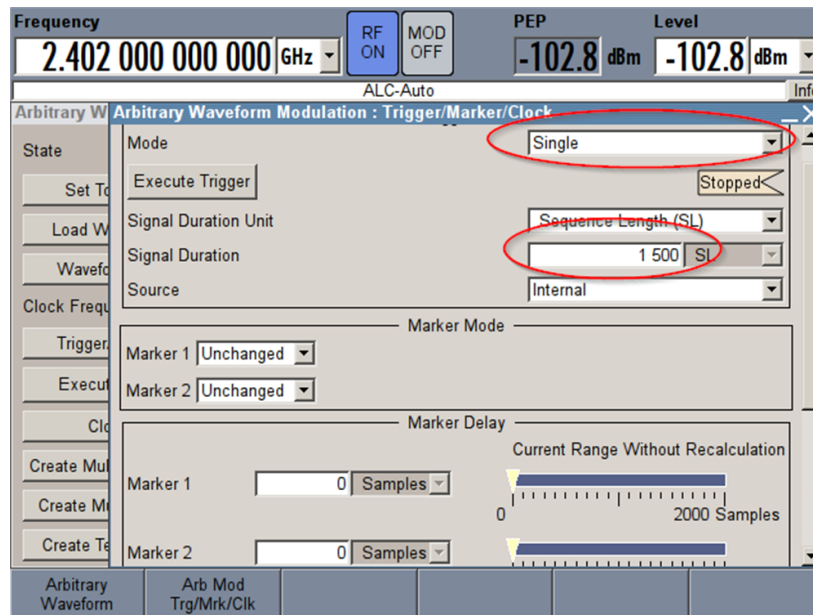


Figure 9. Mode “Single” and 1500 Signal Duration

8. Press “Execute Trigger” to start a transmission of 1500 packages

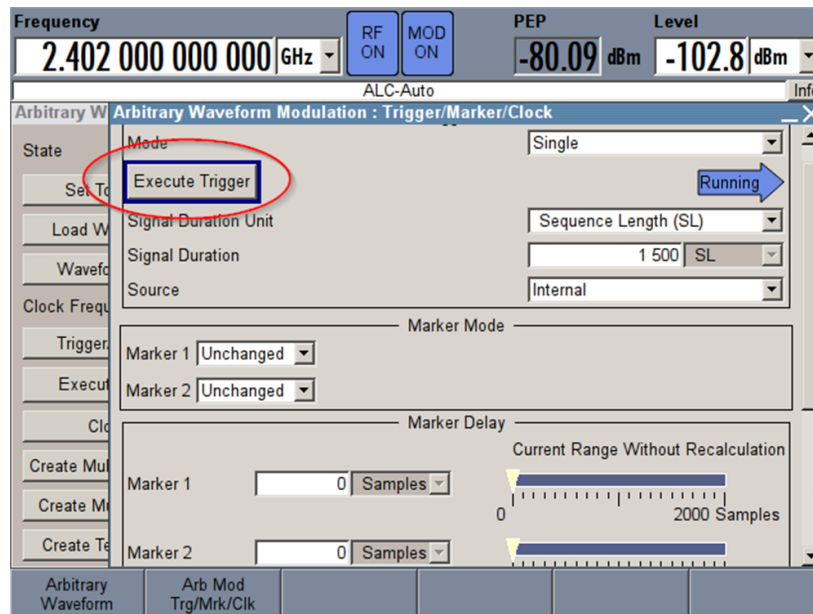


Figure 10. Execute Trigger

3.5 RX Setup

SmartRF Studio is used to setup the DUT to receive Bluetooth low energy packages.

1. Download and install SmartRF Studio from www.ti.com (<http://www.ti.com/tool/SMARTRFSTM-STUDIO>)
2. Start SmartRF Studio and select CC2650 BLE mode
3. Device Control Panel configuration:
 1. Set Expected Packet Count (1500)
 2. Select Frequency
 1. 2402 MHz (BLE Channel 37)
 2. 2480 MHz (BLE Channel 39)
 3. Uncheck “Whitening”
 4. Uncheck “Seq. Number included in Payload”
 5. Set Access Addr to 0x71764129

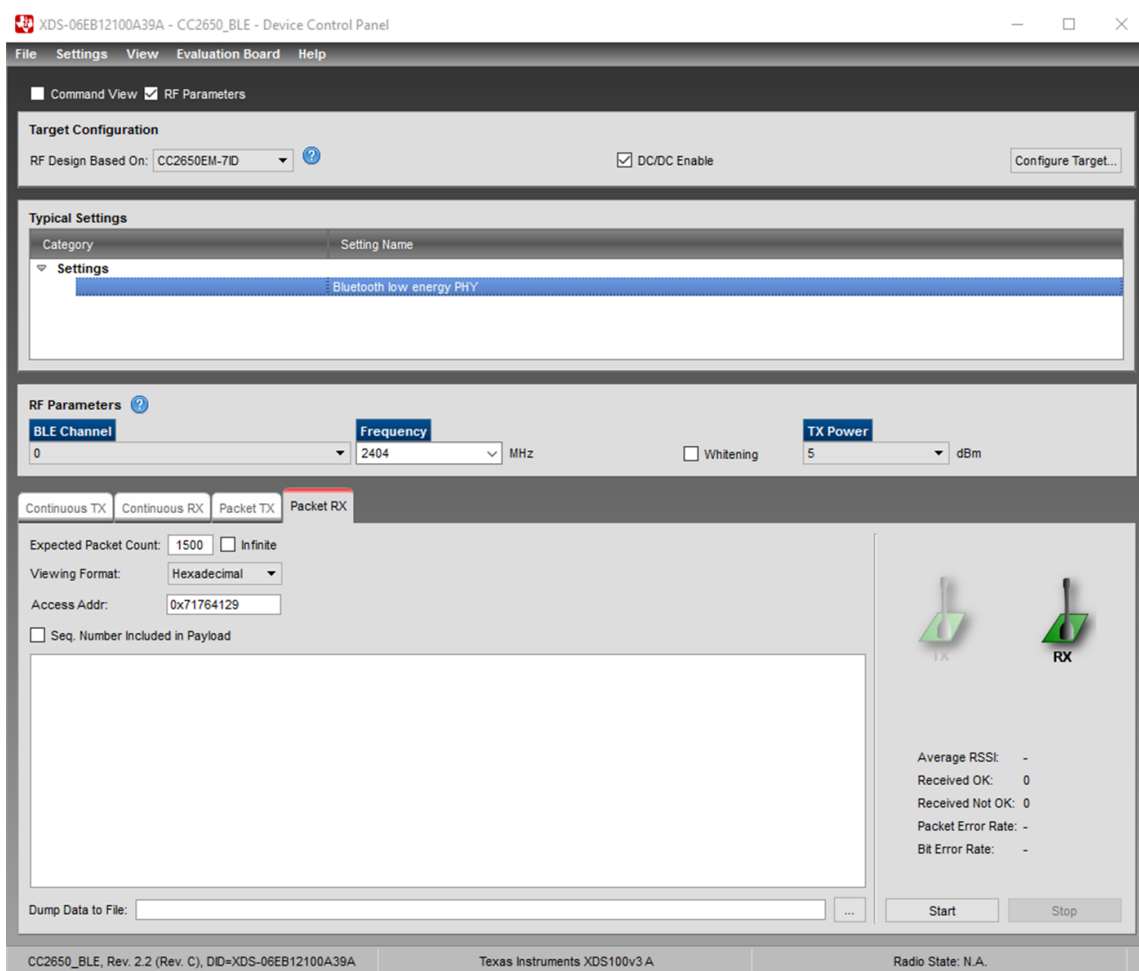


Figure 11. RX Setup

4. Press “Start” to configure and start receiving packages.

4 Measurement Data

The measurement of the receiver blocking performance is divided into three steps. The first step (see [Section 4.1](#)) is to measure the loss in the test setup, the second step (see [Section 4.2](#) and [Section 4.3](#)) is to measure the sensitivity for the Device Under Test (DUT) and, finally, the third step (see [Section 4.4](#)) is where the actual receiver blocking performance is measured.

4.1 TX CW Blocker Setup

Loss for the TX CW blocker through cables, splitter and coupler from the signal generator in the test setup needs to be measured and compensated to get the correct measurement results.

The cable connected to the DUT is connected to the spectrum analyzer and the power level of the TX CW is measured at the different TX CW test frequencies. The difference between the TX CW source output power and the power applied to the DUT is calculated and used to compensate the measurement result presented in [Section 4.4](#).

Table 2. TX CW Blocker Loss

	2380.0 MHz	2503.5 MHz	2300.0 MHz	2583.5 MHz
Blocker output [dBm]	-30.0	-30.0	-30.0	-30.0
@ Coupler [dBm]	-47.8	-47.2	-47.5	-48.1
@ DUT [dBm]	-39.9	-39.8	-39.8	-40.5
Loss in test setup [dB]	-9.9	-9.8	-9.8	-10.5

4.2 Low Channel Sensitivity (2402 MHz)

Table 3. BLE PEP vs PER at 2402 MHz

Level	PEP	Ok pkt	PER[%]
-105.0	-82.29	150	0.00 %
-106.0	-83.29	148	1.33 %
-107.0	-84.29	145	3.33 %
-108.0	-85.29	127	15.33 %
-108.5	-85.79	110	26.67 %
-109.0	-86.29	97	35.33 %
-110.0	-87.29	38	74.67 %

Measured sensitivity at 2402 MHz was found to be -86.05 dBm Peak Envelope Power (PEP). Wanted signal should, according to the *Receiver Blocking Parameters Receiver Category 2 Equipment* table in [ETSI EN 300 328 V2.1.1](#), be set 6 dB above the sensitivity limits. With a measured sensitivity at -86.05 dBm that will lead to that the level on the wanted signal should be -80.09 dBm PEP (level = -102.8 dBm).

Note that there is a loss in the test setup at almost 10dB (see [Section 4.1](#)) so actual RX sensitivity level is around 96dBm.

4.3 High Channel Sensitivity (2480 MHz)

Table 4. BLE PEP vs PER at 2480 MHz

Level	PEP	Ok Pkt	PER[%]
-105.0	-82.29	148	1.33 %
-106.0	-83.29	141	6.00 %
-107.0	-84.29	132	12.00 %
-108.0	-85.29	117	22.00 %
-108.6	-85.89	104	30.67 %
-109.0	-86.29	94	37.33 %
-110.0	-87.29	45	70.00 %

Measured sensitivity at 2480 MHz was found to be -85.89 dBm PEP. The wanted signal should, according to the *Receiver Blocking Parameters Receiver Category 2 Equipment* table in [ETSI EN 300 328 V2.1.1](#), be set 6 dB above the sensitivity limits. With a measured sensitivity of -85.89 dBm this leads to that the level on the wanted signal being -79.89 dBm PEP (level = -102.2 dBm).

Note that there is a loss in the test setup of almost 10 dB (see [Section 4.1](#)) so actual sensitivity level is around -96 dBm.

4.4 BLE PER vs Blocking Requirement (ETSI EN 300 328 V2.1.1)

Test steps:

1. Wanted signal level is set 6 dB above the sensitivity level for the selected operating frequency (2402 MHz and 2480 MHz) according to the result from [Section 4.2](#) and [Section 4.3](#).
2. Apply a TX CW interferer at 2300.0 MHz to the DUT with increasing power level until PER goes above the specified 30.8% level for BLE.
3. Repeat step 2 for 2380.0 MHz, 2503.5 MHz and 2583.5 MHz

As can be seen in [Table 5](#), [Figure 12](#) and [Figure 13](#), the CC2650 are well inside the requirements specified in ETSI EN 300 328 V2.1.1 when using Bluetooth low energy.



Figure 12. RX Blocking Measurement Results

Table 5. Brief Table

Interferer Frequency [MHz]	Limit [dBm]	Wanted at 2402 MHz [dBm]	Wanted at 2480 MHz [dBm]
2300.00	-47	-21.35	-20.70
2380.00	-57	-26.10	-22.20
2503.50	-57	-21.60	-36.90
2583.50	-47	-20.20	-21.60

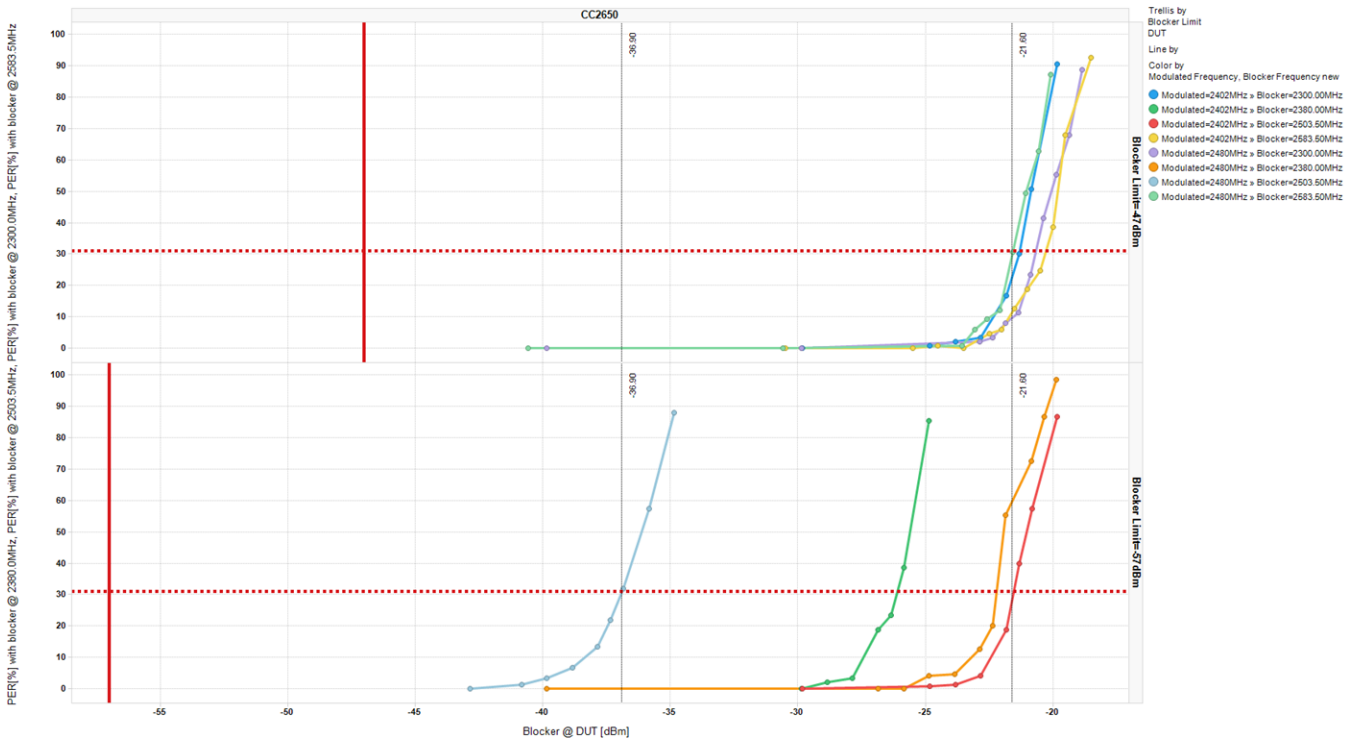


Figure 13. Detailed Plot

5 References

- TI. (2016, December 09). TI.com. Retrieved January 3, 2017, from SmartRF Studio: <http://www.ti.com/tool/SMARTRFSTM-STUDIO>
- V2.1.1, E. E. (2016, November 15). ETSI EN 300 328 V2.1.1. Retrieved January 3, 2017, from ETSI.org: http://www.etsi.org/deliver/etsi_en/300300_300399/300328/02.01.01_60/en_300328v020101p.pdf

IMPORTANT NOTICE FOR TI DESIGN INFORMATION AND RESOURCES

Texas Instruments Incorporated ("TI") technical, application or other design advice, services or information, including, but not limited to, reference designs and materials relating to evaluation modules, (collectively, "TI Resources") are intended to assist designers who are developing applications that incorporate TI products; by downloading, accessing or using any particular TI Resource in any way, you (individually or, if you are acting on behalf of a company, your company) agree to use it solely for this purpose and subject to the terms of this Notice.

TI's provision of TI Resources does not expand or otherwise alter TI's applicable published warranties or warranty disclaimers for TI products, and no additional obligations or liabilities arise from TI providing such TI Resources. TI reserves the right to make corrections, enhancements, improvements and other changes to its TI Resources.

You understand and agree that you remain responsible for using your independent analysis, evaluation and judgment in designing your applications and that you have full and exclusive responsibility to assure the safety of your applications and compliance of your applications (and of all TI products used in or for your applications) with all applicable regulations, laws and other applicable requirements. You represent that, with respect to your applications, you have all the necessary expertise to create and implement safeguards that (1) anticipate dangerous consequences of failures, (2) monitor failures and their consequences, and (3) lessen the likelihood of failures that might cause harm and take appropriate actions. You agree that prior to using or distributing any applications that include TI products, you will thoroughly test such applications and the functionality of such TI products as used in such applications. TI has not conducted any testing other than that specifically described in the published documentation for a particular TI Resource.

You are authorized to use, copy and modify any individual TI Resource only in connection with the development of applications that include the TI product(s) identified in such TI Resource. NO OTHER LICENSE, EXPRESS OR IMPLIED, BY ESTOPPEL OR OTHERWISE TO ANY OTHER TI INTELLECTUAL PROPERTY RIGHT, AND NO LICENSE TO ANY TECHNOLOGY OR INTELLECTUAL PROPERTY RIGHT OF TI OR ANY THIRD PARTY IS GRANTED HEREIN, including but not limited to any patent right, copyright, mask work right, or other intellectual property right relating to any combination, machine, or process in which TI products or services are used. Information regarding or referencing third-party products or services does not constitute a license to use such products or services, or a warranty or endorsement thereof. Use of TI Resources may require a license from a third party under the patents or other intellectual property of the third party, or a license from TI under the patents or other intellectual property of TI.

TI RESOURCES ARE PROVIDED "AS IS" AND WITH ALL FAULTS. TI DISCLAIMS ALL OTHER WARRANTIES OR REPRESENTATIONS, EXPRESS OR IMPLIED, REGARDING TI RESOURCES OR USE THEREOF, INCLUDING BUT NOT LIMITED TO ACCURACY OR COMPLETENESS, TITLE, ANY EPIDEMIC FAILURE WARRANTY AND ANY IMPLIED WARRANTIES OF MERCHANTABILITY, FITNESS FOR A PARTICULAR PURPOSE, AND NON-INFRINGEMENT OF ANY THIRD PARTY INTELLECTUAL PROPERTY RIGHTS.

TI SHALL NOT BE LIABLE FOR AND SHALL NOT DEFEND OR INDEMNIFY YOU AGAINST ANY CLAIM, INCLUDING BUT NOT LIMITED TO ANY INFRINGEMENT CLAIM THAT RELATES TO OR IS BASED ON ANY COMBINATION OF PRODUCTS EVEN IF DESCRIBED IN TI RESOURCES OR OTHERWISE. IN NO EVENT SHALL TI BE LIABLE FOR ANY ACTUAL, DIRECT, SPECIAL, COLLATERAL, INDIRECT, PUNITIVE, INCIDENTAL, CONSEQUENTIAL OR EXEMPLARY DAMAGES IN CONNECTION WITH OR ARISING OUT OF TI RESOURCES OR USE THEREOF, AND REGARDLESS OF WHETHER TI HAS BEEN ADVISED OF THE POSSIBILITY OF SUCH DAMAGES.

You agree to fully indemnify TI and its representatives against any damages, costs, losses, and/or liabilities arising out of your non-compliance with the terms and provisions of this Notice.

This Notice applies to TI Resources. Additional terms apply to the use and purchase of certain types of materials, TI products and services. These include; without limitation, TI's standard terms for semiconductor products (<http://www.ti.com/sc/docs/stdterms.htm>), [evaluation modules](#), and [samples](http://www.ti.com/sc/docs/sampterm.htm) (<http://www.ti.com/sc/docs/sampterm.htm>).

Mailing Address: Texas Instruments, Post Office Box 655303, Dallas, Texas 75265
Copyright © 2018, Texas Instruments Incorporated