

# **Advanced Gas Gauge Host Firmware Flow Chart for the TI Battery Monitor ICs**

Doug Williams

Power Management Products

## **ABSTRACT**

TI advanced battery-monitoring ICs, such as the bq2018, bq2019, and bq2023, are designed to accurately measure the charge and discharge currents in rechargeable battery packs. Intended for pack integration, these devices contain all the necessary functions to form the basis of a comprehensive battery capacity management system in applications such as cellular phones, PDAs, Internet appliances, or other portable products. TI battery monitors work with the host controller in the portable system to implement the battery gas gauging and management system. The host controller is responsible for interpreting the battery monitor data and communicating meaningful battery data to the end-user or power management system.

This document, written around the bq2019, is designed to assist the firmware engineer engaged in development of advanced gas gauging routines in the host controller. A flow chart is presented for implementing the gas gauging function in the host firmware. Suggested constant and variable values are outlined and described.

This document is designed to be used in conjunction with the related application note *Advanced Gas Gauge Host Firmware Guide for the TI Battery Monitor ICs (SLVA100)*

## **Gas Gauging Functions**

Apart from the required general read and write functions, gas gauge firmware may be broken down into six tasks as in table 1. The flowchart is organized according to these functions.

**Table 1. Gas Gauge Firmware Tasks**

Name	Recommended Interval	Description
GGInitialize( )	On power up	Qualify the battery and communication. Read and convert constants and scratch pad variables from bq2019 into the host.
GGUpdate( )	Once per minute (typical)	Calculate capacity, average current, run time and charge time. Manage full, empty and learning. Update display.
GGRegisterMaint( )	Hourly	Do register maintenance. Store remaining capacity in the bq2019. Clear registers.
GGSelfDischarge( )	Several times per day	Make corrections to remaining capacity for self-discharge.
GGMeasBattVltg( )	Every 20 seconds	Measure the battery voltage. Call GGUpdate( ) if battery crosses the empty voltage threshold.
GGPwrDwnSave( )	On power down	Provide an orderly shutdown. Update bq2019 registers.

## Gas Gauging Constants

Table 2 below outlines a set of suggested constants for gas gauge implementation. Notice that the last three are only used as a mechanism to simplify calculations in the firmware. The flowchart refers specifically to many of these constants.

**Table 2. Typical Gas Gauge Constants**

Class	Name	Suggested bq2019 Address [1]	Used In	Type/Units	Description/Comment
Mfg Data	ID_ROM	78~7F	GGInitialize( )	8 bytes	Factory programmed ROM
	sMFG_DATA	20~25	GGInitialize( )	(str) ASCII	Manufacturers data
	sMODEL	26~2B	GGInitialize( )	(str) ASCII	Battery model
	sMFG_NAME	2C~35	GGInitialize( )	(str) ASCII	Manufacturer name
	iSERIAL_NO	36/37	GGInitialize( )	(uint)	Serial number
	iMFG_DATE	38/39	GGInitialize( )	(uint) Date	Manufactured date
Design Data	iDES_CAP	3A/3B	GGInitialize( ) GGUpdate( )	(uint) Milliampere Hours	Pack design capacity
	iSNS_RES	3C/3D	GGInitialize( )	(uint) mΩ * 327.68	Sense resistor mΩ x 2 <sup>15</sup> / 100
	iSLF_DSG_RATE	3E/3F	GGInitialize( ) GGSelfDischarge	(uint) %/Day * 105.8	Self discharge rate
	iEND_DSG_VLTG	40/41	GGInitialize( ) GGUpdate( ) GGMeasBattVltg( )	(uint) Millivolts	End of discharge voltage
	iTERM_CURR	42/43	GGInitialize( ) GGUpdate( )	(uint) Milliamperes	Charge taper termination current
	iCAP_COMP_TE	44	GGInitialize( ) GGUpdate( )	(byte) % of full capacity	Capacity compensation for temperature
	iCAP_COMP_LD	45	GGInitialize( ) GGUpdate( )	(byte) % of full capacity	Capacity compensation for load current
	iTALK_LD	n/a	GGInitialize( )	(uint) mA	Estimated talk load
	iSTBY_LD	n/a	GGInitialize( )	(uint) mA	Estimated standby load
	iTALK_LD_CNTS	n/a	GGInitialize( ) GGUpdate( )	Counts @ 3.05 μVh	= iSNS_RES * iTALK_LD / 1000
	iSTBY_LD_CNTS	n/a	GGInitialize( ) GGUpdate( )	Counts @ 3.05 μVh	= iSNS_RES * iSTBY_LD / 1000
	iCYCL_CAP	n/a	GGInitialize( ) GGUpdate( )	(uint) = iDES_CAP * iSNS_RES* 0.8/1000	May be used to simplify math in GGUpdate( )

[1] Addresses are in hex. n/a indicates that the values are maintained by the host since they are not a function of the battery. ID\_ROM is a fixed address in the bq2019.

## Gas Gauging Variables

Table 3, below outlines suggested variables and memory addresses for gas gauge implementation. The flowchart refers specifically to most of these values.

**Table 3. Typical Gas Gauge Variables**

Class	Name	Suggested bq2019 Address [2][3]	Used In	Type/Units	Description/Comment
Computed Values	iLastMeasDsg	00/01	GGInitialize( ) GGUpdate( ) GGSelfDischarge( )	(uint) Counts @ 3.05 $\mu$ Vh	Last measured discharge. (Initial value set during mfg.)
	iRemCap	02/03	GGInitialize( ) GGUpdate( )	(uint) Counts @ 3.05 $\mu$ Vh	Remaining capacity (Initial value set during mfg.)
	iCycleCnt	04/05	GGUpdate( )	(uint) Units	Cycle count (Typically increased if iDsgCntnCuml has reached 80% of design capacity)
	iMaxTemp	06	GGInitialize( ) GGUpdate( ) GGPwrDwnSave( )	(byte) °K	Max temp seen by this bq2019. Update it in the host during GG_Update.
	iValidDsg	07	GGInitialize( ) GGPwrDwnSave( )	(uint) Flag	Valid discharge flag. This is a flag, but 0x55 is used to indicate true to avoid possible corruption on power down/up cycles.
	iDsgCntr	08/09	GGInitialize( ) GGUpdate( ) GGSelfDischarge( ) GGPwrDwnSave( )	(uint) Counts @ 3.05 $\mu$ Vh	Discharge counter for learning a new iLastMeasDsg
	iDsgCntnCuml	0A/0B	GGInitialize( ) GGUpdate( ) GGSelfDischarge( ) GGPwrDwnSave( )	(uint) Counts @ 3.05 $\mu$ Vh	Cumulative discharge counter tracks partial discharges for iCycleCnt update.
	iLastRemCap	0C/0D	GGInitialize( ) GGPwrDwnSave( )	(uint) Counts @ 3.05 $\mu$ Vh	Last computed remaining capacity value
	iCumlCorrectn	0E/0F	GGInitialize( ) GGUpdate( ) GGSelfDischarge( ) GGPwrDwnSave( )	(uint) Counts @ 3.05 $\mu$ Vh	Tracks cumulative self-discharge corrections. Disqualifies learning cycle if it exceeds 10% of iDES_CAP.
	iTimeSinceMaint	n/a	GGInitialize( ) GGUpdate( ) GGRegisterMaint( )	(uint) Minutes	Minutes elapsed since last register maintenance.
	iRunTime	n/a	GGUpdate( )	(uint) Minutes	Estimated remaining run time at present current.

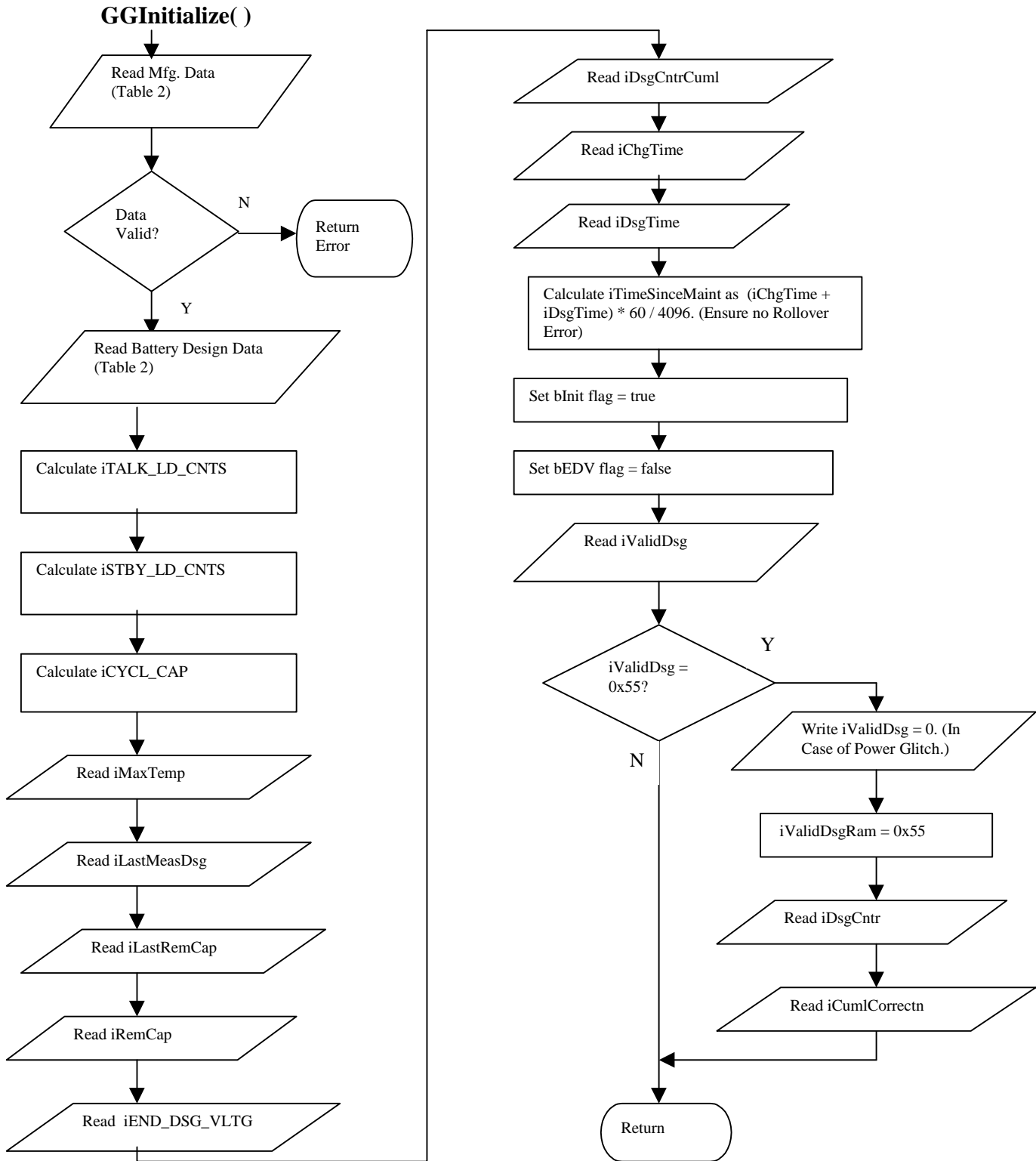
**Table 3. Typical Gas Gauge Variables (Continued)**

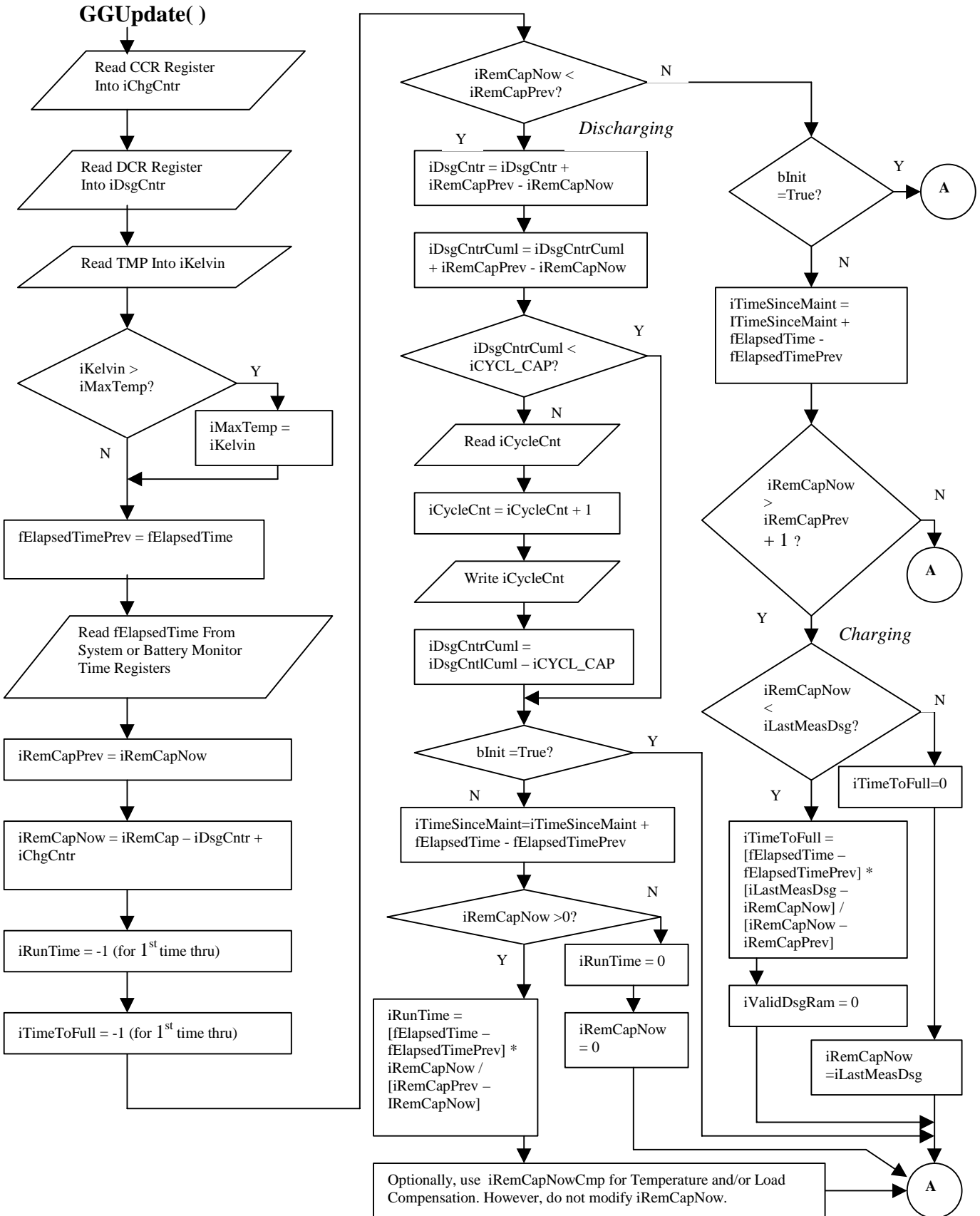
Class	Name	Suggested bq2019 Address [2][3]	Used In	Type/Units	Description/Comment
Computed Values	iTimeToFull	n/a	GGUpdate( )	(uint) Minutes	Estimated remaining time to charge to full.
	iTalkTime	n/a	GGUpdate( )	(uint) Minutes	Estimated remaining run time at iTALK_LD
	iStbyTime	n/a	GGUpdate( )	(uint) Minutes	Estimated remaining run time at iSTBY_LD
	iRelChgPercent	n/a	GGUpdate( )	(uint) %	Relative charge in percent of full charge. aka 'RSOC'
	bInit	n/a	GGInitialize( ) GGUpdate( )	(bool) Flag	Initial pass flag. Inhibits iRunTime and iTimeToFull calculations the first time through GGUpdate( )
	bEDV	n/a	GGInitialize( ) GGUpdate( )	(bool) Flag	Flag to notify other host process that battery is at end of discharge voltage.
	bChgFull	n/a	GGUpdate( )	(bool) Flag	Flag used by the charger or other host process to indicate that the battery is fully charged.
	iValidDsgRam	n/a	GGInitialize( ) GGUpdate( ) GGPwrDwnSave( )	(uint) Flag	Host version of iValidDsg. This is a flag, but 0x55 is used to indicate true to avoid possible corruption on power down/up cycles.
	iRemCapNow	n/a	GGInitialize( ) GGUpdate( ) GGRegisterMaint( ) GGSelfDischarge( ) GGPwrDwnSave( )	(int) Counts @ 3.05 $\mu$ Vh	Most recent calculation of remaining capacity.
	iRemCapNowCmp	n/a	GGUpdate( )	(int) Counts @ 3.05 $\mu$ Vh	If load and/or temperature compensation are used for remaining capacity, this separate variable is required for the most recent calculation of compensated remaining capacity.
	iRemCapPrev	n/a	GGUpdate( )	(int) Counts @ 3.05 $\mu$ Vh	Calculation of remaining capacity from the previous update.
	iRemCapTemp	n/a	GGSelfDischarge( )	(uint) Counts @ 3.05 $\mu$ Vh	Temp variable for iterative self-discharge estimate.
	iSlfDsgEst	n/a	GGSelfDischarge( )	(uint)	Temp self-discharge variable.
	iTempCorrection	n/a	GGSelfDischarge( )	(uint)	Temp self-discharge variable.
fElapsedTime	n/a	GGUpdate( )	(float) Minutes	Value in minutes, with resolution to seconds since power on reset detected.	

**Table 3. Typical Gas Gauge Variables (Continued)**

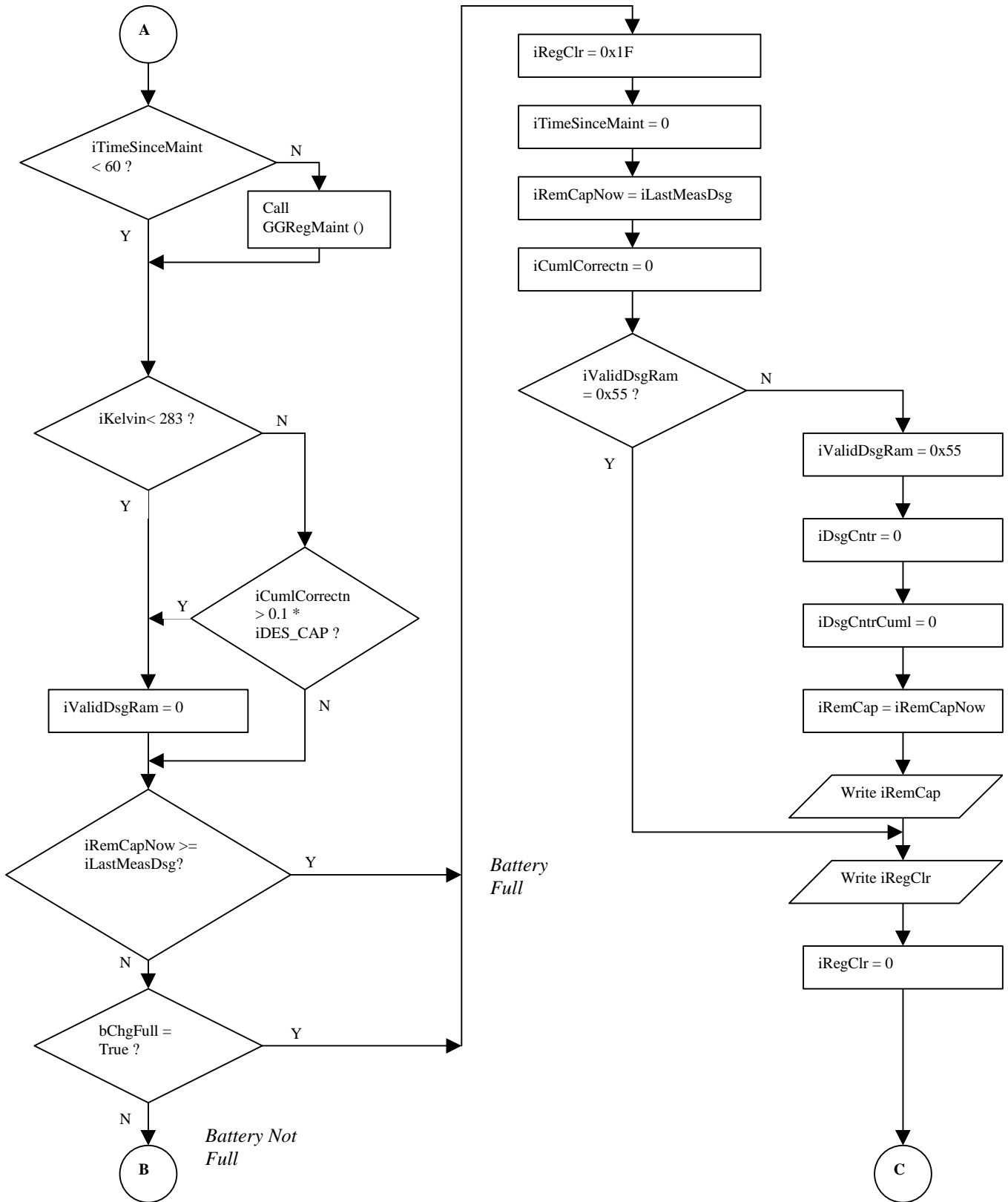
Class	Name	Suggested bq2019 Address [2][3]	Used In	Type/Units	Description/Comment
Computed Values	fElapsedTimePrev	n/a	GGUpdate( )	(float) Minutes	Value in minutes, with resolution to seconds since the power on reset detected previous to fElapsedTime.
bq2019 Gas Gauge Registers and corresponding host vars.	iKelvin (Host) TMPL (bq2019) TMPH (bq2019)	n/a 60 61	GGInitialize( ) GGUpdate	(uint) °K	TMPH, TMPL in the bq2019 contain die temperature in °K.
	iRegClr (Host) CLR (bq2019)	63	GGUpdate( ) GGRegisterMaint( ) GGSelfDischarge( )	(uint) Bits	CLR is used to quickly clear DCR, CCR, SCR, DTC, CTC in any combination. iRegClr is used by the host to set up the next desired clearing pattern.
	iChgTime (Host) CTCL (bq2019) CTCH (bq2019)	65 66	GGInitialize( ) GGUpdate( ) ??	(uint) 4096 counts per hour	Charge Time Counter. May be used in GGUpdate( ) if no timer or time function is available in the host.
	iDsgTime (Host) DTCL (bq2019) DTCH (bq2019)	67 68	GGInitialize( ) GGUpdate( ) ??	(uint) 4096 counts per hour	Discharge Time Counter. May be used in GGUpdate( ) if no timer or time function is available in the host
	iSlfDsgCntr (Host) SCRL (bq2019) SCRH (bq2019)	69 6A	GGInitialize( ) GGSelfDischarge( )	(uint) 1 count per hour (20 – 30°C)	Self Discharge Counter. Rate varies automatically with temperature.
	iChgCntr (Host) CCRL (bq2019) CCRH (bq2019)	6B 6C	GGUpdate( )	(uint) Counts @ 3.05 µVh	Charge count register in bq2019 increments when voltage at the SR pin is positive.
	iDsgCntr (Host) DCRL (bq2019) DCRH (bq2019)	6D 6E	GGUpdate( )	(uint) Counts @ 3.05 µVh	Discharge count register in bq2019 increments when voltage at the SR pin is negative.

[2] Addresses are in hex. [3]Gas gauge registers are at fixed locations.



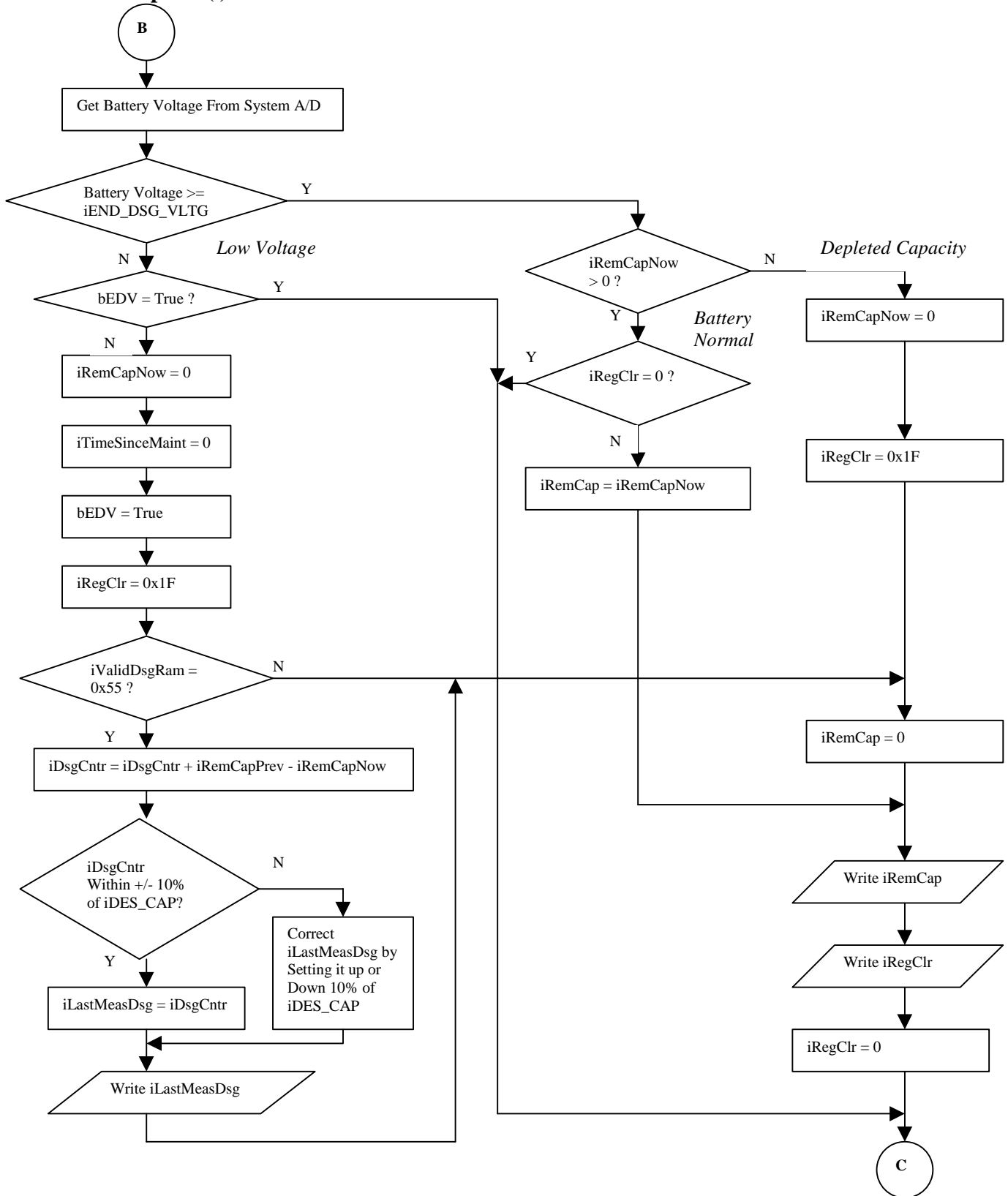


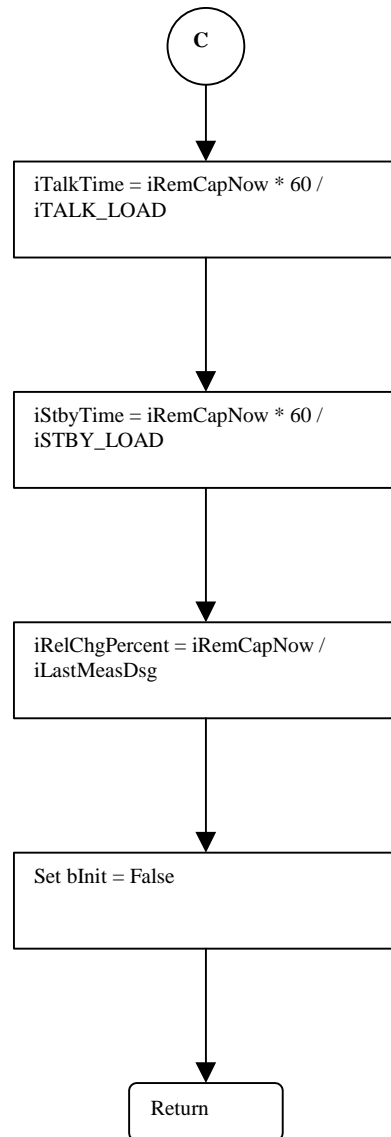
**GGUpdate() Continued**

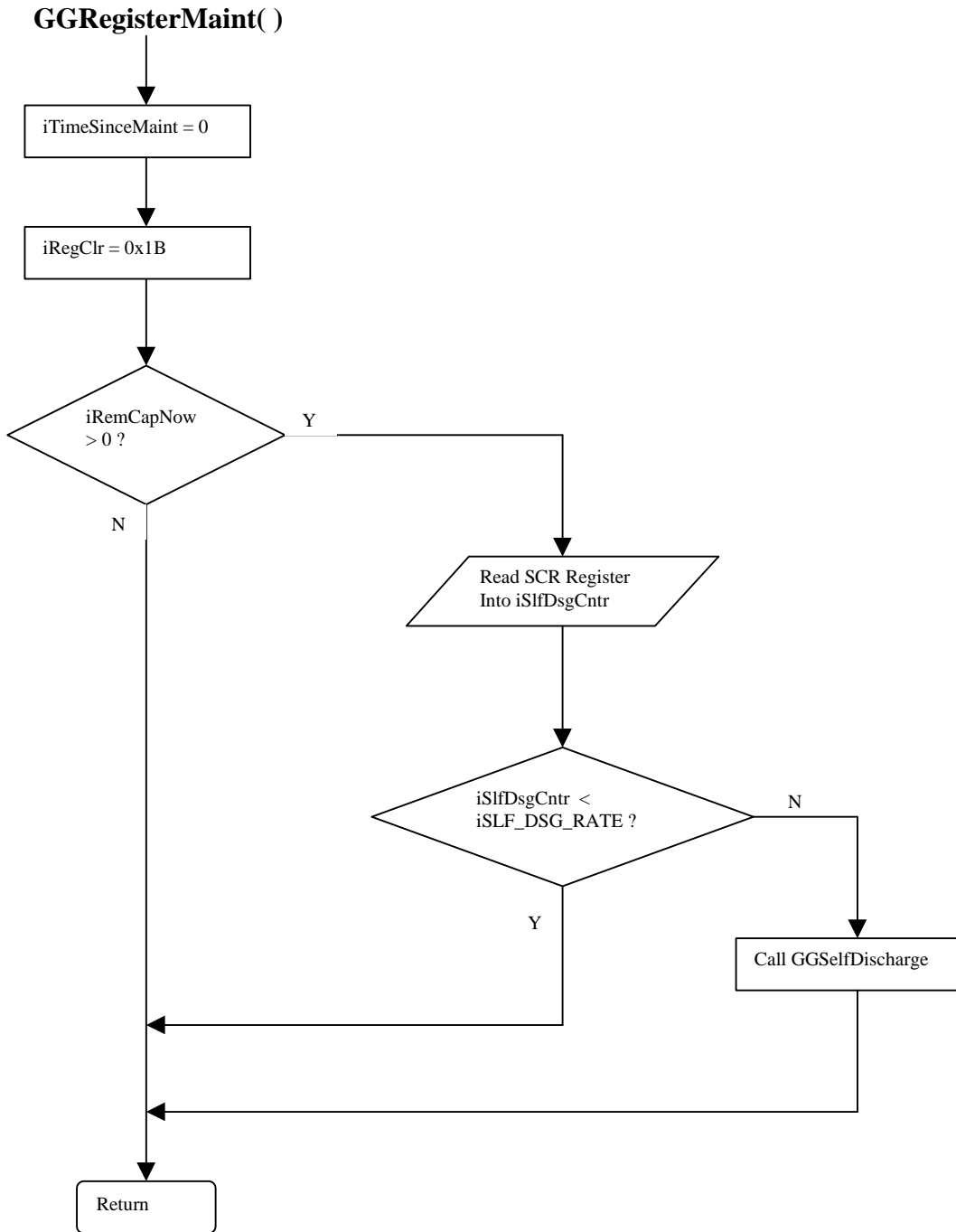


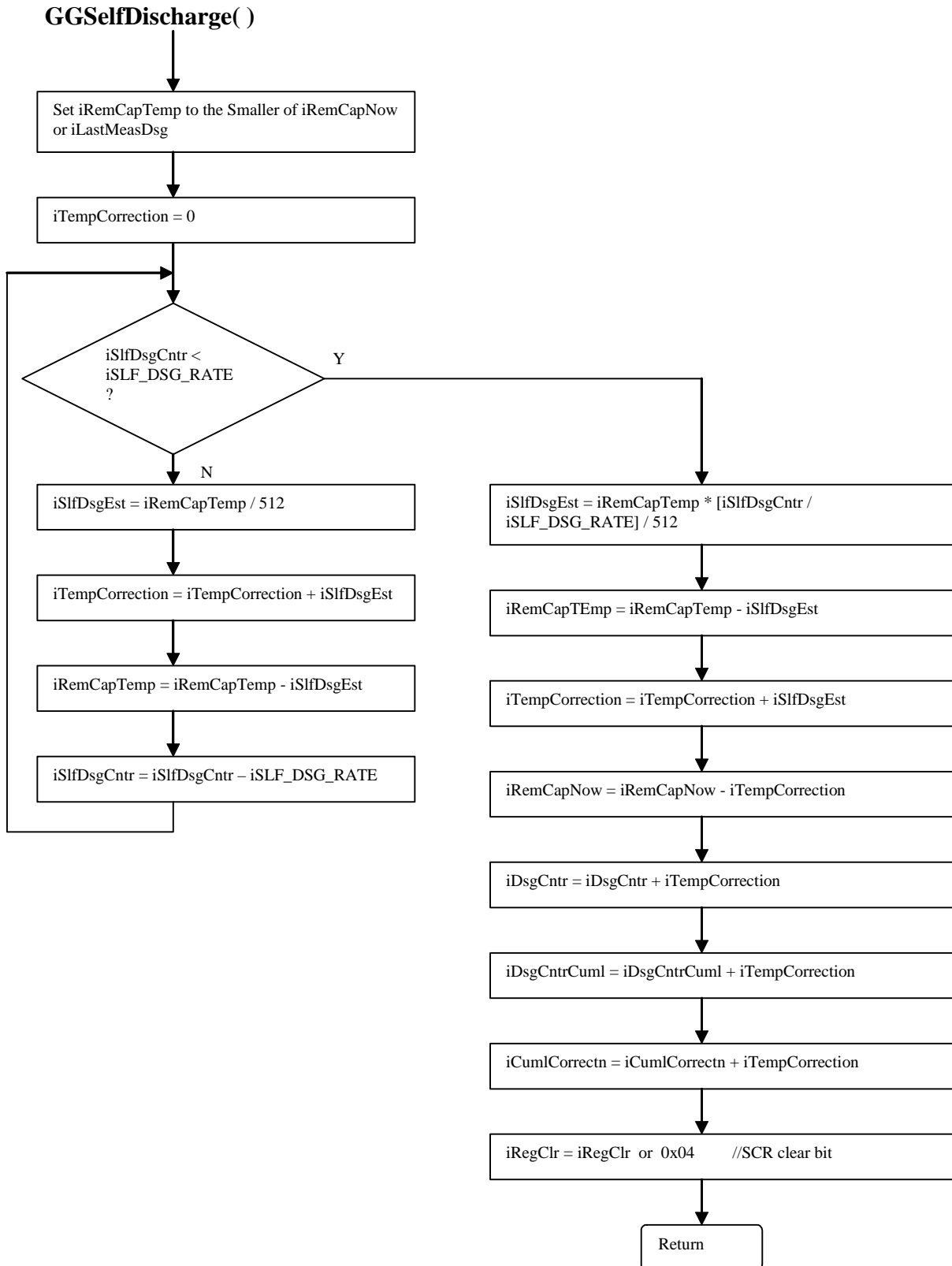


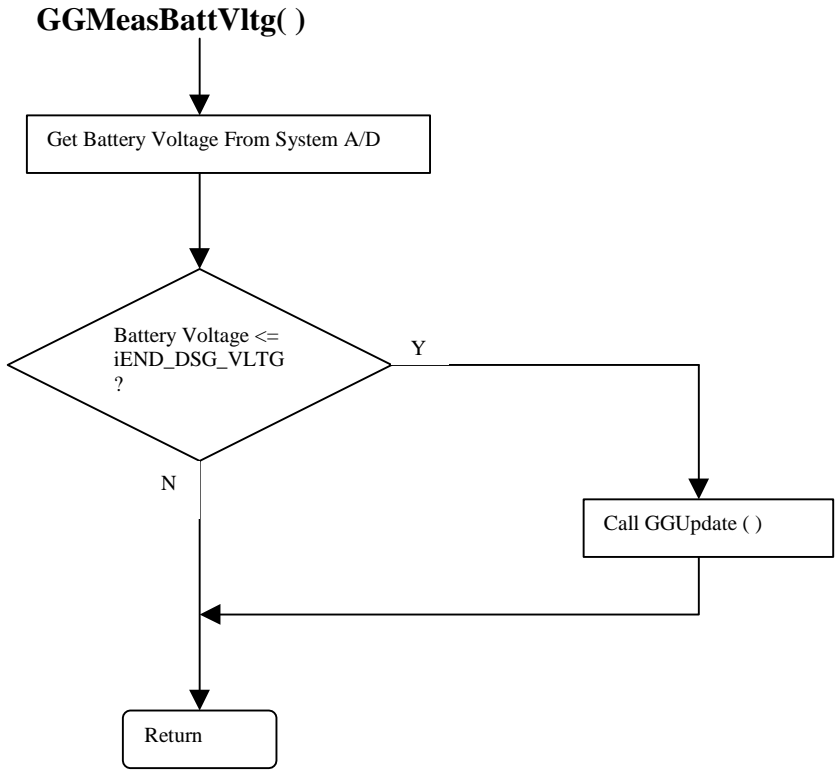
GGUpdate() Continued

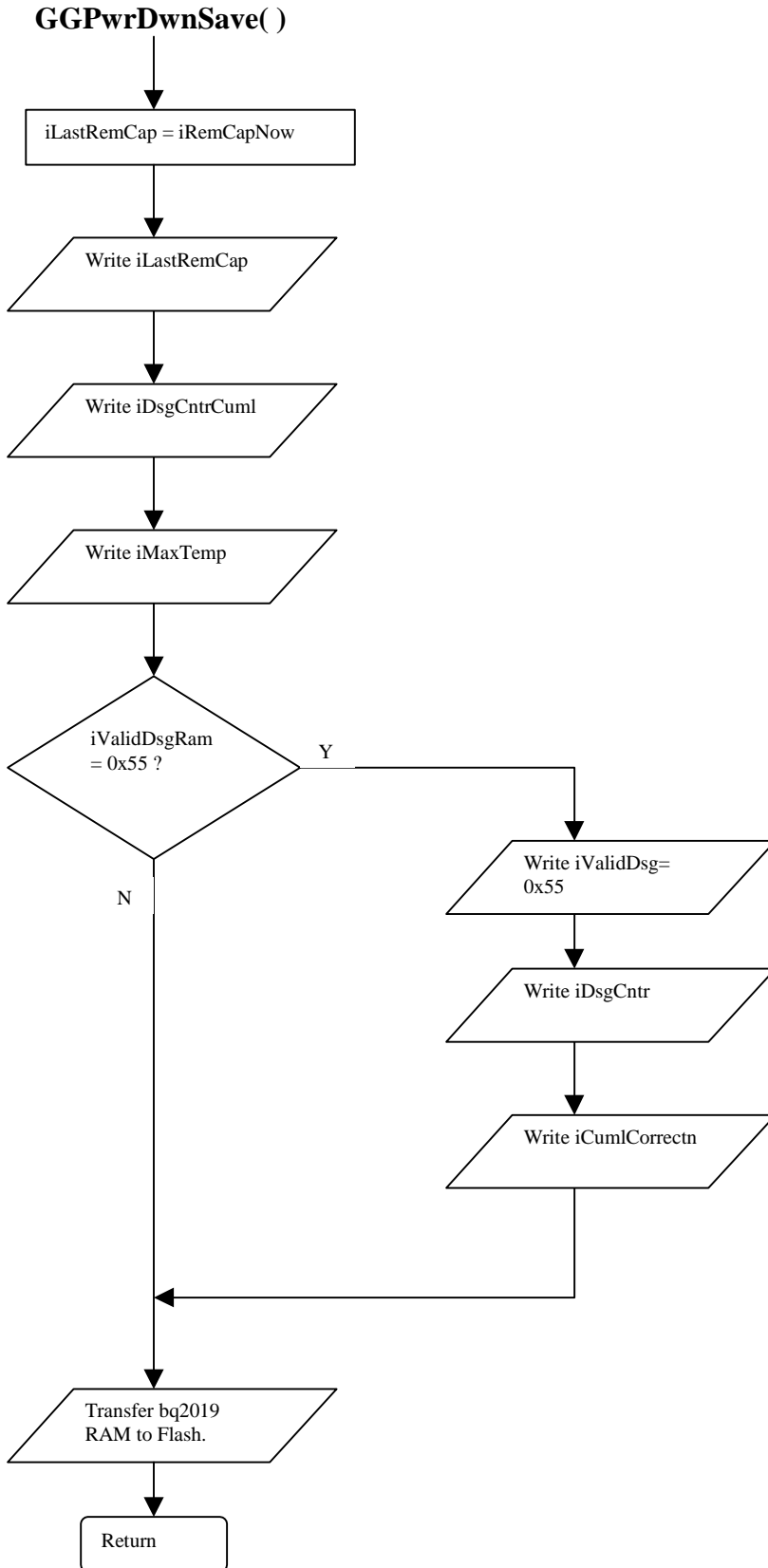


**GGUpdate() Continued**









## References

1. *Texas Instruments. data sheet for bq2019 Advanced Battery Monitor IC (SLUS456)*
2. *Texas Instruments. Advanced Gas Gauge Host Firmware Guide for the TI Battery Monitor ICs (SLVA100)*

## IMPORTANT NOTICE

Texas Instruments Incorporated and its subsidiaries (TI) reserve the right to make corrections, modifications, enhancements, improvements, and other changes to its products and services at any time and to discontinue any product or service without notice. Customers should obtain the latest relevant information before placing orders and should verify that such information is current and complete. All products are sold subject to TI's terms and conditions of sale supplied at the time of order acknowledgment.

TI warrants performance of its hardware products to the specifications applicable at the time of sale in accordance with TI's standard warranty. Testing and other quality control techniques are used to the extent TI deems necessary to support this warranty. Except where mandated by government requirements, testing of all parameters of each product is not necessarily performed.

TI assumes no liability for applications assistance or customer product design. Customers are responsible for their products and applications using TI components. To minimize the risks associated with customer products and applications, customers should provide adequate design and operating safeguards.

TI does not warrant or represent that any license, either express or implied, is granted under any TI patent right, copyright, mask work right, or other TI intellectual property right relating to any combination, machine, or process in which TI products or services are used. Information published by TI regarding third-party products or services does not constitute a license from TI to use such products or services or a warranty or endorsement thereof. Use of such information may require a license from a third party under the patents or other intellectual property of the third party, or a license from TI under the patents or other intellectual property of TI.

Reproduction of information in TI data books or data sheets is permissible only if reproduction is without alteration and is accompanied by all associated warranties, conditions, limitations, and notices. Reproduction of this information with alteration is an unfair and deceptive business practice. TI is not responsible or liable for such altered documentation.

Resale of TI products or services with statements different from or beyond the parameters stated by TI for that product or service voids all express and any implied warranties for the associated TI product or service and is an unfair and deceptive business practice. TI is not responsible or liable for any such statements.

### Mailing Address:

Texas Instruments  
Post Office Box 655303  
Dallas, Texas 75265