

Application Note

TPS22995H-Q1 Humidity Performance



Kalin Burnside, Dhanyasree Prem Sankar

ABSTRACT

Many automotive applications exist in humid environments where conformal coating is necessary to prevent potential shorts between pins of ICs on the electrical control unit. These conformal coatings are expensive, increase manufacturing time, and make trouble shooting afterward very difficult. With more humidity resistant devices this conformal coating material does not have to be as extensive which can reduce prices and manufacturing time. The worst case resistive short due to humidity is expected to be 100 k Ω and the device needs to be tested adjacent pins-to-pins and each pin-to-ground showing the device still functions.

Table of Contents

1 Test setup	2
1.1 Schematic.....	2
1.2 Layout.....	3
1.3 Test Conditions.....	4
2 Results	5
2.1 Functional Test Results.....	5
2.2 Base Measurements.....	6
2.3 Test 1: 100 k Ω Short From RT to GND 5 V.....	7
2.4 Test 2: 100 k Ω Short From RT to GND 1.8 V.....	7
2.5 Test 3: 100k Ω short from RT to V_{IN} 5V.....	8
2.6 Test 4: 100 k Ω Short From RT to V_{IN} 1.8 V.....	8
2.7 Test 5: 100 k Ω Short From RT to V_{OUT} 5 V.....	9
2.8 Test 6: 100 k Ω Short From RT to V_{OUT} 1.8 V.....	9
3 Summary	10
4 References	11
6 Appendix A	12

List of Figures

Figure 1-1. TPS22995H-Q1 Humidity Board Schematic.....	2
Figure 1-2. Top Layout.....	3
Figure 1-3. Bottom Layout.....	3
Figure 2-1. Base 5 V t_{RISE} and t_{ON} Measurement.....	6
Figure 2-2. Base 1.8 V t_{RISE} and t_{ON} Measurement.....	6
Figure 2-3. 100 k Ω Short From RT to GND 5 V t_{RISE} and t_{ON} Oscilloscope Shot.....	7
Figure 2-4. 100 k Ω Short From RT to GND 1.8 V t_{RISE} and t_{ON} Oscilloscope Shot.....	7
Figure 2-5. 100 k Ω Short From RT to V_{IN} 5V t_{RISE} and t_{ON} Oscilloscope Shot.....	8
Figure 2-6. 100 k Ω Short From RT to V_{IN} 1.8 V t_{RISE} and t_{ON} Oscilloscope Shot.....	8
Figure 2-7. 100 k Ω Short From RT to V_{OUT} 5 V t_{RISE} and t_{ON} Oscilloscope Shot.....	9
Figure 2-8. 100 k Ω Short From RT to V_{OUT} 1.8 V t_{RISE} and t_{ON} Oscilloscope Shot.....	9
Figure 6-1. V_{IN} 100 k Ω Short to V_{BIAS}	12
Figure 6-2. V_{BIAS} 100 k Ω to GND.....	12
Figure 6-3. V_{IN} 100 k Ω Short to ON.....	13
Figure 6-4. V_{IN} 100 k Ω Short to V_{OUT}	13
Figure 6-5. V_{OUT} 100 k Ω Short to GND.....	14

List of Tables

Table 2-1. Functional Test Results.....	5
---	---

Trademarks

All trademarks are the property of their respective owners.

1 Test setup

While it would be quick to set up a humidity chamber and test our device in the humidity chamber, the results might not be easily reproducible. We determined that developing a board with configurable 100 kΩ (expected worst-case condition) shorts between each adjacent pin to pin, and pin to GND can be reproducible and show that TPS22995H-Q1 can still function within expectations.

1.1 Schematic

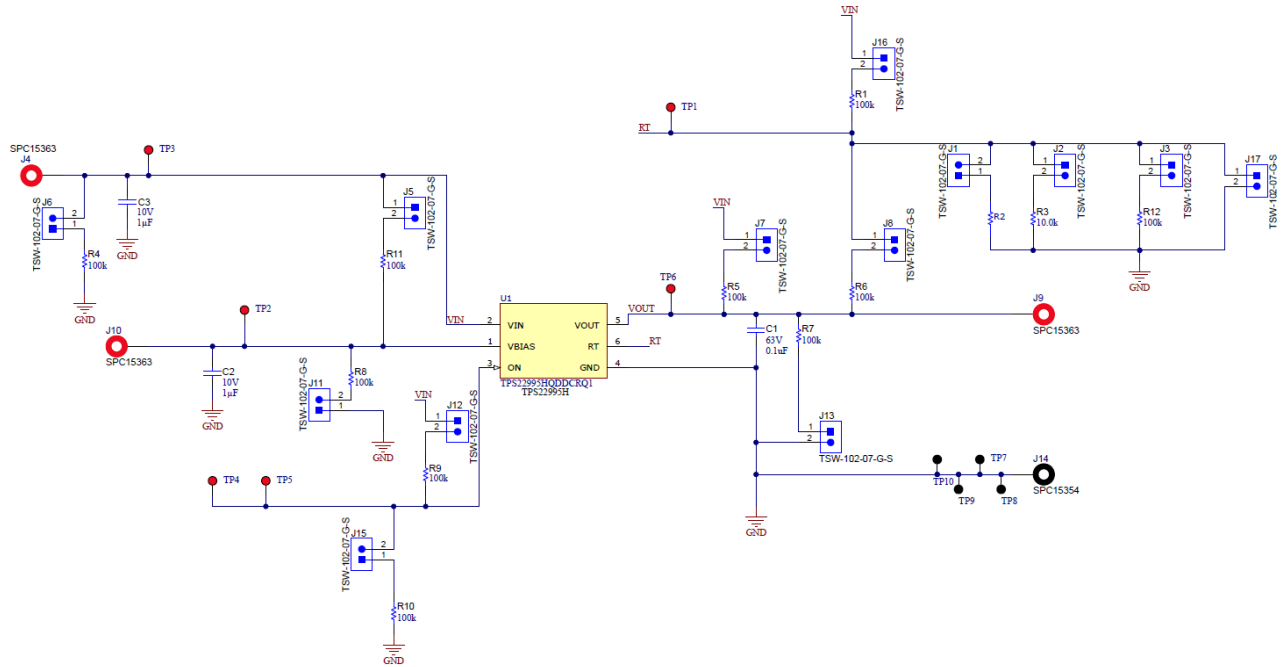


Figure 1-1. TPS22995H-Q1 Humidity Board Schematic

1.2 Layout

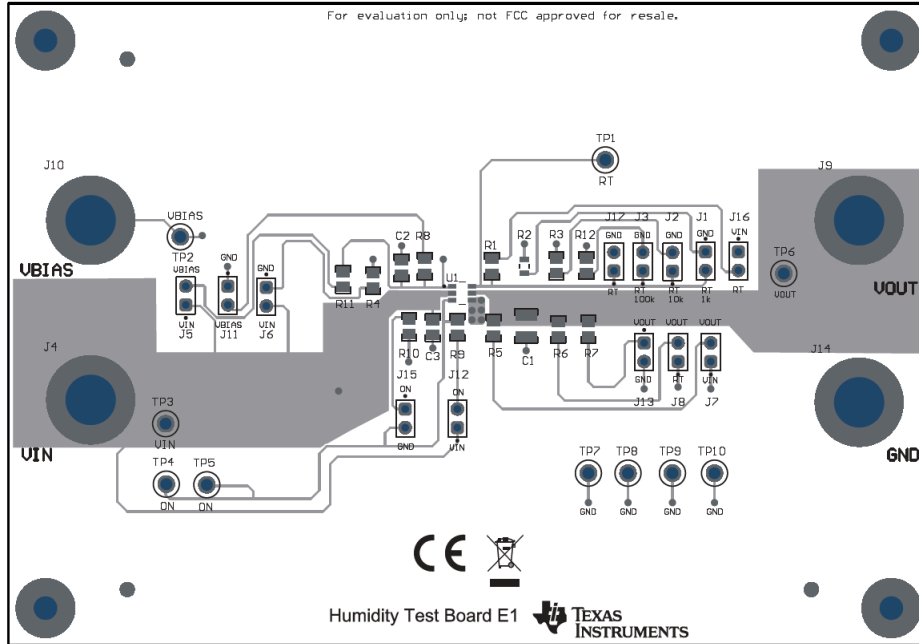


Figure 1-2. Top Layout

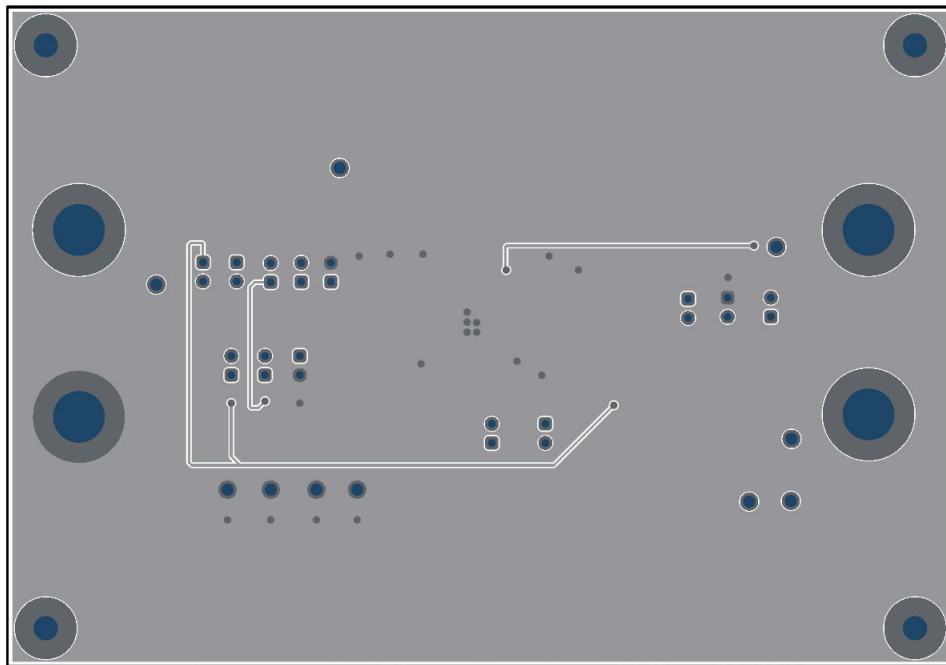


Figure 1-3. Bottom Layout

1.3 Test Conditions

Test 1 conditions: 100 k Ω Short From RT to GND

- $V_{IN} = 5\text{ V}$
- $V_{BIAS} = 5\text{ V}$
- $C_{IN} = 1\ \mu\text{F}$
- $R_T = 1\text{ k}\Omega$
- $R_{LOAD} = 100\ \Omega$
- $C_{OUT} = 0.1\ \mu\text{F}$

Test 2 Conditions: 100 k Ω Short From RT to GND

- $V_{IN} = 1.8\text{ V}$
- $V_{BIAS} = 1.8\text{ V}$
- $C_{IN} = 1\ \mu\text{F}$
- $R_T = 1\text{ k}\Omega$
- $R_{LOAD} = 100\ \Omega$
- $C_{OUT} = 0.1\ \mu\text{F}$

Test 3 Conditions: 100k Ω Short From RT to V_{IN}

- $V_{IN} = 5\text{ V}$
- $V_{BIAS} = 5\text{ V}$
- $C_{IN} = 1\ \mu\text{F}$
- $R_T = 1\text{ k}\Omega$
- $R_{LOAD} = 100\ \Omega$
- $C_{OUT} = 0.1\ \mu\text{F}$

Test 4 Conditions: 100 k Ω Short From RT to V_{IN}

- $V_{IN} = 1.8\text{ V}$
- $V_{BIAS} = 1.8\text{ V}$
- $C_{IN} = 1\ \mu\text{F}$
- $R_T = 1\text{ k}\Omega$
- $R_{LOAD} = 100\ \Omega$
- $C_{OUT} = 0.1\ \mu\text{F}$

Test 5 Conditions: 100 k Ω Short From RT to V_{OUT}

- $V_{IN} = 5\text{ V}$
- $V_{BIAS} = 5\text{ V}$
- $C_{IN} = 1\ \mu\text{F}$
- $R_T = 1\text{ k}\Omega$
- $R_{LOAD} = 100\ \Omega$
- $C_{OUT} = 0.1\ \mu\text{F}$

Test 6 Conditions: 100 k Ω Short From RT to V_{OUT}

- $V_{IN} = 1.8\text{ V}$
- $V_{BIAS} = 1.8\text{ V}$
- $C_{IN} = 1\ \mu\text{F}$
- $R_T = 1\text{ k}\Omega$
- $R_{LOAD} = 100\ \Omega$
- $C_{OUT} = 0.1\ \mu\text{F}$

2 Results

2.1 Functional Test Results

Table 2-1 shows the results of all functional tests. You can find the oscilloscope measurements in Appendix A.

Table 2-1. Functional Test Results

Pins	VBIAS	VIN	ON	GND	VOUT	RT
VBIAS	N/A	✓	N/A	✓	N/A	N/A
VIN	✓	N/A	✓	✓	✓	✓
ON	N/A	✓	N/A	✓	N/A	N/A
GND	✓	✓	✓	N/A	✓	✓
VOUT	N/A	✓	N/A	✓	N/A	✓
RT	N/A	✓	N/A	✓	✓	N/A

2.2 Base Measurements

Figure 2-1 and Figure 2-2 were created without any 100kΩ shorts between any pins to compare with the results of the 100kΩ short tests.

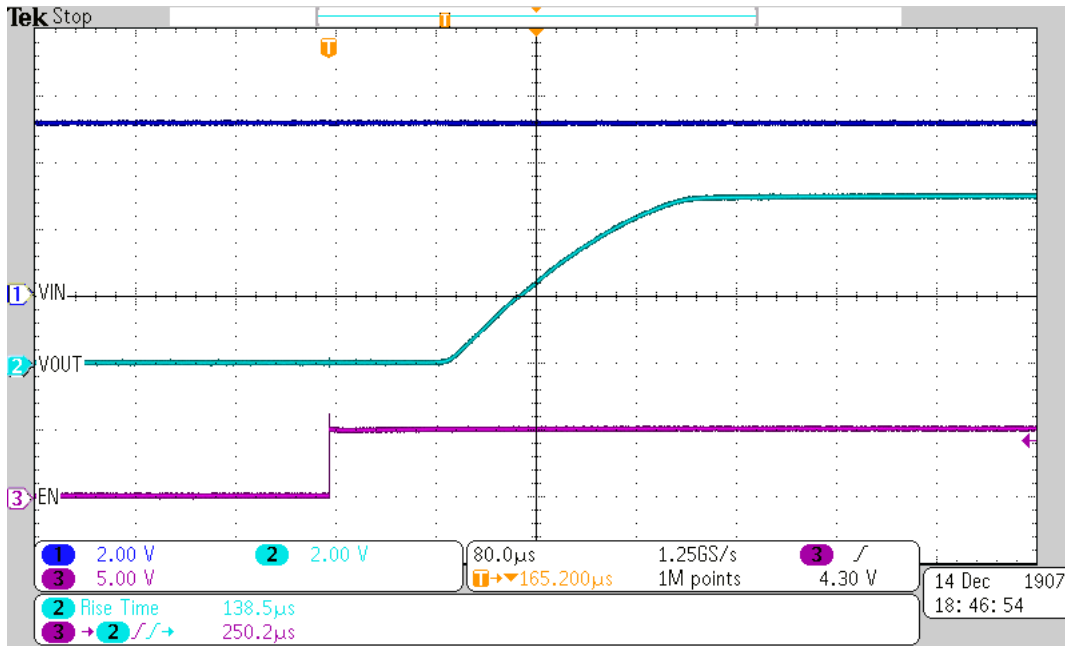


Figure 2-1. Base 5 V t_{RISE} and t_{ON} Measurement

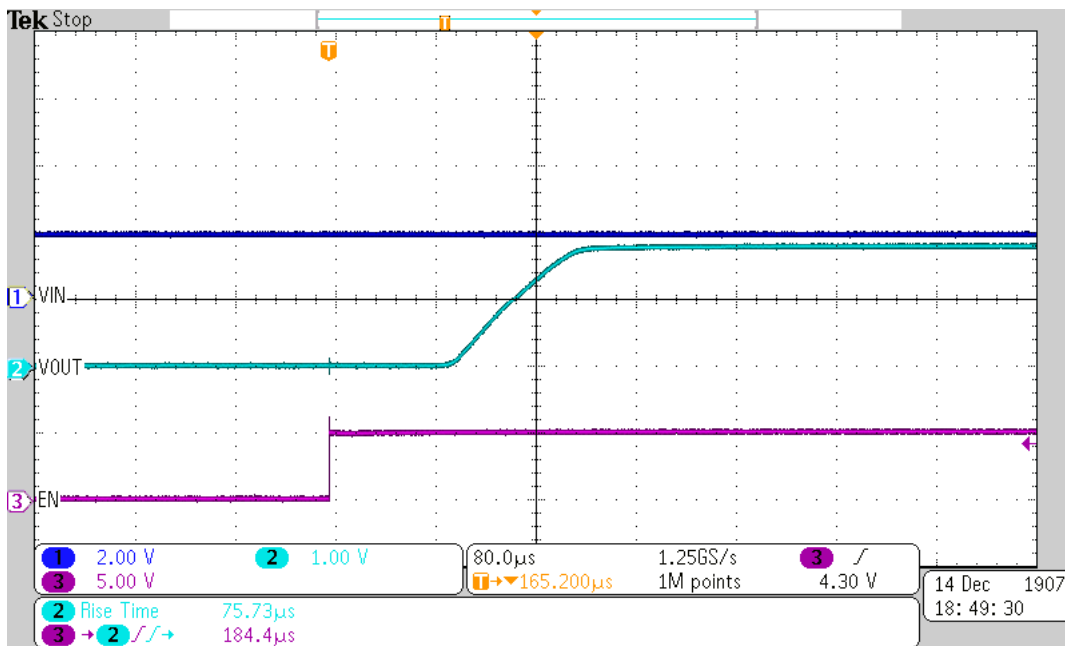


Figure 2-2. Base 1.8 V t_{RISE} and t_{ON} Measurement

2.3 Test 1: 100 kΩ Short From RT to GND 5 V

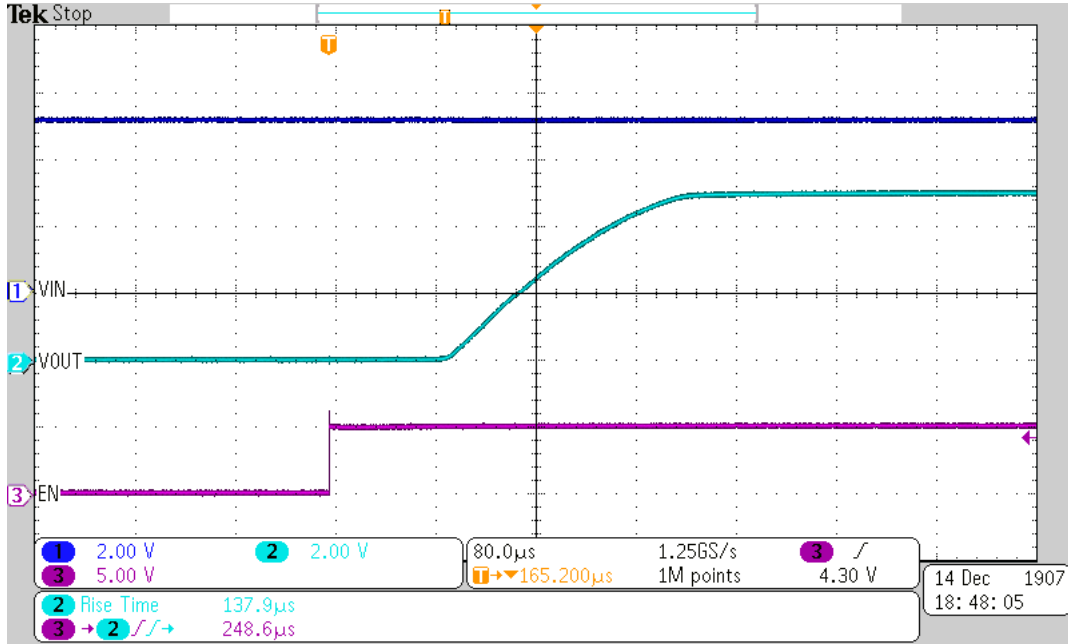


Figure 2-3. 100 kΩ Short From RT to GND 5 V t_{RISE} and t_{ON} Oscilloscope Shot

2.4 Test 2: 100 kΩ Short From RT to GND 1.8 V

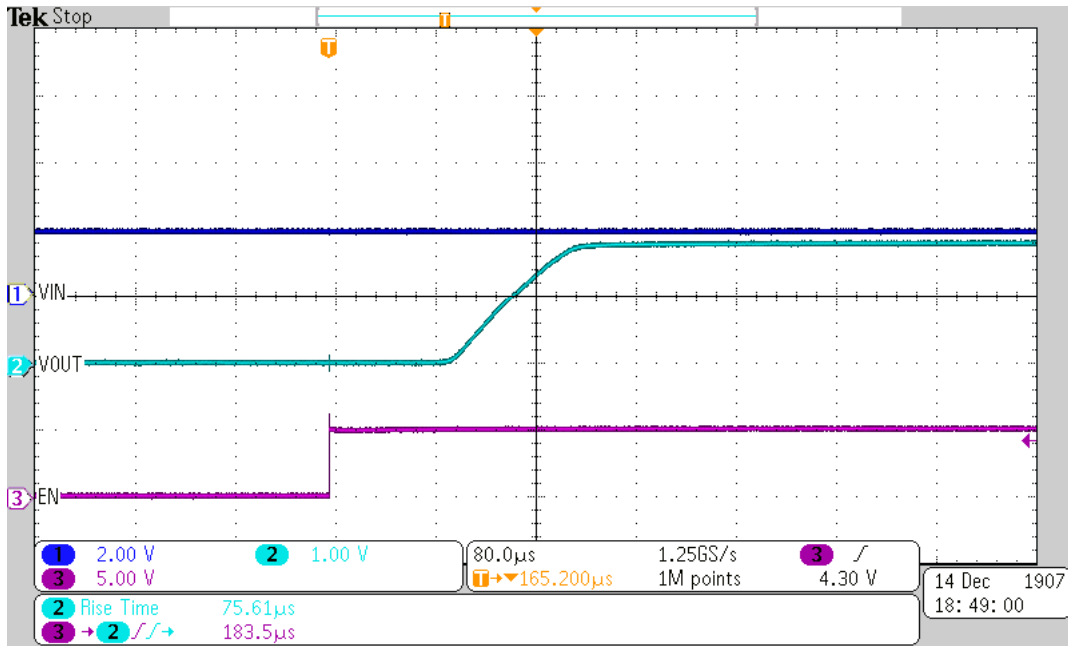


Figure 2-4. 100 kΩ Short From RT to GND 1.8 V t_{RISE} and t_{ON} Oscilloscope Shot

2.5 Test 3: 100kΩ short from RT to V_{IN} 5V

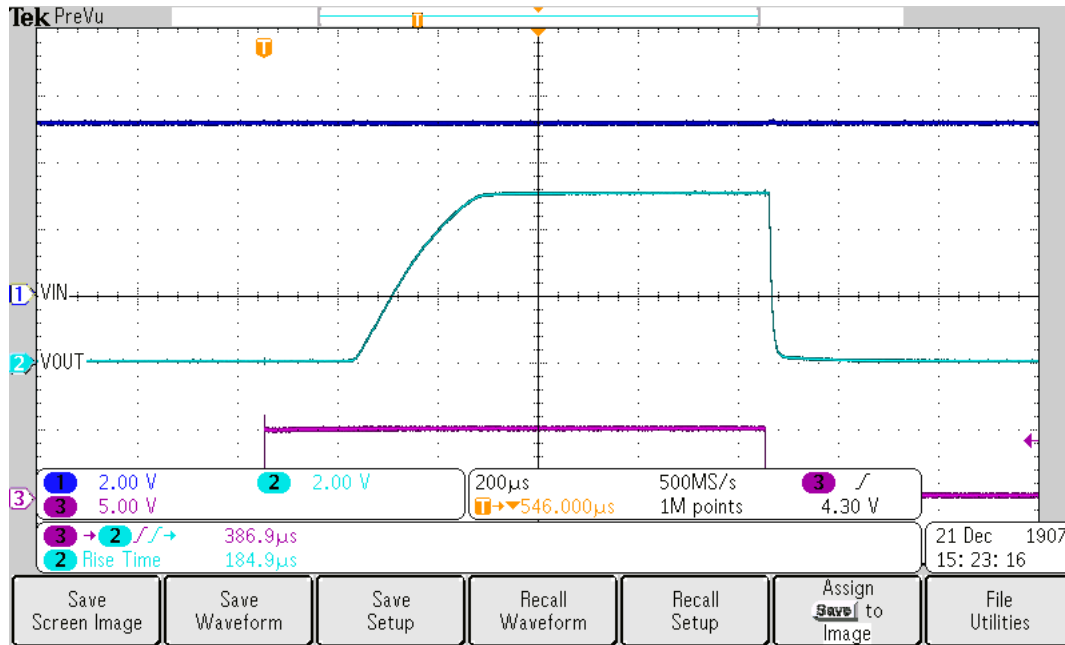


Figure 2-5. 100 kΩ Short From RT to V_{IN} 5V t_{RISE} and t_{ON} Oscilloscope Shot

2.6 Test 4: 100 kΩ Short From RT to V_{IN} 1.8 V

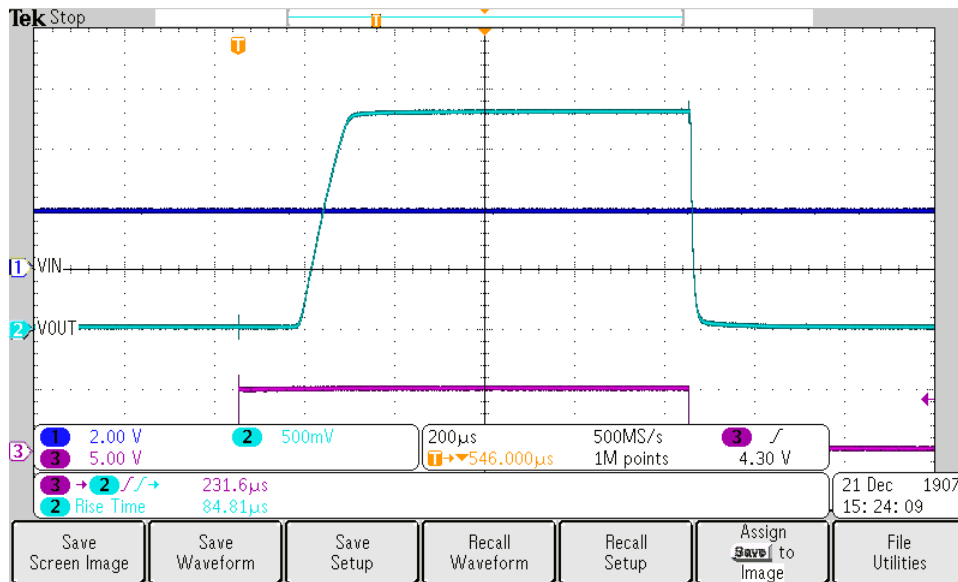


Figure 2-6. 100 kΩ Short From RT to V_{IN} 1.8 V t_{RISE} and t_{ON} Oscilloscope Shot

2.7 Test 5: 100 kΩ Short From RT to V_{OUT} 5 V

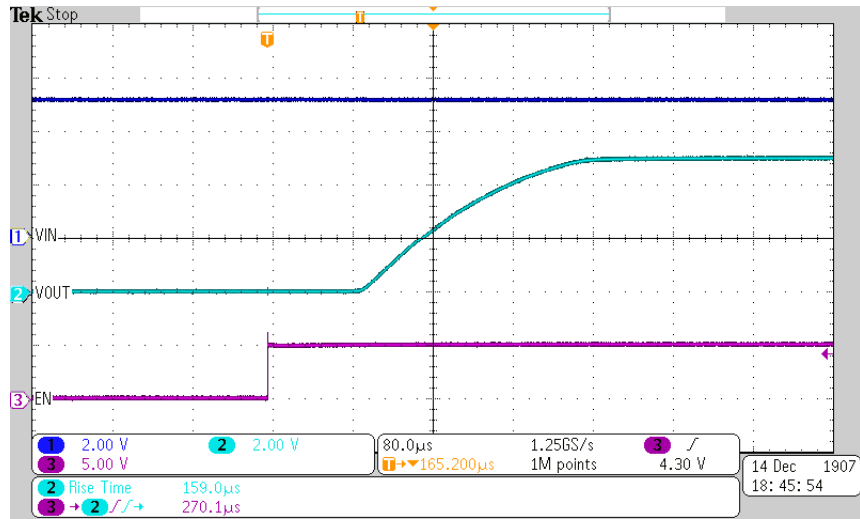


Figure 2-7. 100 kΩ Short From RT to V_{OUT} 5 V t_{RISE} and t_{ON} Oscilloscope Shot

2.8 Test 6: 100 kΩ Short From RT to V_{OUT} 1.8 V

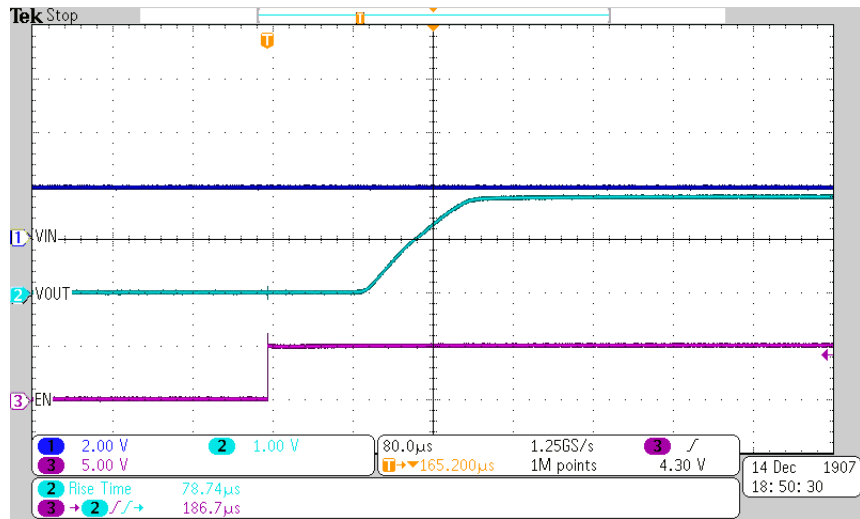


Figure 2-8. 100 kΩ Short From RT to V_{OUT} 1.8 V t_{RISE} and t_{ON} Oscilloscope Shot

3 Summary

The test results for 100-k Ω humidity shorts between RT to GND, RT TO V_{IN} , and RT to V_{OUT} show that no significant impacts occur such as device shutdown or significant timing impacts.

- Test 1 t_{RISE} and t_{ON} timing is 0.43% and 0.64% off from base measurements respectively
- Test 2 t_{RISE} and t_{ON} timing is 0.16% and 0.49% off from base measurements respectively
- Test 3 t_{RISE} and t_{ON} timing is 33.5% and 54.6% off from base measurements respectively
- Test 4 t_{RISE} and t_{ON} timing is 12% and 25.6% off from base measurements respectively
- Test 5 t_{RISE} and t_{ON} timing is 14.8% and 7.95% off from base measurements respectively
- Test 6 t_{RISE} and t_{ON} timing is 3.97% and 1.25% off from base measurements respectively

These results fall within expectations. The timing results for test 3 (short between RT and V_{IN}) are due to the RT pin voltage starting high when the device is first turned on; however, you will notice that the slew rate is still controlled and is within the range of the RT configuration. A short between the RT pin and V_{IN} pin is extremely unlikely.

4 References

- Texas Instruments, [TPS22995H-Q1 Automotive 5.5-V, 3-A, 16-mΩ Load Switch with Adjustable Rise Time](#) data sheet.
- Texas Instruments, [TPS22995H-Q1 Evaluation Module for Load Switch](#) evaluation module.

6 Appendix A

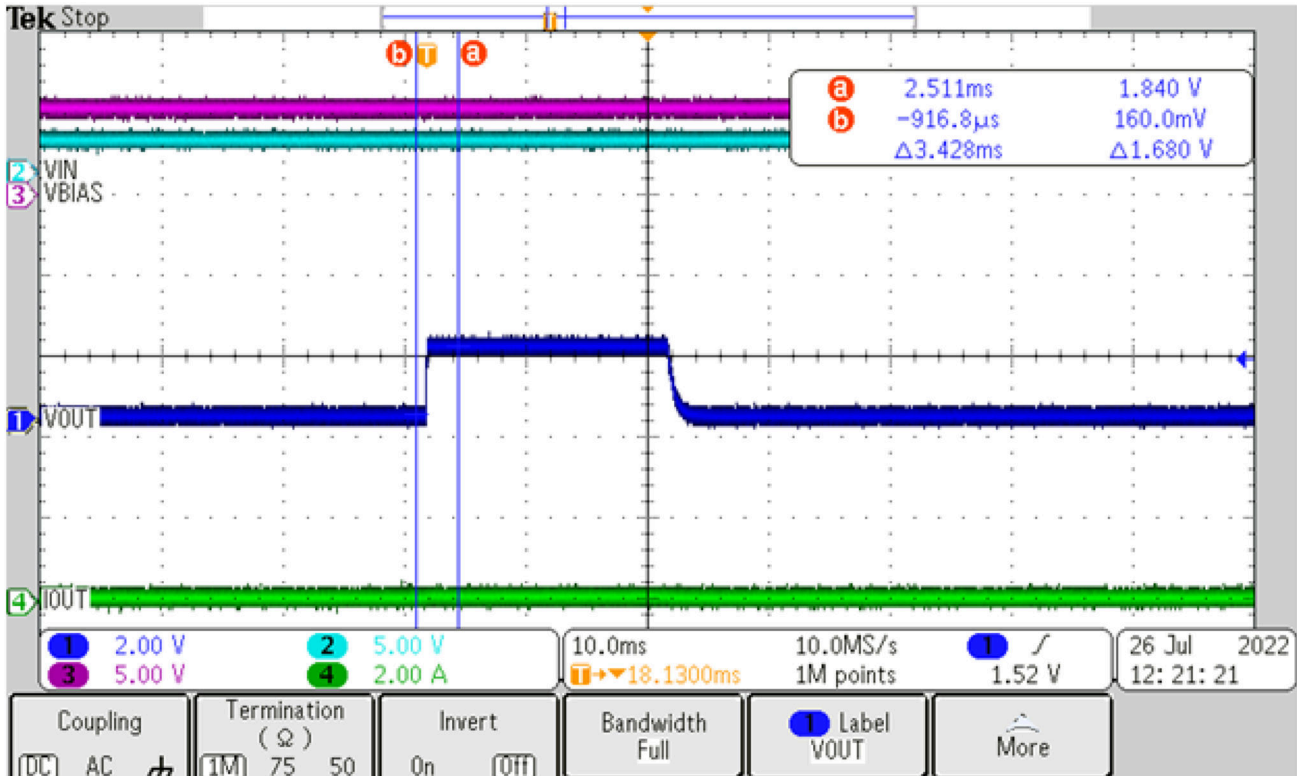


Figure 6-1. V_{IN} 100 kΩ Short to V_{BIAS}

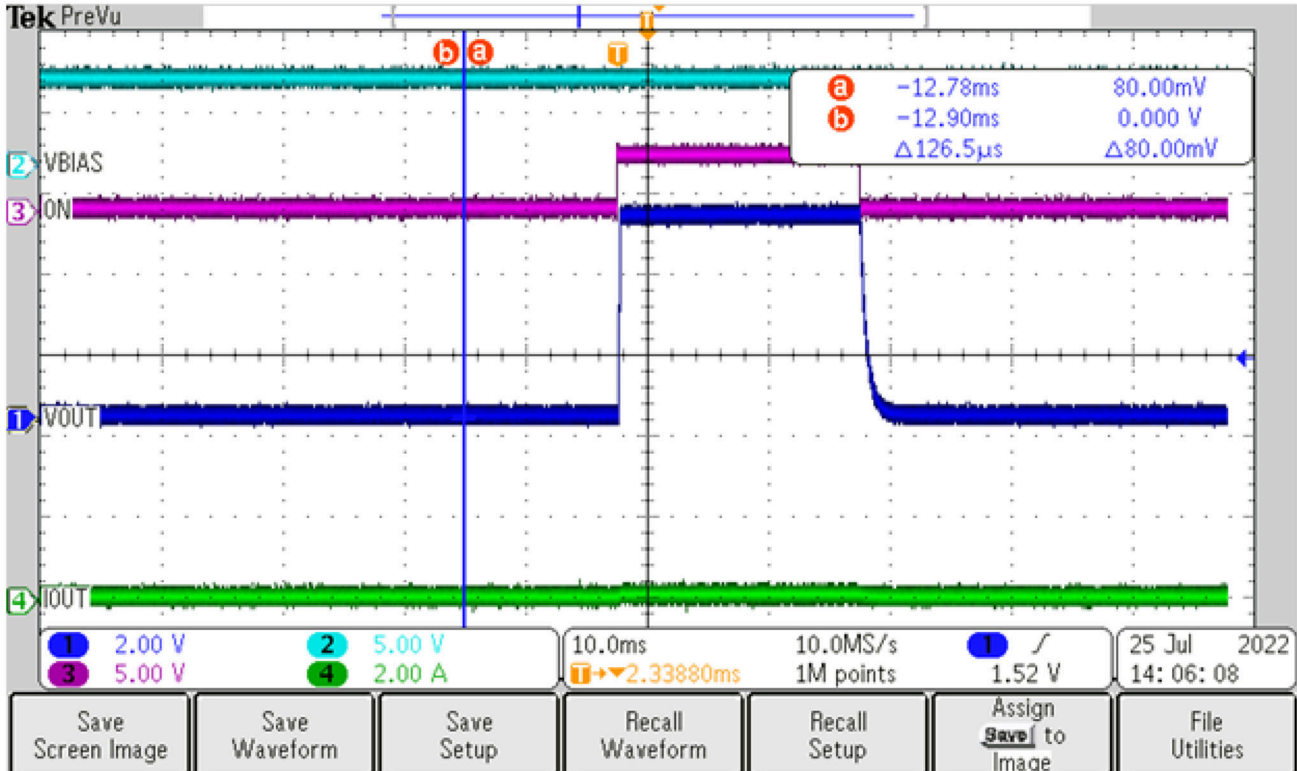


Figure 6-2. V_{BIAS} 100 kΩ to GND

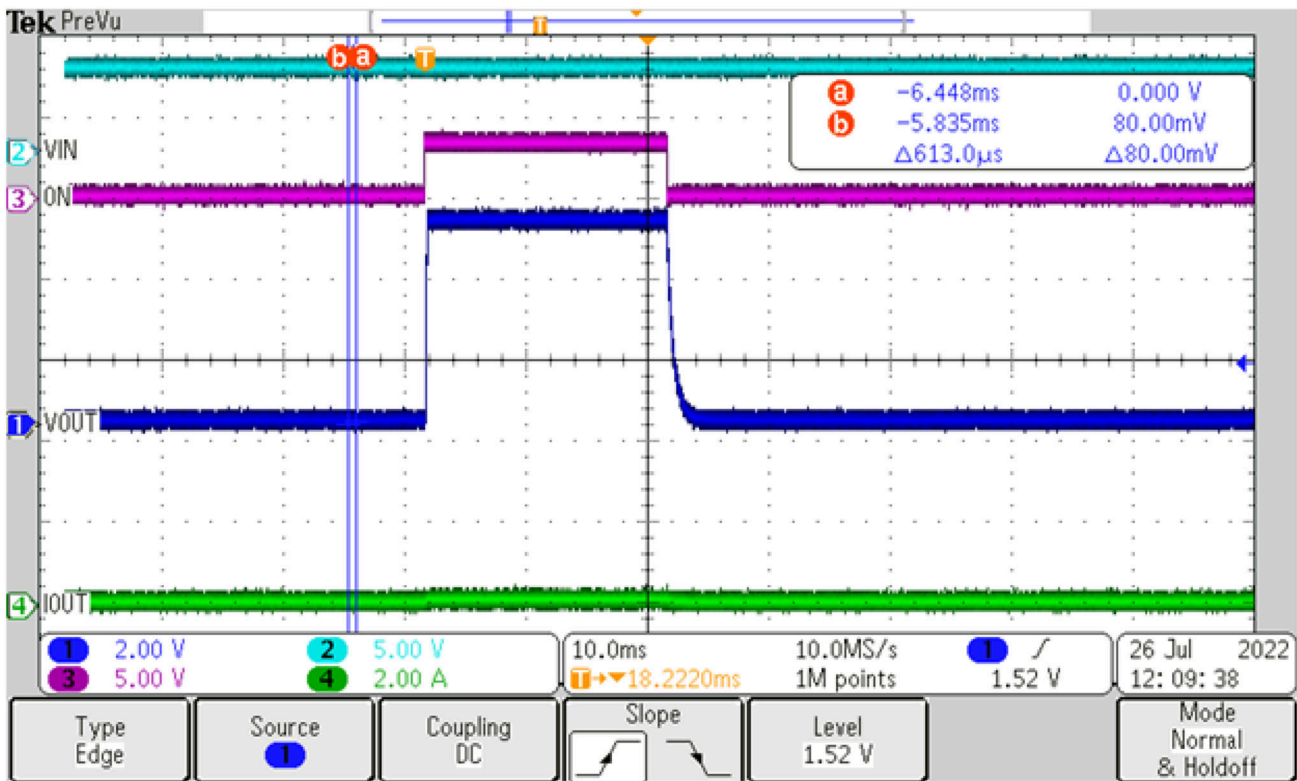


Figure 6-3. V_{IN} 100 k Ω Short to ON

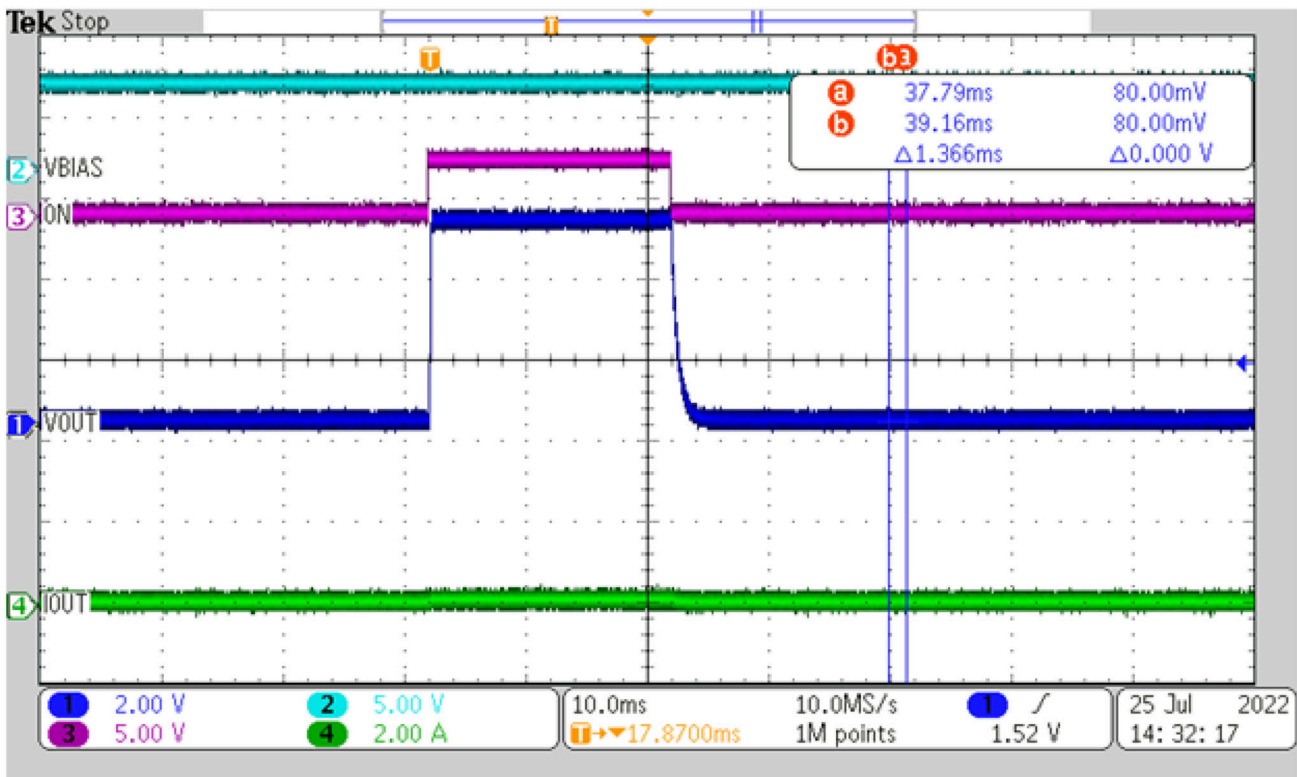


Figure 6-4. V_{IN} 100 k Ω Short to V_{OUT}

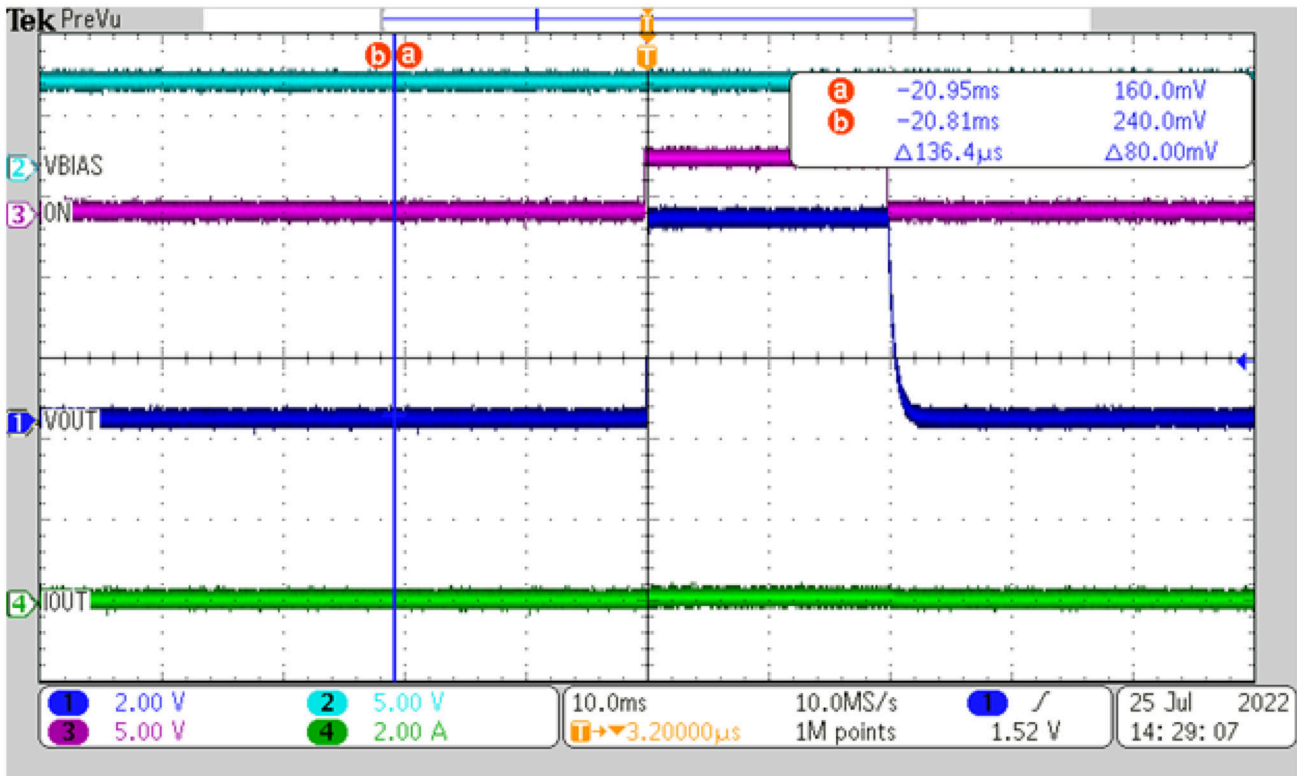


Figure 6-5. V_{OUT} 100 kΩ Short to GND

IMPORTANT NOTICE AND DISCLAIMER

TI PROVIDES TECHNICAL AND RELIABILITY DATA (INCLUDING DATA SHEETS), DESIGN RESOURCES (INCLUDING REFERENCE DESIGNS), APPLICATION OR OTHER DESIGN ADVICE, WEB TOOLS, SAFETY INFORMATION, AND OTHER RESOURCES "AS IS" AND WITH ALL FAULTS, AND DISCLAIMS ALL WARRANTIES, EXPRESS AND IMPLIED, INCLUDING WITHOUT LIMITATION ANY IMPLIED WARRANTIES OF MERCHANTABILITY, FITNESS FOR A PARTICULAR PURPOSE OR NON-INFRINGEMENT OF THIRD PARTY INTELLECTUAL PROPERTY RIGHTS.

These resources are intended for skilled developers designing with TI products. You are solely responsible for (1) selecting the appropriate TI products for your application, (2) designing, validating and testing your application, and (3) ensuring your application meets applicable standards, and any other safety, security, regulatory or other requirements.

These resources are subject to change without notice. TI grants you permission to use these resources only for development of an application that uses the TI products described in the resource. Other reproduction and display of these resources is prohibited. No license is granted to any other TI intellectual property right or to any third party intellectual property right. TI disclaims responsibility for, and you will fully indemnify TI and its representatives against, any claims, damages, costs, losses, and liabilities arising out of your use of these resources.

TI's products are provided subject to [TI's Terms of Sale](#) or other applicable terms available either on [ti.com](https://www.ti.com) or provided in conjunction with such TI products. TI's provision of these resources does not expand or otherwise alter TI's applicable warranties or warranty disclaimers for TI products.

TI objects to and rejects any additional or different terms you may have proposed.

Mailing Address: Texas Instruments, Post Office Box 655303, Dallas, Texas 75265
Copyright © 2023, Texas Instruments Incorporated